

IN THE MATTER of the Gambling Act 2003
AND on applications by
CHRISTCHURCH CASINOS LIMITED for approval of new temporary and permanent floor plans, and a new game mix

BEFORE THE GAMBLING COMMISSION

Members: P Chin (Chief Gambling Commissioner)
M M Lythe
P J Stanley
G L Reeves
M J Richardson

Date of Applications: 7 August 2008, 3 September 2008

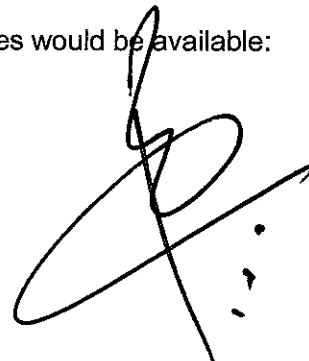
Date of Decision: 19 September 2008

Date of Notification of Decision: 23 September 2008

DECISION ON APPLICATIONS BY CHRISTCHURCH CASINOS LIMITED FOR APPROVAL OF NEW TEMPORARY AND PERMANENT FLOOR PLANS, AND A NEW GAME MIX

Application

1. Christchurch Casinos Limited ("**CCL**") applied to the Gambling Commission (the "**Commission**"), under condition 1 of its venue licence, for approval of:
 - (a) new temporary floor plans for the Christchurch casino "September 2008 (Interim)";
 - (b) new permanent floor plans for the Christchurch casino "September 2008"; and
 - (c) a new game mix, "G".
2. If the new game mix is approved, the following game mixes would be available:



Game mix	A	B	C	D	E	F	G
Roulette	9	8	8	9	8	8	8
Black Jack (7-box)	14	8	11	11	12	9	10
Black Jack (5-box)	0	0	0	0	0	0	2
Caribbean Stud Poker	3	3	3	3	3	2	2
Midi Baccarat	3	4	4	4	4	4	5
Mini Baccarat	1	1	1	1	1	1	1
Money Wheel	1	1	1	1	1	1	1
Poker	2	7	4	3	3	7	3
Tai Sai	1	1	1	1	1	1	1
Electronic Roulette		1	1	1	1	1	1
Total	34	34	34	34	34	34	34

Licence condition

3. Condition 1 of CCL's venue licence (as amended by the Commission by decision GC06/04) provides as follows:

Casino premises to be designed, developed, constructed, fitted out and commissioned for operation in accordance with application

The casino premises shall be designed, developed, constructed, fitted out and commissioned for operation generally in accordance with the application of the licence holder or with such changes as may from time to time be approved by the Commission, provided however that nothing in this condition shall apply in respect of any matter specified in the second schedule to the Casino Control Act 1990 (the "Act").

Submissions by CCL

4. CCL stated that:
- (a) it seeks approval of new temporary and permanent floor plans for the Christchurch casino;
 - (b) it wants to amend its temporary floor plans by deploying eight gaming tables in the VIP Room, following customer feedback to do so; and
 - (c) during the refurbishment of the casino, an air duct was located in an area on level 4 where it planned to place gaming machines. It wants to realign a glass wall to allow for this, and introduce a new glass frontage and doors in the gaming machine area on level 4 to create a more exclusive zone for its VIP gaming machine players. It wants to apply these changes to its temporary and permanent floor plans.

5. CCL submitted, in summary, that:

- (a) the introduction of the new glass frontage and doors would create a separate and more exclusive area for its VIP gaming machine players, but it would discharge its host responsibility obligations by actively monitoring the area (the VIP area would merit a higher level of host responsibility); and
- (b) should the Commission approve these floor plans, the temporary floor plans approved in decision GC13/08 and the operational floor plans approved in decision GC06/08 are no longer required.

6. CCL stated that it wants to introduce a new game mix, G, following an increase in demand for Midi Baccarat tables. CCL submitted that:

- (a) game mix G would not increase opportunities for casino gaming as it has fewer player spaces and a slower rate of play than game mix A, the regulatory benchmark for the Christchurch casino, as follows:

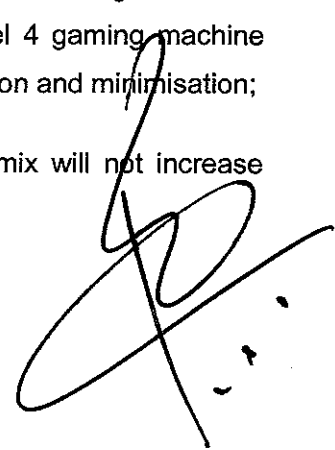
	Game mix A	Game mix G
Player numbers	662	658
Rounds per hour	1608	1567

- (b) game mix G includes two 5-box Black Jack tables. These games would be played with table inserts with only five player positions available (as opposed to using a 7-box table insert with two player positions closed); and
- (c) it will provide the DIA inspectorate with 24 hours notice of any change in game mix.

Submissions by the Secretary

7. The Secretary submitted, in summary, as follows:

- (a) He had no concerns with the deployment of eight gaming tables in the VIP Room;
- (b) He had no objection to the realignment of an existing glass frontage, and the introduction of a new glass frontage and doors in the level 4 gaming machine area, noting CCL's undertaking with respect to harm prevention and minimisation;
- (c) He concurred with CCL's submission that the new game mix will not increase opportunities for casino gambling, but noted the following:

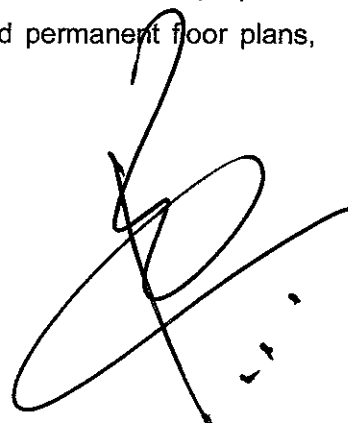


- (i) CCL's analysis of the rate of play for game mix G did not take into account that 5-box Black Jack is likely to be faster than 7-box Black Jack. In reply, CCL accepted this, but stated that difference would not affect this application;
 - (ii) CCL's calculations on opportunities for casino gambling would be more accurate if the number of opportunities per person was considered, as opposed to the number of opportunities per table.
- (d) The use of 5-box Black Jack table inserts is appropriate and would not lead to regulatory issues for his inspectors, or confusion amongst gamblers; and
- (e) CCL stated that it will provide the DIA with 24 hours notice of any change in game mix. The usual requirement is for CCL to provide five working days prior notice of any change.

Analysis

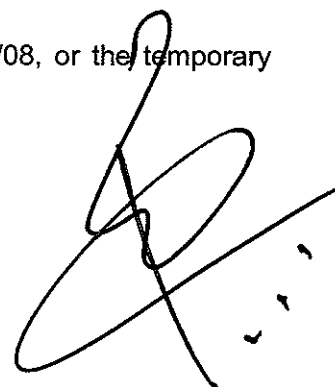
Floor plans

8. In decision GC06/08, the Commission approved new permanent floor plans for levels 3 and 4 of the casino, and a temporary floor plan for level 3. This temporary floor plan ceased to be valid following decision GC13/08 when it was replaced by new temporary floor plans for levels 3 and 4. CCL now seeks to replace all of these plans with new temporary and permanent plans, with a new annexure entitling CCL to operate seven game mixes, A-G.
9. The current temporary floor plan for level 4 depicts six gaming tables in the VIP Room, with a further two tables in a room immediately behind the VIP Room. CCL now wants all eight gaming tables in the VIP Room. The Commission considered that the relocation of these two tables raised no issues of regulatory concern.
10. CCL proposed to realign a glass wall and introduce a new glass partition and doors on the level 4 gaming area. The Commission noted that this would create a separate gaming machine area, which CCL undertook to monitor to ensure that it meets its host responsibility obligations. On this basis, the Commission was satisfied that the proposed construction changes, which will apply to CCL's temporary and permanent floor plans, raised no issues of regulatory concern.

A large, stylized handwritten signature in black ink, located in the bottom right corner of the page. The signature is cursive and appears to be the name of an official.

Game mix

11. CCL presently has six approved game mixes, A-F, and seeks approval to introduce a new game mix, G. Game mix G provides for two 5-box Black Jack tables, which have never before been deployed at the Christchurch casino.
12. The Commission has previously rejected proposals to regulate player spaces by limiting numbers at tables through the closure of player spaces. The Commission criticised those proposals as being vague, uncertain and involving a degree of regulation not contemplated in section 12 of the Act.
13. CCL has made it clear that if game mix G is approved, it will not use an existing 7-box Black Jack table and close two player spaces, rather it will install new 5-box inserts. The Commission considered CCL's proposal to be clear, and would not lead to confusion of the type that it had previously criticised. The Commission noted that the Secretary had no objection to 5-box Black Jack being introduced in this manner.
14. In order to assess whether game mix G would give rise to an increase in opportunities for casino gambling, the Commission compared game mix G with game mix A, which is the game mix which provides the greatest level of opportunities for casino gambling at the Christchurch casino. Game mix G has fewer players and a slower rate of play than game mix A.
15. The Commission noted the Secretary's submission that 5-box Black Jack is likely to generate more rounds per hour than 7-box Black Jack, but did not consider that this would increase the opportunities available on game mix G beyond those provided on game mix A. The Commission was satisfied that game mix G would not increase opportunities for casino gambling.
16. The Commission is not persuaded that it should reduce the period of notice required to be given to DIA upon a change generally, or to or from game mix G, from that required under the current game mix annexure. CCL provided no compelling reason for shortening the period of notice which the Commission regards as an important consideration for ease of monitoring compliance. The Commission has not reduced the notice requirements in the annexure.
17. As CCL no longer requires the plans approved in decision GC06/08, or the temporary plans approved in decision in GC13/08, they can be removed.

A large, stylized handwritten signature in black ink, consisting of several overlapping loops and a long horizontal stroke extending to the right.

Decision of Commission

18. The Commission decided:

- (a) to approve the new temporary floor plans "September 2008 Interim" (**attached**), under condition 1 of CCL's venue licence;
- (b) to approve the new permanent floor plans "September 2008" (**attached**), under condition 1 of CCL's venue licence;
- (c) to approve game mix G, under condition 1 of CCL's venue licence;
- (d) that the temporary floor plans approved in decision GC13/08 and the permanent floor plans approved in decision GC06/08 cease to be valid from the date of this decision.

19. Temporary plans "September 2008 Interim" will cease to be valid once CCL is fully reliant upon the "September 2008".



Peter Chin
Chief Gambling Commissioner

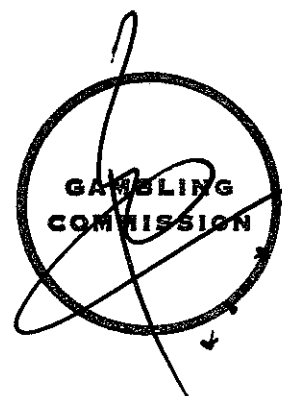
for and on behalf of the
Gambling Commission

23 September 2008

ANNEXURE

Pursuant to condition 1 of CCL's venue licence, the following table game mixes may be operated by the Licence Holder on casino gaming tables, subject to the following conditions and requirements:

- (a) Roulette – 9 games
Black Jack (7-box) – 14 games
Caribbean Stud Poker – 3 games
Midi Baccarat – 3 games
Mini Baccarat – 1 game
Money Wheel – 1 game
Poker – 2 games
Tai Sai – 1 game
- (b) Roulette – 8 games
Black Jack (7-box) – 8 games
Caribbean Stud Poker – 3 games
Midi Baccarat – 4 games
Mini Baccarat – 1 game
Money Wheel – 1 game
Poker – 7 games
Tai Sai – 1 game
Electronic Roulette – 1 game
- (c) Roulette – 8 games
Black Jack (7-box) – 11 games
Caribbean Stud Poker – 3 games
Midi Baccarat – 4 games
Mini Baccarat – 1 game
Money Wheel – 1 game
Poker – 4 games
Tai Sai – 1 game
Electronic Roulette – 1 game
- (d) Roulette – 9 games
Black Jack (7-box) – 11 games
Caribbean Stud Poker – 3 games
Midi Baccarat – 4 games
Mini Baccarat – 1 game
Money Wheel – 1 game
Poker – 3 games
Tai Sai – 1 game
Electronic Roulette – 1 game
- (e) Roulette – 8 games
Black Jack (7-box) – 12 games
Caribbean Stud Poker – 3 games
Midi Baccarat – 4 games
Mini Baccarat – 1 game
Money Wheel – 1 game
Poker – 3 games
Tai Sai – 1 game
Electronic Roulette – 1 game



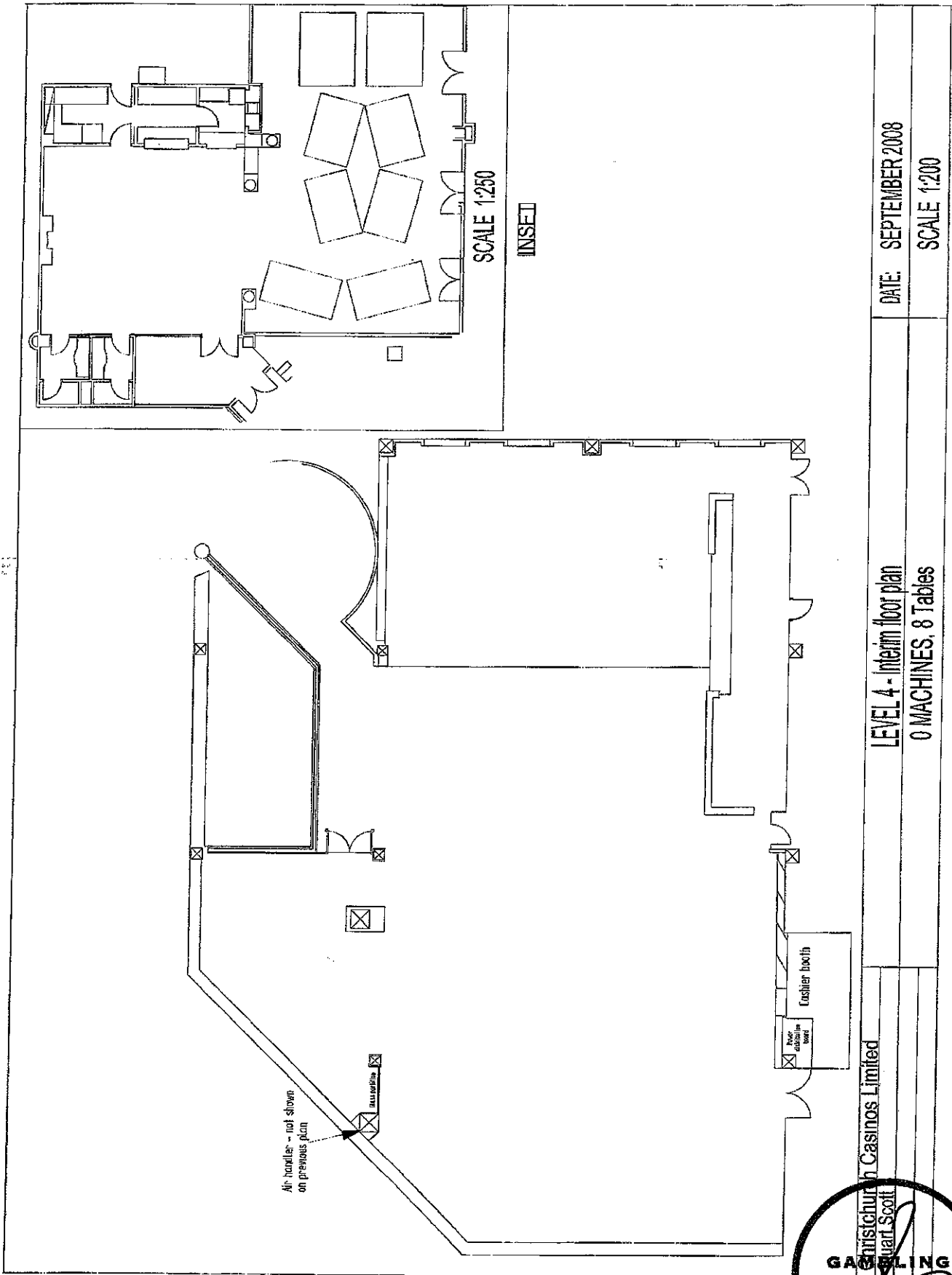
- (f) Roulette – 8 games
Black Jack (7-box) – 9 games
Caribbean Stud Poker – 2 games
Midi Baccarat – 4 games
Mini Baccarat – 1 game
Money Wheel – 1 game
Poker – 7 games
Tai Sai (single) – 1 game
Electronic Roulette – 1 game
- (g) Roulette – 8 games
Black Jack (7-box) – 10 games
Black Jack (5-box) – 2 games
Caribbean Stud Poker – 2 games
Midi Baccarat – 5 games
Mini Baccarat – 1 game
Money Wheel – 1 game
Poker – 3 games
Tai Sai – 1 game
Electronic Roulette – 1 game

Notes

- (a) The Licence Holder is permitted to change between the above approved table game mixes, subject to providing the inspectorate with weekly advice of the table game mix to be used for the forthcoming week, and five working days notice of any change from one approved game mix to another, except when alternating between table game mixes C and E, in which case the Licence Holder must telephone the local inspectorate prior to flipping.
- (b) The table game mixes refer (unless specified otherwise) to manual versions and do not extend to or permit the introduction of any electronic versions or new electronic aids or enhancements. If electronic versions, aids or enhancements are sought to be introduced, an application is required by the Licence Holder for approval of a revised floor layout and game mix.



September 2008 – Interim



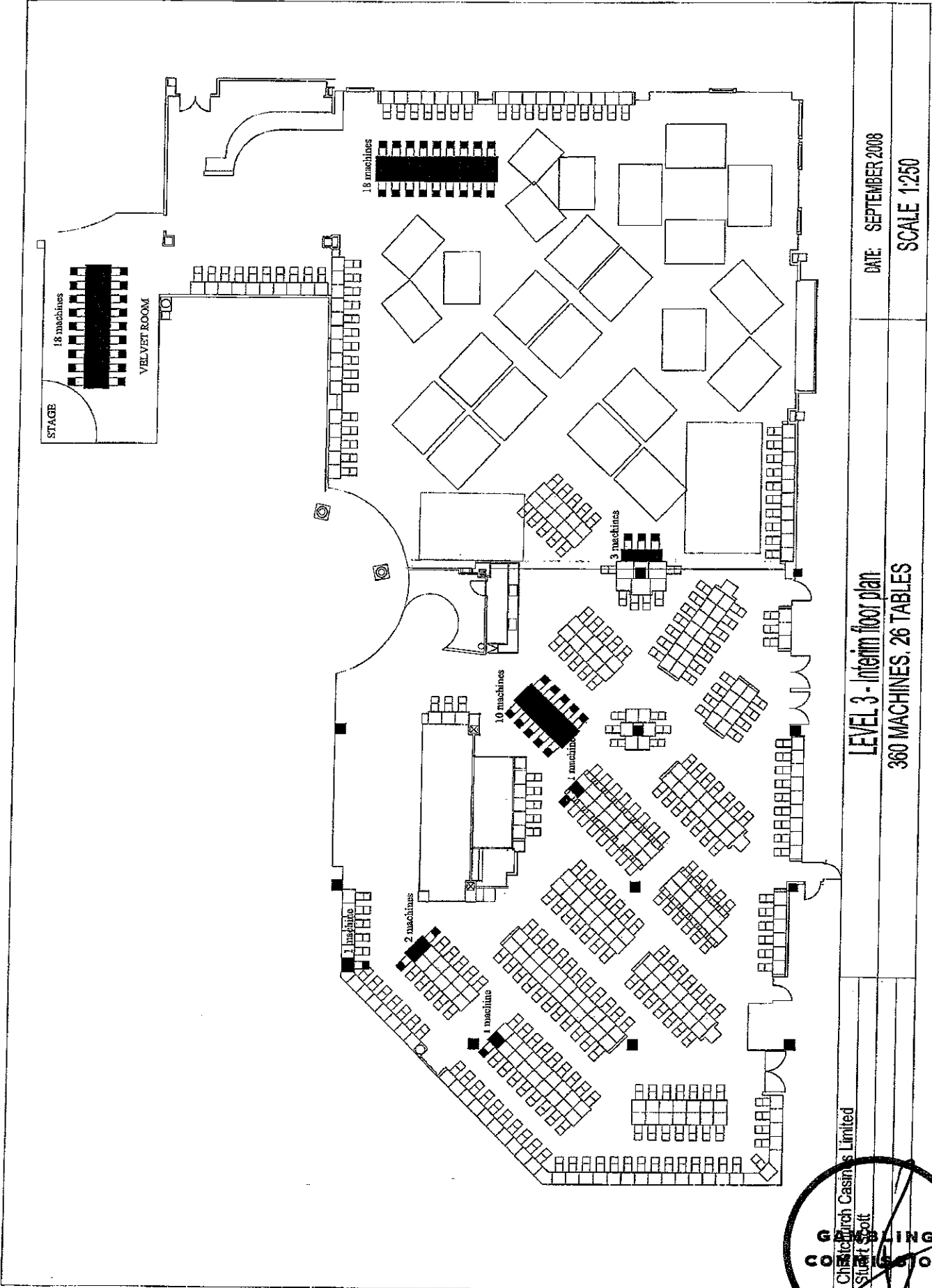
Gambian Casinos Limited
Guan Scott

GAMBLING
COMMISSION

DATE: SEPTEMBER 2008

SCALE 1:200

September 2008 - Interim

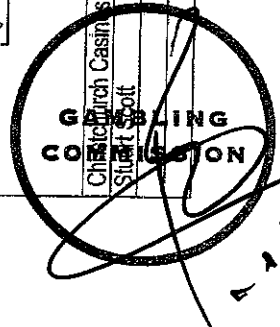


DATE: SEPTEMBER 2008

SCALE 1:250

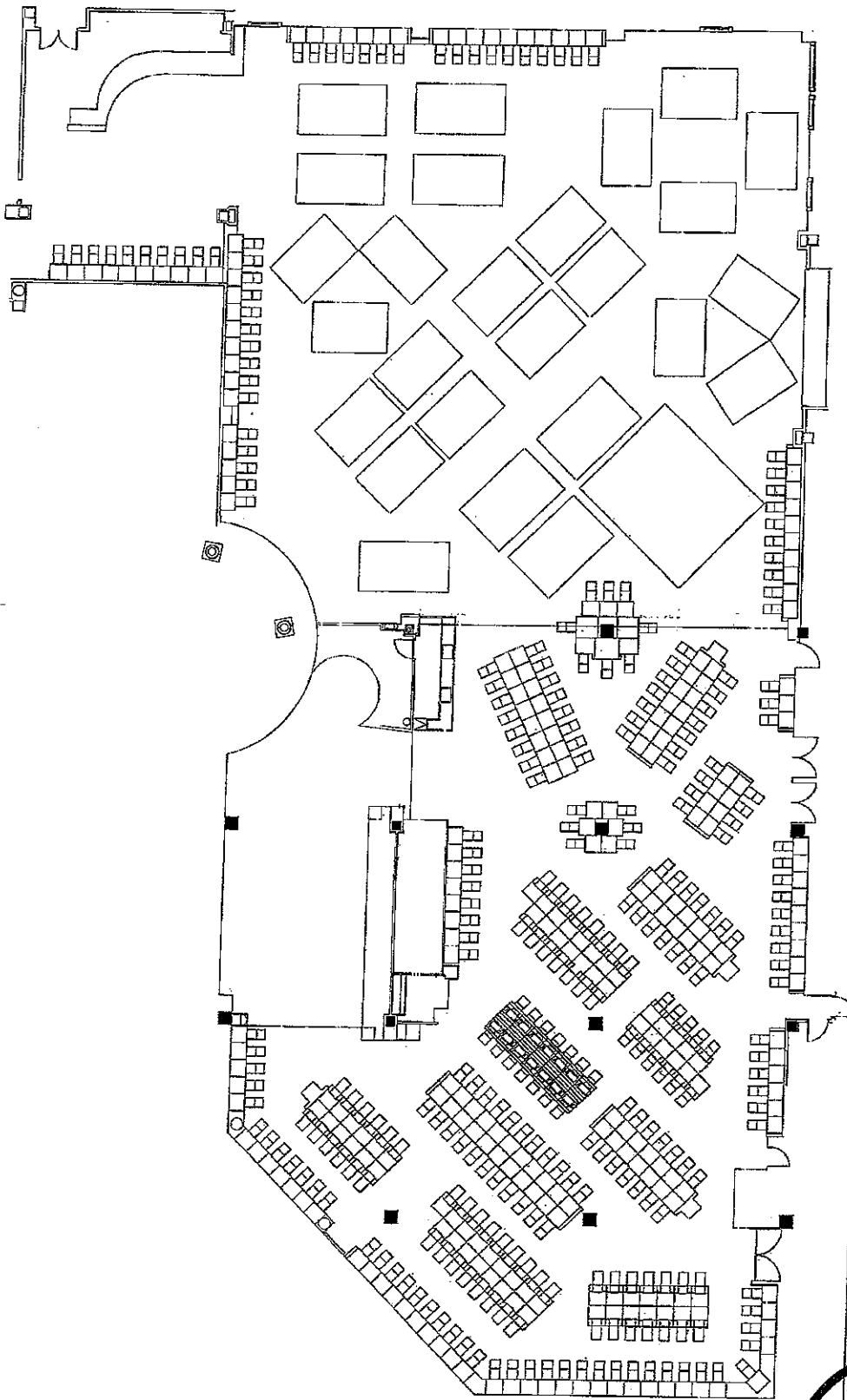
LEVEL 3 - Interim floor plan

360 MACHINES, 26 TABLES



Chiswick Casino Limited

September 2008

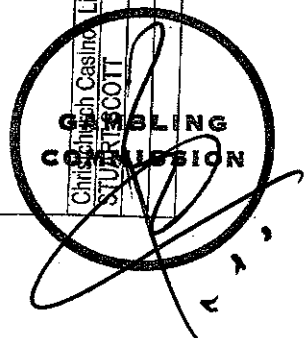


DATE: SEPTEMBER 2008

SCALE 1:250

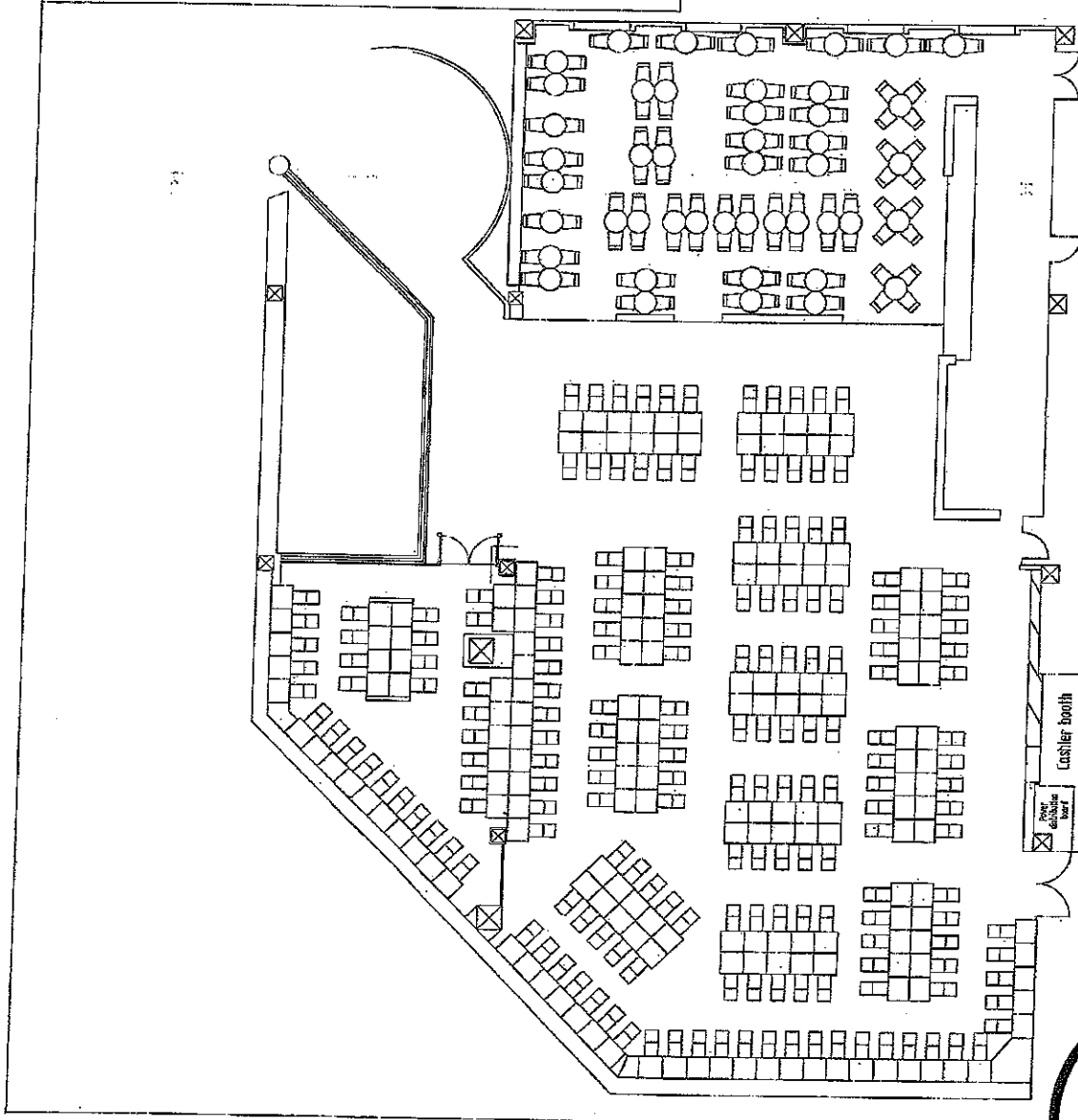
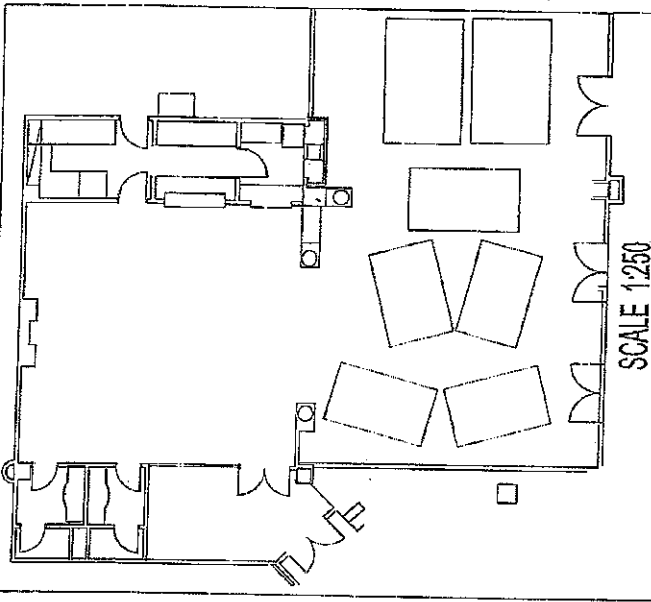
LEVEL 3

308 MACHINES, 27 TABLES



CHRISTIE'S CASINO LIMITED
STUART SCOTT

September 2008



DATE: SEPTEMBER 2008

LEVEL 4

192 MACHINES, 7 Tables

Gambling Casinos Limited
PART 501

GAMBLING
COMMISSION

