

**DECISION UNDER DELEGATED AUTHORITY ON AN APPLICATION
BY SKYCITY AUCKLAND LIMITED FOR APPROVAL OF
NEW SIGNAGE AT THE AUCKLAND CASINO**

Date of Decision: 5 December 2018

1. On 4 December 2018, SKYCITY Auckland Limited (“**SCAL**”) applied, pursuant to condition 6 of its venue licence, for approval of an LED display at the top of the Sky Tower at the Auckland casino on New Year’s Eve.

2. Condition 6 provides as follows:

6. The Licence Holder must obtain the approval of the Commission prior to:

(a) ...

(b) ...

(c) the addition or alteration of signage relating to the casino business on any building, road or structure within the Original Casino Site or the NZICCA Additional Site, including, walkways between any of the Original Casino Site and the NZICCA Additional Site;

(d) ...

The process by which the Licence Holder may obtain approval for construction or design changes to Levels 1, 2, 3, 5 and 6 of the Original Casino Site, and Level 7 of the Grand Hotel on the NZICCA Additional Site, including the Gambling Area (paragraphs (a) and (b) above) is set out in condition 7. The Commission will determine any application for approval under 6(c). The Executive Director may approve the addition or alteration of signage relating to the casino business on any building, road or structure within the Original Casino Site or the NZICCA Additional Site (paragraph (d) above) and the broadcasting of gambling activity by or on behalf of the Licence Holder via any communication medium or channel (paragraph (e) above) if satisfied that the proposed initiative(s) will have no potentially adverse effects. The proposed changes must otherwise be referred to the Commission for a decision on approval.

3. The proposal will have no potentially adverse effects and is approved by the Executive Director under delegated authority pursuant to condition 6 SCAL’s venue licence. A copy of the signage is **attached**.



Blair Cairncross
Executive Director
Gambling Commission

5 December 2018

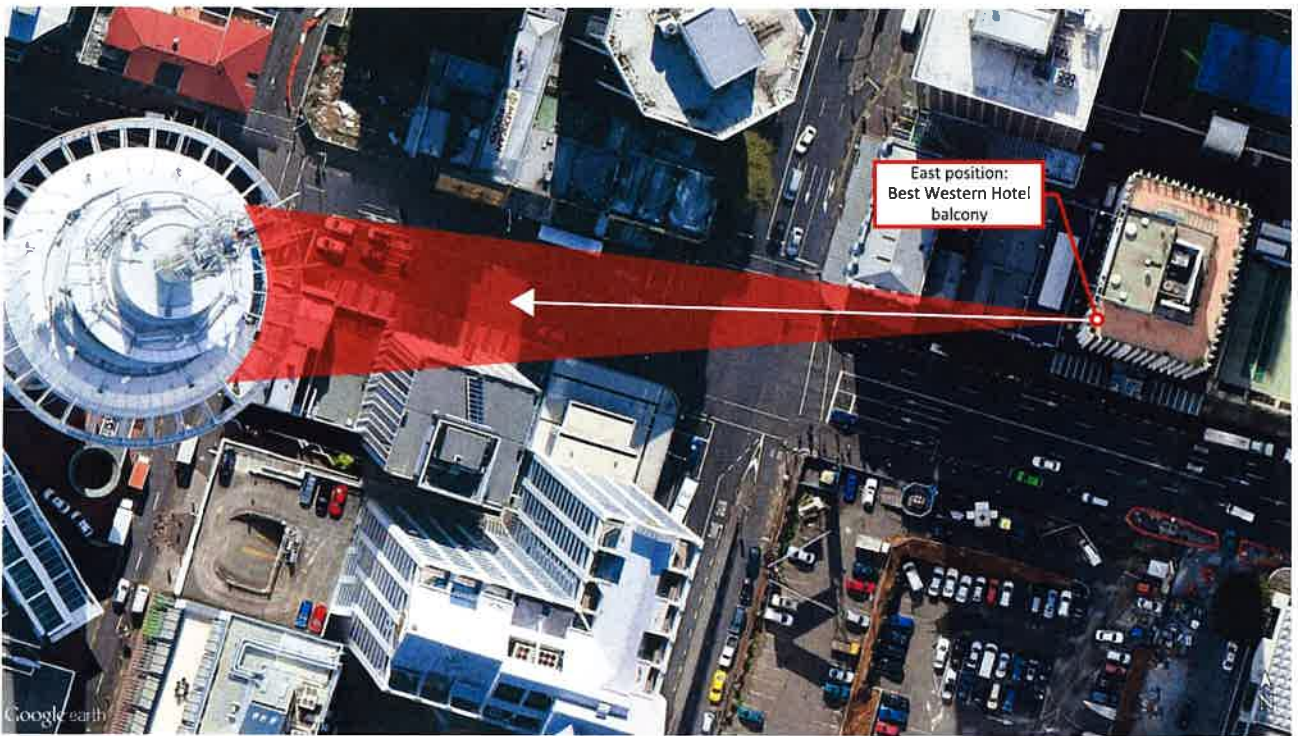


SOULSTORM LASERS – SKY TOWER LASER SHOW APPROVAL (DRAFT)
NEW YEARS EVE 2018
(V2, 3 December 2018)



1.0 PROJECTION POINT LOCATIONS

1.1 East Position (balcony of the Best Western Hotel)



1.2 North-West Position (balcony of TVNZ)



3.0 CONTENT

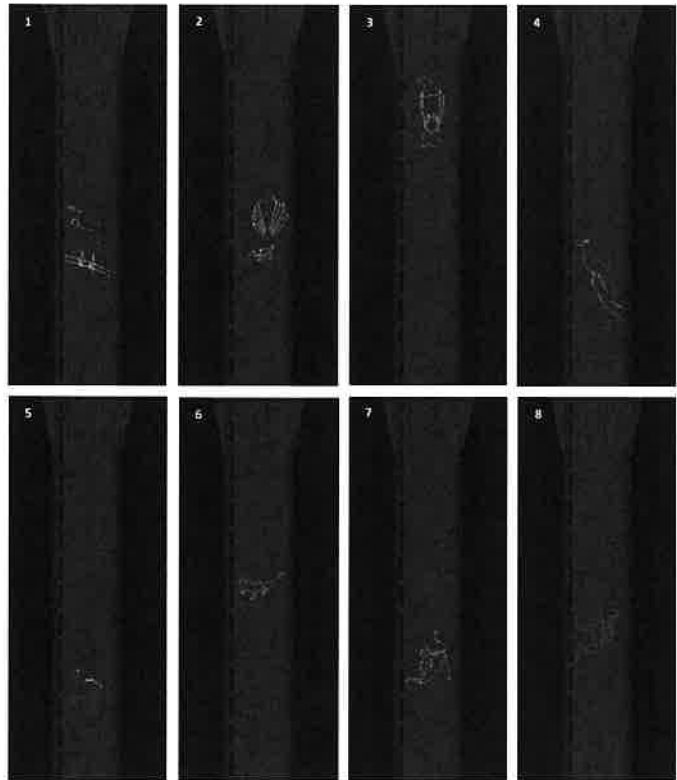
3.1 Kiwiana

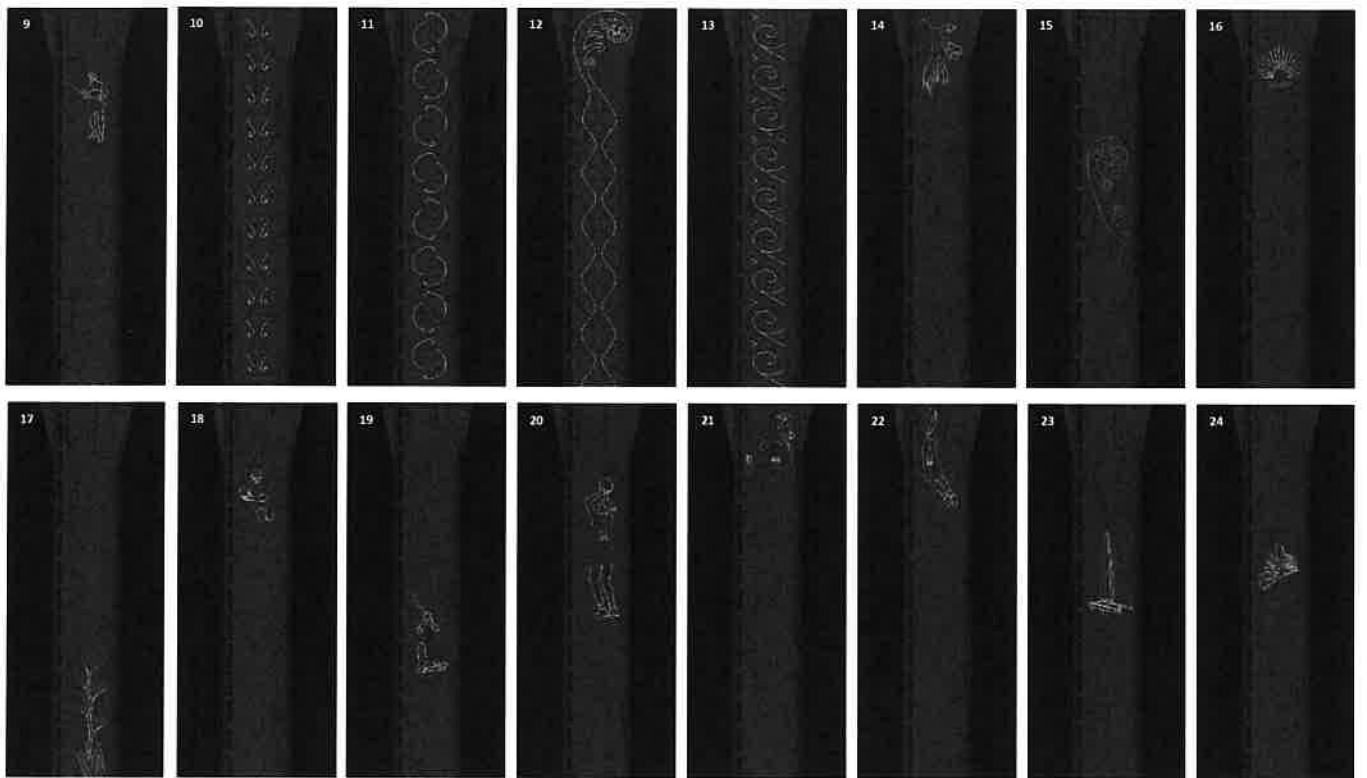
The majority of the show will be 'Kiwiana' content.

This will be a combination of moving animations, static animations and moving abstracts. The static animations will have transition effects (e.g. fades, writing in and out, morphing and moving). While this content is displayed, a countdown will be projected into the wider section of the tower above the shaft (see Section 3.3).

The content is outlined in the table below.

#	Description	Type	Dominant colours
1	Tui	Moving animation	Blue/white/yellow
2	Fantail	Moving animation	White/red
3	Kereru	Moving animation	White/green/red
4	Falcon	Moving animation	Orange/yellow/white
5	Pukeko	Moving animation	Blue/red
6	Tuatara	Moving animation	Green
7	Dolphin	Moving animation	Blue/cyan/white
8	Killer whale	Moving animation	Blue
9	Māori warrior	Moving animation	White/red/green
10 – 13	Kowhai/whāi	Static animation – transition effects	White/red
14	Kowhai	Static animation – transition effects	Yellow/red
15	Fern (koru)	Static animation – transition effects	Green
16	Pohutukawa	Static animation – transition effects	Red/white/green
17	Flax	Static animation – transition effects	Red/white/green
18 – 23	Ironic NZ sports	Static animation – transition effects	Various
24	Skycity logo	3D animation	Yellow/orange



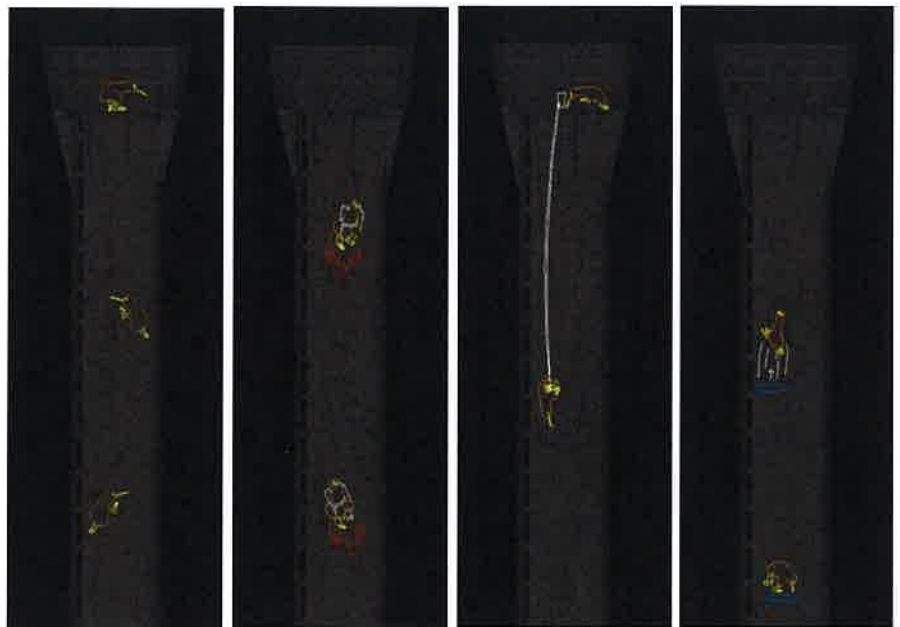


3.2 Main Character – Kiwi

A cartoon styled kiwi which will be the main character of the show. The kiwi will ascend and descend the tower in a variety of ways. The images to the right illustrate the kiwi.

The table below explains the content of each kiwi sequence.

#	Time	Action
1	9:00pm, 10:00pm, 11:00pm	Kiwi ascends tower by jumping from platforms. Once at the top, the kiwi and pulls the clock numbers out of the ground, initiating the countdown for each hour.
2	9:15pm	Kiwi skydives and parachutes down from top of tower.
3	9:30pm, 10:30pm	Kiwi ascends tower, chasing a bug through portals. The kiwi enters the portals by jumping into them, but doesn't always end up near the bug.
4	9:45pm	Kiwi skis down the tower.
5	10:15pm	Kiwi bungee jumps down tower.
6	10:45pm	Kiwi uses jetpack to descent and fly around tower.
7	11:15pm	Kiwi does somersaults from platforms down the tower.
8	11:30pm	Same as animation 3, but chases back down tower to finish at the bottom and gets bug.
9	11:48pm	Kiwi ascends tower by jumping on moving platforms, dances at top and pulls level to activate 10 minute countdown.



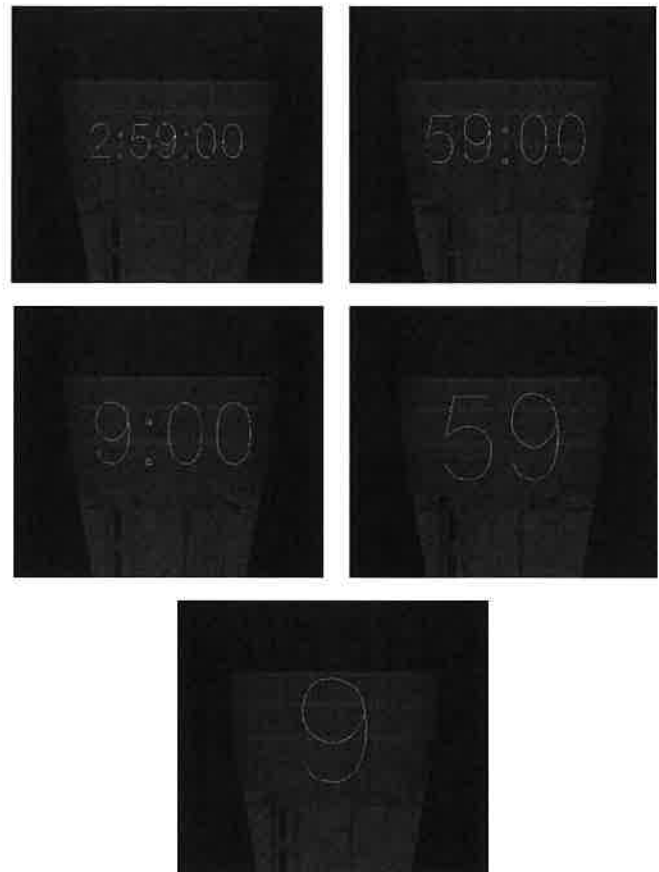
3.3 Countdown

A countdown will be projected onto the wider section of the tower above the shaft. This will be displayed for the majority of the show, except during the kiwi sequences (see Section 3.2) and the message sequences (see Section 3.4).

The countdown will increase in size during the last hour.

The image below shows the countdown as it will be shown on the tower during the 'Kiwiana' sequences (see Section 3.1).

The images to the right show the different sizes of the numbers.



3.4 Messages

Messages will scroll across the wider section of the tower above the shaft. The scrolling direction will be left to right. No other content will be displayed during the messages.

The table below shows the message content and times.

The images to the right illustrate how the messages will appear on the tower.

#	Time	Text
1	8:58pm	"Welcome to New Year's Eve – brought to you by SKYCITY! 3 hours to go until 2019!" "Nau mai ki te tau hou – ka mihi atu a SKYCITY ki a kotou katoa! 3 haora e toi ana ki te tai hou 2019!"
2	9:28pm	"Welcome to New Year's Eve – brought to you by SKYCITY! 2.5 hours to go until 2019!" "Nau mai ki te tau hou – ka mihi atu a SKYCITY ki a kotou katoa! 2.5 haora e torana kite tai hou 2019!"
3	9:58pm	"Welcome to New Year's Eve – brought to you by SKYCITY! 2 hours to go until 2019!" "Nau mai ki te tau hou – ka mihi atu a SKYCITY ki a kotou katoa! 2 haora e toi ana ki te tai hou 2019!"
4	10:28pm	"Welcome to New Year's Eve – brought to you by SKYCITY! 1.5 hours to go until 2019!" "Nau mai ki te tau hou – ka mihi atu a SKYCITY ki a kotou katoa! 1.5 haora e torana kite tai hou 2019!"
5	10:58pm	"Welcome to New Year's Eve – brought to you by SKYCITY! 1 HOUR TO GO UNTIL 2019!" "Nau mai ki te tau hou – ka mihi atu a SKYCITY ki a kotou katoa! 1 HAORA E TOI ANA KI TE TAI HOU 2019!"
6	11:10pm	"Farewell 2018!" "Haere rā 2018!"
7	11:14pm	"45 MINUTES TO GO UNTIL 2019!" "45 MENETI E TOI ANA KI TE TA HOU 2019!"
8	11:20pm	"Farewell 2018!" "Haere rā 2018!"
9	11:29pm	"30 MINUTES TO GO UNTIL 2019!" "30 MENETI E TOI ANA KI TE TA HOU 2019!"
10	11:39pm	"20 MINUTES TO GO UNTIL 2019!" "20 MENETI E TOI ANA KI TE TA HOU 2019!"
11	11:49pm	"10 MINUTES TO GO UNTIL 2019!" "10 MENETI E TOI ANA KI TE TA HOU 2019!"
12	0:00am	"HAPPY NEW YEAR FROM SKYCITY!" "NAU MAI KI TE TAU HOU – KA MIHI ATU A SKYCITY KI A KOTOU KATOAI!"
13	0:05am	"HAPPY NEW YEAR FROM SKYCITY!" "NAU MAI KI TE TAU HOU – KA MIHI ATU A SKYCITY KI A KOTOU KATOAI!"



3.5 Fireworks

Firework type animations will be projected onto the tower during the midnight firework show.
The animations will be synchronised to the pyrotechnic show.

