

**DECISION UNDER DELEGATED AUTHORITY ON AN APPLICATION
BY SKYCITY CASINO MANAGEMENT LIMITED FOR APPROVAL OF
A NEW FLOOR PLAN FOR THE AUCKLAND CASINO**

Date of Decision: 2 December 2016

1. On 28 November 2016, SKYCITY Casino Management Limited ("SCML") applied, pursuant to condition 11 of its operator's licence for the Auckland casino, for approval of a new floor plan, 2016 L6 002.

2. Condition 11 provides as follows:

The Licence Holder shall operate in accordance with approved floor layouts showing the position of gaming tables and gaming machines. The Licence Holder shall obtain approval for new floor plans prior to relocating or installing tables or machines in positions not specified in approved floor layouts. When applying, the Licence Holder must submit fresh plans showing the floor layout for the Gambling Area and details of the proposed CCTV layout for consideration. Any change must comply with the Surveillance Standard. The Executive Director and a single Gambling Commissioner may approve the new floor plans if they are satisfied that the floor layout has no potentially adverse effects. If they are not so satisfied, the proposed floor plan must be referred to the Commission for a decision on approval.

3. SCML submitted as follows:

(a) It currently operates plan 2016 L6 001. It wants to implement plan 2016 L6 002 which provides for the installation of 10 fully automatic table games. This is intended to be a permanent arrangement.

(b) At all times the number of EGMs and gaming tables (including substitute tables) will comply with licence conditions and the mix of games will also comply with the approved game mixes.

4. The proposal raises no issues of regulatory concern for the Commission. Accordingly plan 2016 L6 002 (**attached**) is approved by the Chief Gambling Commissioner and the Executive Director under delegated authority pursuant to condition 11 SCML's operator's licence for the Auckland casino.




5. Once SCML is reliant on plan 2016 L6 002, plan 2016 L6 001 will cease to be valid.



Graeme Reeves
Chief Gambling Commissioner
Gambling Commission


**GAMBLING
COMMISSION**

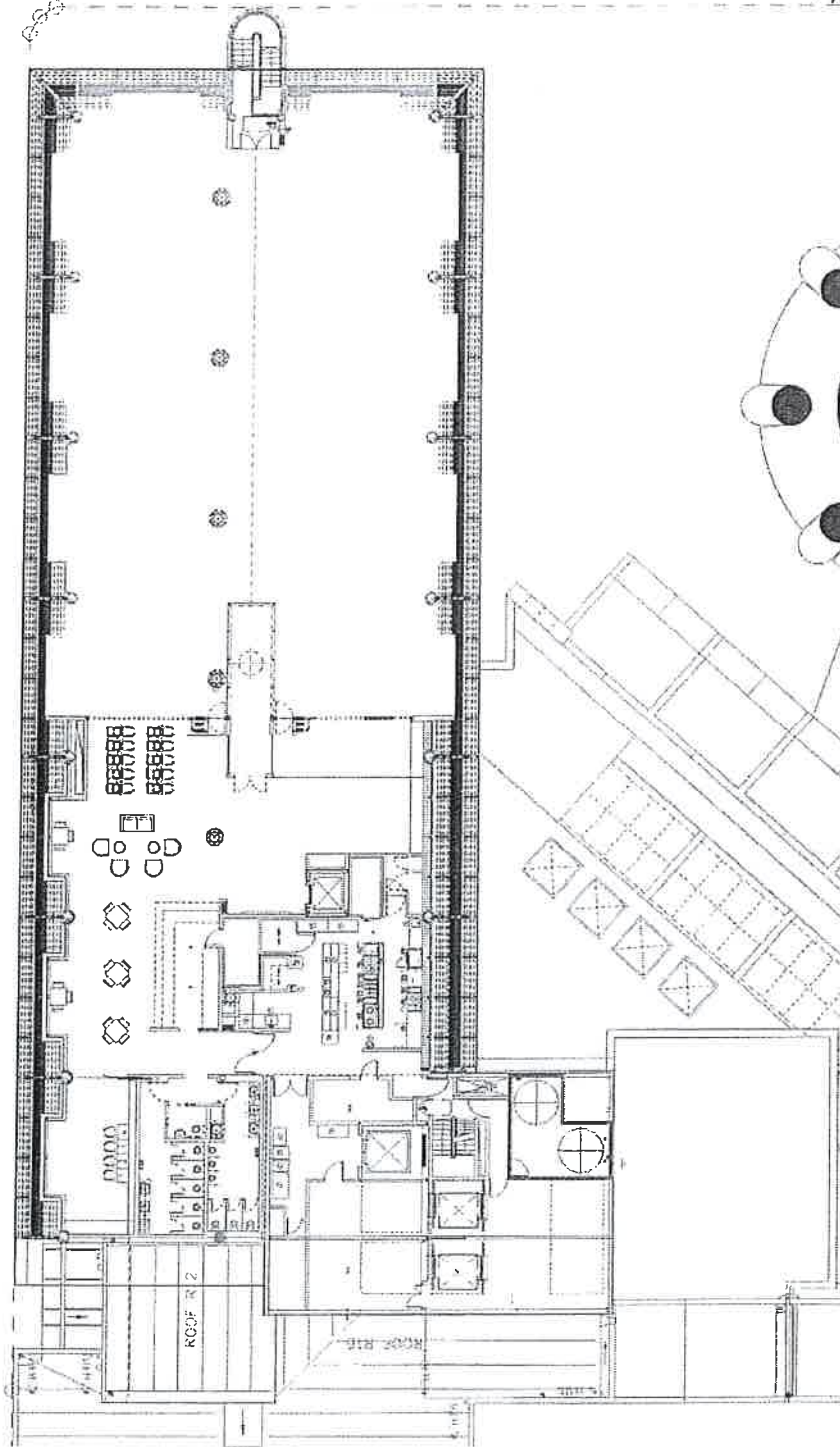
24 December 2016



Nick Paterson
Executive Director
Gambling Commission

Drawing Title: 15 New Table - 1/24

DATE: 01/04/16 BY: JAC/ML/ML FOR: 15/16/16



SKYCITY - NINE

NOT TO SCALE

Finalized drawings. Please refer to the notes on the drawings.



Handwritten signature in blue ink.