

**DECISION UNDER DELEGATED AUTHORITY ON AN APPLICATION
BY SKYCITY CASINO MANAGEMENT LIMITED FOR APPROVAL OF
NEW FLOOR PLANS FOR THE AUCKLAND CASINO**

Date of Decision: 21 November 2016

1. On 10 November 2016, SKYCITY Casino Management Limited ("SCML") applied, pursuant to condition 11 of its operator's licence for the Auckland casino, for approval of a new floor plan, 2016 L5 002.

2. Condition 11 provides as follows:

The Licence Holder shall operate in accordance with approved floor layouts showing the position of gaming tables and gaming machines. The Licence Holder shall obtain approval for new floor plans prior to relocating or installing tables or machines in positions not specified in approved floor layouts. When applying, the Licence Holder must submit fresh plans showing the floor layout for the Gambling Area and details of the proposed CCTV layout for consideration. Any change must comply with the Surveillance Standard. The Executive Director and a single Gambling Commissioner may approve the new floor plans if they are satisfied that the floor layout has no potentially adverse effects. If they are not so satisfied, the proposed floor plan must be referred to the Commission for a decision on approval.

3. SCML submitted as follows:

(a) It has just obtained approval to remove a wall in the area known as "Eight" on level 5. Once this design change is implemented it wants to install two additional gaming tables into the area where the wall was located.

(b) It will ensure the necessary adjustments will be made to the CCTV layout to ensure appropriate coverage of the additional tables in accordance with the Surveillance Standard.

4. The proposal raises no issues of regulatory concern for the Commission. Accordingly plan 2016 L5 002 (**attached**) is approved by the Chief Gambling Commissioner and the Executive Director under delegated authority pursuant to condition 11 SCML's operator's licence for the Auckland casino.

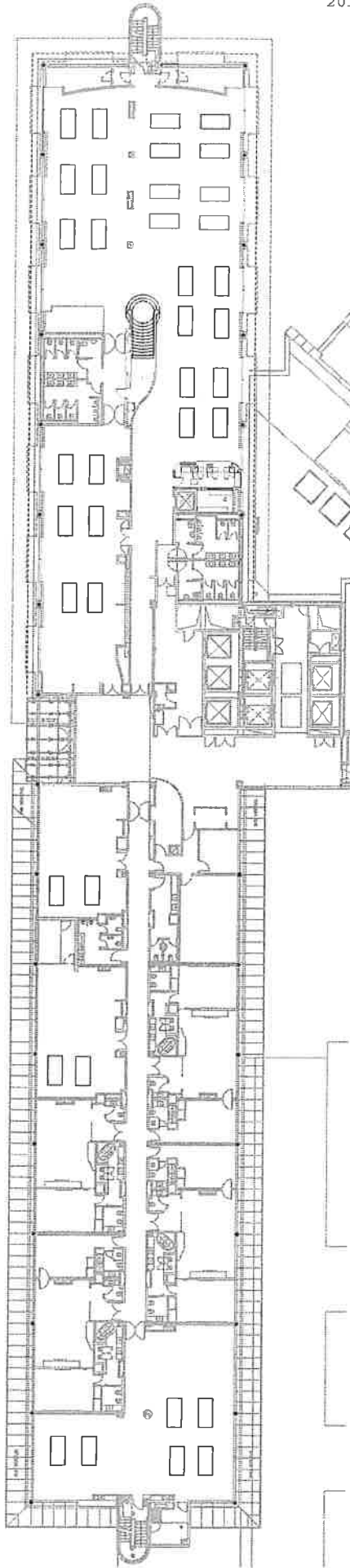
5. Once SCML is reliant on plan 2016 L5 002, plan 2015 L5 001 will cease to be valid.


Graeme Reeves
Chief Gambling Commissioner
Gambling Commission

21* November 2016




Nick Paterson
Executive Director
Gambling Commission



The substitute table(s) denoted on the approved MGF plan may be paired with the corresponding number of tables in salons 82, 86 and 88 as shown on this plan on a game type for game type basis. The casino games deployed on the substitute table(s) shall be consistent with an approved game mix for the salon tables and the number of table games in use shall not exceed the approved total.

