

**DECISION UNDER DELEGATED AUTHORITY ON AN APPLICATION
BY SKYCITY CASINO MANAGEMENT LIMITED FOR APPROVAL OF
NEW FLOOR PLANS FOR THE AUCKLAND CASINO**

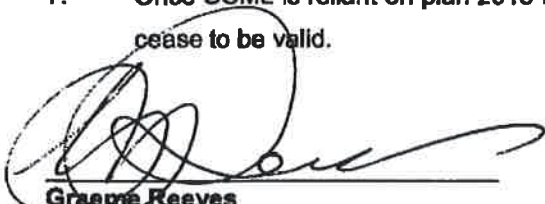
Date of Decision: 20 October 2016

1. On 13 October 2016, SKYCITY Casino Management Limited ("SCML") applied, pursuant to condition 11 of its operator's licence for the Auckland casino, for approval of three new floor plans, 2016 L2 007, 2016 L6 001, and 2016 Level 7 Grand 003.
2. Condition 11 provides as follows:

The Licence Holder shall operate in accordance with approved floor layouts showing the position of gaming tables and gaming machines. The Licence Holder shall obtain approval for new floor plans prior to relocating or installing tables or machines in positions not specified in approved floor layouts. When applying, the Licence Holder must submit fresh plans showing the floor layout for the Gambling Area and details of the proposed CCTV layout for consideration. Any change must comply with the Surveillance Standard. The Executive Director and a single Gambling Commissioner may approve the new floor plans if they are satisfied that the floor layout has no potentially adverse effects. If they are not so satisfied, the proposed floor plan must be referred to the Commission for a decision on approval.
3. SCML submitted as follows:
 - (a) On level 2 it wants to deploy 42 electronic gaming machines ("EGMs") onto the Diamond Terrace. It also wants to change the configuration of tables in Sammy's Bar. Where necessary it will make adjustments to the CCTV layout to ensure the plan conforms to the requirements of the Surveillance Standard.
 - (b) It has previously received approval for plan 2013 L6 001 which allows for the location of six EGMs in a private dining room. There are currently no EGMs in this area, however it wants to now place four EGMs in this location using a slightly different configuration to the previously approved plan. The new plan will have CCTV coverage which satisfies the requirements of the Surveillance Standard.
 - (c) It currently has four EGMs in one of the salons on level 7. It wants to remove one EGM leaving a revised configuration of three.
 - (d) It wants to commence these transitions in early November.
4. The proposal raises no issues of regulatory concern for the Commission. Accordingly plans 2016 L6 001, 2016 Level 7 Grand 003, and 2016 L2 007 (attached) are approved by the Chief Gambling Commissioner and the Executive Director under delegated authority pursuant to condition 11 SCML's operator's licence for the Auckland casino.




5. Once SCML is reliant on plan 2016 L2 007, plan 2016 L2 006 will cease to be valid.
6. Once SCML is reliant on plan 2016 L6 001, plan 2013 L6 001 will cease to be valid.
7. Once SCML is reliant on plan 2016 Level 7 Grand 003, plan 2016 Level 7 Grand 002 will cease to be valid.



Graeme Reeves
Chief Gambling Commissioner
Gambling Commission

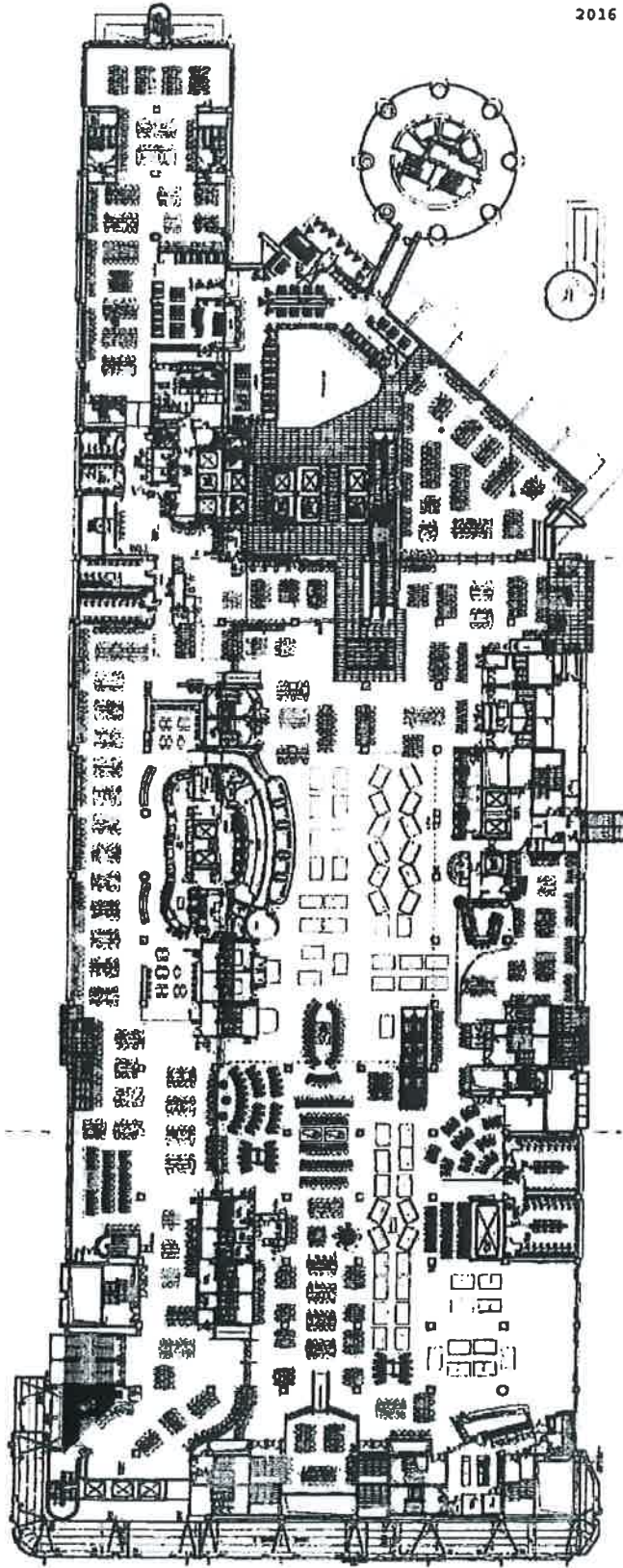
GR October 2016



Nick Paterson
Executive Director
Gambling Commission

2016 L2 007

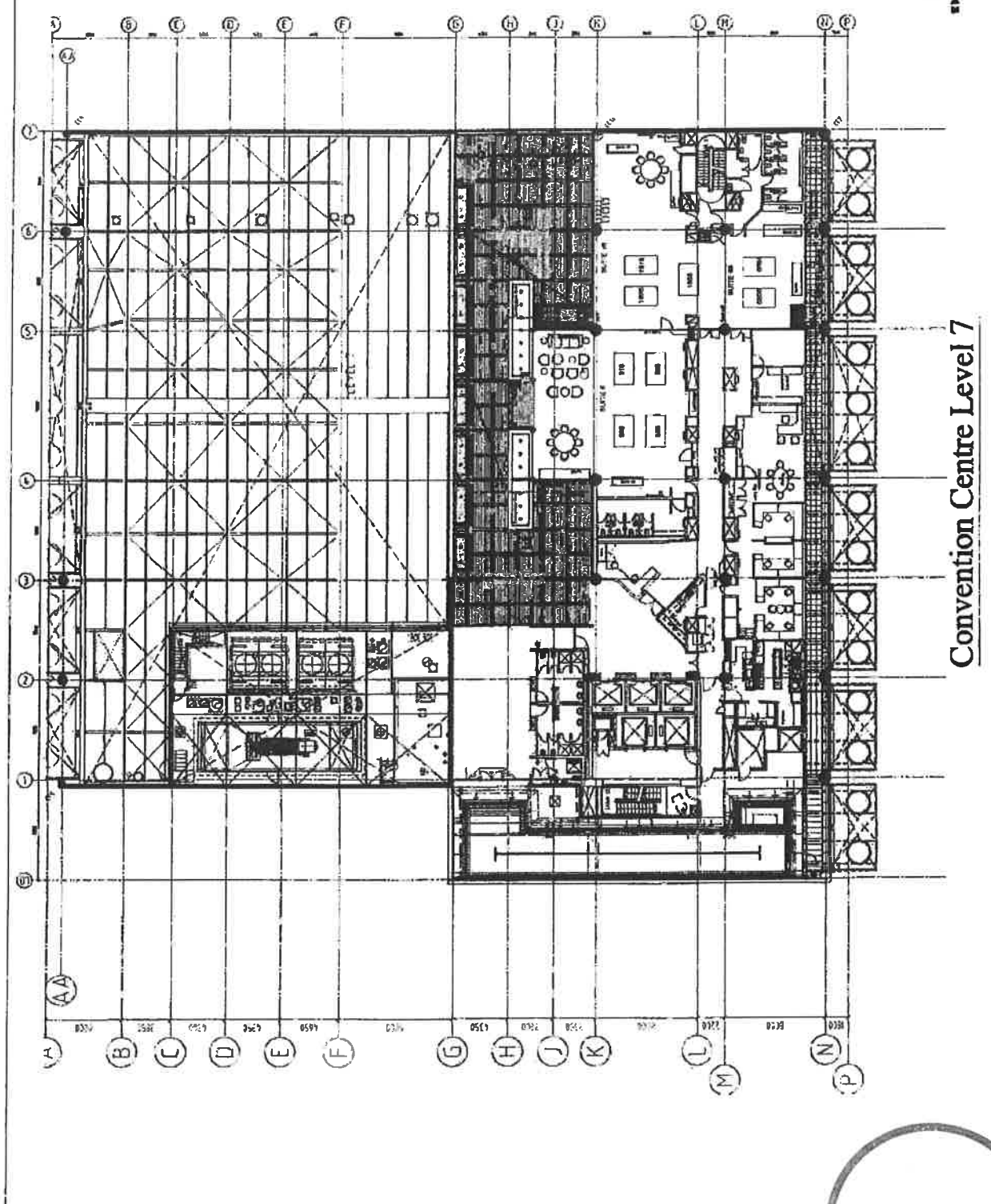
2016 L2 007



SKY CITY LEVEL 2 MGF



2016 L2 007



Convention Centre Level 7

DO NOT SCALE

