

**DECISION UNDER DELEGATED AUTHORITY ON AN APPLICATION  
BY SKYCITY AUCKLAND LIMITED FOR APPROVAL OF  
NEW SIGNAGE AT THE AUCKLAND CASINO**

**Date of Decision:** 17 August 2016

1. On 16 August 2016, SKYCITY Auckland Limited ("**SCAL**") applied, pursuant to condition 6 of its venue licence, for approval to display signage in the plaza area at the Auckland casino.

2. Condition 6 provides as follows:

6. The Licence Holder must obtain the approval of the Commission prior to:

(a) ...

(b) ...

(c) the addition or alteration of signage relating to the casino business on any building, road or structure within the block of land bounded by Hobson Street, Wellesley Street West, Federal Street and Victoria Street West, including the Casino Venue, Sky Tower, car park, bus terminal and walkways between the casino and the Sky Tower and the convention centre.

The process by which the Licence Holder may obtain approval for construction or design changes to Levels 2, 3, 5 and 6 of the casino venue, including the Gambling Area (paragraph (a) above) is set out in condition 7. The Commission will determine any application for approval under 6(b). The Executive Director may approve the addition or alteration of signage relating to the casino business on any building, road or structure within the casino block (paragraph (c) above) if he/she is satisfied the proposed changes will have no potentially adverse effects. If he/she is not so satisfied, the proposed changes must be referred to the Commission for a decision on approval.

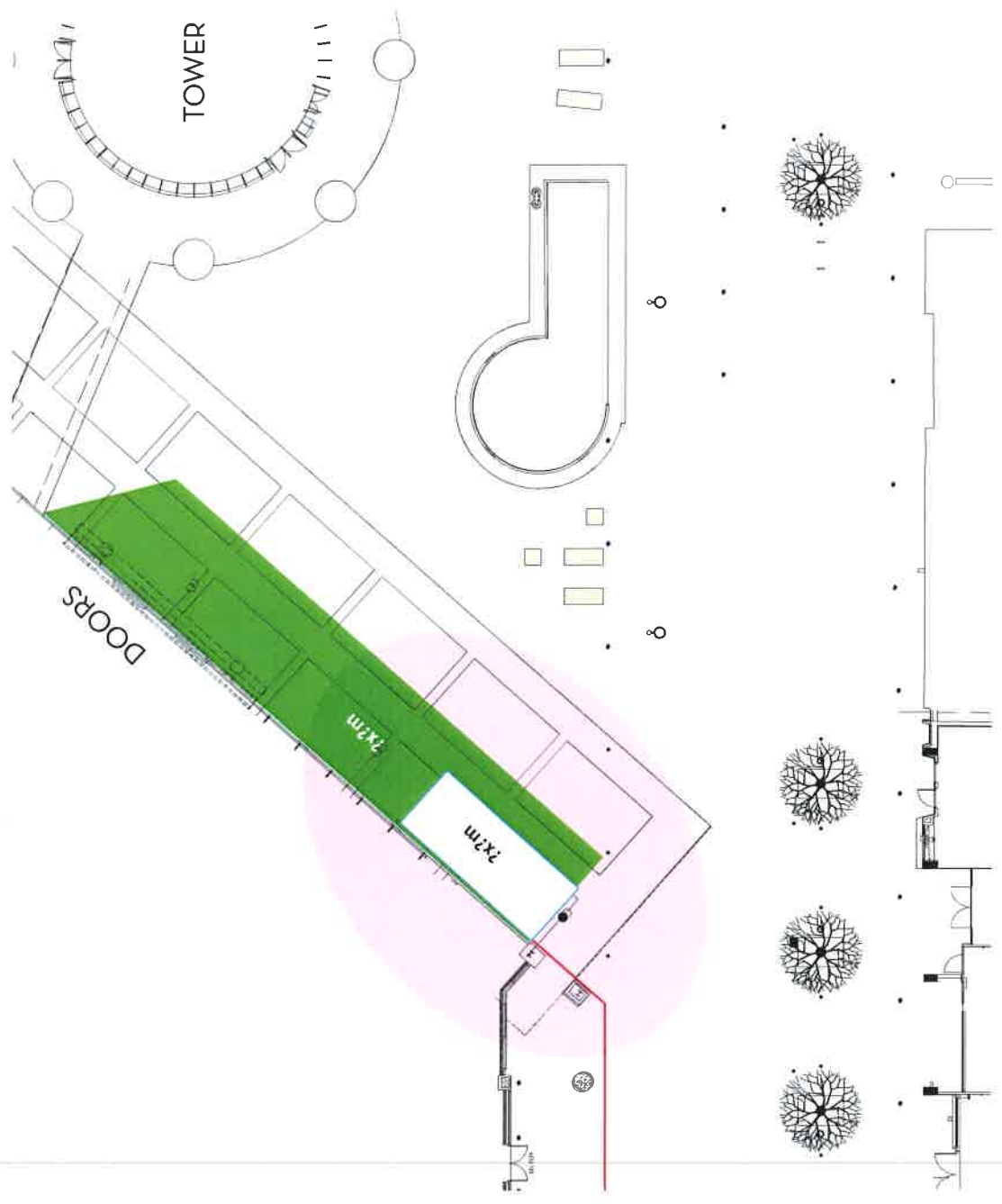
3. The proposal will have no potentially adverse effects and is approved by the Executive Director under delegated authority pursuant to condition 6 SCAL's venue licence. A copy of the signage is **attached**.

  
**Blair Cairncross**  
Executive Director  
Gambling Commission

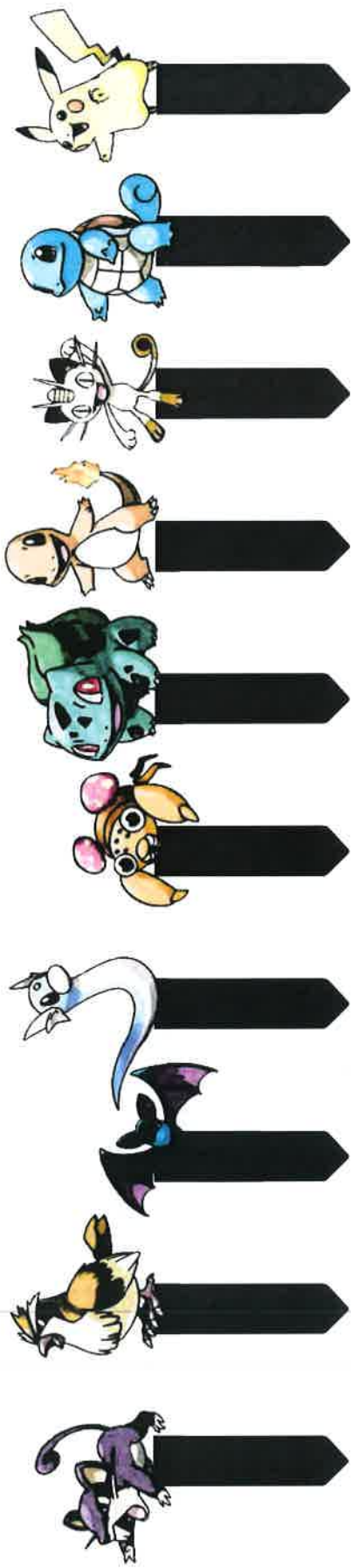


17 August 2016

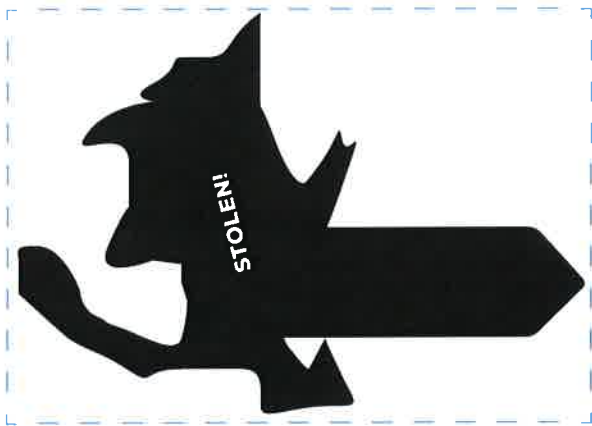
PLAN VIEW



CHARACTERS



A5 SIZE CUT OUT



FULL LENGTH

NOTE: ADDITIONAL PLANT LIFE



C L O S E D

OPTION 1/ PRINTED SINGLE PIECE



OPTION 2/ PRINTED BACKGROUND WITH EXTRA CORRUGATED CARD FRAME



# DECAL & FACIA

**5** FRIDGE DOORS



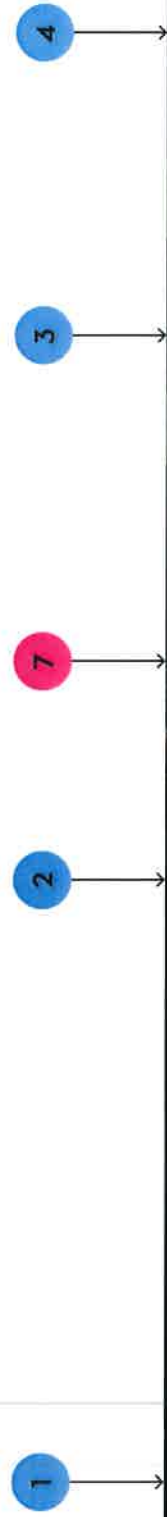
**7A** OPTION A/  
REAL CHALK MENU BOARD



**7B** OPTION B/  
UPDATED PRINT DECAL



# STALL CONCEPT



PLAZA POP UP UPDATE AREAS 2.0

FRIDGE  
DOORS  
x2

