

**DECISION UNDER DELEGATED AUTHORITY ON AN APPLICATION
BY CHRISTCHURCH CASINOS LIMITED FOR APPROVAL OF
NEW SIGNAGE AT THE CHRISTCHURCH CASINO**

Date of Decision: 2 September 2025

1. On 2 September 2025, Christchurch Casinos Limited (“**CCL**”) applied, pursuant to condition 6 of its venue licence, for approval to display signage in the lobby at the main entrance to the Christchurch Casino.

2. Condition 6 provides as follows:

6. The Licence Holder must obtain the approval of the Commission prior to:

(a) ...

(b) ...

(c) the addition or alteration of signage relating to the casino business on the exterior of the casino venue or on or around the building within which it is located.

The process by which the Licence Holder may obtain approval for construction or design changes to Levels B1 and 1 of the Casino Venue (6(a) above) is set out in condition 7. The Commission will determine any application for approval under 6(b). The Executive Director may approve the addition or alteration of signage relating to the casino business on the exterior of the Casino Venue or on or around the building within which it is located (paragraph (c) above) if he/she is satisfied the proposed changes will have no potentially adverse effects. If he/she is not so satisfied, the proposed changes must be referred to the Commission for a decision on approval.

3. The proposed signage will have no potentially adverse effects and is approved by the Executive Director under delegated authority pursuant to condition 6 of CCL’s venue licence. A copy of the signage is **attached**.



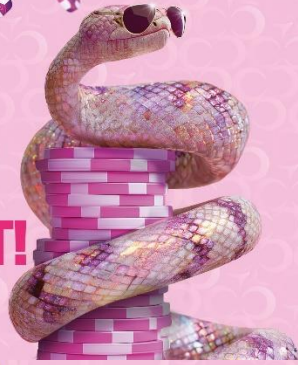
Blair Cairncross
Executive Director
Gambling Commission

2 September 2025



\$1,000
CASH EVERY
HOUR FROM
6PM, TONIGHT!

T&C's apply.



A NEW
WAY TO
FRIDAY.



SWAP YOUR
USUAL FOR
SOMETHING
UNEXPECTED.

\$1,000
CASH EVERY
HOUR FROM
6PM, EVERY
FRIDAY!

T&C's apply.

\$1,000
CASH EVERY
HOUR FROM
6PM, EVERY
FRIDAY!

T&C's apply.



**Every Tue in
Sep multiply your
points for 2 hours!**

**Dice it up! Dice it up! Dice it up!
Dice it up! Dice it up! Dice it up!
Dice it up! Dice it up! Dice it up!
Dice it up! Dice it up! Dice it up!
Dice it up! Dice it up! Dice it up!**

**Dice
it up!**



A large purple area containing multiple dice and the text "Dice it up!" repeated in a white, sans-serif font. On the left side, there is a vertical text block: "Every Tue in Sep multiply your points for 2 hours!". On the right side, there is another vertical text block: "Roll into Rewards! Scan to learn more." Below this text is a QR code enclosed in a white diamond-shaped frame.



\$10
Desserts

\$15
Chicken Schnitzel

Every Saturday
From 12-10pm

With your Players Club card



\$15

Pie of the Day
Ask the team for today's flavour

Every Thursday
From 12-10pm

With your Players Club card



\$15

Toasted Sandwich
Ask the team for today's flavour

Every Tuesday
From 12-10pm

With your Players Club card



\$10
Desserts

\$15
Chicken Schnitzel

Every Saturday
From 12-10pm

With your Players Club card



\$15

Pie of the Day
Ask the team for today's flavour

Every Thursday
From 12-10pm

With your Players Club card



\$15

Toasted Sandwich
Ask the team for today's flavour

Every Tuesday
From 12-10pm

With your Players Club card