

**DECISION UNDER DELEGATED AUTHORITY ON AN  
APPLICATION BY CHRISTCHURCH CASINOS LIMITED FOR APPROVAL OF NEW FLOOR  
PLANS FOR THE CHRISTCHURCH CASINO**

**Date of Decision: 14 April 2022**

1. On 13 April 2022, Christchurch Casinos Limited (“**CCL**”) applied, pursuant to condition 12 of its operator’s licence, for approval of new two floor plans, “Level 1 - Valley Floor Plan - April 2022” and “Level 2 - Gallery Floor Plan - April 2022”.
  
2. Condition 12 of CCL’s operator’s licence provides as follows:
  12. The Licence Holder shall obtain the approval of the Commission for new floor plans prior to relocating or installing tables or machines in positions not specified in approved floor layouts. When applying, the Licence Holder must submit fresh plans showing the floor layout for the Gambling Area and details of the proposed CCTV layout for the consideration of the Commission. Any change must comply with the Surveillance Standard. The Executive Director and a single Gambling Commissioner may approve the new floor plans if they are satisfied that the floor layout has no potentially adverse effects. If they are not so satisfied, the proposed floor plan must be referred to the Commission for a decision on approval.
  
3. CCL submitted as follows:
  - (a) The Government announced that the country is moving from Red to Orange in the traffic light system under the COVID Protection Framework. It seeks approval of 2 new floor plans as the current restrictions on indoor visitors are being lifted.
  - (b) As part of this change, it intends to make operational the EGMs that were previously switched off for physical distancing purposes.
  - (c) In total, it plans to have 32 tables and 453 EGMs in operation, which is fewer than the maximums permitted by its licence conditions (36 tables and 500EGMs). It will also maintain its 15:1 ratio of EGMs to gaming tables.

*Decision*


4. The Commission was satisfied that the proposed floor plans raised no issues of regulatory concern. Accordingly, plans “Level 1 - Valley Floor Plan - April 2022” and “Level 2 - Gallery Floor Plan - April 2022” (**attached**) are approved by the Chief Gambling Commissioner and

the Executive Director under delegated authority, pursuant to condition 12 of CCL's operator's licence for the Christchurch casino.



---

**Lisa Hansen**  
Chief Gambling Commissioner  
Gambling Commission

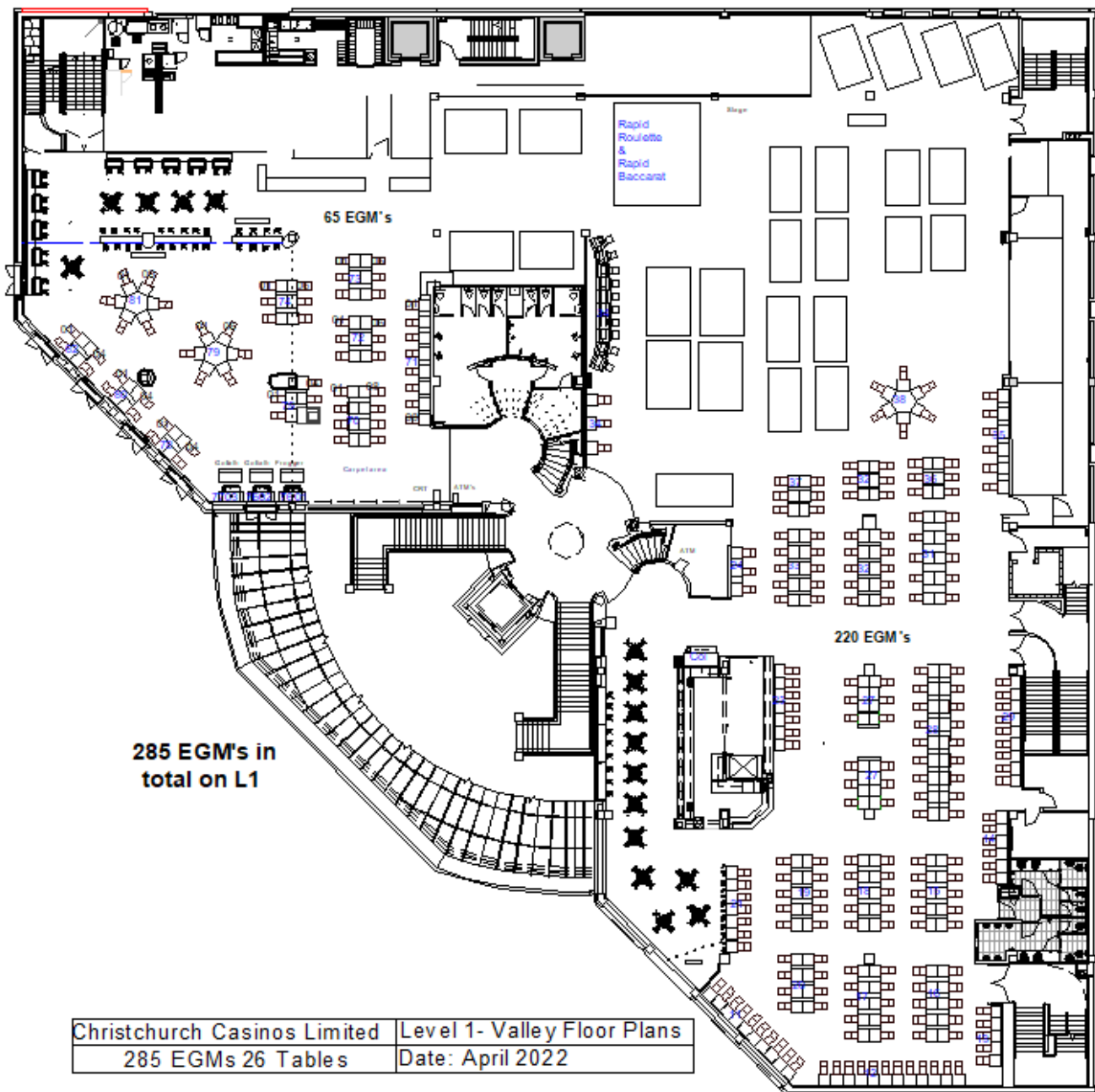


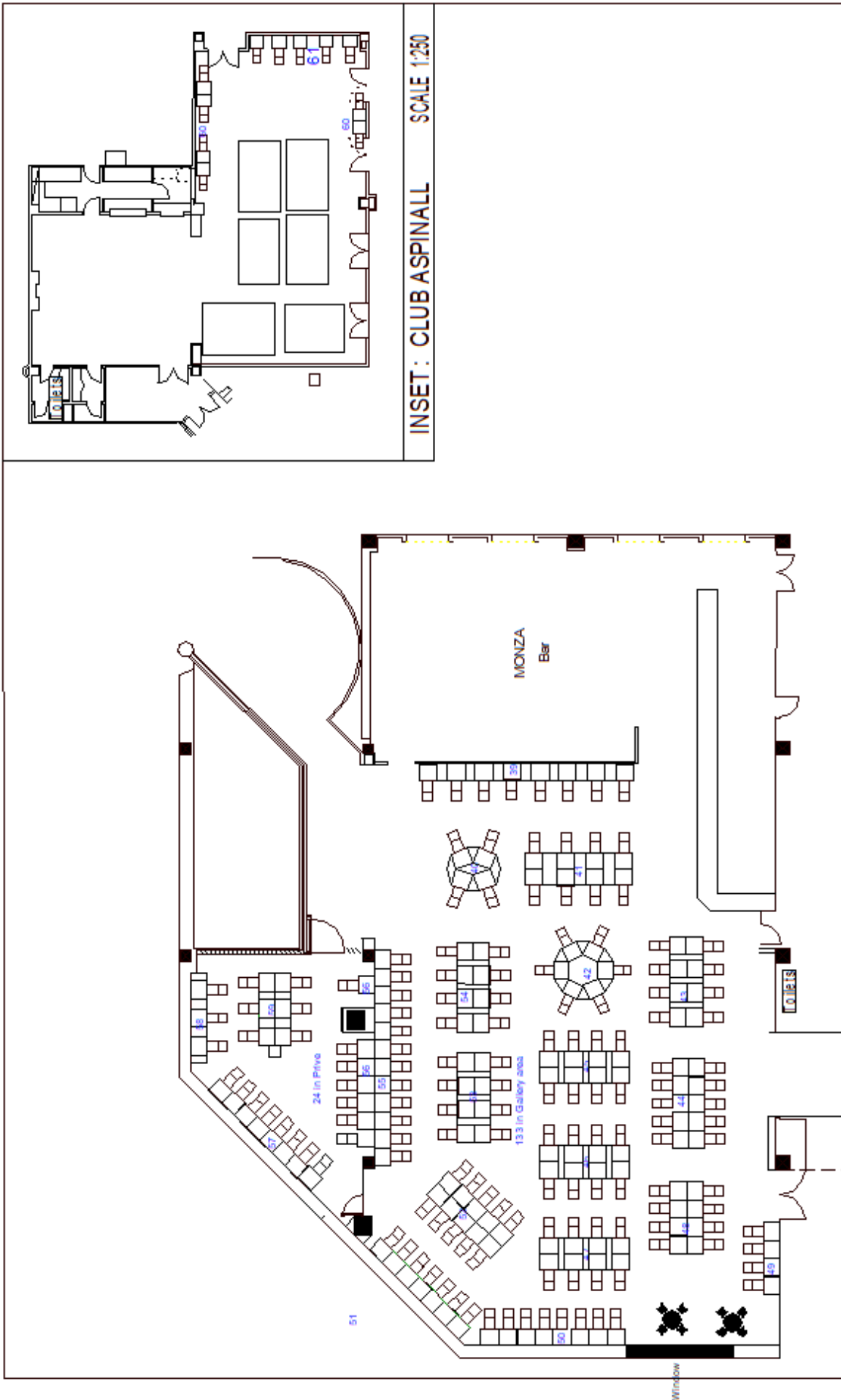
---

**Blair Cairncross**  
Executive Director  
Gambling Commission

14 April 2022







INSET: CLUB ASPINALL SCALE 1:250

Christchurch Casinos Limited	LEVEL 2 - Gallery Floor Plan	DATE: April 2022
	168 MACHINES - 6 Tables	SCALE 1:250