

**DECISION UNDER DELEGATED AUTHORITY ON AN APPLICATION  
BY CHRISTCHURCH CASINOS LIMITED FOR APPROVAL OF  
THREE NEW FLOOR PLANS FOR THE CHRISTCHURCH CASINO**

**Date of Decision: 1 December 2021**

1. On 26 November 2021, Christchurch Casinos Limited Limited (“**CCL**”) applied, pursuant to condition 12 of its operator’s licence, for approval of three new floor plans, “Level 2 Temporary November Approval – Orange setting 2021”, “Level 1 Valley Floor Plan – December 2021” and “Level 2 Gallery Floor Plan – December 2021”.
2. Condition 12 of CCL’s operator’s licence provides as follows:
  12. The Licence Holder shall obtain the approval of the Commission for new floor plans prior to relocating or installing tables or machines in positions not specified in approved floor layouts. When applying the Licence Holder must submit fresh plans showing the floor layout for the Gambling Area and details of the proposed CCTV layout for the consideration of the Commission. Any change must comply with the Surveillance Standard. The Executive Director and a single Gambling Commissioner may approve the new floor plans if they are satisfied that the floor layout has no potentially adverse effects. If they are not so satisfied, the proposed floor plan must be referred to the Commission for a decision on approval.
3. CCL submitted:
  - On 29 November, the Government announced that New Zealand will move to the new COVID traffic light system. It anticipates that Christchurch will move to “Orange” in the system with vaccination requirements as a condition of entry for the casino. This means that there will be no limits in relation to physical distancing and no restrictions on occupancy in relation to defined spaces.
  - Therefore, it wants to return 4 x Poker Tables and make operational all available EGMs, as follows:
    - increase gaming tables on Levels 1 and 2 from 28 to 32;
    - Level 1 – increase EGMs from 238 to 285;
    - Level 2 – increase EGMs from 115 to 172.
  - Once the “Level 2 Gallery Floor Plan – December 2021” is complete, 457 EGMs will be in operation, which is under the permitted maximum of 500.
  - It recently received approval for temporary floor plan “Level 2 Gallery Floor Plan – November 2021”. The planned physical changes approved under “Level 2 Gallery Floor Plan – November 2021” will not be complete by 3 December, so it wants to

transition to its new temporary plan, under which, the maximum operational EGMs will be 467.

4. The proposed floor plans raise no issues of regulatory concern for the Commission. Accordingly plans "Level 2 Temporary November Approval – Orange setting 2021", "Level 1 Valley Floor Plan – December 2021" and "Level 2 Gallery Floor Plan – December 2021" are approved by the Chief Gambling Commissioner and the Executive Director under delegated authority pursuant to condition 12 of CCL's operator's licence for the Christchurch casino. The floor plans are **attached**.
5. The Commission's approvals are limited to the floor plans only, and do not extend to matters over which it has no jurisdiction, such as compliance with the Government's guidelines for COVID-19.



---

**Lisa Hansen**  
Chief Gambling Commissioner  
Gambling Commission

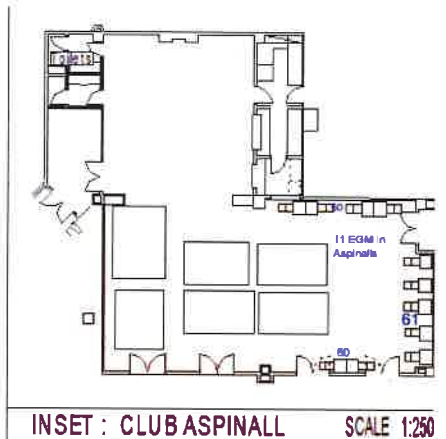
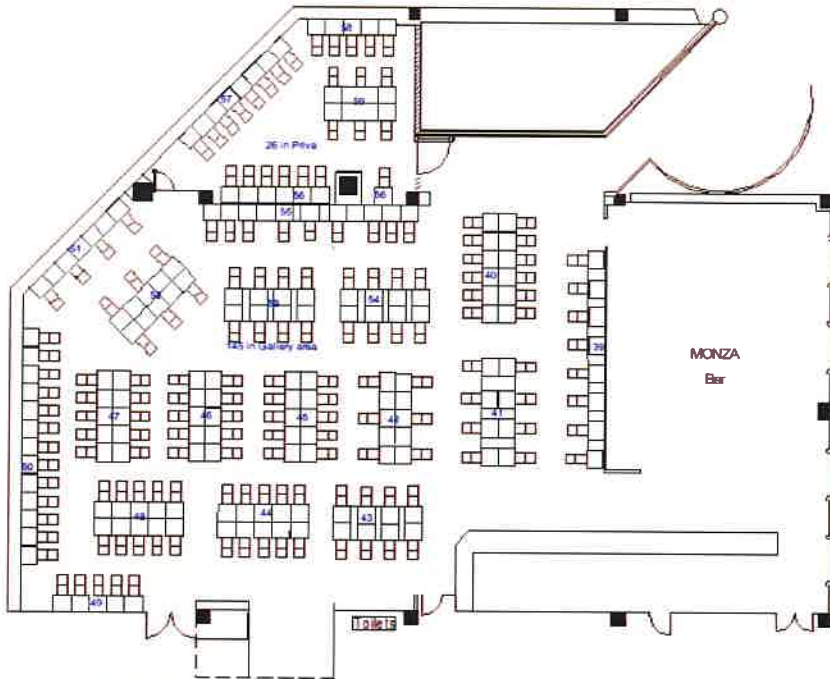


---

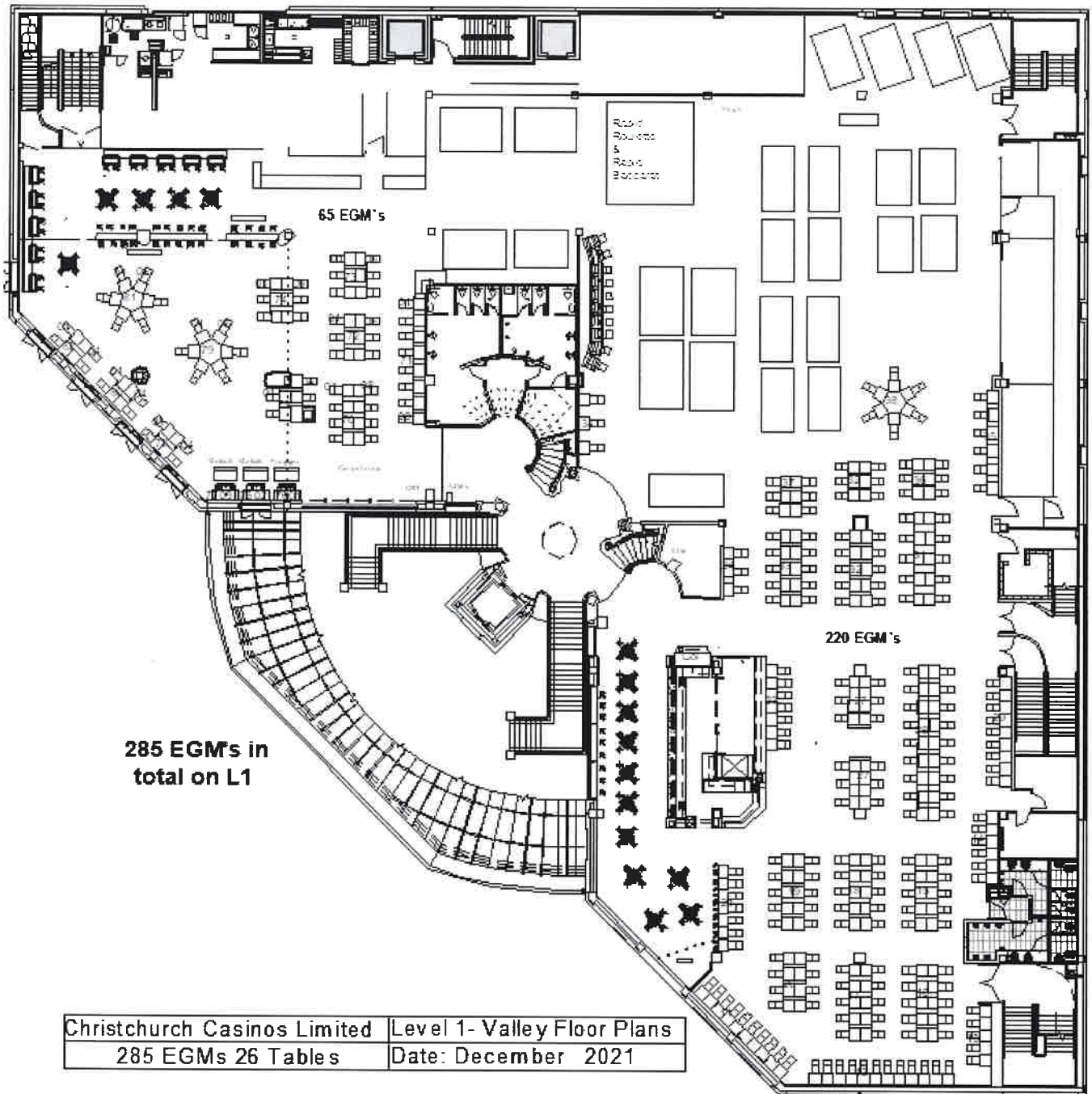
**Blair Cairncross**  
Executive Director  
Gambling Commission

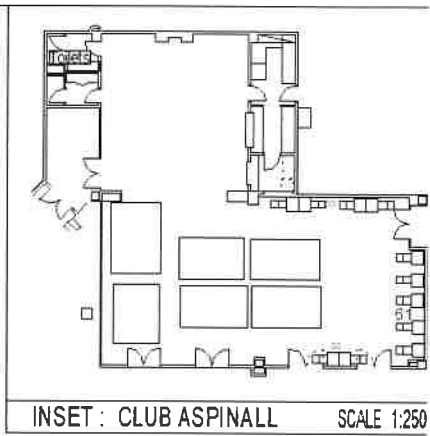
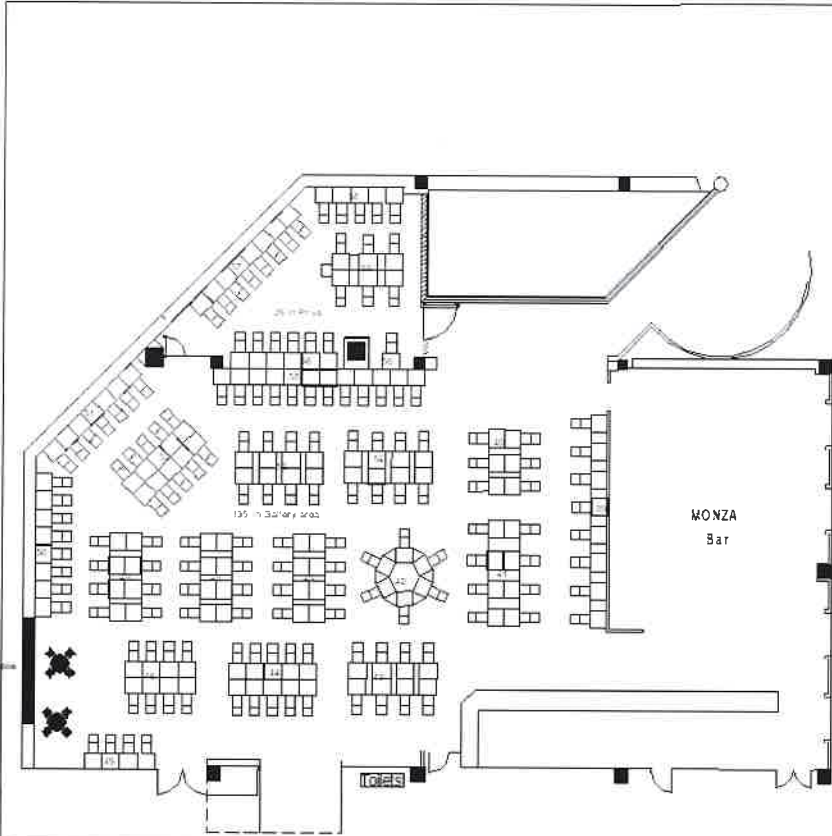
1 December 2021





Christchurch Casinos Limited	Level 2 Temporary November Approval – Orange setting 2021	DATE: December 2021
	182 MACHINES - 6 Tables	SCALE 1:250





INSET : CLUB ASPINALL SCALE 1:250

Christchurch Casinos Limited	LEVEL 2 - Gallery Floor Plan	DATE	December 2021
	172 MACHINES - 6 Tables		SCALE 1:250