

**DECISION UNDER DELEGATED AUTHORITY ON AN APPLICATION
BY CHRISTCHURCH CASINOS LIMITED FOR APPROVAL OF
A NEW FLOOR PLAN FOR THE CHRISTCHURCH CASINO**

Date of Decision: 17 September 2021

1. On 16 September 2021, Christchurch Casinos Limited (“**CCL**”) applied, pursuant to condition 12 of its operator’s licence, for approval of a new floor plan, “Level 2 Gallery Floor Plan September 2021”.

2. Condition 12 provides as follows:

The Licence Holder shall obtain the approval of the Commission for new floor plans prior to relocating or installing tables or machines in positions not specified in approved floor layouts. When applying the Licence Holder must submit fresh plans showing the floor layout for the Gambling Area and details of the proposed CCTV layout for the consideration of the Commission. Any change must comply with the Surveillance Standard. The Executive Director and a single Gambling Commissioner may approve the new floor plans if they are satisfied that the floor layout has no potentially adverse effects. If they are not so satisfied, the proposed floor plan must be referred to the Commission for a decision on approval.

3. CCL submitted:

- It recently obtained approval for a temporary floor plan “Alert Level 2 Delta Top Floor September 2021”, which will cease to be valid once Christchurch leaves COVID Alert Level 2 and enters Alert Level 1.
- It wants to make the temporary floor plan permanent because:
 - there is no certainty of not bouncing between Covid-19 Alert Levels should there be another unexpected outbreak of COVID-19 in the community;
 - to establish the bank of five EGMs in the Aspinalls area requires a lot of work and takes up to 3 days to set up or take down;
 - it needs time for patron levels to stabilise. Patrons are enjoying having more space in and around the room and the social distancing it allows.
- If approved, the total number of EGMs on both gaming floors will be 465, with 32 gaming tables, which is below its permitted maximum of 500 EGMs and 36 gaming tables.
- It will continue to ensure the Commission and local gambling regulators are aware of what it is doing, or planning to do, to ensure ongoing compliance.

4. The proposal raises no issues of regulatory concern for the Commission. Accordingly plan "Level 2 – Gallery Floor Plan September 2021" is approved by the Chief Gambling Commissioner and the Executive Director under delegated authority pursuant to condition 12 of CCL's operator's licence for the Christchurch casino. The floor plan is **attached**.



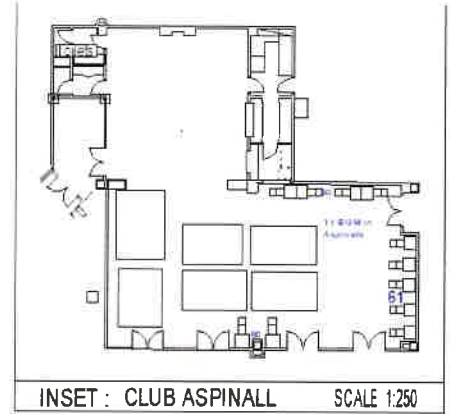
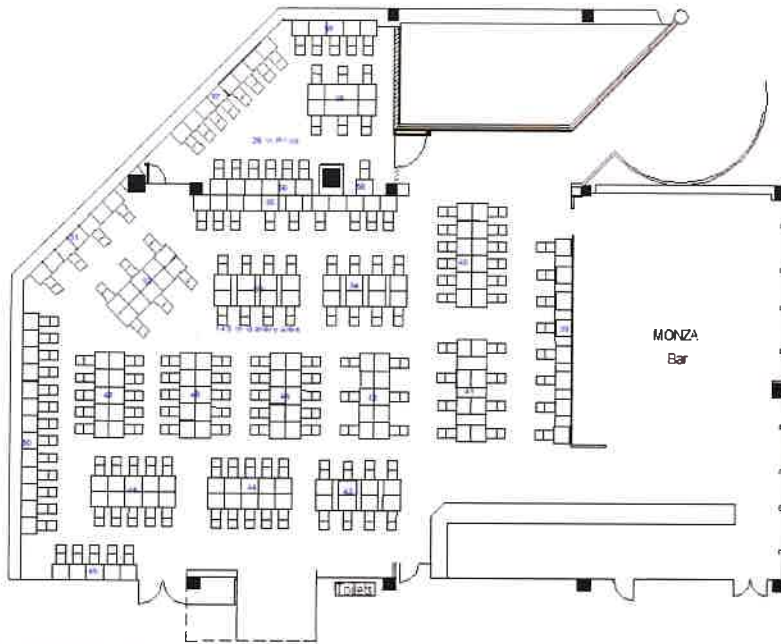
Lisa Hansen
Chief Gambling Commissioner
Gambling Commission



Blair Cairncross
Executive Director
Gambling Commission

17 September 2021





Christchurch Casinos Limited	LEVEL 2 - Gallery Floor Plan 182 MACHINES - 6 Tables	DATE: September 2021
		SCALE 1:250