

**DECISION UNDER DELEGATED AUTHORITY ON AN APPLICATION  
BY CHRISTCHURCH CASINOS LIMITED FOR APPROVAL OF  
A NEW FLOOR PLAN FOR THE CHRISTCHURCH CASINO**

Date of Decision: 6 November 2020

1. On 6 November 2020, Christchurch Casinos Limited (“CCL”) applied, pursuant to condition 12 of its operator’s licence, for approval of a new floor plan, “Level 2-Gallery November 2020”.

2. Condition 12 provides as follows:

The Licence Holder shall obtain the approval of the Commission for new floor plans prior to relocating or installing tables or machines in positions not specified in approved floor layouts. When applying the Licence Holder must submit fresh plans showing the floor layout for the Gambling Area and details of the proposed CCTV layout for the consideration of the Commission. Any change must comply with the Surveillance Standard. The Executive Director and a single Gambling Commissioner may approve the new floor plans if they are satisfied that the floor layout has no potentially adverse effects. If they are not so satisfied, the proposed floor plan must be referred to the Commission for a decision on approval.

3. CCL submitted:

- It has previously applied to, and been granted approval by, the Commission to reduce a bank of EGMs on Level 2 from 12 to eight.
- It now realises it does not need to reduce the bank and wants the number to remain at 12.

4. The proposal raises no issues of regulatory concern for the Commission. Accordingly plan “Level 2-Gallery November 2020” (**attached**) is approved by the Chief Gambling Commissioner and the Executive Director under delegated authority pursuant to condition 12 of CCL’s operator’s licence for the Christchurch casino.

- 5. Once CCL is reliant on plan "Level 2-Gallery November 2020", plan "Level 2-Gallery October 2020" will cease to be valid.



---

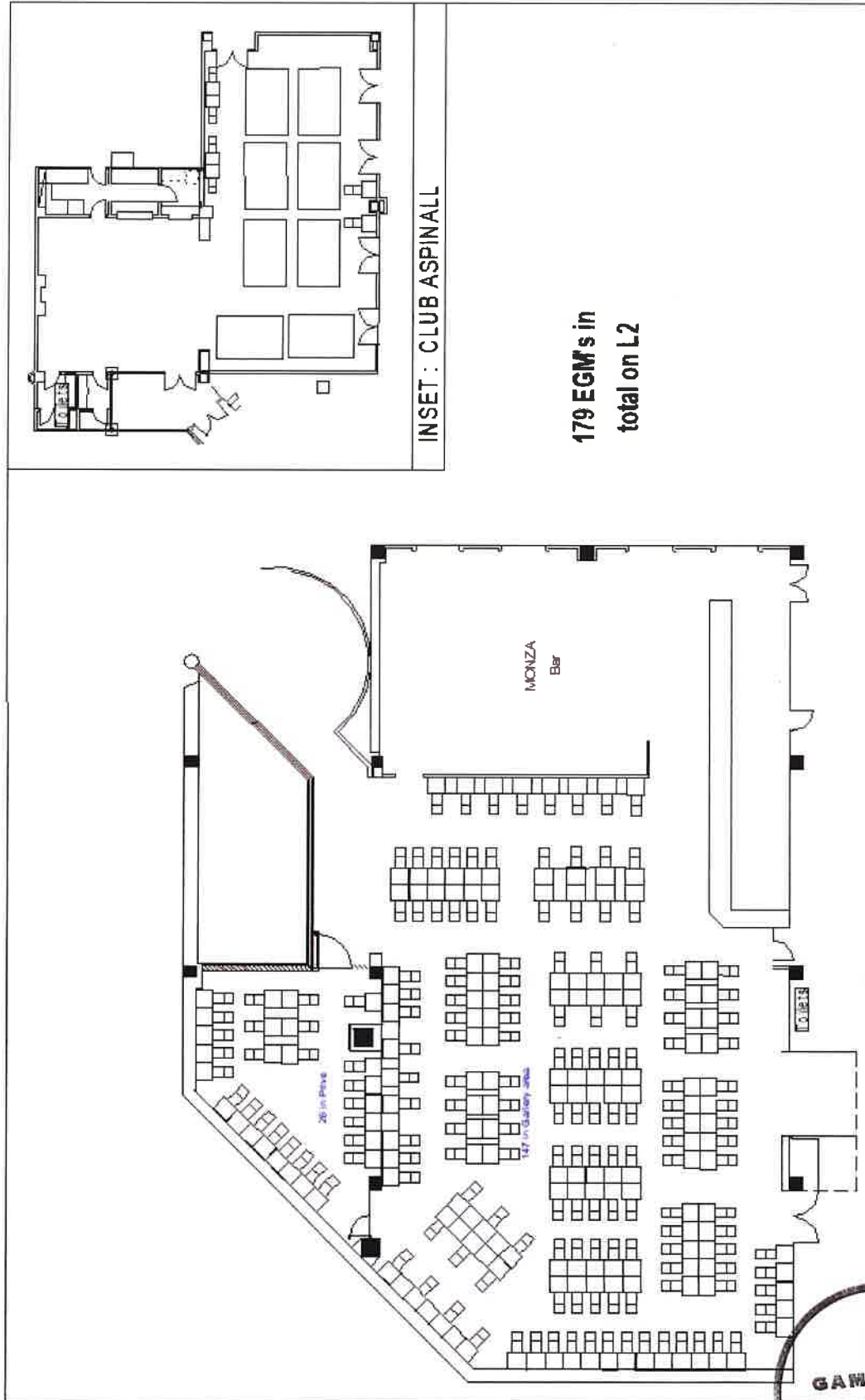
**Lisa Hansen**  
Chief Gambling Commissioner  
Gambling Commission

---

**Blair Cairncross**  
Executive Director  
Gambling Commission

6 November 2020





INSET : CLUB ASPINALL

179 EGM's in total on L2

LEVEL 2 - Gallery Floor Plan  
179 MACHINES - 8 Tables

DATE November 2020  
SCALE 1:250

