

**DECISION UNDER DELEGATED AUTHORITY ON AN APPLICATION  
BY CHRISTCHURCH CASINOS LIMITED FOR APPROVAL OF  
NEW FLOOR PLANS FOR THE CHRISTCHURCH CASINO**

**Date of Decision: 6 July 2020**

1. On 2 July 2020, Christchurch Casinos Limited ("CCL") applied, pursuant to condition 12 of its operator's licence, for approval of new floor plans, "Level 1-MGF July 2020" and "Level 2-Gallery July 2020".

2. Condition 12 provides as follows:

The Licence Holder shall obtain the approval of the Commission for new floor plans prior to relocating or installing tables or machines in positions not specified in approved floor layouts. When applying the Licence Holder must submit fresh plans showing the floor layout for the Gambling Area and details of the proposed CCTV layout for the consideration of the Commission. Any change must comply with the Surveillance Standard. The Executive Director and a single Gambling Commissioner may approve the new floor plans if they are satisfied that the floor layout has no potentially adverse effects. If they are not so satisfied, the proposed floor plan must be referred to the Commission for a decision on approval.

3. CCL submitted:

- It is in a transitional phase as it works with its customers to understand what it is that they want in the current climate, and how it can operationally deliver this for them. For some customers, having more personal space around them is desirable, particularly in the EGM areas. There is also a strong call for the return of Poker tables and these will be needed for a Poker tournament planned for mid-August 2020.
- The proposed changes are as follows:
  - Remove 14 EGMs from the Poker Area and reinstate four Poker tables.
  - The 12 EGMs installed as extensions to two existing banks of EGMs have proven to meet the demand for guests who enjoy more space around them as they play. It therefore plans to keep these in their location. As a consequence, it wants to continue to operate with three fewer Rapid Roulette Terminals and one less table game on the MGF.
  - Remove two sets of two surplus bases on Level 1. It previously had two banks of four EGMs behind the Valley Bar. These have been operated as two pairs

of back-to-back EGMs and it wants to leave these as they are and remove the unused bases from the floor.

- Rather than leaving EGMs in situ and turned off or as a blank space, it wants to spread some banks out on their existing bases. For example, a bank that previously had 10 EGMs has been reduced to eight. These changes allow EGMs on various banks to spread out but do not affect the footprint of the bases on the floor. They occur in multiple locations on both levels.
  - The proposed new floor plans will preserve a greater physical distancing in some areas and as a result its total operational EGMs and gaming tables will be 453 and 35 respectively.
  - The proposed changes either return gaming tables to where they were previously or cater to the feedback received from patrons, to have a variety of EGM spacing available.
4. The proposal raises no issues of regulatory concern for the Commission. Accordingly plans "Level 1-MGF July 2020" and "Level 2-Gallery July 2020" (**attached**) are approved by the Chief Gambling Commissioner and the Executive Director under delegated authority pursuant to condition 12 of CCL's operator's licence for the Christchurch casino.



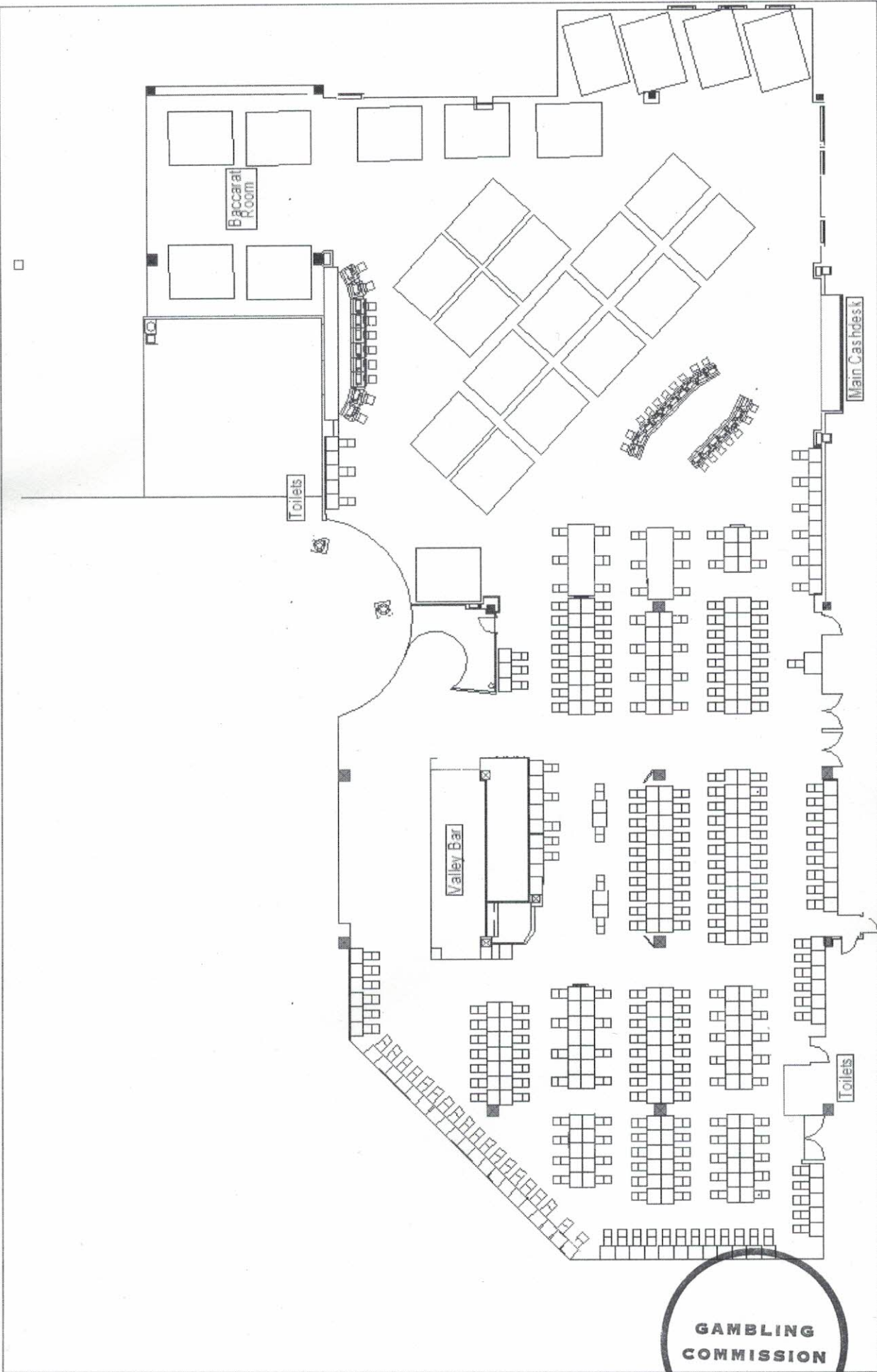
**Lisa Hansen**  
Chief Gambling Commissioner  
Gambling Commission



**Blair Cairncross**  
Executive Director  
Gambling Commission

6 July 2020





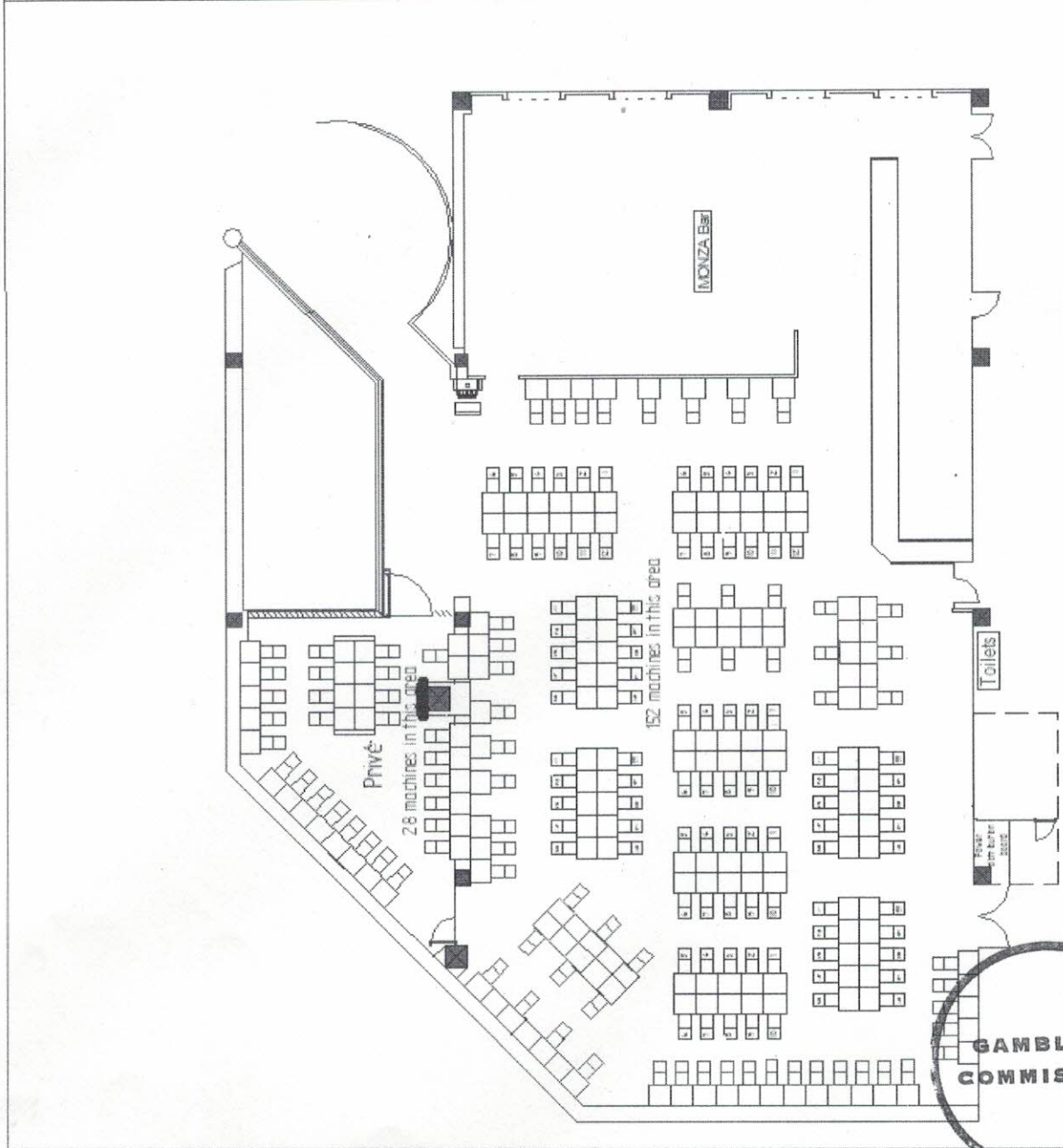
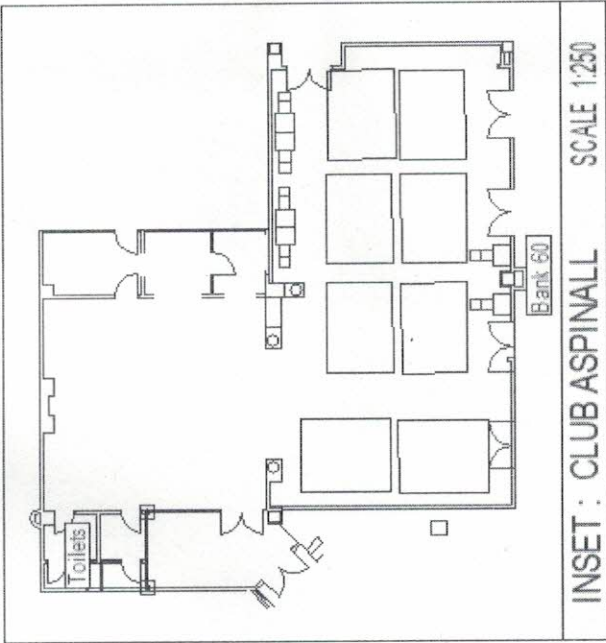
Christchurch Casinos Limited

**LEVEL 1 - MGF Floorplan**

267 MACHINES, 27 TABLES

DATE: July 2020

SCALE 1:250



DATE: July 2020  
SCALE 1:250

**GAMBLING COMMISSION**

Christchurch Casinos Limited