

**DECISION UNDER DELEGATED AUTHORITY ON AN APPLICATION
BY CHRISTCHURCH CASINOS LIMITED FOR APPROVAL OF
NEW FLOOR PLANS FOR THE CHRISTCHURCH CASINO**

Date of Decision: 22 January 2020

1. On 17 January 2020, Christchurch Casinos Limited (“CCL”) applied, pursuant to condition 12 of its operator’s licence, for approval of four new floor plans, Level 1–Floor Plan A, Level 1–Floor Plan B, Level 2–Gallery Floor Plan A and Level 2–Gallery Floor Plan B.

2. Condition 12 provides as follows:

The Licence Holder shall obtain the approval of the Commission for new floor plans prior to relocating or installing tables or machines in positions not specified in approved floor layouts. When applying the Licence Holder must submit fresh plans showing the floor layout for the Gambling Area and details of the proposed CCTV layout for the consideration of the Commission. Any change must comply with the Surveillance Standard. The Executive Director and a single Gambling Commissioner may approve the new floor plans if they are satisfied that the floor layout has no potentially adverse effects. If they are not so satisfied, the proposed floor plan must be referred to the Commission for a decision on approval.

3. CCL submitted:

- It wants to create an alternate floor plan to accommodate an easy transition to, and from, Poker Tournaments.
- Floor Plans A are exactly the same as is currently approved and it wishes to retain these plans. Floor Plans B will most commonly be used to accommodate Poker Tournaments. Effectively, the only difference between the Plans A and B is that one table from the VIP area will be relocated onto the MGF.
- The ability to run more tables on the MGF will help to maximise the use of its approved game mixes, especially during Poker Tournaments when up to 12 tables may be dedicated to Poker. The number of Poker Tournaments is increasing and rather than having to have new plans approved each time, it makes more sense to have an alternate set of plans.
- The Commission has previously approved a similar concept. No gaming table will be opened prior to appropriate camera coverage, which if the proposal is approved, can be left in place. There are no other consequential changes.
- Prior to any change, it will liaise with local Gambling Inspectors to ensure ongoing compliance with licence conditions.

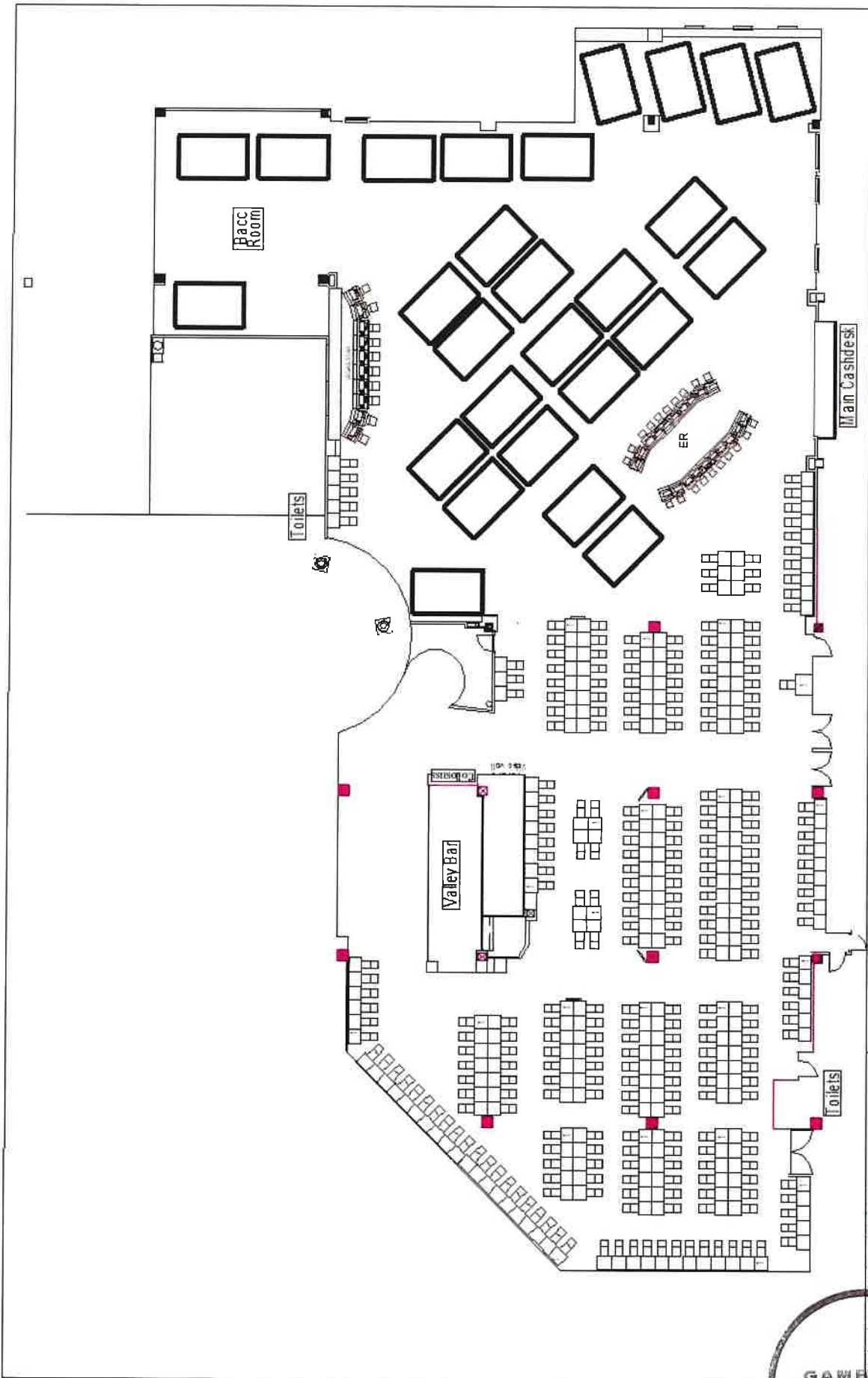
4. The proposal raises no issues of regulatory concern for the Commission. Accordingly plans Level 1–Floor Plan A, Level 1–Floor Plan B, Level 2–Gallery Floor Plan A and Level 2–Gallery Floor Plan B (**attached**) are approved by the Chief Gambling Commissioner and the Executive Director under delegated authority pursuant to condition 12 of CCL's operator's licence for the Christchurch casino.
5. The May 2019 floor plan approved by the Commission will cease to be valid from the date of this decision.

Graeme Reeves
Chief Gambling Commissioner
Gambling Commission

Blair Cairncross
Executive Director
Gambling Commission

22 January 2020





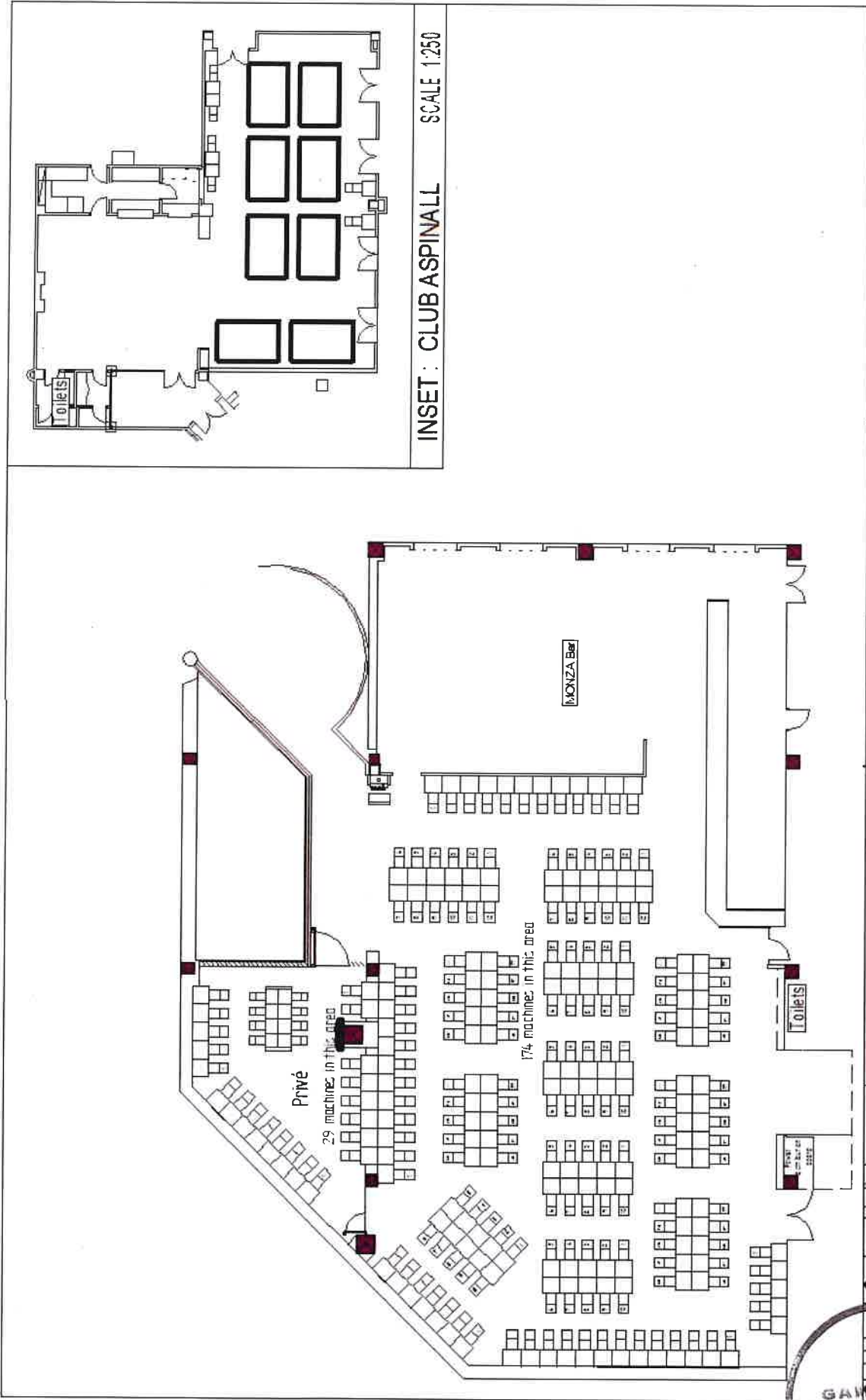
DATE January 2020

LEVEL 1 - Floor plan A

291 MACHINES, 28 TABLES

SCALE 1:250





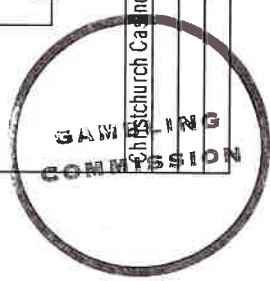
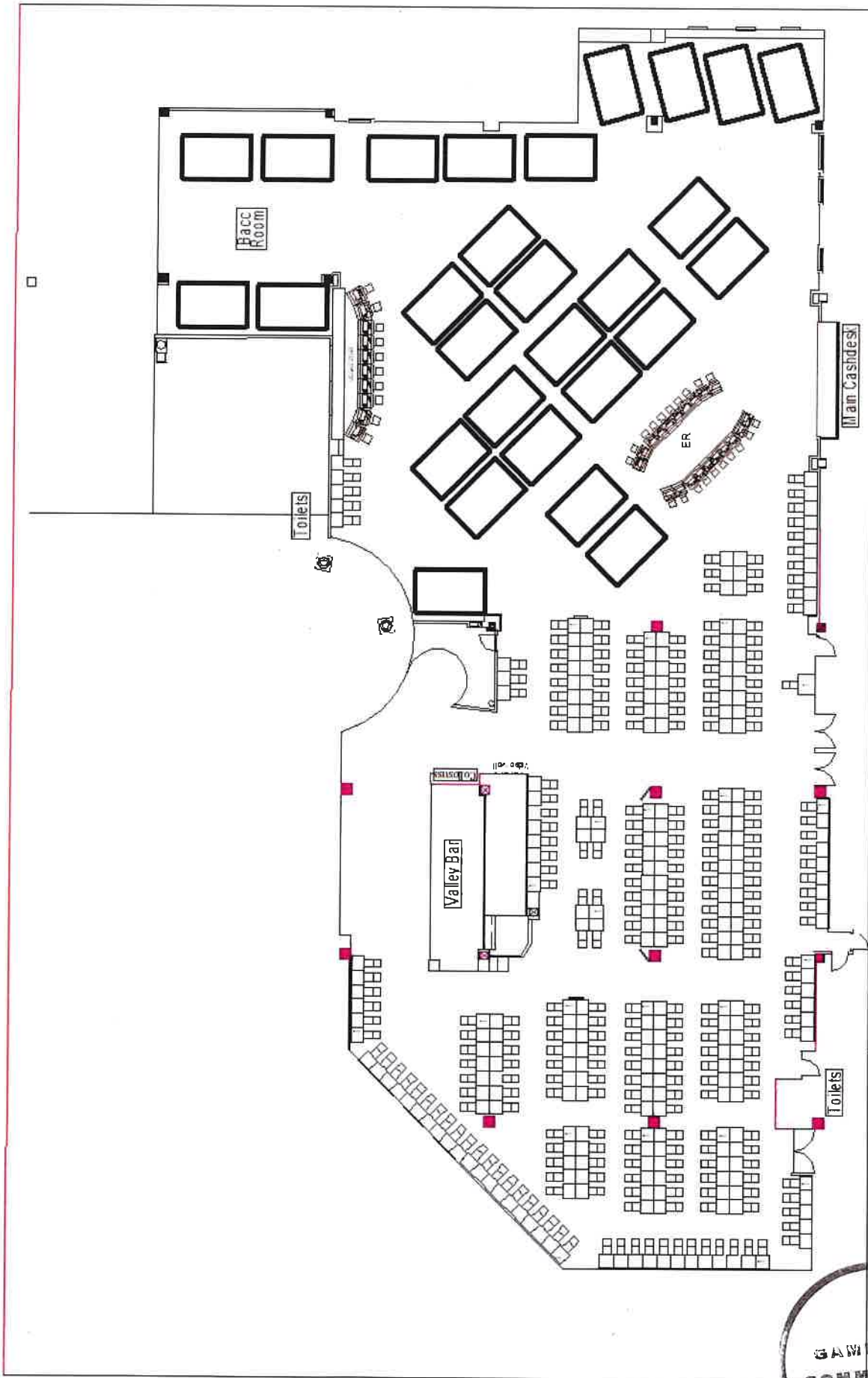
INSET : CLUB ASPINNALL SCALE 1:250

LEVEL 7 - Gallery Floor Plan A
 209 MACHINES - 8 Tables

DATE: January 2020
 SCALE 1:250

Christchurch Casinos Limited





Christchurch Casinos Limited

LEVEL 1 - Floor plan B

291 MACHINES, 29 TABLES

DATE January 2020

SCALE 1:250



Christchurch Casinos Limited

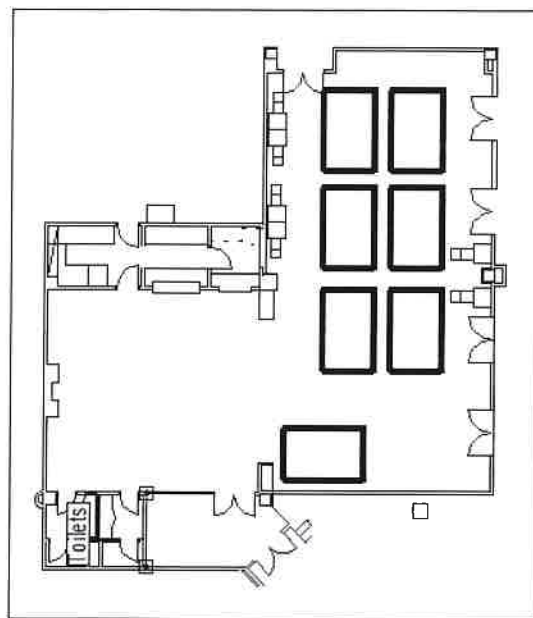
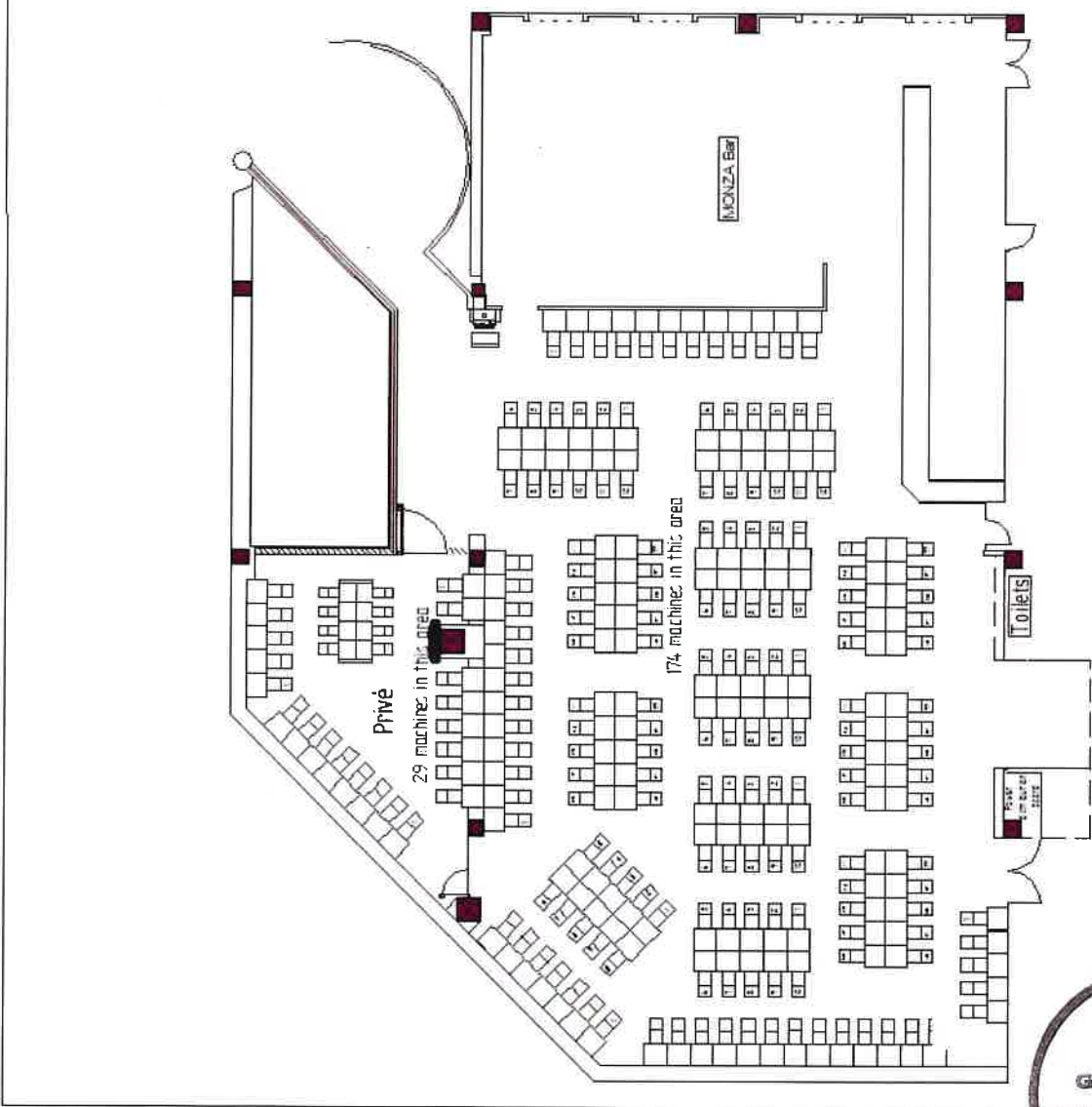
LEVEL 2 - Gallery Floor Plan B

209 MACHINES - 7 Tables

DATE:

January 2020

SCALE 1:250



INSET : CLUB ASPINALL

SCALE 1:250