

## CASINO CONTROL AUTHORITY

## CASINO PREMISES LICENCE

*Section 31, Casino Control Act 1990*

Name of holder of casino premises licence: Riverside Casino Limited

Address of holder of casino premises licence: Perry House, 360 Tristram Street, Hamilton

Address and description of casino premises: That part of the property situated at 346 Victoria Street, Hamilton, being more fully described in the first and second schedules to this licence.

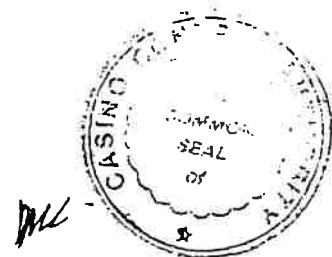
This licence authorises the use of the premises to which it relates as a casino for a period of 25 years commencing with the date on which the operation of the casino commences, and shall then expire, unless -

- (a) The holder of the licence sooner surrenders the licence under section 51 of the Casino Control Act 1990; or
- (b) The licence is sooner cancelled by the Casino Control Authority; or
- (c) The licence lapses under section 26 of the Casino Control Act 1990; or
- (d) The licence is renewed under section 34 of the Casino Control Act 1990.

*Conditions*

This licence is subject to -

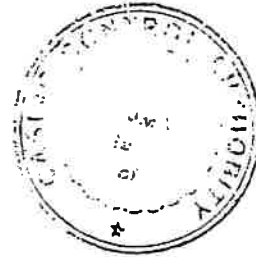
- (a) The conditions contained in the Act; and
- (b) The conditions set out in the third schedule to this licence; and
- (c) Any conditions imposed by regulations made under the Casino Control Act 1990; and
- (d) Any directions given by the Casino Control Authority pursuant to section 70 of the Casino Control Act 1990; and
- (e) Any further conditions attached to this licence by the Casino Control Authority pursuant to section 43 of the Casino Control Act 1990 on granting any approval




under section 42 of that Act.

Dated this 10th day of December 1999.

BY the direction of the  
Casino Control Authority the  
seal of the Casino Control  
Authority is hereunto affixed  
in the presence of:



  
\_\_\_\_\_  
PH Cooney  
Acting Chairperson

## FIRST SCHEDULE (Description of Casino Premises)

The unit titles listed below:

- |                                     |   |
|-------------------------------------|---|
| (a) Casino level (plan 5)           | PUE1 and AUE1, AUE2, AUE3, AUE5<br>and AUE6 |
| (b) Casino level (plan 6)           | PUF1 and AUF1 and AUF2                      |
| (c) Hotel/apartments level (plan 7) | PUG27                                       |

being part of the land contained in the following certificates of title:

- (a) Certificate of Title 25A/2 (South Auckland Registry), (1871 m<sup>2</sup>, being Lot 48B on DP 3073 and being part Allotment 48 Town of Hamilton West); and
- (b) Certificate of Title 63B/517 (South Auckland Registry), (3490 m<sup>2</sup>, being Lot 1 on DP S.58852),

the casino premises being outlined in red on the plans contained in the second schedule to this licence.



CK

h4

**SECOND SCHEDULE (Plans)***Handwritten signature*

(PLANS)

**PERRY**  
HOLDINGS LIMITED

- |    |                      |     |                       |
|----|----------------------|-----|-----------------------|
| 1  | Carport Service Room | 27  | Guest Services Office |
| 2  | Pool Changing        | 28  | Guest Services Office |
| 3  | Amphitheatre         | 29  | Guest Services Office |
| 4  | Amphitheatre         | 30  | Guest Services Office |
| 5  | Amphitheatre         | 31  | Guest Services Office |
| 6  | Amphitheatre         | 32  | Guest Services Office |
| 7  | Amphitheatre         | 33  | Guest Services Office |
| 8  | Amphitheatre         | 34  | Guest Services Office |
| 9  | Amphitheatre         | 35  | Guest Services Office |
| 10 | Amphitheatre         | 36  | Guest Services Office |
| 11 | Amphitheatre         | 37  | Guest Services Office |
| 12 | Amphitheatre         | 38  | Guest Services Office |
| 13 | Amphitheatre         | 39  | Guest Services Office |
| 14 | Amphitheatre         | 40  | Guest Services Office |
| 15 | Amphitheatre         | 41  | Guest Services Office |
| 16 | Amphitheatre         | 42  | Guest Services Office |
| 17 | Amphitheatre         | 43  | Guest Services Office |
| 18 | Amphitheatre         | 44  | Guest Services Office |
| 19 | Amphitheatre         | 45  | Guest Services Office |
| 20 | Amphitheatre         | 46  | Guest Services Office |
| 21 | Amphitheatre         | 47  | Guest Services Office |
| 22 | Amphitheatre         | 48  | Guest Services Office |
| 23 | Amphitheatre         | 49  | Guest Services Office |
| 24 | Amphitheatre         | 50  | Guest Services Office |
| 25 | Amphitheatre         | 51  | Guest Services Office |
| 26 | Amphitheatre         | 52  | Guest Services Office |
| 27 | Amphitheatre         | 53  | Guest Services Office |
| 28 | Amphitheatre         | 54  | Guest Services Office |
| 29 | Amphitheatre         | 55  | Guest Services Office |
| 30 | Amphitheatre         | 56  | Guest Services Office |
| 31 | Amphitheatre         | 57  | Guest Services Office |
| 32 | Amphitheatre         | 58  | Guest Services Office |
| 33 | Amphitheatre         | 59  | Guest Services Office |
| 34 | Amphitheatre         | 60  | Guest Services Office |
| 35 | Amphitheatre         | 61  | Guest Services Office |
| 36 | Amphitheatre         | 62  | Guest Services Office |
| 37 | Amphitheatre         | 63  | Guest Services Office |
| 38 | Amphitheatre         | 64  | Guest Services Office |
| 39 | Amphitheatre         | 65  | Guest Services Office |
| 40 | Amphitheatre         | 66  | Guest Services Office |
| 41 | Amphitheatre         | 67  | Guest Services Office |
| 42 | Amphitheatre         | 68  | Guest Services Office |
| 43 | Amphitheatre         | 69  | Guest Services Office |
| 44 | Amphitheatre         | 70  | Guest Services Office |
| 45 | Amphitheatre         | 71  | Guest Services Office |
| 46 | Amphitheatre         | 72  | Guest Services Office |
| 47 | Amphitheatre         | 73  | Guest Services Office |
| 48 | Amphitheatre         | 74  | Guest Services Office |
| 49 | Amphitheatre         | 75  | Guest Services Office |
| 50 | Amphitheatre         | 76  | Guest Services Office |
| 51 | Amphitheatre         | 77  | Guest Services Office |
| 52 | Amphitheatre         | 78  | Guest Services Office |
| 53 | Amphitheatre         | 79  | Guest Services Office |
| 54 | Amphitheatre         | 80  | Guest Services Office |
| 55 | Amphitheatre         | 81  | Guest Services Office |
| 56 | Amphitheatre         | 82  | Guest Services Office |
| 57 | Amphitheatre         | 83  | Guest Services Office |
| 58 | Amphitheatre         | 84  | Guest Services Office |
| 59 | Amphitheatre         | 85  | Guest Services Office |
| 60 | Amphitheatre         | 86  | Guest Services Office |
| 61 | Amphitheatre         | 87  | Guest Services Office |
| 62 | Amphitheatre         | 88  | Guest Services Office |
| 63 | Amphitheatre         | 89  | Guest Services Office |
| 64 | Amphitheatre         | 90  | Guest Services Office |
| 65 | Amphitheatre         | 91  | Guest Services Office |
| 66 | Amphitheatre         | 92  | Guest Services Office |
| 67 | Amphitheatre         | 93  | Guest Services Office |
| 68 | Amphitheatre         | 94  | Guest Services Office |
| 69 | Amphitheatre         | 95  | Guest Services Office |
| 70 | Amphitheatre         | 96  | Guest Services Office |
| 71 | Amphitheatre         | 97  | Guest Services Office |
| 72 | Amphitheatre         | 98  | Guest Services Office |
| 73 | Amphitheatre         | 99  | Guest Services Office |
| 74 | Amphitheatre         | 100 | Guest Services Office |

CARPARK - LEVEL B1

SCALE  
5 0 5 10

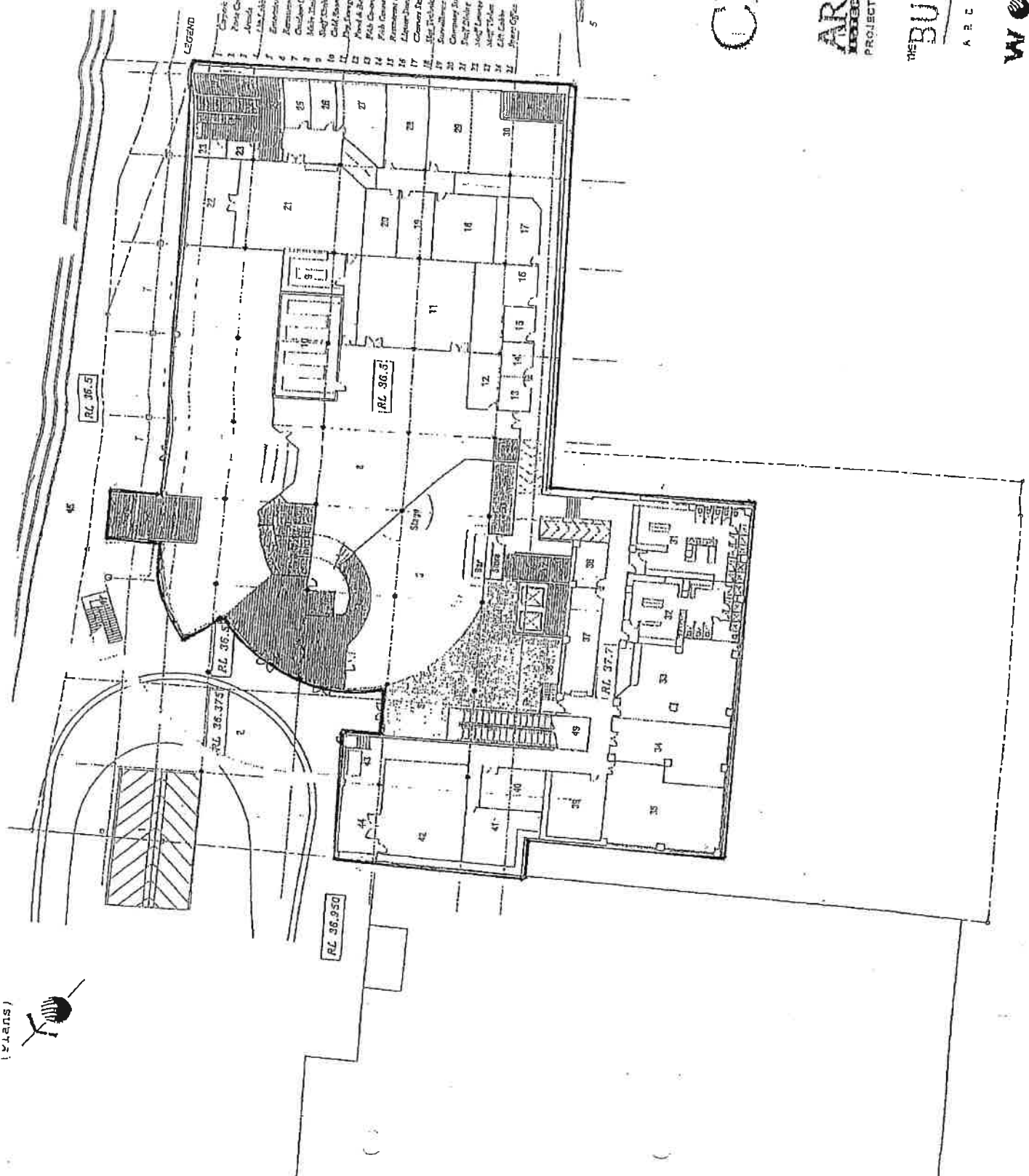
**RIVERSIDE CASINO**

**ARROW**  
PROJECT MANAGEMENT

CONTROL AUTHORITY  
THE COMMON  
CD05

**BUCHANAN**  
ARCHITECTS

**WORLEY**  
ARCHITECTS



- 21 Female Toilet
- 22 Male Toilet
- 23 Cashier
- 24 Coin Op
- 25 Coin Op
- 26 Coin Op
- 27 Coin Op
- 28 Coin Op
- 29 Coin Op
- 30 Coin Op
- 31 Coin Op
- 32 Coin Op
- 33 Coin Op
- 34 Coin Op
- 35 Coin Op
- 36 Coin Op
- 37 Coin Op
- 38 Coin Op
- 39 Coin Op
- 40 Coin Op
- 41 Coin Op
- 42 Coin Op
- 43 Coin Op
- 44 Coin Op
- 45 Coin Op
- 46 Coin Op
- 47 Coin Op
- 48 Coin Op
- 49 Coin Op
- 50 Coin Op
- 51 Coin Op
- 52 Coin Op
- 53 Coin Op
- 54 Coin Op
- 55 Coin Op
- 56 Coin Op
- 57 Coin Op
- 58 Coin Op
- 59 Coin Op
- 60 Coin Op
- 61 Coin Op
- 62 Coin Op
- 63 Coin Op
- 64 Coin Op
- 65 Coin Op
- 66 Coin Op
- 67 Coin Op
- 68 Coin Op
- 69 Coin Op
- 70 Coin Op
- 71 Coin Op
- 72 Coin Op
- 73 Coin Op
- 74 Coin Op
- 75 Coin Op
- 76 Coin Op
- 77 Coin Op
- 78 Coin Op
- 79 Coin Op
- 80 Coin Op
- 81 Coin Op
- 82 Coin Op
- 83 Coin Op
- 84 Coin Op
- 85 Coin Op
- 86 Coin Op
- 87 Coin Op
- 88 Coin Op
- 89 Coin Op
- 90 Coin Op
- 91 Coin Op
- 92 Coin Op
- 93 Coin Op
- 94 Coin Op
- 95 Coin Op
- 96 Coin Op
- 97 Coin Op
- 98 Coin Op
- 99 Coin Op
- 100 Coin Op

LEGEND

CASINO - LEVEL 1



**ARRAW**  
PROJECT MANAGEMENT

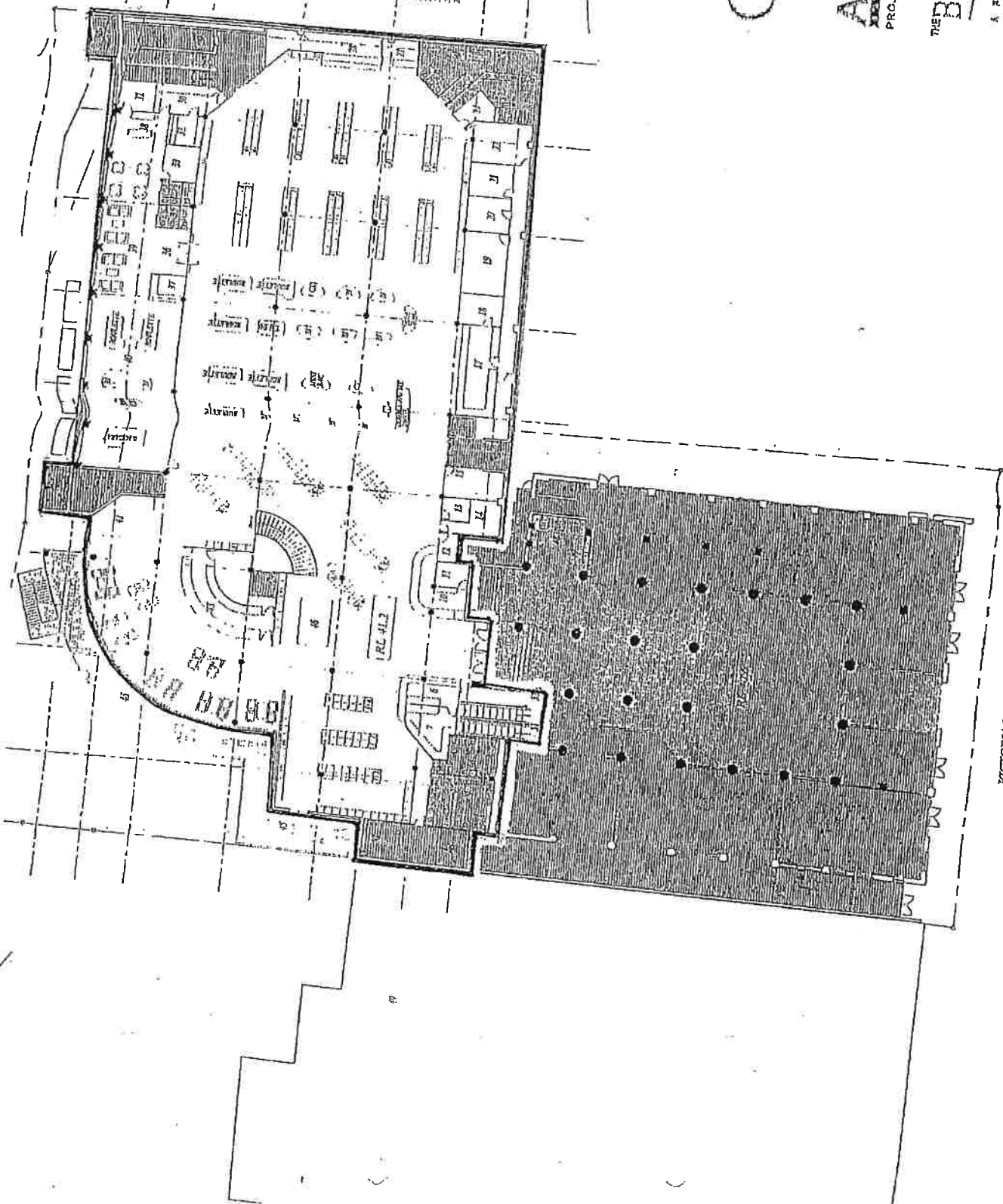


**THE BUCHANAN**  
ARCHITECTS

CD06

**WORLEY**  
ARCHITECTS

VICTORIA STREET



- LEGEND
- 01 Stairway
  - 02 Staircase
  - 03 Corridor
  - 04 Corridor
  - 05 Corridor
  - 06 Corridor
  - 07 Corridor
  - 08 Corridor
  - 09 Corridor
  - 10 Corridor
  - 11 Corridor
  - 12 Corridor
  - 13 Corridor
  - 14 Corridor
  - 15 Corridor
  - 16 Corridor
  - 17 Corridor
  - 18 Corridor
  - 19 Corridor
  - 20 Corridor
  - 21 Corridor
  - 22 Corridor
  - 23 Corridor
  - 24 Corridor
  - 25 Corridor
  - 26 Corridor
  - 27 Corridor
  - 28 Corridor
  - 29 Corridor
  - 30 Corridor
  - 31 Corridor

APARTMENTS - LEVEL 2



RIVERSIDE  
CASINO

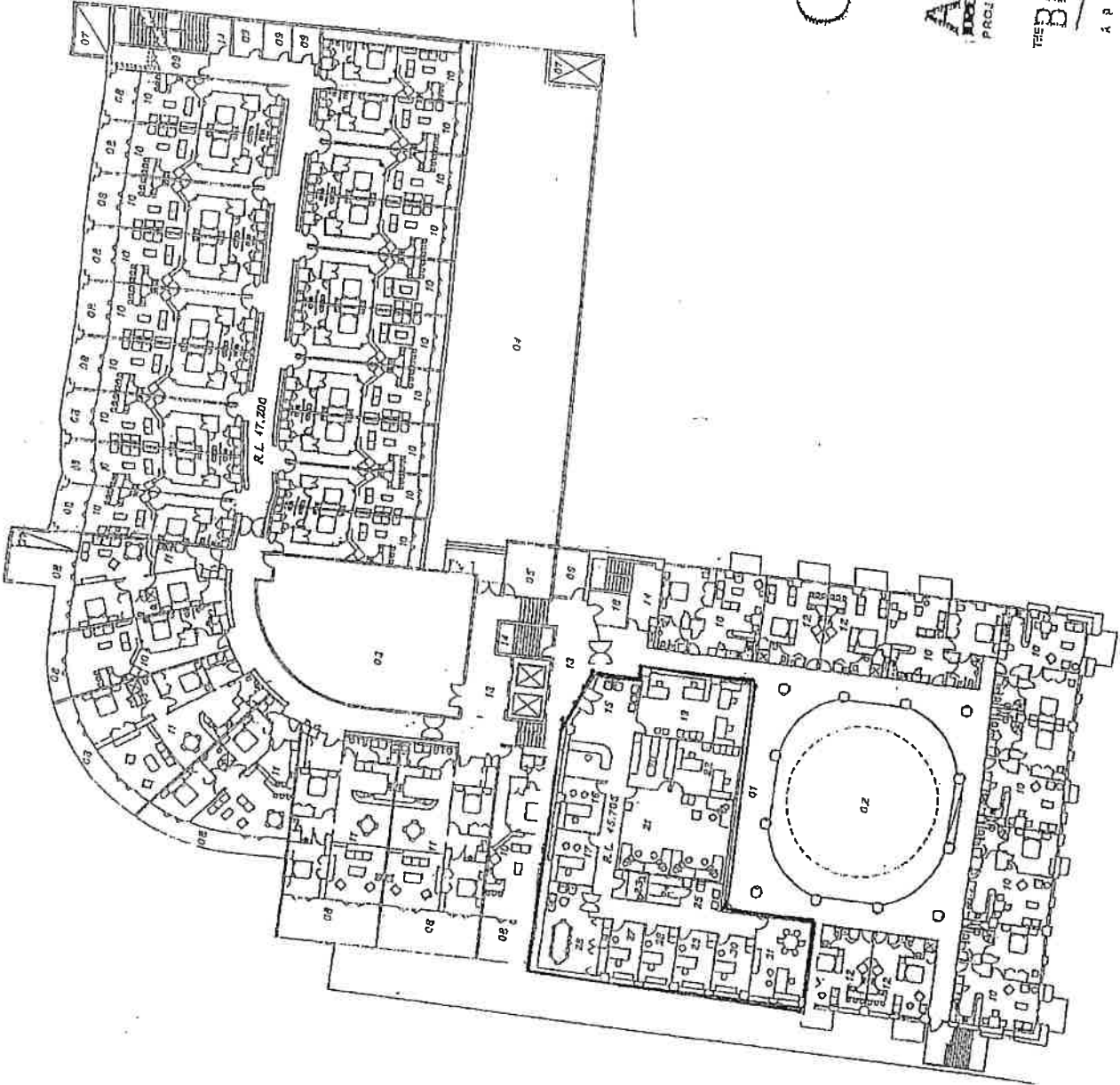
**ARROW**  
PROJECT MANAGEMENT



CD07

THE BUCHANAN  
ARCHITECTS

**WORLDVIEW**



**CASINO VENUE LICENCE:  
THIRD SCHEDULE OF LICENCE ISSUED TO  
RIVERSIDE CASINO LIMITED, 10 DECEMBER 1999**

**Preamble**

1. The following conditions apply to the Casino Venue.
2. The Licence Holder must comply with these conditions. Failure to do so could result in the suspension or cancellation of this Licence.

**Interpretation**

3. Words and expressions in these conditions shall have the same meaning as defined in the Gambling Act 2003.
4. In these conditions:

**Act** means the Gambling Act 2003.

**Authority** means the Casino Control Authority.

**Casino Agreement** means the Management Agreement between the Licence Holder and SKYCITY Casino Management Limited and others entered into on or about 2 September 2002, as varied with the approval of the Authority, or which may be varied or substituted with the approval of the Commission from time to time.

**Casino Venue** means that part of the property situated at 346 Victoria Street, Hamilton, as more fully described in the First and Second Schedules to this Licence.

**Commission** means the Gambling Commission.

**Executive Director** means the Executive Director of the Commission.

**Gambling Area** means that part of the Casino Venue specified in condition 9 where casino gambling is permitted by the Commission.

**Inspectorate** means the Casino Compliance Unit of the Department of Internal Affairs.

**Licence Holder** means Riverside Casino Limited.

**Secretary** means the Secretary for Internal Affairs.

**Surveillance Standard** means the Surveillance Policy describing the required standard, type, operation and installation of surveillance facilities, approved by the Authority with



effect from 5 December 2003, as may be substituted or amended by the Commission from time to time.

**Trust** means the Trust set up under the Deed of Charitable Trust concluded in 2003 settled by Riverside Casino Limited, as may be varied with the approval of the Commission.

### **Design and Construction**

5. The Licence Holder shall lodge and maintain with the Commission and the Secretary updated as built architectural floor plans of Levels B1 and 1 of the Casino Venue showing walls, structures and dimensions. Updated as built architectural floor plans shall be lodged with the Commission and the Secretary if the Licence Holder makes alterations to Levels B1 and 1 of the Casino Venue requiring building consent from a territorial authority.
6. The Licence Holder must obtain the approval of the Commission prior to:
  - (a) construction or design changes to Levels B1 and 1 of the Casino Venue, including the Gambling Area;
  - (b) the construction or relocation outside the Gambling Area and within the Casino Venue of bank facilities available to the public excluding ATMs, EFTPOS and like devices;
  - (c) the addition or alteration of signage relating to the casino business on the exterior of the Casino Venue or on or around the building within which it is located.

The process by which the Licence Holder may obtain approval for construction or design changes to Levels B1 and 1 of the Casino Venue (6(a) above) is set out in condition 7. The Commission will determine any application for approval under 6(b). The Executive Director may approve the addition or alteration of signage relating to the casino business on the exterior of the Casino Venue or on or around the building within which it is located (paragraph (c) above) if he/she is satisfied the proposed changes will have no potentially adverse effects. If he/she is not so satisfied, the proposed changes must be referred to the Commission for a decision on approval.

7. The Licence Holder must notify the Executive Director of any proposed changes to the construction or design of Levels B1 and 1 of the Casino Venue. Notification must be accompanied by relevant drawings and an assessment of any impacts the alterations may have on:

- (a) the integrity and fairness of games;
- (b) the effectiveness of security and surveillance;
- (c) harm prevention, harm minimisation and responsible gambling;
- (d) potential access to the Gambling Area by persons under 20 years of age; and
- (e) compliance by any person with the Act, including section 11.

The Executive Director may approve the proposed changes to the construction or design if he or she is satisfied that there are no adverse impacts in relation to the matters specified in (a)-(e) above. If the Executive Director is not satisfied, he or she will refer the proposal to the Commission for determination.

8. The Licence Holder shall ensure that:

- (a) gambling activity is not visible from outside the Casino Venue, except where and to the extent that the Commission may approve otherwise; and
- (b) there is provision for generation of emergency power to maintain in situations of an interruption to mains power:
  - (i) minimum services to the Gambling Area; and
  - (ii) lighting in highly sensitive areas such as count rooms, surveillance suite, cashiering locations and gambling equipment storerooms.

### **Gambling Area**

- 9. The current standard Gambling Area for the Casino Venue is delineated in the plan attached as Schedule 1 to these conditions. An additional Gambling Area for level B1 of the casino is delineated in the plan attached as Schedule 2 and will form part of the Gambling Area only after being activated as provided in condition 9A.
- 9A The additional Gambling Area depicted in the plan attached as Schedule 2 will take effect subject to the Licence Holder providing the Commission and the Inspectorate a minimum of 10 working days notice in writing of its intention to adopt the additional Gambling Area.

### **General specifications for the count room facility**

- 10. The Licence Holder shall ensure that the count room is located in a secure area and shall, as a minimum requirement, provide the following:
  - (a) effective electronic surveillance in accordance with the Surveillance Standard;

- (b) an alarm device connected to the entrance of the count room which signals to the security/surveillance department whenever the door is opened;
- (c) a telephone link;
- (d) a count table constructed of transparent material with clear visibility through to the floor;
- (e) an area within, or with access from, the count room to house an enclosed cabinet or trolley(s) with a separately keyed double locking system for the storage of drop boxes; and
- (f) a coin storage area with a double lock system with access from the count room while still inside the secured area.

**General specifications for cage/chip bank facilities**

11. The Licence Holder shall ensure that the cashier's cage is located immediately adjacent to the gaming floor and is clearly visible to patrons. Unless otherwise approved by the Commission, the cage area shall, as a minimum requirement, include the following:
  - (a) accommodation for chip bank cashiers and general cashiers (which shall be physically separate unless the Commission approves otherwise);
  - (b) storage facilities for cage inventory;
  - (c) a separate locked compartment for storage of chips and plaques held in reserve and not used for active gaming;
  - (d) manually triggered and automatic silent alarm systems connected directly to monitor rooms of the security and surveillance departments; and
  - (e) an interconnect door entry and exit system (man trap) which will not permit a person to pass through the second door until the first door is securely locked.
12. The approval of the Commission is required for the construction and relocation of cashiering facilities in other parts of the Gambling Area to service dedicated areas or rooms. Any such additional facilities must comply with the surveillance equipment requirements set out in the Surveillance Standard and be fitted with manually triggered and automatic silent alarm systems connected to the surveillance department.

### **General specifications for Inspectors/Police facilities**

13. The Licence Holder shall provide facilities within the Casino Venue for the use of Gambling Inspectors and the Police as directed by the Commission. Before issuing any such direction, the Commission shall consult with the Licence Holder and the Department of Internal Affairs and/or the New Zealand Police (as applicable) and invite submissions from each party in relation to any proposal.

### **Independent Charitable Trust**

14. The Licence Holder shall financially support the Independent Charitable Trust established by the Deed of Trust. The Licence Holder shall pay to the Trust, in respect of each full year of casino operations, not less than 1.5% of the revenue from the operation of the Casino (GST exclusive) before gaming tax. The Licence Holder is required to provide annually to the Commission an audited statement certifying the amount constituting 1.5% of the revenue from the operation of the Casino before gaming tax, and confirming that payment by the Licence Holder to the Trust has been made in accordance with this condition.
15. The Licence Holder is required to ask the Trust on an annual basis to provide a list of persons granted funding for the previous year and in what amount, and a list of unsuccessful applicants for funding. The Licence Holder is required to publish annually the amount paid to the Trust, and the information provided to it by the Trust relating to the allocation of funds, as specified in this condition.

### **Community Liaison Group**

16. The Licence Holder will meet the reasonably incurred costs (or such share thereof as the Commission considers appropriate) of the Hamilton Community Liaison Group established under licence conditions by the Authority. The convenor of the Group shall be appointed by the Commission. The membership of the Group shall be determined by the convenor, it being expected that representatives will be sought from the Hamilton City Council, non-governmental welfare agencies operating in Hamilton, Hamilton churches, Hamilton police, Hamilton Chamber of Commerce, Ministry of Social Development (Hamilton), Tainui, and problem gambling treatment providers. The function of the Group is, where requested, to represent community views in the course of consultation and liaison activities undertaken by the Licence Holder, the Commission, the Secretary, and other entities, as the case may be, relating to gambling at the casino. The Group may participate in such consultation and liaison activities to the extent it considers necessary to represent community views and may undertake its own consultations and enquiries for that purpose.

### **Notification requirements**

17. The Licence Holder shall notify the Commission and the Secretary in writing as soon as possible of any change in the state of affairs of the Licence Holder which has a significant bearing on the holding of the Casino Venue licence, including any person ceasing to be an associated person of the Licence Holder.
18. The Licence Holder, immediately on becoming aware of such an occurrence, shall notify the Commission and Secretary in writing if the Licence Holder or an associated person of the Licence Holder is involved in any:
  - (a) conviction for an offence involving dishonesty;
  - (b) censure or disciplinary action by a professional body for ethical misconduct;
  - (c) censure in any way in relation to a casino in another jurisdiction;
  - (d) current investigation (other than routine or periodical inspections) by any governmental or statutory body; and
  - (e) bankruptcy, receivership or liquidation.

### **Casino Agreement**

19. The Licence Holder shall not permit any person to operate the Casino otherwise than in accordance with the terms of the Casino Agreement.

### **Audit**

20. The Commission may at any time request access to the Licence Holder's internal audit information or institute an audit of the Licence Holder's Casino business.
21. The Licence Holder shall submit for the approval of the Commission the name of the person or body of persons appointed from time to time by the Licence Holder as Auditor to audit the Casino business. The approval of the Commission shall be revocable in the discretion of the Commission and shall be subject to such conditions as the Commission from time to time imposes.

### **Bank accounts**

22. The Licence Holder, its parent company, or any subsidiaries of the Licence Holder or parent company, shall not open any bank account overseas to facilitate, or in connection with, the operation of the Casino without the approval of the Commission.

**Provision of information**

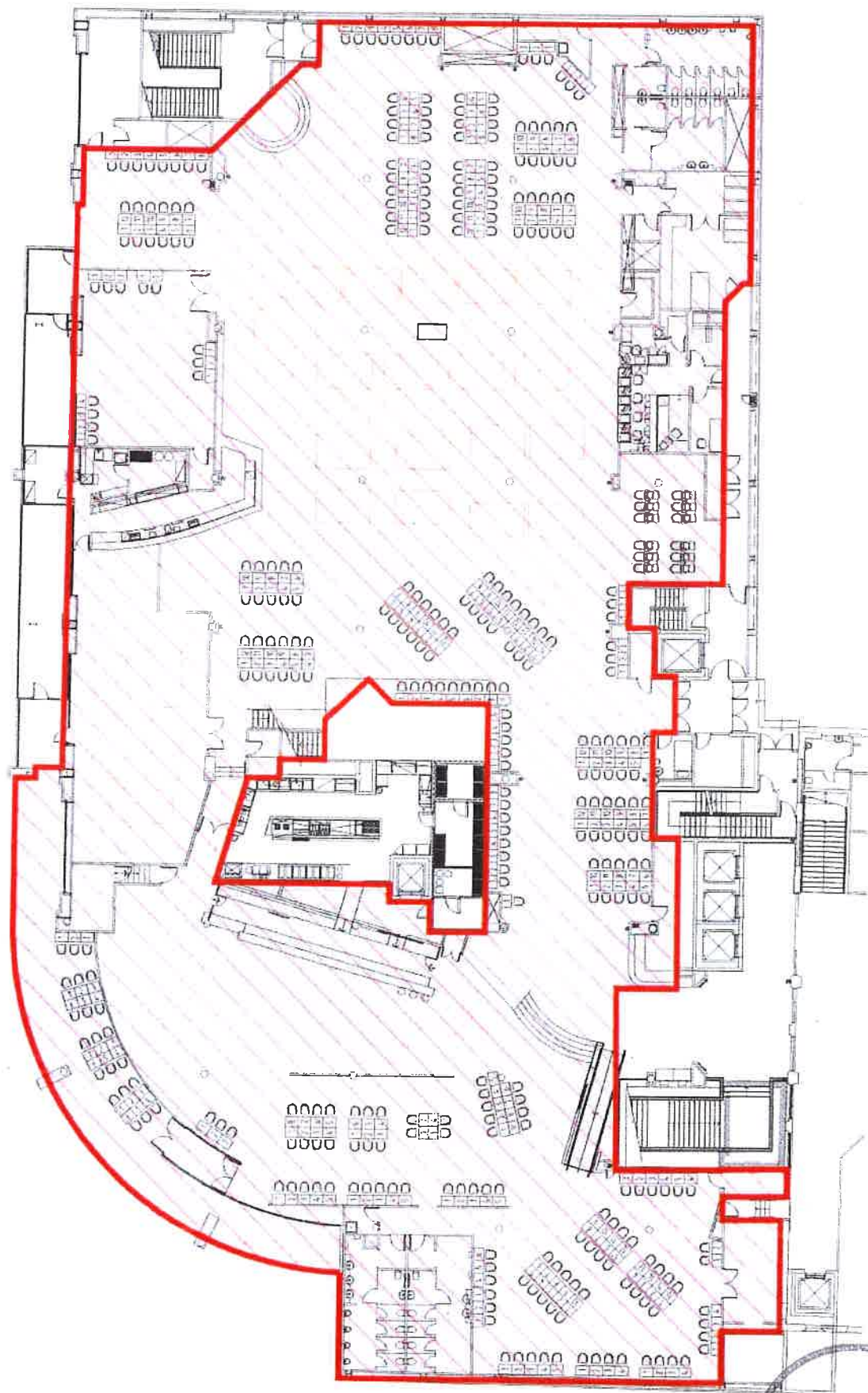
23. The Licence Holder shall, within such period as the Commission may require, provide to the Commission, or to any person authorised by the Commission to receive the same, such reports or other information as may be specified by the Commission relating to:
- (a) the operations of the Licence Holder or any entity or person associated with the Licence Holder;
  - (b) the operation of the Casino; or
  - (c) any associated person of the Licence Holder, being information in the possession of the Licence Holder, as may be specified by the Commission in writing from time to time, within such period as the Commission may require.
24. The Licence Holder shall allow the Commission or staff of the Commission Secretariat, or any other person authorised by the Commission, to enter and remain in any part of the Casino Venue at any time for the purpose of his or her official duties under the Act.

**Address for service**

25. The Licence Holder shall file with the Commission an address in New Zealand for the service of notices upon it.
26. The Licence Holder may, by notice given to the Commission, change its address for the service of notices.

**Consolidated to 8 June 2018**

SCHEDULE 1





# Schedule 2

BUCHANAN

PROPOSED LOWER GROUND  
FLOOR "RED LINE" AREA  
OPTION 4

SKYCITY HAMILTON  
200, 201, 202, 203, 204, 205, 206, 207, 208, 209, 210, 211, 212, 213, 214, 215, 216, 217, 218, 219, 220, 221, 222, 223, 224, 225, 226, 227, 228, 229, 230, 231, 232, 233, 234, 235, 236, 237, 238, 239, 240, 241, 242, 243, 244, 245, 246, 247, 248, 249, 250, 251, 252, 253, 254, 255, 256, 257, 258, 259, 260, 261, 262, 263, 264, 265, 266, 267, 268, 269, 270, 271, 272, 273, 274, 275, 276, 277, 278, 279, 280, 281, 282, 283, 284, 285, 286, 287, 288, 289, 290, 291, 292, 293, 294, 295, 296, 297, 298, 299, 300, 301, 302, 303, 304, 305, 306, 307, 308, 309, 310, 311, 312, 313, 314, 315, 316, 317, 318, 319, 320, 321, 322, 323, 324, 325, 326, 327, 328, 329, 330, 331, 332, 333, 334, 335, 336, 337, 338, 339, 340, 341, 342, 343, 344, 345, 346, 347, 348, 349, 350, 351, 352, 353, 354, 355, 356, 357, 358, 359, 360, 361, 362, 363, 364, 365, 366, 367, 368, 369, 370, 371, 372, 373, 374, 375, 376, 377, 378, 379, 380, 381, 382, 383, 384, 385, 386, 387, 388, 389, 390, 391, 392, 393, 394, 395, 396, 397, 398, 399, 400, 401, 402, 403, 404, 405, 406, 407, 408, 409, 410, 411, 412, 413, 414, 415, 416, 417, 418, 419, 420, 421, 422, 423, 424, 425, 426, 427, 428, 429, 430, 431, 432, 433, 434, 435, 436, 437, 438, 439, 440, 441, 442, 443, 444, 445, 446, 447, 448, 449, 450, 451, 452, 453, 454, 455, 456, 457, 458, 459, 460, 461, 462, 463, 464, 465, 466, 467, 468, 469, 470, 471, 472, 473, 474, 475, 476, 477, 478, 479, 480, 481, 482, 483, 484, 485, 486, 487, 488, 489, 490, 491, 492, 493, 494, 495, 496, 497, 498, 499, 500, 501, 502, 503, 504, 505, 506, 507, 508, 509, 510, 511, 512, 513, 514, 515, 516, 517, 518, 519, 520, 521, 522, 523, 524, 525, 526, 527, 528, 529, 530, 531, 532, 533, 534, 535, 536, 537, 538, 539, 540, 541, 542, 543, 544, 545, 546, 547, 548, 549, 550, 551, 552, 553, 554, 555, 556, 557, 558, 559, 560, 561, 562, 563, 564, 565, 566, 567, 568, 569, 570, 571, 572, 573, 574, 575, 576, 577, 578, 579, 580, 581, 582, 583, 584, 585, 586, 587, 588, 589, 590, 591, 592, 593, 594, 595, 596, 597, 598, 599, 600, 601, 602, 603, 604, 605, 606, 607, 608, 609, 610, 611, 612, 613, 614, 615, 616, 617, 618, 619, 620, 621, 622, 623, 624, 625, 626, 627, 628, 629, 630, 631, 632, 633, 634, 635, 636, 637, 638, 639, 640, 641, 642, 643, 644, 645, 646, 647, 648, 649, 650, 651, 652, 653, 654, 655, 656, 657, 658, 659, 660, 661, 662, 663, 664, 665, 666, 667, 668, 669, 670, 671, 672, 673, 674, 675, 676, 677, 678, 679, 680, 681, 682, 683, 684, 685, 686, 687, 688, 689, 690, 691, 692, 693, 694, 695, 696, 697, 698, 699, 700, 701, 702, 703, 704, 705, 706, 707, 708, 709, 710, 711, 712, 713, 714, 715, 716, 717, 718, 719, 720, 721, 722, 723, 724, 725, 726, 727, 728, 729, 730, 731, 732, 733, 734, 735, 736, 737, 738, 739, 740, 741, 742, 743, 744, 745, 746, 747, 748, 749, 750, 751, 752, 753, 754, 755, 756, 757, 758, 759, 760, 761, 762, 763, 764, 765, 766, 767, 768, 769, 770, 771, 772, 773, 774, 775, 776, 777, 778, 779, 780, 781, 782, 783, 784, 785, 786, 787, 788, 789, 790, 791, 792, 793, 794, 795, 796, 797, 798, 799, 800, 801, 802, 803, 804, 805, 806, 807, 808, 809, 810, 811, 812, 813, 814, 815, 816, 817, 818, 819, 820, 821, 822, 823, 824, 825, 826, 827, 828, 829, 830, 831, 832, 833, 834, 835, 836, 837, 838, 839, 840, 841, 842, 843, 844, 845, 846, 847, 848, 849, 850, 851, 852, 853, 854, 855, 856, 857, 858, 859, 860, 861, 862, 863, 864, 865, 866, 867, 868, 869, 870, 871, 872, 873, 874, 875, 876, 877, 878, 879, 880, 881, 882, 883, 884, 885, 886, 887, 888, 889, 890, 891, 892, 893, 894, 895, 896, 897, 898, 899, 900, 901, 902, 903, 904, 905, 906, 907, 908, 909, 910, 911, 912, 913, 914, 915, 916, 917, 918, 919, 920, 921, 922, 923, 924, 925, 926, 927, 928, 929, 930, 931, 932, 933, 934, 935, 936, 937, 938, 939, 940, 941, 942, 943, 944, 945, 946, 947, 948, 949, 950, 951, 952, 953, 954, 955, 956, 957, 958, 959, 960, 961, 962, 963, 964, 965, 966, 967, 968, 969, 970, 971, 972, 973, 974, 975, 976, 977, 978, 979, 980, 981, 982, 983, 984, 985, 986, 987, 988, 989, 990, 991, 992, 993, 994, 995, 996, 997, 998, 999, 1000

SKYCITY  
HAMILTON

