

IN THE MATTER of the Gambling Act 2003

AND on an application by **SKYCITY CASINO MANAGEMENT LIMITED** and **SKYCITY AUCKLAND LIMITED** for approval to remove two cashiering facilities, and to construct one new cashiering facility

BEFORE THE GAMBLING COMMISSION

Members: P Chin (Chief Gambling Commissioner)
M M Lythe
P J Stanley
G L Reeves

Date of Application: 12 May 2010

Date of Decision: 18 June 2010

Date of Notification
of Decision: 24 June 2010

DECISION ON AN APPLICATION BY SKYCITY CASINO MANAGEMENT LIMITED AND SKYCITY AUCKLAND LIMITED FOR APPROVAL TO REMOVE TWO CASHIERING FACILITIES, AND TO CONSTRUCT ONE NEW CASHIERING FACILITY

Introduction

1. SKYCITY Casino Management Limited ("**SCML**") and SKYCITY Auckland Limited ("**SCAL**") (together referred to as the "**Applicants**") applied to the Commission to remove two cashiering facilities from the level 2 Gambling Area and to construct one new facility in their place.
2. The relevant licence conditions are as follows:

SCAL venue licence

6. The Licence Holder must obtain the approval of the Commission prior to:
 - (a) construction or design changes to Levels 2 or 3, including the Gambling Area but excluding the SKYCITY Theatre and foyer area, restaurant and bar areas outside the Gambling Area, and the back of house areas used by staff (unless construction or design changes to any of these excluded areas may impact on matters set out in condition 7 in which case prior approval must be sought);
 - (b) the construction or relocation outside the Gambling Area and within the Casino Venue of bank facilities available to the public excluding ATMs, EFTPOS and like devices;
 - (c) the addition or alteration of signage relating to the casino business on the exterior of the Casino Venue.

The process by which the Licence Holder may obtain approval for construction or design changes to Levels 2 or 3, including the Gambling Area (paragraph (a) above) is set out in condition 7. The Commission will determine any application for approval under 6(b) and (c).

7. The Licence Holder must notify the Executive Director of any proposed changes to the construction or design of Levels 2 or 3, including the Gambling Area but excluding SKYCITY Theatre and foyer area, restaurant and bar areas outside the Gambling Area, and the back of house areas used by staff. Notification must be accompanied by relevant drawings and an assessment of any impacts the alterations may have on:
- (a) the integrity and fairness of games;
 - (b) the effectiveness of security and surveillance;
 - (c) harm prevention, harm minimisation and responsible gambling;
 - (d) potential access to the Gambling Area by persons under 20 years of age; and
 - (e) compliance by any person with the Act, including section 11.

The Executive Director may approve the proposed changes to the construction or design if he or she is satisfied that there are no adverse impacts in relation to the matters specified in (a)-(e) above. If the Executive Director is not satisfied, he or she will refer the proposal to the Commission for determination.

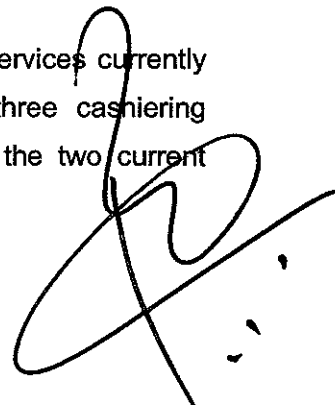
13. The approval of the Commission is required for the construction and relocation of cashiering facilities additional to the principal facility in other parts of the Gambling Area or casino venue. Any such additional facilities must comply with the surveillance equipment requirements set out in the Surveillance Standard and be fitted with manually triggered and automatic silent alarm systems connected to the surveillance department.

SCML operator's licence (Auckland casino)

22. The approval of the Commission is required for the construction and relocation of cashiering facilities additional to the principal facility in other parts of the Gambling Area or casino venue. Any such additional facilities must comply with the surveillance equipment requirements set out in the Surveillance Standard and be fitted with manually triggered and automatic silent alarm systems connected to the surveillance department.

Submissions by the Applicants

3. The Applicants submitted, in summary, as follows:
- (a) They currently have three cashiering facilities within the level 2 Gambling Area, a principal facility and two smaller facilities on the western and southern sides of the area.
 - (b) They want to remove the western and southern cashiering facilities and construct a new facility in a location approximately midway between these two facilities.
 - (c) The proposed new facility would provide the same cashiering services currently offered at the existing facilities, but would do so through three cashiering positions, rather than the six combined positions available at the two current facilities.



- (d) The new facility would comply with the Surveillance Standard, and be fitted with manually triggered and automatic alarm systems connected to the Surveillance Department.
- (e) The space created by the removal of the existing facilities would be used to locate gaming machines from other parts of the casino. They will seek approval for new floor plans showing the positions of the gaming machines following the Commission's determination of this application.
- (f) The Commission previously granted approval for them to operate 22 cash-dispensing EFTPOS terminals within the Gambling Area, although it currently only operates 17 terminals. Six of those terminals are located in the western and southern cashiering facilities.
- (g) They will operate three cash dispensing EFTPOS terminals in the new facility, and with the removal of the two current facilities, the overall number of cash dispensing EFTPOS terminals in the Gambling Area will reduce from 17 to 14 – well within the approved maximum.
- (h) The design changes to the floor to accommodate the removal of the existing cashiering facilities and the construction of a new facility in their place have no impact on the matters set out in condition 7 of SCAL's venue licence.

The Secretary's submissions

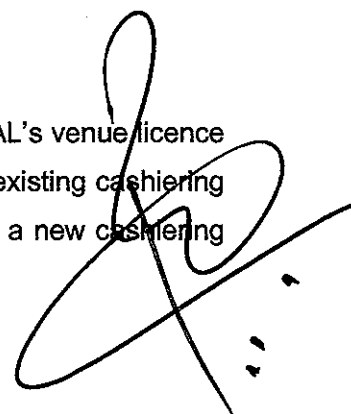
- 4. The Secretary had no regulatory concerns with the proposal.

Analysis

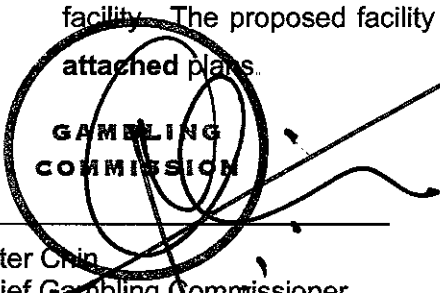
- 5. SKYCITY wants to remove the cashiering facilities at the western and southern ends of the main floor of the Auckland casino, and to construct one new cashiering facility in its place.
- 6. This application raised no issues of regulatory concern; did not impact on any of the matters set out in condition 7 of SCAL's venue licence; and the number of cash-dispensing EFTPOS terminals within the Gambling Area will be well within the approved maximum.

Decision of the Commission

- 7. The Commission decided to approve, under conditions 6 and 13 of SCAL's venue licence and condition 22 of SCML's operator's licence, the removal of the two existing cashiering facilities located on level 2 at the Auckland casino, and the creation of a new cashiering

A large, stylized handwritten signature in black ink, consisting of several loops and a long horizontal stroke extending to the right.

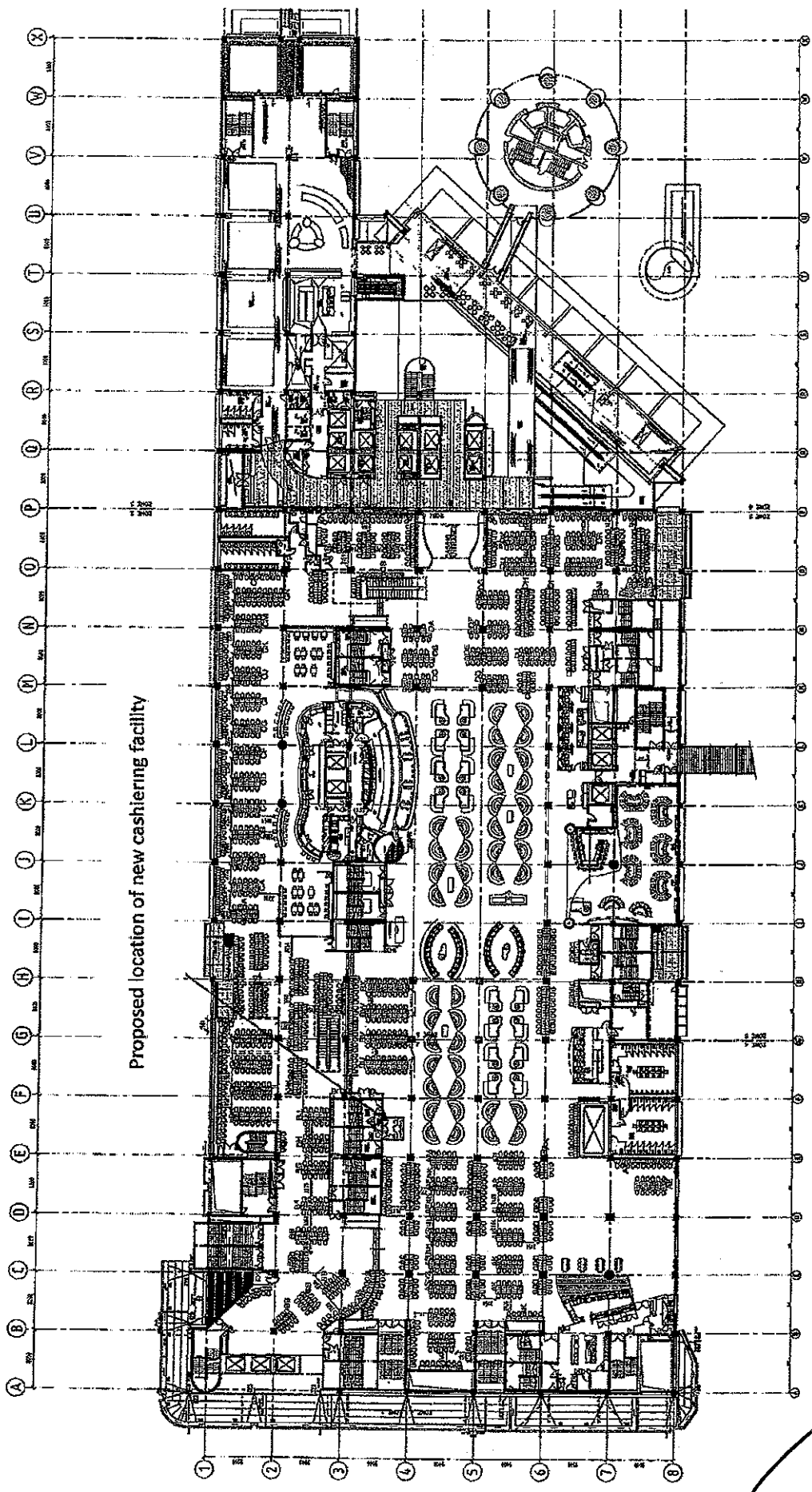
facility. The proposed facility should be located and constructed in accordance with the attached plans.



Peter Chin
Chief Gambling Commissioner

for and on behalf of the
Gambling Commission

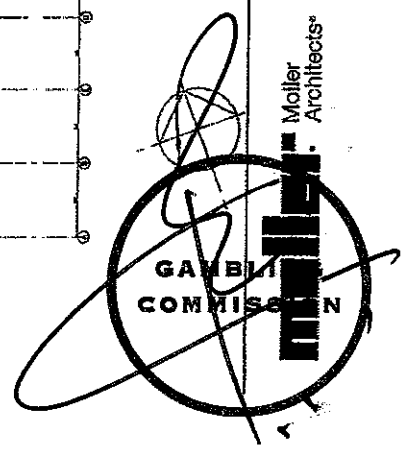
24 June 2010

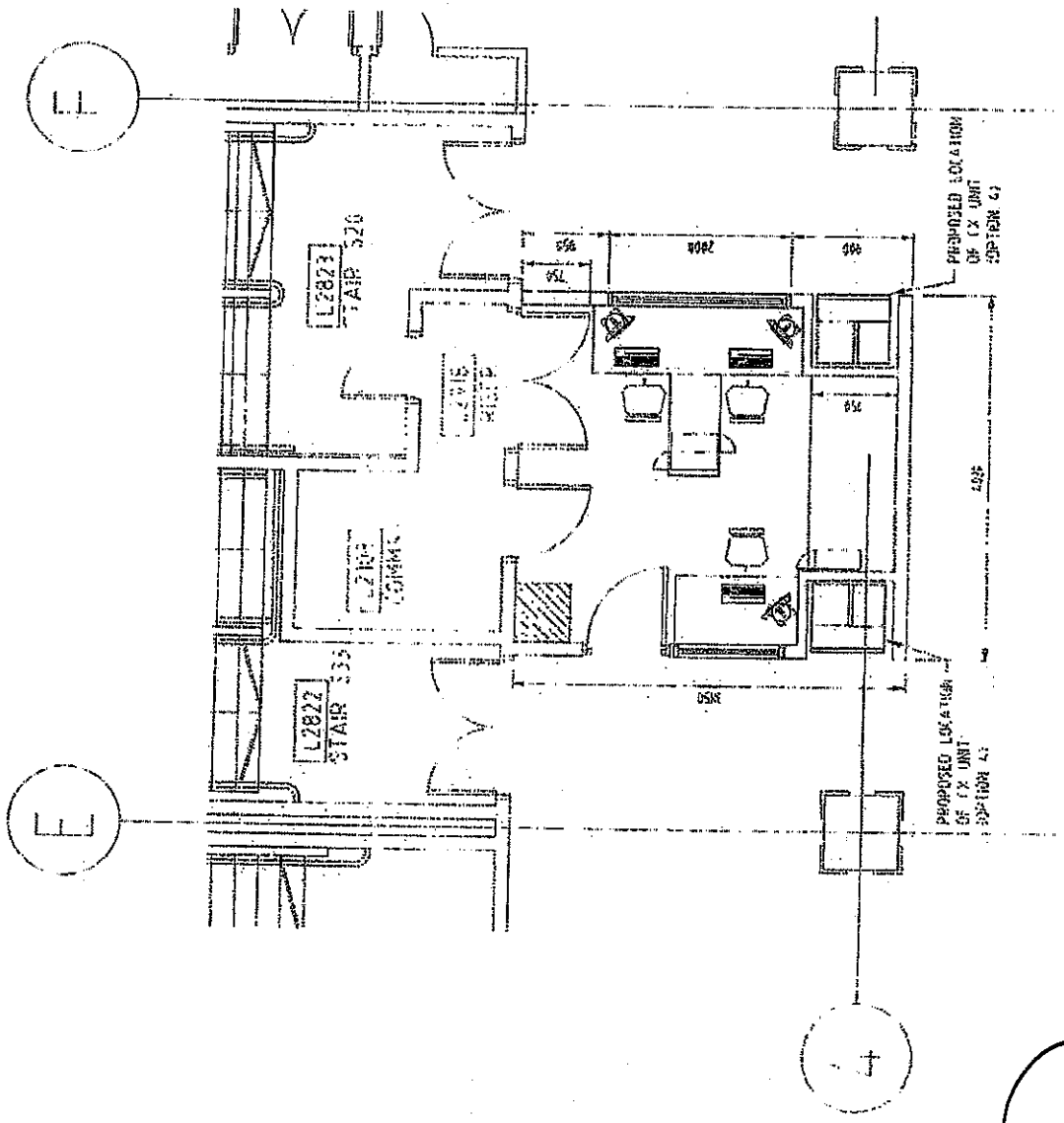


Proposed location of new cashiering facility

SCHEMATIC DEVELOPMENT
 DATE: 12/15/11
 DRAWN BY: [Name]
 CHECKED BY: [Name]
 PROJECT: SKYCITY
 SHEET: 5:132C

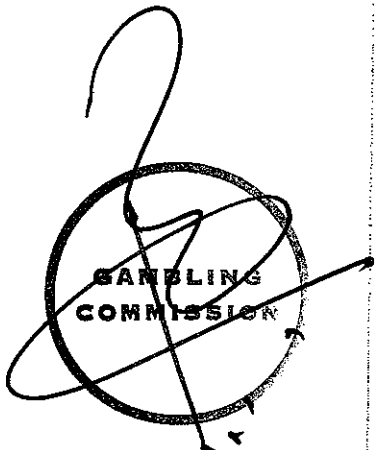
<p>Moller Architects 1111 15th Street, Suite 1000 Las Vegas, NV 89101 Phone: 702.735.1111 Fax: 702.735.1112 www.mollerarchitects.com</p>	<p>SKYCITY ENTERTAINMENT GROUP</p>	<p>SKY CITY ENTERTAINMENT GROUP GAMING LAYOUT</p>	<p>DATE: 12/15/11 DRAWN BY: [Name] CHECKED BY: [Name] PROJECT: SKYCITY SHEET: 5:132C</p>	<p>1202 (M)</p>	<p>14'</p>





PROPOSED LOCATION
OF CX UNIT
EQUIPMENT 41

PROPOSED LOCATION
OF CX UNIT
EQUIPMENT 42



E

E

+