

IN THE MATTER of the Gambling Act 2003
AND of an application by
**CHRISTCHURCH
CASINOS LIMITED** for
approval of floor plans

BEFORE THE GAMBLING COMMISSION

Members: P Chin (Chief Gambling Commissioner)
M M Lythe
P J Stanley
G L Reeves

Date of Application: 4 April 2008

Date of Decision: 15 May 2008

Date of Notification of Decision: 28 May 2008

DECISION

**ON AN APPLICATION BY CHRISTCHURCH CASINOS LIMITED
FOR APPROVAL OF FLOOR PLANS**

Application

- 1 Christchurch Casinos Limited ("CCL") applied to the Gambling Commission (the "Commission"), under condition 1 of its venue licence, for approval:
 - (a) of new permanent floor plans for Levels 3 and 4;
 - (b) of a temporary floor plan for Level 3; and
 - (c) to remove approved floor plan "C" and the temporary floor plan, once it is fully reliant on the new permanent floor plans

Licence conditions

- 2 Condition 1 of CCL's venue licence (as amended by the Commission by decision GC06/04) provides as follows:

Casino premises to be designed, developed, constructed, fitted out and commissioned for operation in accordance with application

The casino premises shall be designed, developed, constructed, fitted out and commissioned for operation generally in accordance with the application of the



licence holder or with such changes as may from time to time be approved by the Commission, provided however that nothing in this condition shall apply in respect of any matter specified in the second schedule to the Casino Control Act 1990 (the "Act")

Submissions by CCL

3 CCL stated that:

- (a) it wants to refit and refurbish the Gambling Areas on Levels 3 and 4 of the Christchurch casino, and re-orient a small number of gaming tables and machines. It seeks approval of new permanent floor plans depicting the following changes:

Level 4

- (i) replace the existing bar area with a new bar with kitchen and dining facilities;
- (ii) reposition fire exit doors adjacent to the new bar;
- (iii) reposition the cashier's booth from the entrance of the Level 4 Gambling Area to the opposite side of the floor;
- (iv) reconfigure some gaming machines and relocate 16 machines to Level 3

Level 3

- (i) reconfigure seven gaming tables into a pod of three and a pod of four;
 - (ii) relocate 10 gaming machines from the main gaming machine area to the Diamond Bar;
 - (iii) deploy 16 gaming machines from Level 4;
 - (iv) remove a cashier's booth
- (b) it seeks approval of a temporary floor plan for Level 3, which it will deploy during the refurbishment of Level 4

4 CCL submitted, in summary, that:

- (a) the refurbishment to Level 4 will improve the food and beverage facilities and create a large respite area from gambling;
- (b) the repositioning of the cashier's booth on Level 4 will remove congestion away from the entrance to the Gambling Area;
- (c) Minimum Operating Standards will be maintained during the refurbishment;
- (d) the number of gaming machines and tables at the casino will not increase;
- (e) as the proposed changes to Level 4 are significant, it will close this area for up to eight weeks and deploy a temporary floor plan for Level 3; and



- (f) no changes to the casino's approved Gambling Areas are required

Submissions by the Secretary

5 The Secretary submitted that:

- (a) He is supportive of the proposed modifications, and considers that aspects of the proposal will have a positive effect on the layout of the venue and may help facilitate responsible gambling and host responsibility
- (b) He has no regulatory concerns with CCL's application, but notes that the proposal to lengthen a row of gaming machines to the edge of the Diamond Bar entrance may create a "blind spot" in the Diamond Bar when it is not staffed. In reply CCL stated that it will address this by having casino staff conduct regular sweeps of the Diamond Bar
- (c) One pan-tilt-zoom camera in the Diamond Bar may be insufficient to provide adequate coverage of the gaming machines proposed for that bar. In reply CCL stated that it will work this issue through with the local Inspectorate

Analysis

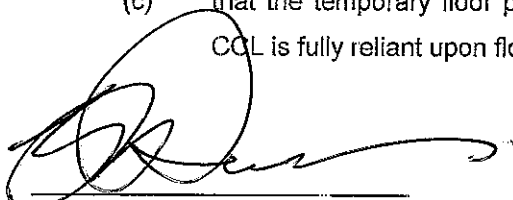
- 6 CCL proposes a number of amendments to the physical layout to the Levels 3 and 4 Gambling Areas. The Secretary views the changes very positively and is supportive of them. The Commission considers that none of the proposed amendments raise any issues of regulatory concern
- 7 The reconfiguration and relocation of the gaming machines and tables are minor and do not raise any issues of regulatory concern, except for the possible creation of a blind spot in the Diamond Bar. In order to address this, CCL stated that it will have casino staff make regular sweeps of the Diamond Bar to ensure that patrons are not tucked away and out of sight of casino staff. The Secretary was satisfied with this
- 8 The changes will not increase opportunities for casino gambling, or vary the casino's approved Gambling Areas. The Commission approves the permanent floor plans depicting the abovementioned changes
- 9 CCL currently relies upon approved Plan C. Once the refurbishment is complete and CCL is fully reliant on the permanent floor plans, Plan C and the temporary floor plan will cease to be valid



Decision of Commission

10 The Commission decided:

- (a) to approve the temporary floor plan, under condition 1 of CCL's venue licence (to be deployed during the refurbishment of Level 4);
- (b) to approve the permanent floor plans for Levels 3 and 4 (to be called Plans "B3 and B4") under condition 1 of CCL's venue licence; and
- (c) that the temporary floor plan and approved floor plan C cease to be valid once CCL is fully reliant upon floor plans B3 and B4



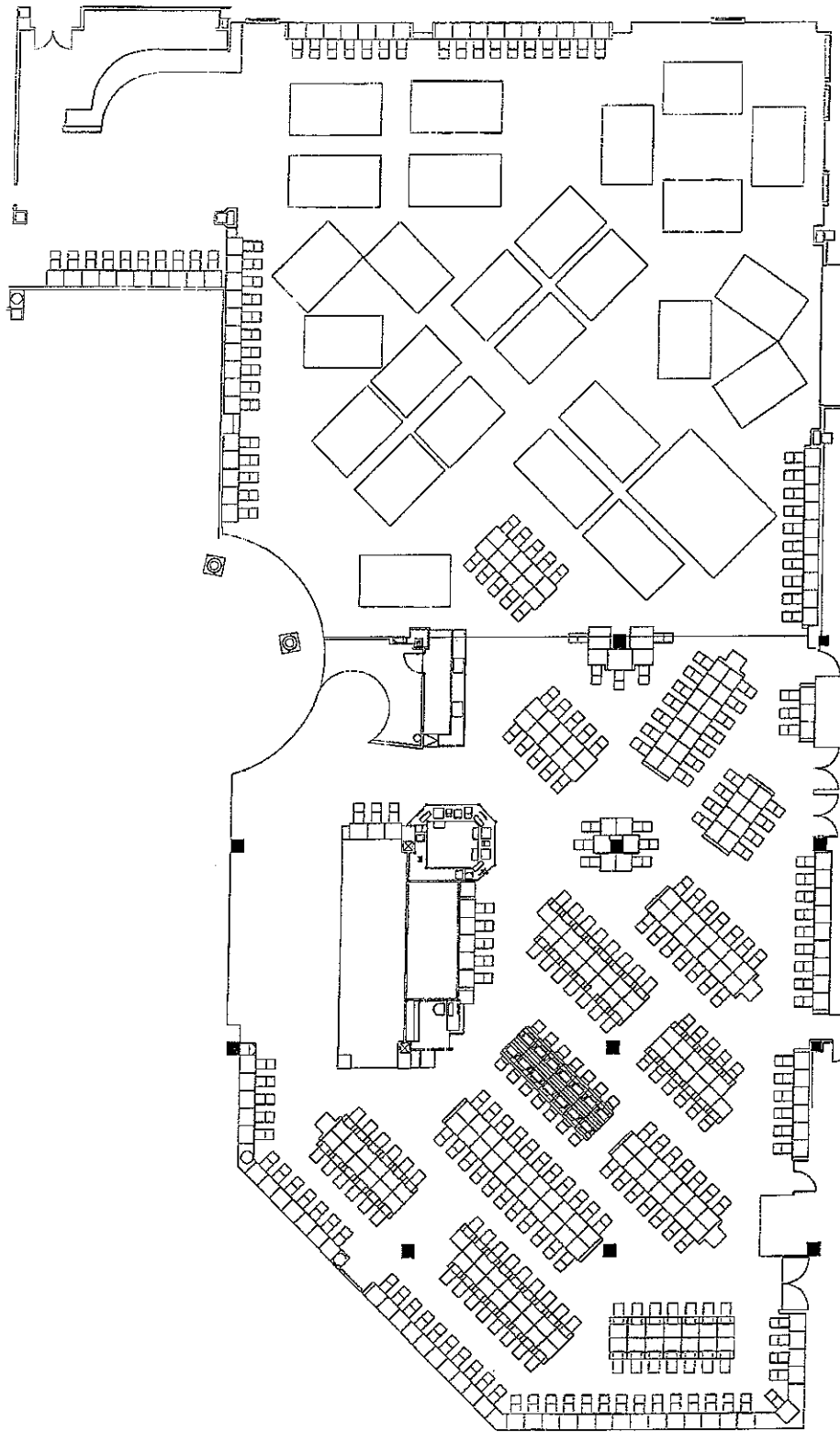
Graeme Reeves
Gambling Commissioner

for and on behalf of the
Gambling Commission

28 May 2008



Temporary Plan

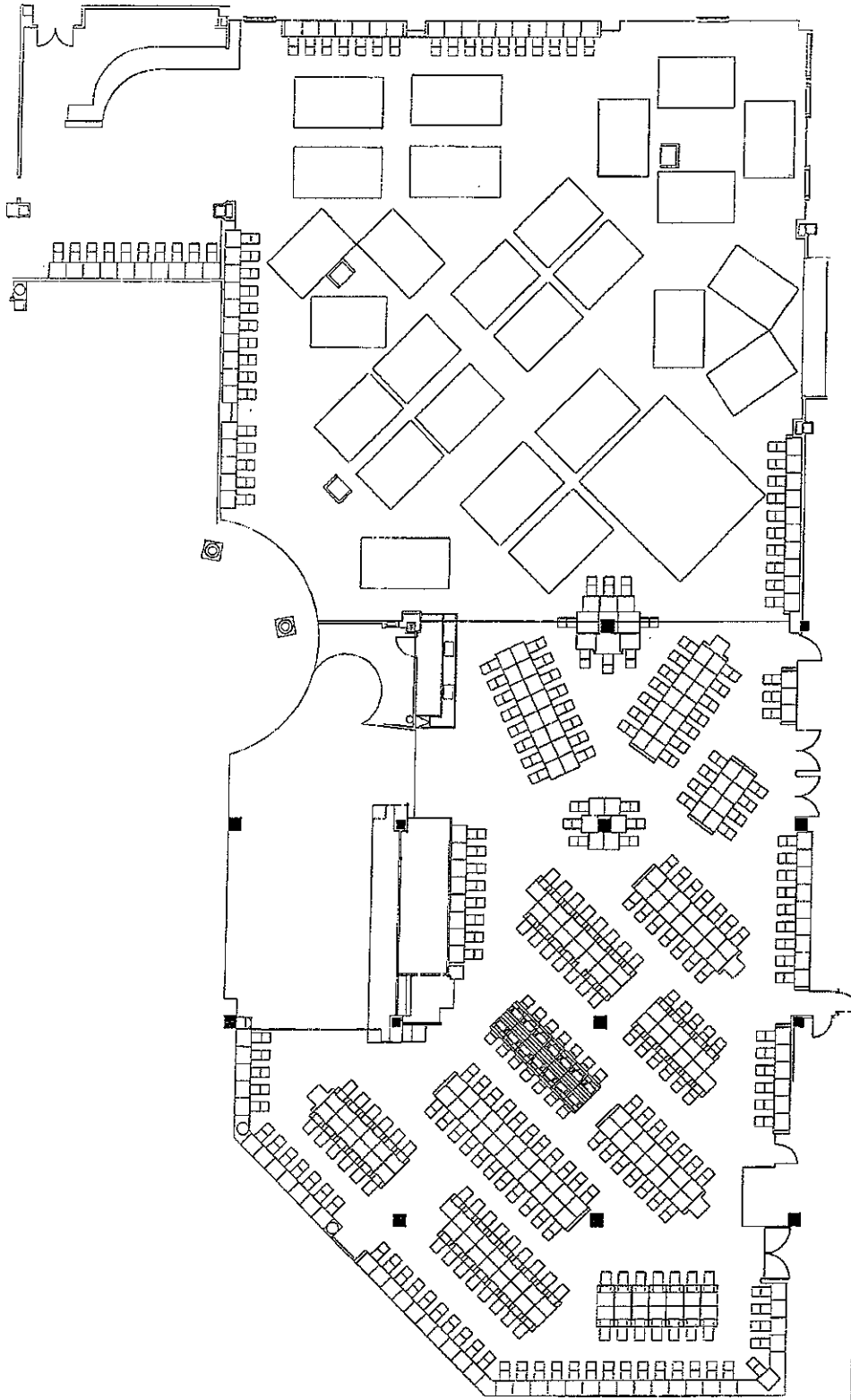


Christchurch Casinos Limited
Stuart Scott
Submitted to Gambling Commission 4 April 2008

LEVEL 3 - Transitional plan
309 MACHINES, 27 TABLES

SCALE 1:250

A handwritten signature in black ink, located in the bottom right corner of the page. The signature is stylized and appears to be the name of the author or reviewer of the plan.



Chinshurch Casinos Limited
Stuart Scott
Submitted to Gambling Commission 04 April 2008

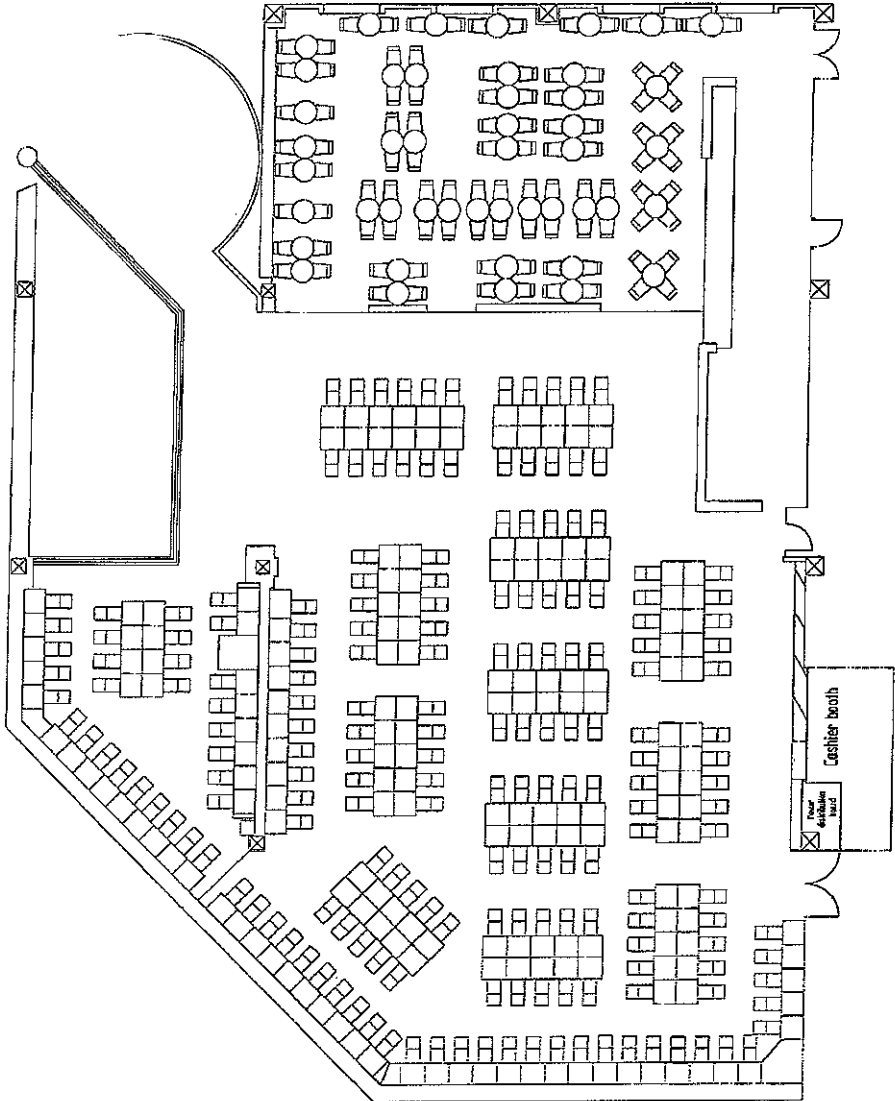
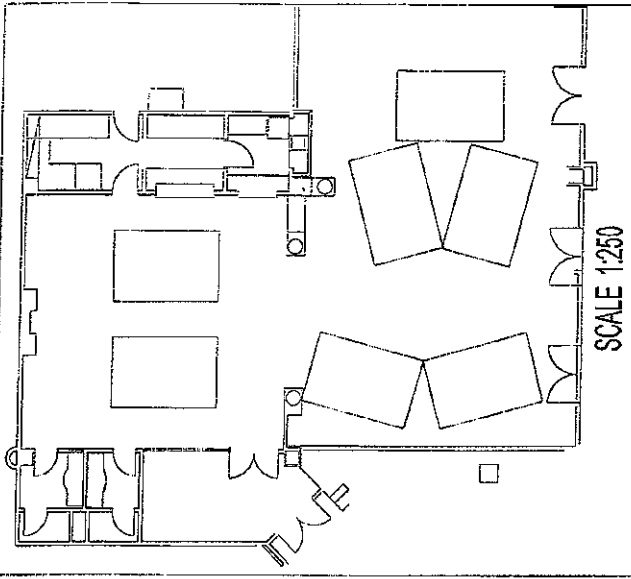
LEVEL 3

308 MACHINES, 27 TABLES

SCALE 1:250

A handwritten signature in black ink, located in the bottom right corner of the page. The signature is stylized and appears to be the name of the person who submitted the plan to the Gambling Commission.

B4



LEVEL 4

192 MACHINES, 7 Tables

Christchurch Casinos Limited
Stuart Scott
Submitted to Gambling Commission 4th April 2008

DRAWING NO.

ANNEXURE

Pursuant to condition 1 of CCL's venue licence, the following table game mixes may be operated by the Licence Holder on casino gaming tables, subject to the following conditions and requirements:

- (a) Roulette – 9 games
Black Jack – 14 games
Caribbean Stud Poker – 3 games
Midi Baccarat – 3 games
Mini Baccarat – 1 game
Money Wheel – 1 game
Poker – 2 games
Tai Sai – 1 game
- (b) Roulette – 8 games
Black Jack – 8 games
Caribbean Stud Poker – 3 games
Midi Baccarat – 4 games
Mini Baccarat – 1 game
Money Wheel – 1 game
Poker – 7 games
Tai Sai – 1 game
Electronic Roulette – 1 game
- (c) Roulette – 8 games
Black Jack – 11 games
Caribbean Stud Poker – 3 games
Midi Baccarat – 4 games
Mini Baccarat – 1 game
Money Wheel – 1 game
Poker – 4 games
Tai Sai – 1 game
Electronic Roulette – 1 game
- (d) Roulette – 9 games
Black Jack – 11 games
Caribbean Stud Poker – 3 games
Midi Baccarat – 4 games
Mini Baccarat – 1 game
Money Wheel – 1 game
Poker – 3 games
Tai Sai – 1 game
Electronic Roulette – 1 game
- (e) Roulette – 8 games
Black Jack – 12 games
Caribbean Stud Poker – 3 games
Midi Baccarat – 4 games
Mini Baccarat – 1 game
Money Wheel – 1 game
Poker – 3 games
Tai Sai – 1 game
Electronic Roulette – 1 game



- (f) Roulette – 8 games
- Black Jack – 9 games
- Caribbean Stud Poker – 2 games
- Midi Baccarat – 4 games
- Mini Baccarat – 1 game
- Money Wheel – 1 game
- Poker – 7 games
- Tai Sai (single) – 1 game
- Electronic Roulette – 1 game

Notes

- (a) The Licence Holder is permitted to change between the above approved table game mixes, subject to providing the Inspectorate with weekly advice of the table game mix to be used for the forthcoming week, and five working days notice any change from one approved game mix to another, except when alternating between table game mixes C and E, in which case the Licence Holder must telephone the local Inspectorate prior to flipping

- (b) The table game mixes refer (unless specified otherwise) to manual versions and do not extend to or permit the introduction of any electronic versions or new electronic aids or enhancements. If electronic versions, aids or enhancements are sought to be introduced, an application is required by the Licence Holder for approval of a revised floor layout and game mix

