

IN THE MATTER of the Gambling Act 2003

AND of an application by
**CHRISTCHURCH
CASINOS LIMITED** for
approval of an alternative
floor plan and game mixes

BEFORE THE GAMBLING COMMISSION

Members: P Chin (Chief Gambling Commissioner)
K M Ford
M M Lythe
P J Stanley
G L Reeves

Date of Application: 1 November 2007

Date of Decision: 14 December 2007

Date of Notification of Decision: **20** December 2007

DECISION

**ON AN APPLICATION BY CHRISTCHURCH CASINOS LIMITED
FOR APPROVAL OF AN ALTERNATIVE FLOOR PLAN AND GAME MIXES**

Application

1. Christchurch Casinos Limited ("**CCL**") applied to the Gambling Commission (the "**Commission**"), under condition 1 of its venue licence, for approval of:
 - (a) an additional floor plan with four new game mixes, B, C, D, and E; and
 - (b) to remove three existing game mixes, also called B, C and D.
2. If the four new game mixes are approved, the following game mixes would be available:

Game mix	A	B	C	D	E
Roulette	9	8	8	9	8
Black Jack	14	8	11	11	12
Caribbean Stud Poker	3	3	3	3	3
Midi Baccarat	3	4	4	4	4
Mini Baccarat	1	1	1	1	1
Money Wheel	1	1	1	1	1
Poker	2	7	4	3	3
Tai Sai	1	1	1	1	1
Electronic Roulette		1	1	1	1

Licence condition

3. Condition 1 of CCL's venue licence (as amended by the Commission by decision GC06/04) provides as follows:

Casino premises to be designed, developed, constructed, fitted out and commissioned for operation in accordance with application

The casino premises shall be designed, developed, constructed, fitted out and commissioned for operation generally in accordance with the application of the licence holder or with such changes as may from time to time be approved by the Commission, provided however that nothing in this condition shall apply in respect of any matter specified in the second schedule to the Casino Control Act 1990 (the "Act").

Submissions by CCL

4. CCL submitted, in summary, as follows:
- (a) the new floor plan is designed to logically group table games together, rather than group them in a formal "pit" configuration;
 - (b) there will be no change to the casino's existing Gambling Area;
 - (c) proposed game mixes, B, C, D and E will provide it with the necessary flexibility to meet its business needs, and will not increase opportunities for casino gambling;
 - (d) it no longer requires the game mixes approved by the Commission in decision GC42/06, also called B, C and D;
 - (e) it will transition from Touchbet Roulette to Rapid Roulette, with a maximum of 20 terminals;
 - (f) game supervision levels will be maintained as per Minimum Operating Standards;
 - (g) CCTV coverage will continue in terms of the Surveillance Standard.
5. In support of its submission that the proposed game mixes will not increase opportunities for casino gambling, CCL submitted that game mixes B, C, D and E all had fewer spaces and a slower overall rate of play than game mix A, CCL's regulatory benchmark, as follows:

Game mix	A	B	C	D	E
Player Spaces	662	612	645	656	656
Rounds per hour	1608	1354	1501	1517	1550

Submissions by the Secretary

6. The Secretary submitted, in summary, as follows:

- (a) he had no objection to the proposed floor plan; and

(b) the proposed game mixes will not increase gambling opportunities for casino gambling.

7. The Secretary noted that while analysing CCL's application, he discovered that the Casino Control Authority ("**CCA**") had approved the operation of 14 Touchbet Roulette terminals attached to a manual roulette table, and that this "combined" table was in operation on 19 September 2003. The Secretary noted that this may affect CCL's regulatory benchmark for this, and future, applications.
8. In reply, CCL submitted that as the CCA approval did not affect the present application, it need not be considered, but added that it would consider the approval, and its overall regulatory benchmark, in the future.

Analysis

9. CCL presently has two approved floor plans, the first (which may be called plan "A") being approved by the CCA over two separate dates in 2002 and 2003. CCL can presently operate four game mixes on this plan, A, B, C and D pursuant to decision GC42/06.
10. The second floor plan (which may be called plan "B") was approved by the Commission in decision GC25/06. CCL can operate a specific game mix on this plan to enable it to host the annual New Zealand Poker Championships.
11. CCL sought approval for a third floor plan (which may be called plan "C"), on which it wishes to operate four new game mixes, B, C, D and E.
12. The Secretary had no objection to the new floor layout and it raises no issues of regulatory concern.
13. In order to assess whether the new game mixes would give rise to increase in opportunities for casino gambling, the Commission compared them with game mix A, which is the game mix which provides the greatest level of opportunities for casino gambling at the Christchurch casino. Compared with game mix A, game mixes B, C, D and E all have fewer player spaces, and slower rates of play than game mix A. The Commission was satisfied that game mixes B, C, D and E would not increase opportunities for casino gambling.
14. As new game mixes B, C, D and E have been approved, the game mixes B, C and D approved in decision GC42/06 can be removed.

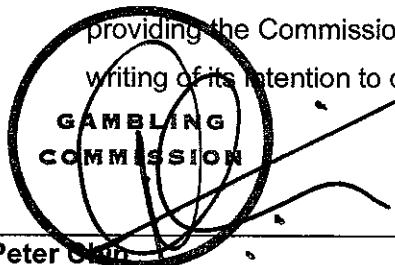
Decision of Commission

15. The Commission decided:

(a) to approve the alternative floor plan (plan C) (**attached** to this decision), together with game mixes B, C, D, and E, under condition 1 of CCL's venue licence; and

(b) that the game mixes approved by the Commission in decision GC42/06, B, C and D, cease to be valid from the date of this decision.

16. The Licence Holder is permitted to change between plans A, B and C, subject to providing the Commission and Inspectorate with a minimum of five working days notice in writing of its intention to do so.



Peter Clark
Chief Gambling Commissioner

for and on behalf of the
Gambling Commission

20 December 2007

ANNEXURE

Pursuant to condition 1 of CCL's venue licence, the following table game mixes may be operated by the Licence Holder on casino gaming tables, subject to the following conditions and requirements:

- (a) Roulette – 9 games
Black Jack – 14 games
Caribbean Stud Poker – 3 games
Midi Baccarat – 3 games
Mini Baccarat – 1 game
Money Wheel – 1 game
Poker – 2 games
Tai Sai – 1 game

- (b) Roulette – 8 games
Black Jack – 8 games
Caribbean Stud Poker – 3 games
Midi Baccarat – 4 games
Mini Baccarat – 1 game
Money Wheel – 1 game
Poker – 7 games
Tai Sai – 1 game
Electronic Roulette – 1 game

- (c) Roulette – 8 games
Black Jack – 11 games
Caribbean Stud Poker – 3 games
Midi Baccarat – 4 games
Mini Baccarat – 1 game
Money Wheel – 1 game
Poker – 4 games
Tai Sai – 1 game
Electronic Roulette – 1 game

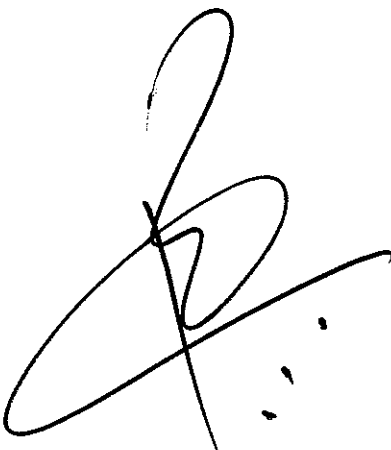
- (d) Roulette – 9 games
Black Jack – 11 games
Caribbean Stud Poker – 3 games
Midi Baccarat – 4 games
Mini Baccarat – 1 game
Money Wheel – 1 game
Poker – 3 games
Tai Sai – 1 game
Electronic Roulette – 1 game

- (e) Roulette – 8 games
Black Jack – 12 games
Caribbean Stud Poker – 3 games
Midi Baccarat – 4 games
Mini Baccarat – 1 game
Money Wheel – 1 game
Poker – 3 games
Tai Sai – 1 game
Electronic Roulette – 1 game

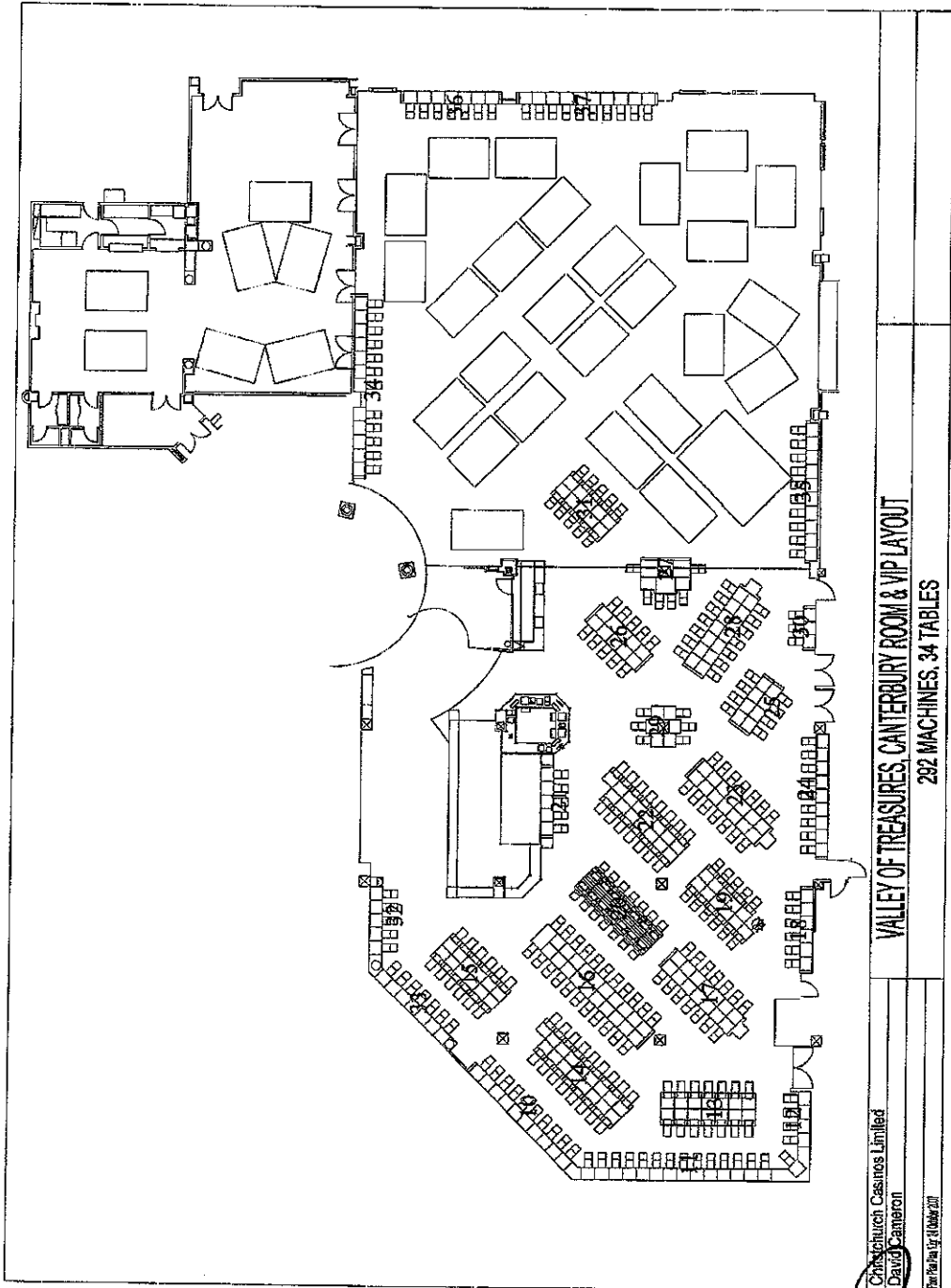
Notes

- (a) The Licence Holder is permitted to change between the above approved table game mixes, subject to providing the Inspectorate with weekly advice of the table game mix to be used for the forthcoming week, and five working days notice any change from one approved game mix to another, except when alternating between table game mixes C and E, in which case the Licence Holder must telephone the local Inspectorate prior to flipping.

- (b) The table game mixes refer (unless specified otherwise) to manual versions and do not extend to or permit the introduction of any electronic versions or new electronic aids or enhancements. If electronic versions, aids or enhancements are sought to be introduced, an application is required by the Licence Holder for approval of a revised floor layout and game mix.

A handwritten signature in black ink, consisting of several loops and a long horizontal stroke extending to the right.

10



Christchurch Casinos Limited
David Cameron

Plan No. 10/10/2011

VALLEY OF TREASURES, CANTERBURY ROOM & VIP LAYOUT

292 MACHINES, 34 TABLES

