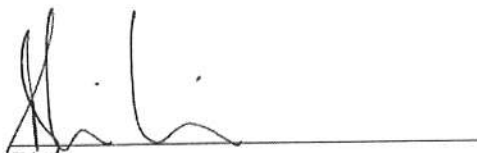


**DECISION UNDER DELEGATED AUTHORITY ON AN APPLICATION
BY SKYCITY CASINO MANAGEMENT LIMITED FOR APPROVAL
OF NEW FLOOR PLANS FOR THE AUCKLAND CASINO**

Date of Decision: 23 November 2011

1. On 21 November 2011, SKYCITY Casino Management Limited ("**SCML**") applied, pursuant to condition 11 of its operator's licence for the Auckland casino, for Gambling Commission approval of new floor plans.
2. The Commission has already has already approved the layout proposed for the plans (in plans "2011 L2 002" for level 2, "2011 L3 003" for level 3, "2011 L5N 002" for the north side of level 5, and "2011 L5S (i)-(x)" for the south side of level 5). These plans would be renamed as: "2011 L2 003", "2011 L3 004", "2011 L5N 003", and "2011 L5S 011", with the relabeling intended to provide greater clarity around what plans are deployed on the different levels and locations of the Auckland.
3. As the application raises no issues the Commission needs to consider, the new plans are approved by the Chief Gambling Commissioner and the Executive Director under delegated authority, pursuant to condition 11 of SCML's operator's licence.
4. Plans "2011 L2 003", "2011 L3 004", "2011 L5N 003", and "2011 L5S 011" are **attached**. Once SCML is fully reliant on these plans, all previously approved plans cease to be valid.


Graeme Reeves
Chief Gambling Commissioner
Gambling Commission


Blair Cairncross
Executive Director
Gambling Commission

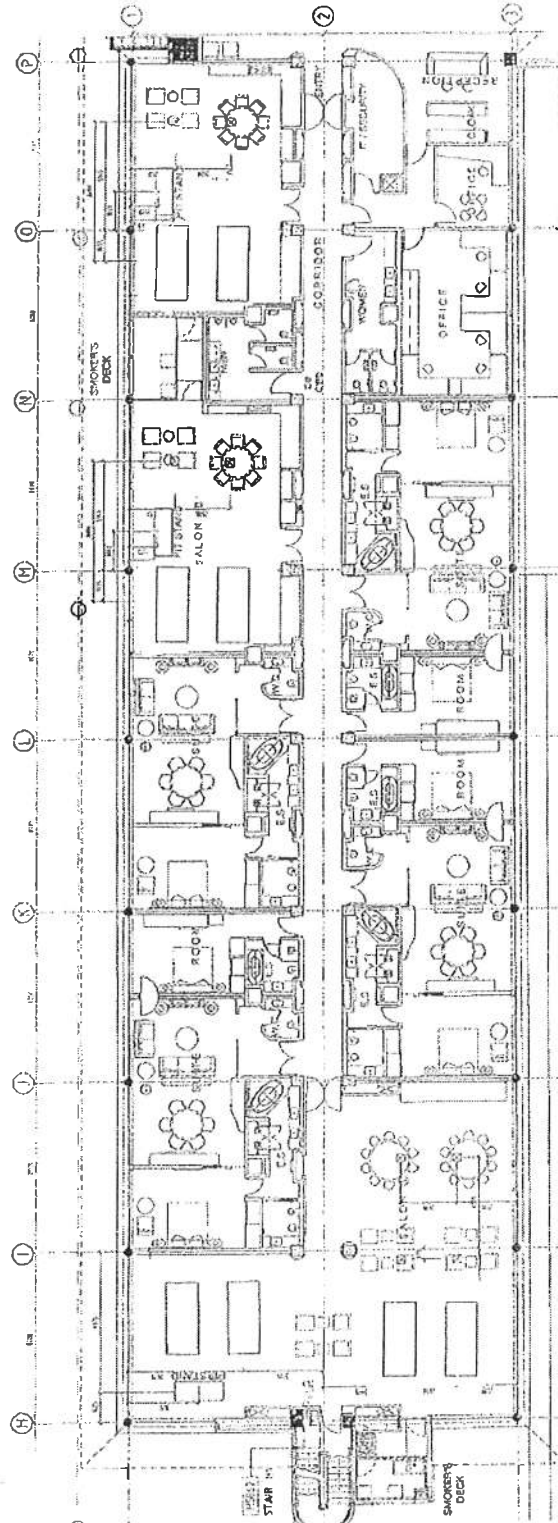
23 November 2011





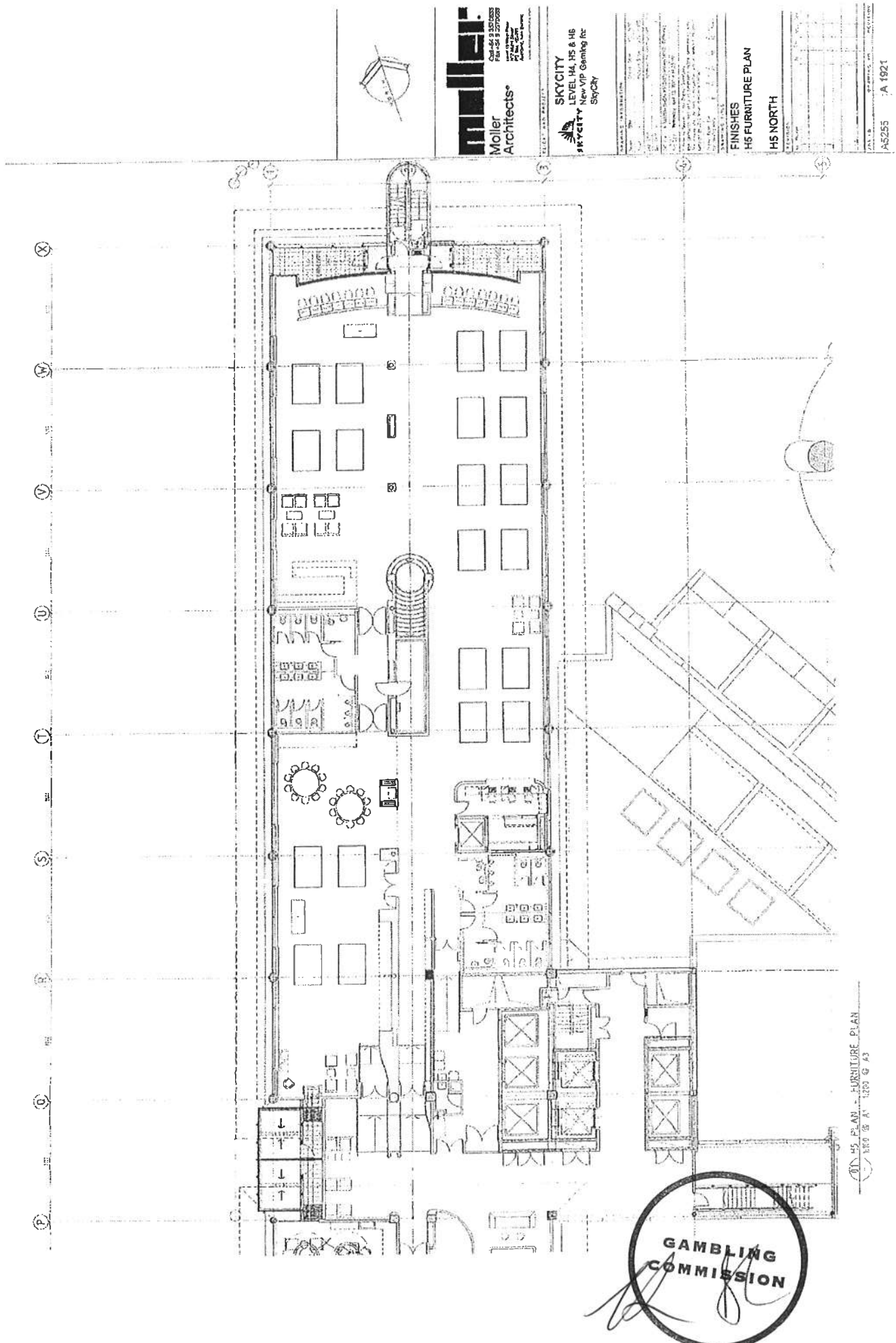
SKYCITY
LEVEL H4, H5 & H6
Now VPO Gaming for
SKYCITY

1	2	3	4	5	6	7	8	9	10	11	12	13	14	15	16	17	18	19	20	21	22	23	24	25	26	27	28	29	30	31	32	33	34	35	36	37	38	39	40	41	42	43	44	45	46	47	48	49	50	51	52	53	54	55	56	57	58	59	60	61	62	63	64	65	66	67	68	69	70	71	72	73	74	75	76	77	78	79	80	81	82	83	84	85	86	87	88	89	90	91	92	93	94	95	96	97	98	99	100
1	2	3	4	5	6	7	8	9	10	11	12	13	14	15	16	17	18	19	20	21	22	23	24	25	26	27	28	29	30	31	32	33	34	35	36	37	38	39	40	41	42	43	44	45	46	47	48	49	50	51	52	53	54	55	56	57	58	59	60	61	62	63	64	65	66	67	68	69	70	71	72	73	74	75	76	77	78	79	80	81	82	83	84	85	86	87	88	89	90	91	92	93	94	95	96	97	98	99	100
1	2	3	4	5	6	7	8	9	10	11	12	13	14	15	16	17	18	19	20	21	22	23	24	25	26	27	28	29	30	31	32	33	34	35	36	37	38	39	40	41	42	43	44	45	46	47	48	49	50	51	52	53	54	55	56	57	58	59	60	61	62	63	64	65	66	67	68	69	70	71	72	73	74	75	76	77	78	79	80	81	82	83	84	85	86	87	88	89	90	91	92	93	94	95	96	97	98	99	100
1	2	3	4	5	6	7	8	9	10	11	12	13	14	15	16	17	18	19	20	21	22	23	24	25	26	27	28	29	30	31	32	33	34	35	36	37	38	39	40	41	42	43	44	45	46	47	48	49	50	51	52	53	54	55	56	57	58	59	60	61	62	63	64	65	66	67	68	69	70	71	72	73	74	75	76	77	78	79	80	81	82	83	84	85	86	87	88	89	90	91	92	93	94	95	96	97	98	99	100
1	2	3	4	5	6	7	8	9	10	11	12	13	14	15	16	17	18	19	20	21	22	23	24	25	26	27	28	29	30	31	32	33	34	35	36	37	38	39	40	41	42	43	44	45	46	47	48	49	50	51	52	53	54	55	56	57	58	59	60	61	62	63	64	65	66	67	68	69	70	71	72	73	74	75	76	77	78	79	80	81	82	83	84	85	86	87	88	89	90	91	92	93	94	95	96	97	98	99	100
1	2	3	4	5	6	7	8	9	10	11	12	13	14	15	16	17	18	19	20	21	22	23	24	25	26	27	28	29	30	31	32	33	34	35	36	37	38	39	40	41	42	43	44	45	46	47	48	49	50	51	52	53	54	55	56	57	58	59	60	61	62	63	64	65	66	67	68	69	70	71	72	73	74	75	76	77	78	79	80	81	82	83	84	85	86	87	88	89	90	91	92	93	94	95	96	97	98	99	100
1	2	3	4	5	6	7	8	9	10	11	12	13	14	15	16	17	18	19	20	21	22	23	24	25	26	27	28	29	30	31	32	33	34	35	36	37	38	39	40	41	42	43	44	45	46	47	48	49	50	51	52	53	54	55	56	57	58	59	60	61	62	63	64	65	66	67	68	69	70	71	72	73	74	75	76	77	78	79	80	81	82	83	84	85	86	87	88	89	90	91	92	93	94	95	96	97	98	99	100
1	2	3	4	5	6	7	8	9	10	11	12	13	14	15	16	17	18	19	20	21	22	23	24	25	26	27	28	29	30	31	32	33	34	35	36	37	38	39	40	41	42	43	44	45	46	47	48	49	50	51	52	53	54	55	56	57	58	59	60	61	62	63	64	65	66	67	68	69	70	71	72	73	74	75	76	77	78	79	80	81	82	83	84	85	86	87	88	89	90	91	92	93	94	95	96	97	98	99	100
1	2	3	4	5	6	7	8	9	10	11	12	13	14	15	16	17	18	19	20	21	22	23	24	25	26	27	28	29	30	31	32	33	34	35	36	37	38	39	40	41	42	43	44	45	46	47	48	49	50	51	52	53	54	55	56	57	58	59	60	61	62	63	64	65	66	67	68	69	70	71	72	73	74	75	76	77	78	79	80	81	82	83	84	85	86	87	88	89	90	91	92	93	94	95	96	97	98	99	100
1	2	3	4	5	6	7	8	9	10	11	12	13	14	15	16	17	18	19	20	21	22	23	24	25	26	27	28	29	30	31	32	33	34	35	36	37	38	39	40	41	42	43	44	45	46	47	48	49	50	51	52	53	54	55	56	57	58	59	60	61	62	63	64	65	66	67	68	69	70	71	72	73	74	75	76	77	78	79	80	81	82	83	84	85	86	87	88	89	90	91	92	93	94	95	96	97	98	99	100
1	2	3	4	5	6	7	8	9	10	11	12	13	14	15	16	17	18	19	20	21	22	23	24	25	26	27	28	29	30	31	32	33	34	35	36	37	38	39	40	41	42	43	44	45	46	47	48	49	50	51	52	53	54	55	56	57	58	59	60	61	62	63	64	65	66	67	68	69	70	71	72	73	74	75	76	77	78	79	80	81	82	83	84	85	86	87	88	89	90	91	92	93	94	95	96	97	98	99	100
1	2	3	4	5	6	7	8	9	10	11	12	13	14	15	16	17	18	19	20	21	22	23	24	25	26	27	28	29	30	31	32	33	34	35	36	37	38	39	40	41	42	43	44	45	46	47	48	49	50	51	52	53	54	55	56	57	58	59	60	61	62	63	64	65	66	67	68	69	70	71	72	73	74	75	76	77	78	79	80	81	82	83	84	85	86	87	88	89	90	91	92	93	94	95	96	97	98	99	100
1	2	3	4	5	6	7	8	9	10	11	12	13	14	15	16	17	18	19	20	21	22	23	24	25	26	27	28	29	30	31	32	33	34	35	36	37	38	39	40	41	42	43	44	45	46	47	48	49	50	51	52	53	54	55	56	57	58	59	60	61	62	63	64	65	66	67	68	69	70	71	72	73	74	75	76	77	78	79	80	81	82	83	84	85	86	87	88	89	90	91	92	93	94	95	96	97	98	99	100
1	2	3	4	5	6	7	8	9	10	11	12	13	14	15	16	17	18	19	20	21	22	23	24	25	26	27	28	29	30	31	32	33	34	35	36	37	38	39	40	41	42	43	44	45	46	47	48	49	50	51	52	53	54	55	56	57	58	59	60	61	62	63	64	65	66	67	68	69	70	71	72	73	74	75	76	77	78	79	80	81	82	83	84	85	86	87	88	89	90	91	92	93	94	95	96	97	98	99	100
1	2	3	4	5	6	7	8	9	10	11	12	13	14	15	16	17	18	19	20	21	22	23	24	25	26	27	28	29	30	31	32	33	34	35	36	37	38	39	40	41	42	43	44	45	46	47	48	49	50	51	52	53	54	55	56	57	58	59	60	61	62	63	64	65	66	67	68	69	70	71	72	73	74	75	76	77	78	79	80	81	82	83	84	85	86	87	88	89	90	91	92	93	94	95	96	97	98	99	100
1	2	3	4	5	6	7	8	9	10	11	12	13	14	15	16	17	18	19	20	21	22	23	24	25	26	27	28	29	30	31	32	33	34	35	36	37	38	39	40	41	42	43	44	45	46	47	48	49	50	51	52	53	54	55	56	57	58	59	60	61	62	63	64	65	66	67	68	69	70	71	72	73	74	75	76	77	78	79	80	81	82	83	84	85	86	87	88	89	90	91	92	93	94	95	96	97	98	99	100
1	2	3	4	5	6	7	8	9	10	11	12	13	14	15	16	17	18	19	20	21	22	23	24	25	26	27	28	29	30	31	32	33	34	35	36	37	38	39	40	41	42	43	44	45	46	47	48	49	50	51	52	53	54	55	56	57	58	59	60	61	62	63	64	65	66	67	68	69	70	71	72	73	74	75	76	77	78	79	80	81	82	83	84	85	86	87	88	89	90	91	92	93	94	95	96	97	98	99	100
1	2	3	4	5	6	7	8	9	10	11	12	13	14	15	16	17	18	19	20	21	22	23	24	25	26	27	28	29	30	31	32	33	34	35	36	37	38	39	40	41	42	43	44	45	46	47	48	49	50	51	52	53	54	55	56	57	58	59	60	61	62	63	64	65	66	67	68	69	70	71	72	73	74																										



07 HS SOUTH FURNITURE SETOUT
A 1436 1:100 @ A1 1:200 @ A3





moller.
Moller
Architects®
One-Stop Design
Phone: 212.251.0000
Fax: 212.251.0001
www.mollerarchitects.com

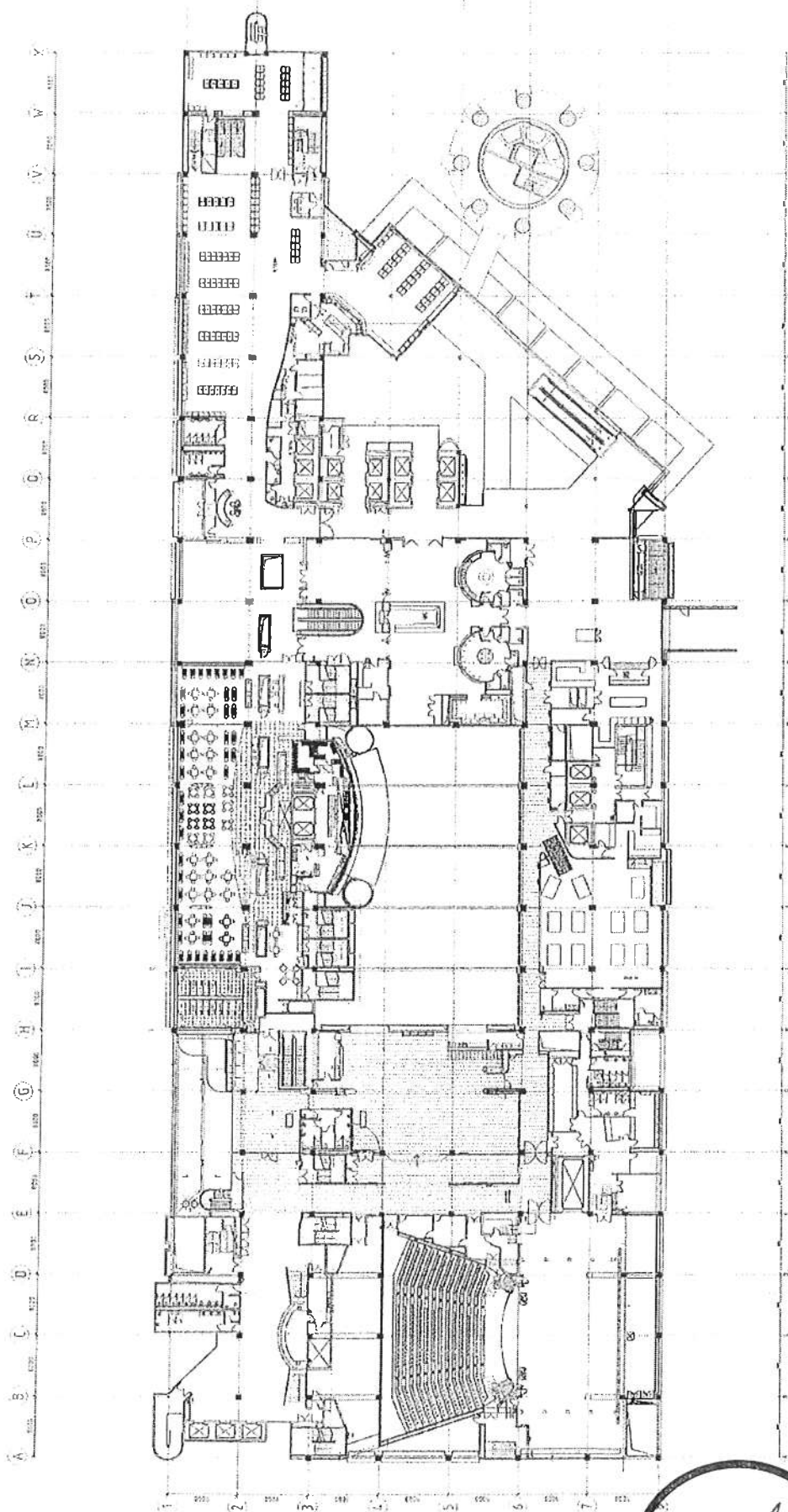
SKYCITY
LEVEL 14, 15 & 16
New York Gaming Inc.
SkyCity

FINISHES
H5 FURNITURE PLAN
H5 NORTH

A5255 A 1921

PLAN - FURNITURE PLAN
1/10/08 12:00 PM





LEGEND

SYMBOL	DESCRIPTION
[Symbol]	BAR
[Symbol]	POOL
[Symbol]	RESTROOM
[Symbol]	STAIR
[Symbol]	ELEVATOR
[Symbol]	LOBBY
[Symbol]	CONFERENCE
[Symbol]	OFFICE
[Symbol]	RECEPTION
[Symbol]	ENTRANCE
[Symbol]	EXIT
[Symbol]	SEATING
[Symbol]	STATION
[Symbol]	STREET
[Symbol]	LANDSCAPE
[Symbol]	WATER
[Symbol]	PLANT
[Symbol]	ROCK
[Symbol]	GLASS
[Symbol]	METAL
[Symbol]	WOOD
[Symbol]	STONE
[Symbol]	CEILING
[Symbol]	FLOOR
[Symbol]	WALL
[Symbol]	DOOR
[Symbol]	WINDOW
[Symbol]	SCREEN
[Symbol]	ART
[Symbol]	SCULPTURE
[Symbol]	FURNITURE
[Symbol]	APPLIANCE
[Symbol]	FIXTURE
[Symbol]	EQUIPMENT
[Symbol]	SYSTEM
[Symbol]	COMPONENT
[Symbol]	PART
[Symbol]	ASSEMBLY
[Symbol]	UNIT
[Symbol]	MODULE
[Symbol]	SECTION
[Symbol]	DETAIL
[Symbol]	ANNOTATION
[Symbol]	REFERENCE
[Symbol]	NOTATION
[Symbol]	TEXT
[Symbol]	LINE
[Symbol]	ARC
[Symbol]	CIRCLE
[Symbol]	SQUARE
[Symbol]	TRIANGLE
[Symbol]	POLYGON
[Symbol]	ELLIPSE
[Symbol]	SPHERE
[Symbol]	CYLINDER
[Symbol]	CONE
[Symbol]	PRISM
[Symbol]	PIRAMID
[Symbol]	WEDGE
[Symbol]	SLAB
[Symbol]	BEAM
[Symbol]	COLUMN
[Symbol]	POST
[Symbol]	PILE
[Symbol]	ANCHOR
[Symbol]	FASTENER
[Symbol]	SCREW
[Symbol]	NAIL
[Symbol]	BOLT
[Symbol]	WASHER
[Symbol]	PLATE
[Symbol]	BRACKET
[Symbol]	CLAMP
[Symbol]	STRAP
[Symbol]	ROPE
[Symbol]	CABLE
[Symbol]	WIRE
[Symbol]	PIPE
[Symbol]	TUBE
[Symbol]	DUCT
[Symbol]	CHANNEL
[Symbol]	TRUSS
[Symbol]	JOIST
[Symbol]	RIB
[Symbol]	RAFTER
[Symbol]	BEAM
[Symbol]	POST
[Symbol]	PILE
[Symbol]	ANCHOR
[Symbol]	FASTENER
[Symbol]	SCREW
[Symbol]	NAIL
[Symbol]	BOLT
[Symbol]	WASHER
[Symbol]	PLATE
[Symbol]	BRACKET
[Symbol]	CLAMP
[Symbol]	STRAP
[Symbol]	ROPE
[Symbol]	CABLE
[Symbol]	WIRE
[Symbol]	PIPE
[Symbol]	TUBE
[Symbol]	DUCT
[Symbol]	CHANNEL
[Symbol]	TRUSS
[Symbol]	JOIST
[Symbol]	RIB
[Symbol]	RAFTER



Call 416 317-5268
For 416 317-5268

moller. Moller Architects

SKYCITY
ENTERTAINMENT GROUP

Level 3 Gaming Layout
SKYCITY - Gaming Tables
Placement into Poker Zone
18/10/2011

5132C A1205 B

