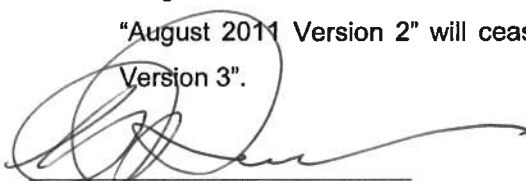


**DECISION UNDER DELEGATED AUTHORITY ON AN APPLICATION  
BY SKYCITY CASINO MANAGEMENT LIMITED FOR APPROVAL OF  
NEW FLOOR PLANS FOR THE AUCKLAND CASINO**

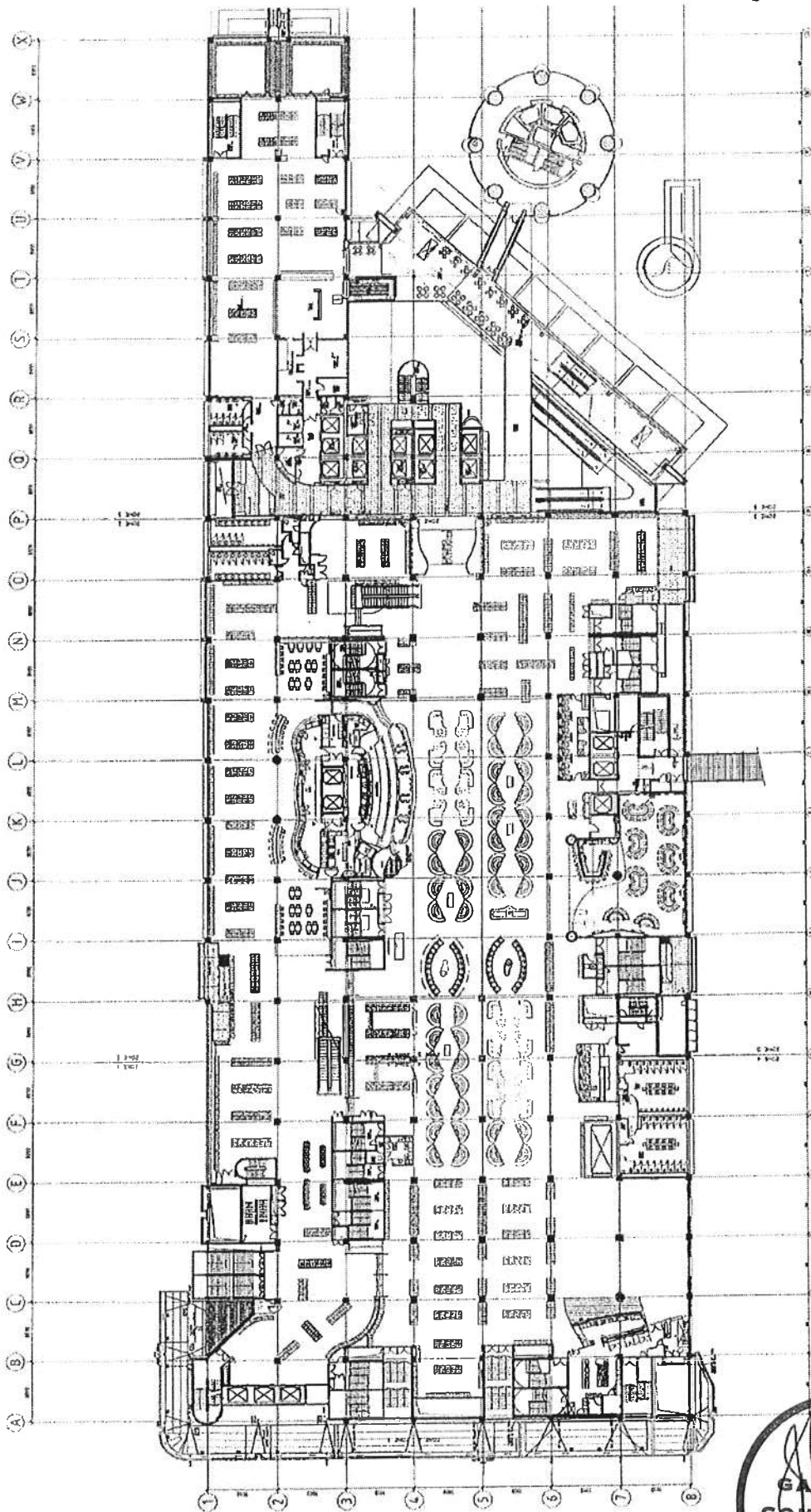
**Date of Decision:** 17<sup>th</sup> August 2011

1. On 12 August 2011, SKYCITY Casino Management Limited ("**SCML**") applied, pursuant to condition 11 of its operator's licence for the Auckland casino, for approval of new floor plans, "August 2011 Version 2" and "August 2011 Version 3".
2. SCML is currently reliant on floor plan "July 2011 Temporary", together with a number of additional temporary floor plans in respect of the Gambling Areas on the south side of level 5.
3. On or about 19 August 2011, SCML will transition to floor plan "August 2011" (while continuing to rely on the temporary floor plans for level 5).
4. The Gambling Areas on the north side of level 5 are due to open at the end of August 2011 and SCML wants to relocate 14 gaming machines from levels 2 and 3 to this area. SCML seeks approval of "August 2011 Version 2" which depicts this.
5. Plans for the south side of level 5 have not been included, as SCML wants to continue to rely upon the temporary plans for that area.
6. After transitioning to "August 2011 Version 2", SCML wants to remove 13 of the 15 tables in the Pacific Room on level 3. SCML seeks approval of "August 2011 Version 3" which depicts this.
7. The application raises no issues the Commission needs to consider. Accordingly the new plans are approved by the Chief Gambling Commissioner and the Executive Director under delegated authority pursuant to condition 11 of SCML's operator's licence.
8. The new floor plans, "August 2011 Version 2" and "August 2011 Version 3" are **attached**.
9. "August 2011" will cease to be valid once SCML is reliant on "August 2011 Version 2".  
"August 2011 Version 2" will cease to be valid once SCML is reliant on "August 2011 Version 3".

  
**Graeme Reeves**  
Chief Gambling Commissioner  
Gambling Commission

  
**Blair Cairncross**  
Executive Director  
Gambling Commission



[illegible]

1-800-4-A-BOOK  
 1-800-4-2626  
 1-800-4-2626  
 1-800-4-2626

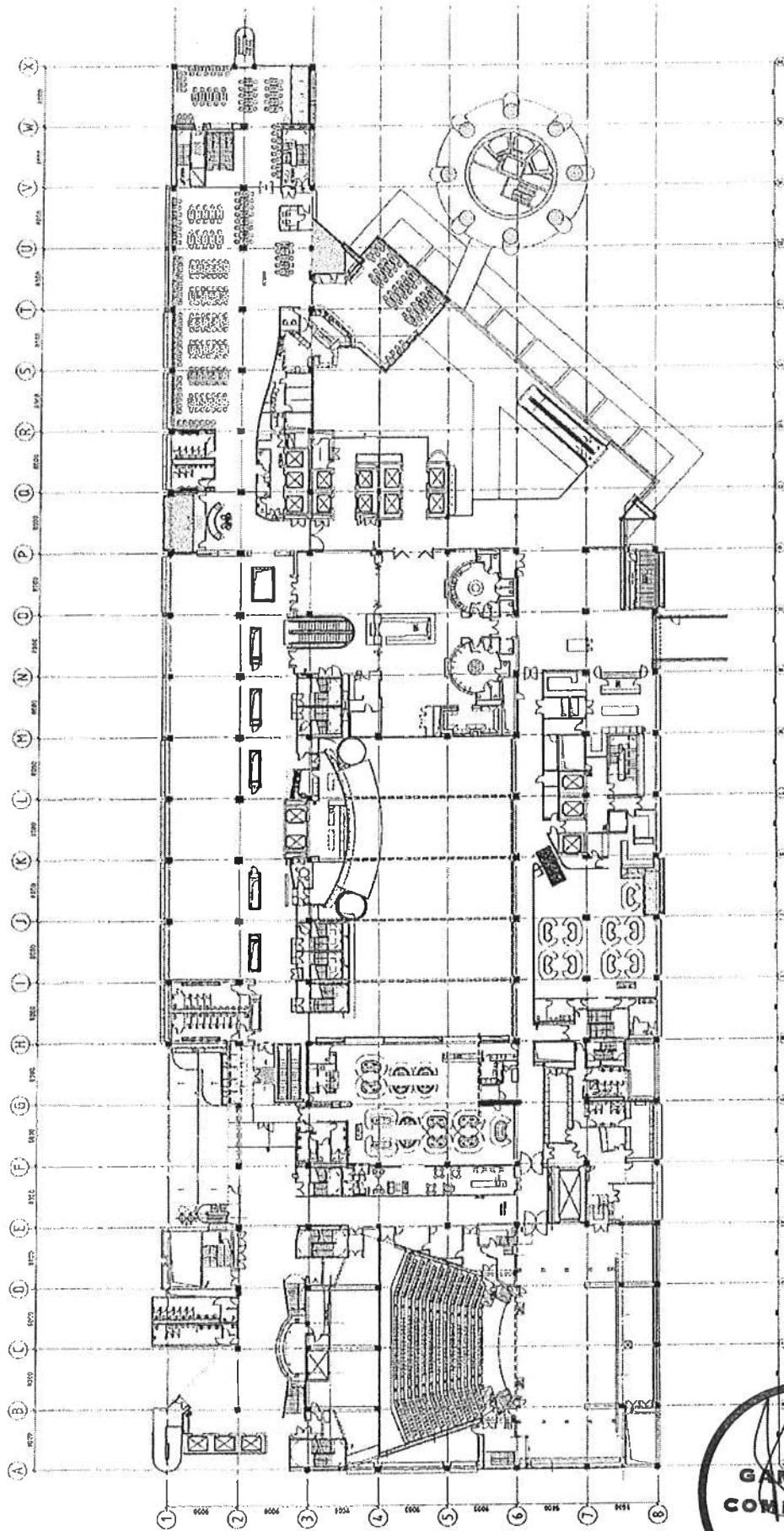
**moller-** Moller Architects®

**Sky City Entertainment Group**  
**Gaming Layouts**

[illegible]

Level 2 Gaming Layout  
SKY CITY - Gaming Machine  
Initial 5 North Transfer  
11/08/2011

5132C A-702



**SCHEMATIC**

NO.	DESCRIPTION	DATE	BY	CHKD.
1	SKYCITY - Gaming Machine Hotel 5 North Transfer	11/08/2011		
2				
3				
4				
5				
6				
7				
8				
9				
10				
11				
12				
13				
14				
15				
16				
17				
18				
19				
20				
21				
22				
23				
24				
25				
26				
27				
28				
29				
30				
31				
32				
33				
34				
35				
36				
37				
38				
39				
40				
41				
42				
43				
44				
45				
46				
47				
48				
49				
50				
51				
52				
53				
54				
55				
56				
57				
58				
59				
60				
61				
62				
63				
64				
65				
66				
67				
68				
69				
70				
71				
72				
73				
74				
75				
76				
77				
78				
79				
80				
81				
82				
83				
84				
85				
86				
87				
88				
89				
90				
91				
92				
93				
94				
95				
96				
97				
98				
99				
100				

NO.	DESCRIPTION	DATE	BY	CHKD.
1	SKYCITY - Gaming Machine Hotel 5 North Transfer	11/08/2011		
2				
3				
4				
5				
6				
7				
8				
9				
10				
11				
12				
13				
14				
15				
16				
17				
18				
19				
20				
21				
22				
23				
24				
25				
26				
27				
28				
29				
30				
31				
32				
33				
34				
35				
36				
37				
38				
39				
40				
41				
42				
43				
44				
45				
46				
47				
48				
49				
50				
51				
52				
53				
54				
55				
56				
57				
58				
59				
60				
61				
62				
63				
64				
65				
66				
67				
68				
69				
70				
71				
72				
73				
74				
75				
76				
77				
78				
79				
80				
81				
82				
83				
84				
85				
86				
87				
88				
89				
90				
91				
92				
93				
94				
95				
96				
97				
98				
99				
100				

**Level 3 Gaming Layout**  
**SKYCITY - Gaming Machine**  
**Hotel 5 North Transfer**  
**11/08/2011**

NO.	DESCRIPTION	DATE	BY	CHKD.
1	SKYCITY - Gaming Machine Hotel 5 North Transfer	11/08/2011		
2				
3				
4				
5				
6				
7				
8				
9				
10				
11				
12				
13				
14				
15				
16				
17				
18				
19				
20				
21				
22				
23				
24				
25				
26				
27				
28				
29				
30				
31				
32				
33				
34				
35				
36				
37				
38				
39				
40				
41				
42				
43				
44				
45				
46				
47				
48				
49				
50				
51				
52				
53				
54				
55				
56				
57				
58				
59				
60				
61				
62				
63				
64				
65				
66				
67				
68				
69				
70				
71				
72				
73				
74				
75				
76				
77				
78				
79				
80				
81				
82				
83				
84				
85				
86				
87				
88				
89				
90				
91				
92				
93				
94				
95				
96				
97				
98				
99				
100				

**Sky City Entertainment Group**  
**Gaming Layouts**



**SKYCITY**  
**entertainment group**

**moller Architects**



AG = ROUTINE  
 BJ = BUREAU  
 CS = CHAIRMAN'S  
 MD = MR. MORGAN  
 N = N.Y. LION



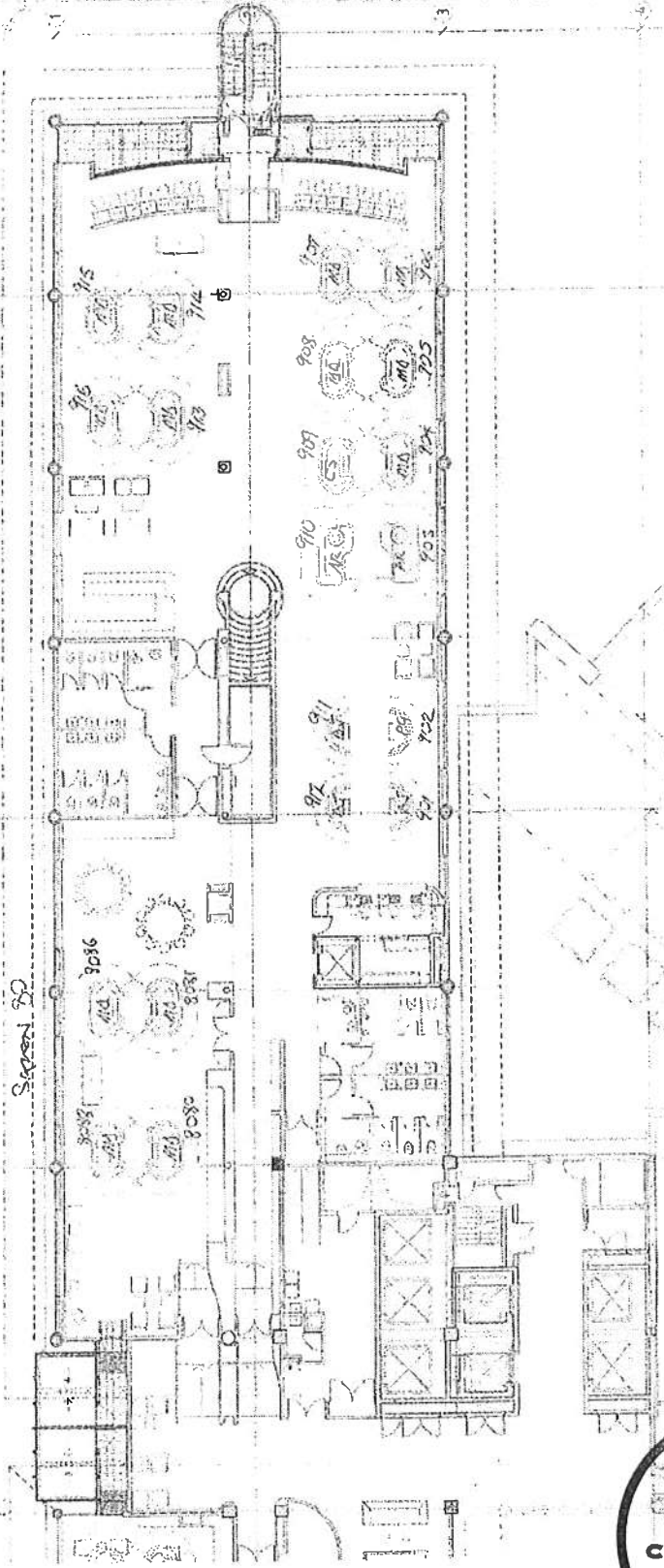
**Moller Architects**  
 100 N. 10TH ST.  
 SUITE 1000  
 NEW YORK, NY 10017  
 TEL: 212-691-1000  
 FAX: 212-691-1001  
 WWW.MOLLERARCHITECTS.COM

**SKY CITY**  
 LEVEL H4, H5 & H6  
 SKY CITY New York Gaming Ltd.  
 SkyCity

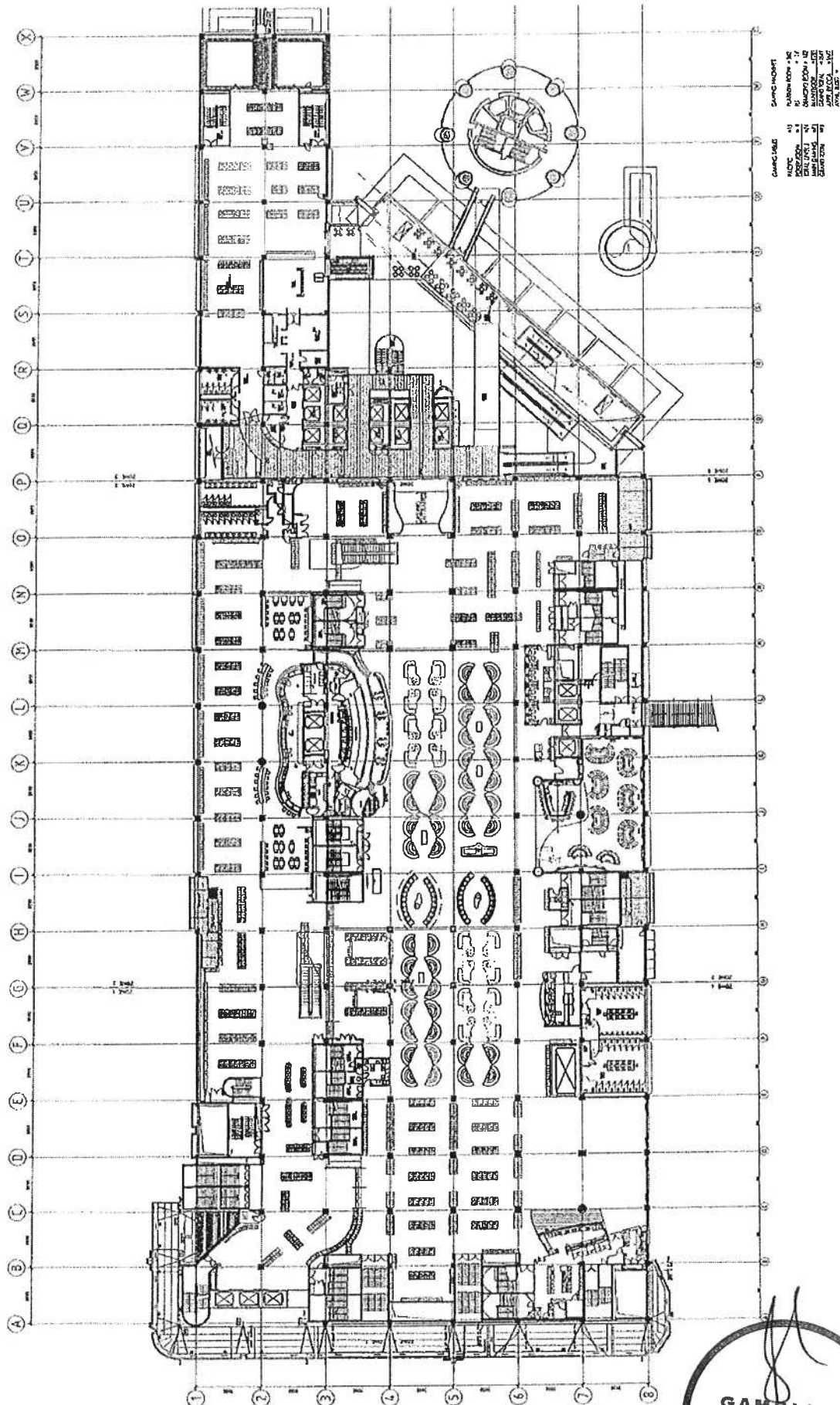
FINISHES  
 H5 FURNITURE PLAN  
 H5 NORTH

A5255 A 1921

**APPROVED**  
 Mark Walker




01 H5 PLAN - FURNITURE PLAN  
 1:00 @ A1 1:00 @ A3



**GAMBLING  
COMMISSION**

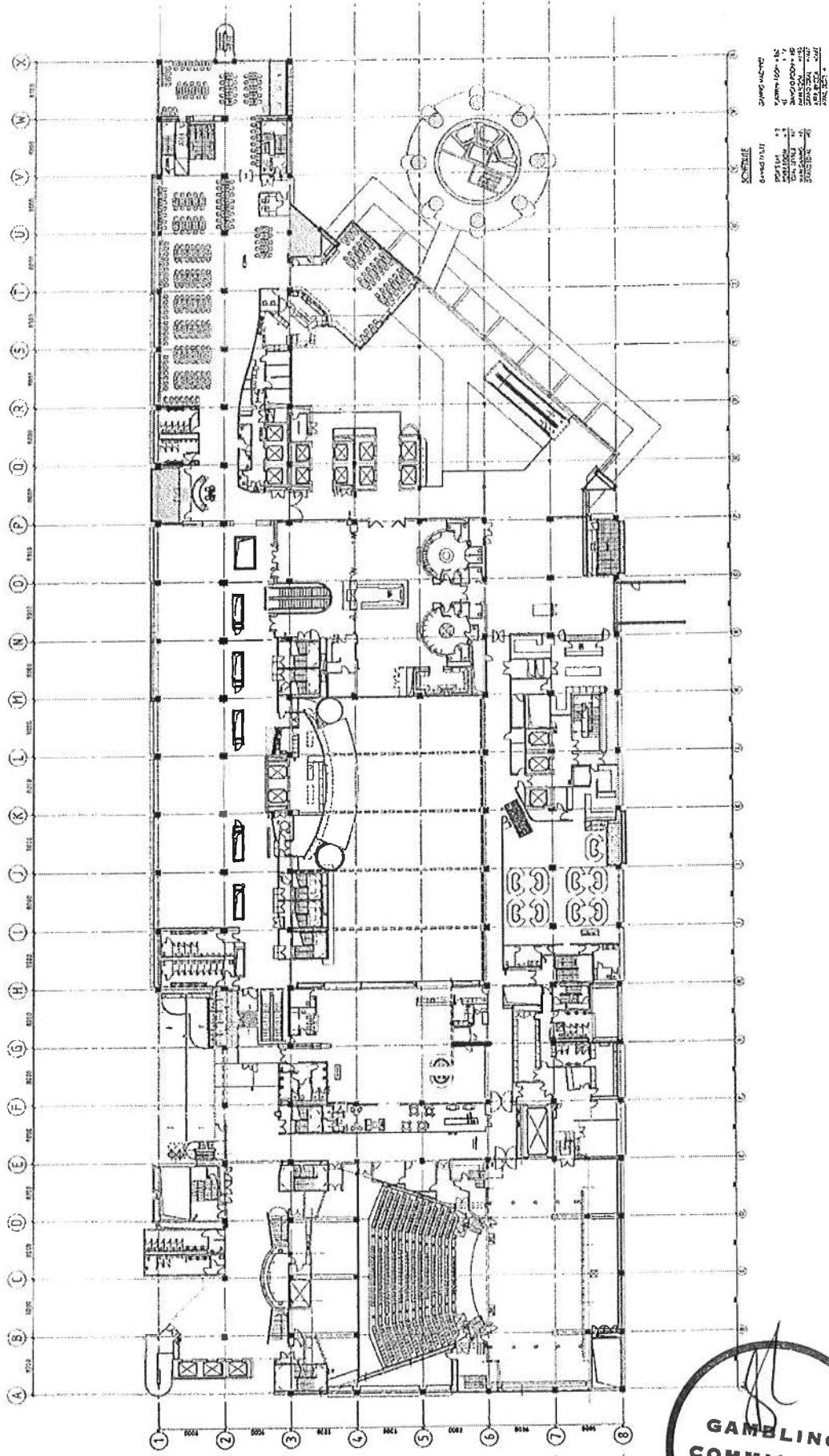
Call 404 9 257-0000  
Fax 404 9 257-0002  
Send to your shop  
for more info  
PO Box 188-200  
Atlanta, GA 30304  
www.fox.com/atlanta

**moller:** Moller Architects®


**SKY CITY**  
 ENTERTAINMENT GROUP  
 GAMING LAYOUTS  
 Sky City Entertainment Group

Level 2 Gaming Layout  
SKYCITY - Gaming Machine  
Hotel 5 North Transfer  
11/08/2011  
STAGE 1





Project Name	SKYCITY - Level 3 Gaming Layout
Project No.	5132C
Revision No.	A1205
Revision Date	11/09/2011
Revision Description	
Author	
Checker	
Engineer	
Scale	
Sheet No.	8

Level 3 Gaming Layout:  
SKYCITY - Sports Bar  
Gaming Table Placement  
11/09/2011

Project Name	SKYCITY - Level 3 Gaming Layout
Project No.	5132C
Revision No.	A1205
Revision Date	11/09/2011
Revision Description	
Author	
Checker	
Engineer	
Scale	
Sheet No.	8

Sky City Entertainment Group  
Gaming Layouts

**SKYCITY**  
ENTERTAINMENT GROUP

SKYCITY  
ENTERTAINMENT GROUP

**moller** Architects

AR = ROMETTE  
BT = BACKING  
CS = CARBONATED SINK  
MD = MDS, EXCESSIVE  
M<sub>2</sub> = M<sub>2</sub> GIN



**Moller Architects<sup>®</sup>**  
Call 414 9 287626  
Fax 414 9 257085  
1100 W. 15th Street  
PO Box 10000  
Milwaukee, WI 53233

**SKYCITY**  
LEVEL H4, H5 & H6  
New VIP Gaming for  
SkyCity

APPROVED  
Mark Walker

FINISHES  
H5 FURNITURE PLAN  
H5 NORTH

01 H5 PLAN - FURNITURE PLAN  
- 1:100 @ A1 1:200 @ A3

**GAMBLING  
COMMISSION**