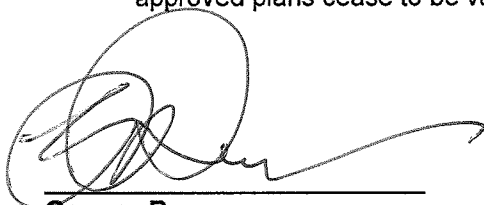


**DECISION UNDER DELEGATED AUTHORITY ON AN APPLICATION  
BY SKYCITY CASINO MANAGEMENT LIMITED FOR APPROVAL OF  
A NEW FLOOR PLAN FOR THE AUCKLAND CASINO**

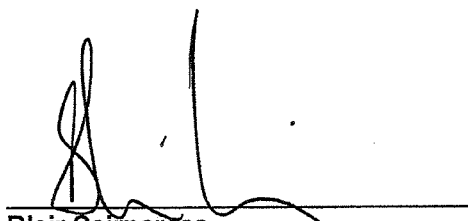
Date of Decision: 20<sup>th</sup> July 2011

1. On 18 July 2011, SKYCITY Casino Management Limited ("**SCML**") applied, pursuant to condition 11 of its operator's licence for the Auckland casino, for approval of a new floor plan, "August 2011".
2. The new Diamond Room is scheduled to open on 19 August 2011, with gaming machine installations commencing on 25 July 2011. SCML wants to install 182 gaming machines in the Diamond Room, with 86 machines being transferred from level 3 and 64 machines from level 2. The remainder of the machines will be new product.
3. The new floor plan, "August 2011", shows the location of machines in the Diamond Room and reflects the removal of machines from levels 2 and 3.
4. The application raises no issues the Commission needs to consider. Accordingly the new plan is approved by the Chief Gambling Commissioner and the Executive Director under delegated authority pursuant to condition 11 of SCML's operator's licence.
5. The new floor plan, "August 2011" is **attached**. Once reliant on this plan, all other approved plans cease to be valid.



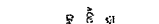
**Graeme Reeves**  
Chief Gambling Commissioner  
Gambling Commission

20<sup>th</sup> July 2011



**Blair Cairncross**  
Executive Director  
Gambling Commission

13  
ACE  
GPA



(X)                  (A)

180cm square

DATE	11/11/01
TIME	10:00
LOCATION	1000
NAME	1000
ADDRESS	1000
CITY	1000
STATE	1000
ZIP	1000
PHONE	1000
FAX	1000
EMAIL	1000
WEBSITE	1000
OTHER	1000

④

②

③

①

②

17

20

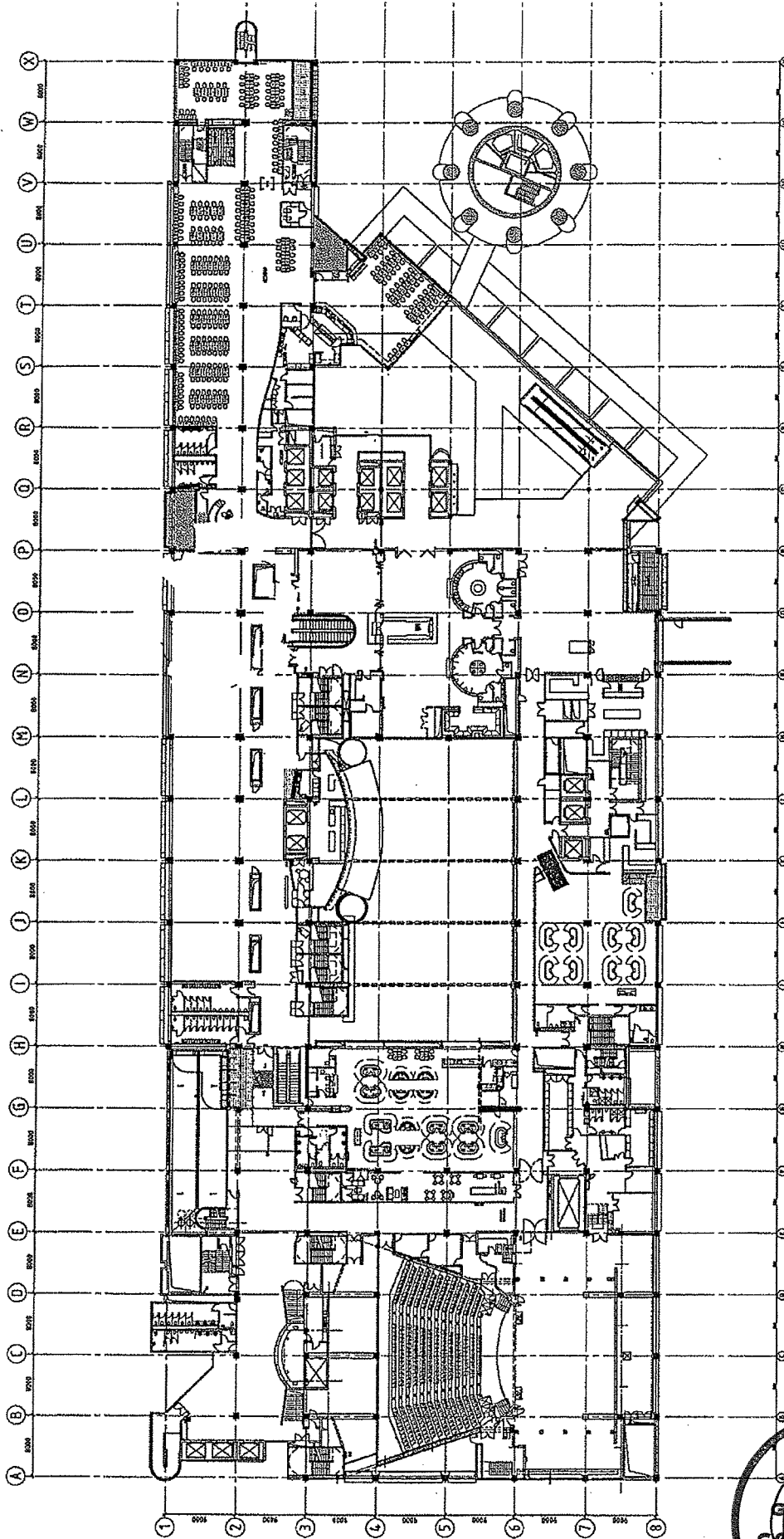
②

⑤

AMBLING

COMMISSION

August 2011



**SCHEDULE**

ITEM	DESCRIPTION	QUANTITY	UNIT	PRICE	TOTAL
1	PAUSE ROOM	1	SQ. FT.	100.00	100.00
2	PAUSE ROOM	1	SQ. FT.	100.00	100.00
3	PAUSE ROOM	1	SQ. FT.	100.00	100.00
4	PAUSE ROOM	1	SQ. FT.	100.00	100.00
5	PAUSE ROOM	1	SQ. FT.	100.00	100.00
6	PAUSE ROOM	1	SQ. FT.	100.00	100.00
7	PAUSE ROOM	1	SQ. FT.	100.00	100.00
8	PAUSE ROOM	1	SQ. FT.	100.00	100.00

**REVISIONS**

NO.	DATE	DESCRIPTION
1	10/20/10	ISSUED FOR PERMIT
2	10/20/10	ISSUED FOR PERMIT
3	10/20/10	ISSUED FOR PERMIT
4	10/20/10	ISSUED FOR PERMIT
5	10/20/10	ISSUED FOR PERMIT
6	10/20/10	ISSUED FOR PERMIT
7	10/20/10	ISSUED FOR PERMIT
8	10/20/10	ISSUED FOR PERMIT

**Level 3 Gaming Layout**  
**SKY CITY - Diamond Room**  
**Gaming Machine Removal**  
**14/07/2011**

**SKY CITY ENTERTAINMENT GROUP**  
**Gaming Layouts**

**SKY CITY**  
**ENTERTAINMENT GROUP**

**SKY CITY**  
**ENTERTAINMENT GROUP**

**SKY CITY**  
**ENTERTAINMENT GROUP**

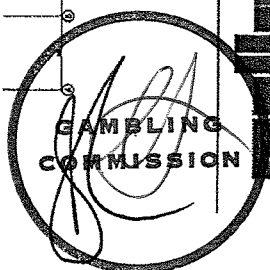
**SKY CITY**  
**ENTERTAINMENT GROUP**

**SKY CITY**  
**ENTERTAINMENT GROUP**

**SKY CITY**  
**ENTERTAINMENT GROUP**

**SKY CITY**  
**ENTERTAINMENT GROUP**

**SKY CITY**  
**ENTERTAINMENT GROUP**



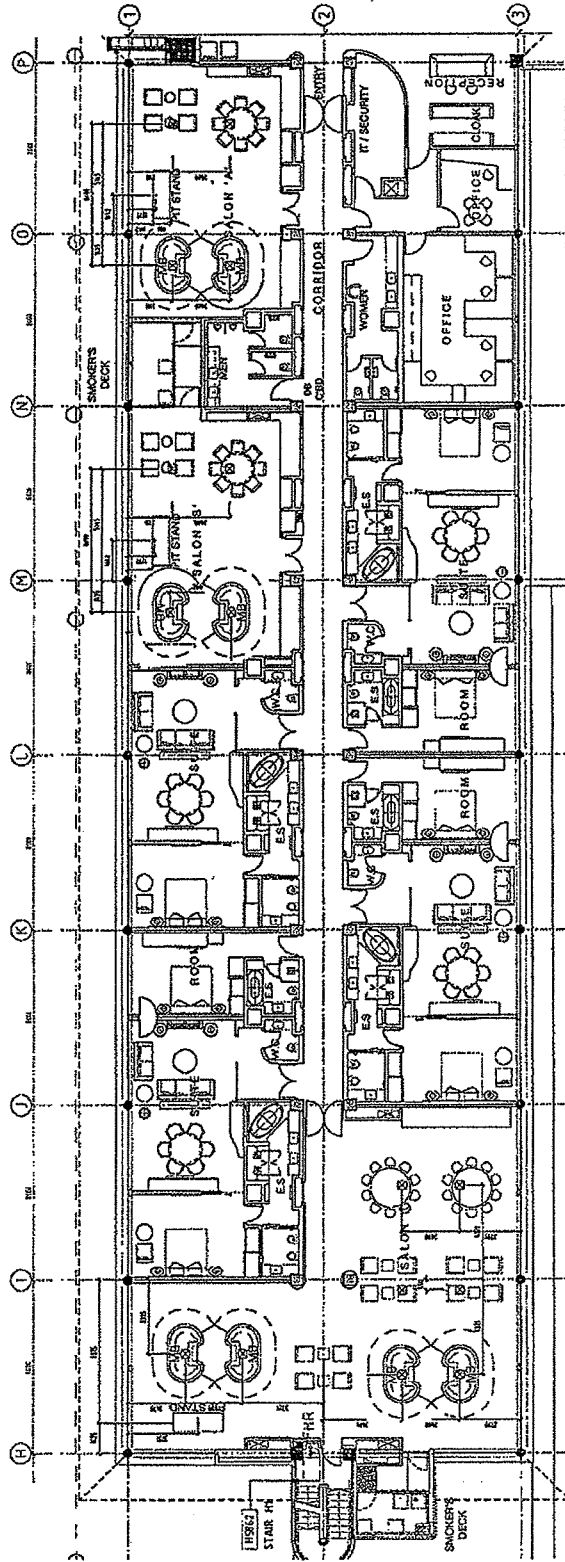
**SKY CITY**  
**ENTERTAINMENT GROUP**

August 2011



**SKY CITY**  
 LEVEL H4, H5 & H6  
 SKY CITY New York Gaming for  
 SkyCity

REVISIONS		DATE	BY	CHK	APP
1	ISSUED FOR PERMIT	08/01/11	MM	MM	MM
2	REVISION				
3	REVISION				
4	REVISION				
5	REVISION				
6	REVISION				
7	REVISION				
8	REVISION				
9	REVISION				
10	REVISION				
11	REVISION				
12	REVISION				
13	REVISION				
14	REVISION				
15	REVISION				
16	REVISION				
17	REVISION				
18	REVISION				
19	REVISION				
20	REVISION				
21	REVISION				
22	REVISION				
23	REVISION				
24	REVISION				
25	REVISION				
26	REVISION				
27	REVISION				
28	REVISION				
29	REVISION				
30	REVISION				
31	REVISION				
32	REVISION				
33	REVISION				
34	REVISION				
35	REVISION				
36	REVISION				
37	REVISION				
38	REVISION				
39	REVISION				
40	REVISION				
41	REVISION				
42	REVISION				
43	REVISION				
44	REVISION				
45	REVISION				
46	REVISION				
47	REVISION				
48	REVISION				
49	REVISION				
50	REVISION				
51	REVISION				
52	REVISION				
53	REVISION				
54	REVISION				
55	REVISION				
56	REVISION				
57	REVISION				
58	REVISION				
59	REVISION				
60	REVISION				
61	REVISION				
62	REVISION				
63	REVISION				
64	REVISION				
65	REVISION				
66	REVISION				
67	REVISION				
68	REVISION				
69	REVISION				
70	REVISION				
71	REVISION				
72	REVISION				
73	REVISION				
74	REVISION				
75	REVISION				
76	REVISION				
77	REVISION				
78	REVISION				
79	REVISION				
80	REVISION				
81	REVISION				
82	REVISION				
83	REVISION				
84	REVISION				
85	REVISION				
86	REVISION				
87	REVISION				
88	REVISION				
89	REVISION				
90	REVISION				
91	REVISION				
92	REVISION				
93	REVISION				
94	REVISION				
95	REVISION				
96	REVISION				
97	REVISION				
98	REVISION				
99	REVISION				
100	REVISION				



**H5 SOUTH FURNITURE SETOUT**  
 1/8" = 1'-0" @ A1  
 1/16" = 1'-0" @ A3

