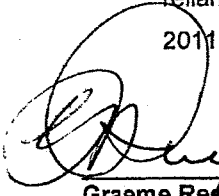


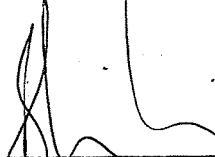
**DECISION UNDER DELEGATED AUTHORITY ON AN APPLICATION
BY SKYCITY CASINO MANAGEMENT LIMITED FOR APPROVAL
OF TWO NEW FLOOR PLANS FOR THE AUCKLAND CASINO**

Date of Decision: 22 June 2011

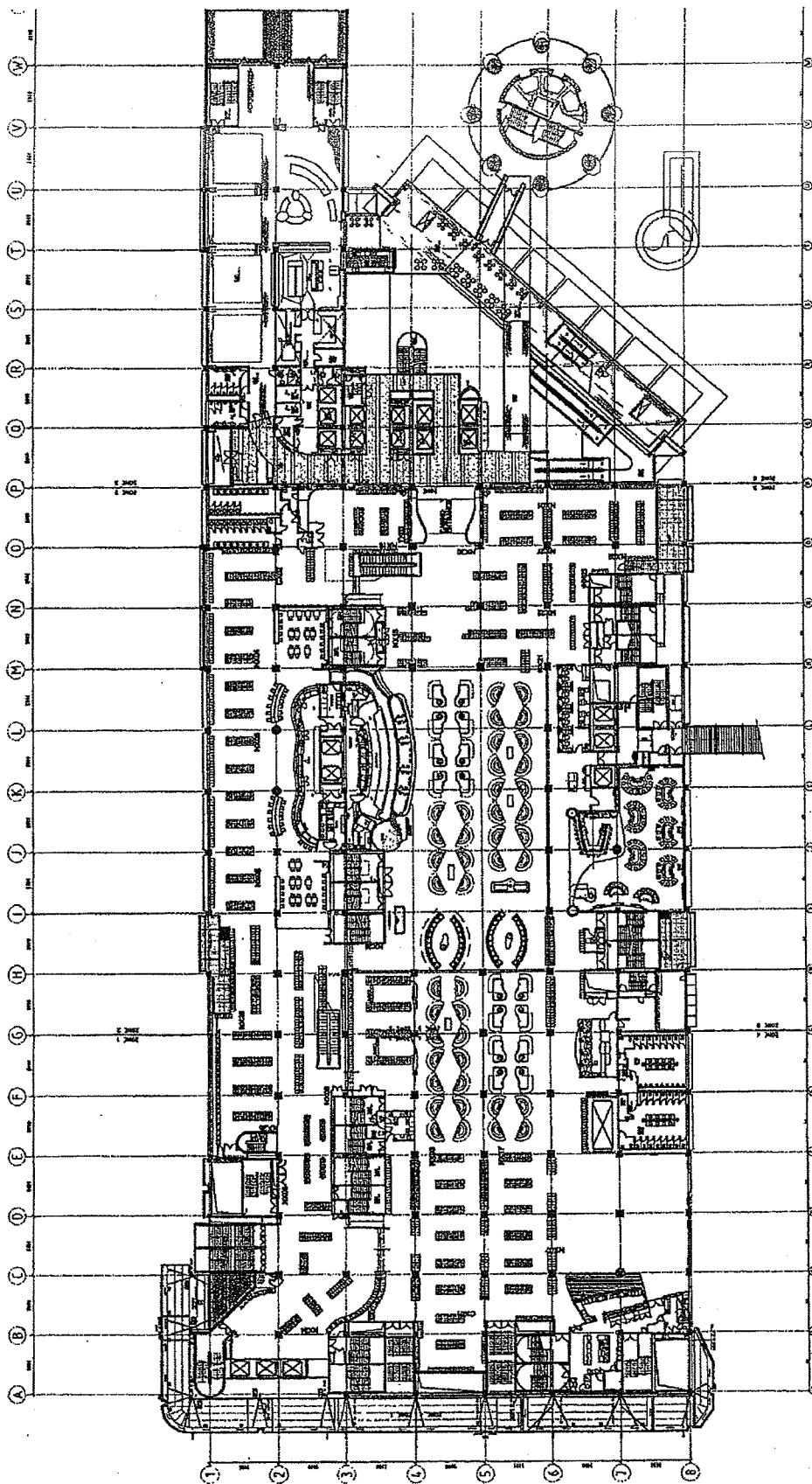
1. On 21 June 2011, SKYCITY Casino Management Limited ("SCML") applied, pursuant to condition 11 of its operator's licence for the Auckland casino, for approval of two new floor plans, "July 2011" and "July 2011 Ver. 2". SCML is currently reliant on "May 2011 Ver. 3" and "Platinum Stage 14 Temporary".
2. On or around 4 July 2011, SCML wants to remove the eight Poker tables from the Poker Zone, the six Black Jack tables at the northern end of the Poker Zone, and the six tables in the International Room. The gaming machines located in and around the Poker Zone will be relocated to the area left vacant by the removal of the six Black Jack tables. The Poker Zone will be relocated to the International Room, with an additional Poker table also being installed. Pending the opening of the international salons on level 5, the number of tables on the floor will reduce to 98. This reconfiguration will enable SCML to commence the necessary work on level 3 in preparation for the relocation of Fortuna Restaurant. SCML sought approval of floor plans depicting these movements.
3. On or around 15 July 2011, SCML will open the three international salons on level 5 of the casino. These salons will house eight tables. SCML sought approval of floor plans depicting these movements.
4. The application raises no issues the Commission needs to consider. Accordingly the application is approved by the Chief Gambling Commissioner and the Executive Director under delegated authority pursuant to condition 11 of SCML's operator's licence. Floor plans "July 2011" and "July 2011 Ver. 2" are attached.
5. "May 2011 Ver. 3" and Platinum Stage 14 Temporary" cease to be valid once SCML is reliant on "July 2011". "July 2011" ceases to be valid once SCML is fully reliant on "July 2011 Ver. 2".


Graeme Reeves
Chief Gambling Commissioner
Gambling Commission

22 June 2011


Blair Cairncross
Executive Director
Gambling Commission

July 2011



SCHEDULE		COUNCIL MEETINGS		COUNCIL MEETINGS	
PAW	= 17	TRIN	= 17	TRIN	= 17
PACIFIC	= 14	TRIN	= 14	TRIN	= 14
NEW YORK	= 9	TRIN	= 9	TRIN	= 9
CHICAGO	= 8	TRIN	= 8	TRIN	= 8
LOS ANGELES	= 7	TRIN	= 7	TRIN	= 7
PHILADELPHIA	= 6	TRIN	= 6	TRIN	= 6
BOSTON	= 5	TRIN	= 5	TRIN	= 5
ST. LOUIS	= 4	TRIN	= 4	TRIN	= 4
MEMPHIS	= 3	TRIN	= 3	TRIN	= 3
HOUSTON	= 2	TRIN	= 2	TRIN	= 2
DALLAS	= 1	TRIN	= 1	TRIN	= 1

[illegible]

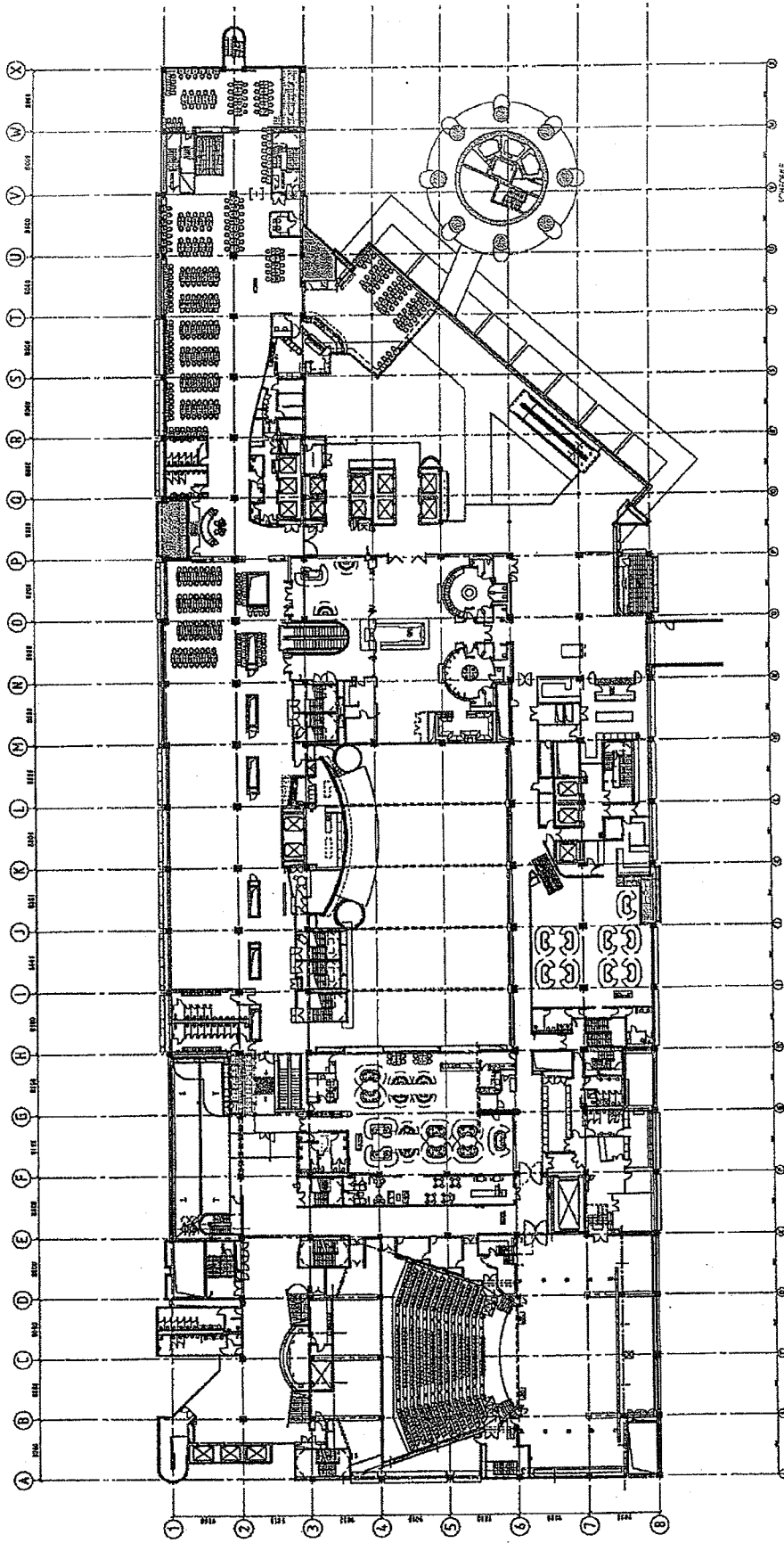
Call 454 9 2570060
Fax 454 9 2570060

Architects

Mod. Arc.

BLING

July 2011



SCHEDULE	
SKYCITY	1
SKYCITY	2
SKYCITY	3
SKYCITY	4
SKYCITY	5
SKYCITY	6
SKYCITY	7
SKYCITY	8
SKYCITY	9
SKYCITY	10

SCHEDULE	
SKYCITY	1
SKYCITY	2
SKYCITY	3
SKYCITY	4
SKYCITY	5
SKYCITY	6
SKYCITY	7
SKYCITY	8
SKYCITY	9
SKYCITY	10

SCHEDULE	
SKYCITY	1
SKYCITY	2
SKYCITY	3
SKYCITY	4
SKYCITY	5
SKYCITY	6
SKYCITY	7
SKYCITY	8
SKYCITY	9
SKYCITY	10

SCHEDULE	
SKYCITY	1
SKYCITY	2
SKYCITY	3
SKYCITY	4
SKYCITY	5
SKYCITY	6
SKYCITY	7
SKYCITY	8
SKYCITY	9
SKYCITY	10

SCHEDULE	
SKYCITY	1
SKYCITY	2
SKYCITY	3
SKYCITY	4
SKYCITY	5
SKYCITY	6
SKYCITY	7
SKYCITY	8
SKYCITY	9
SKYCITY	10



Moller Architects

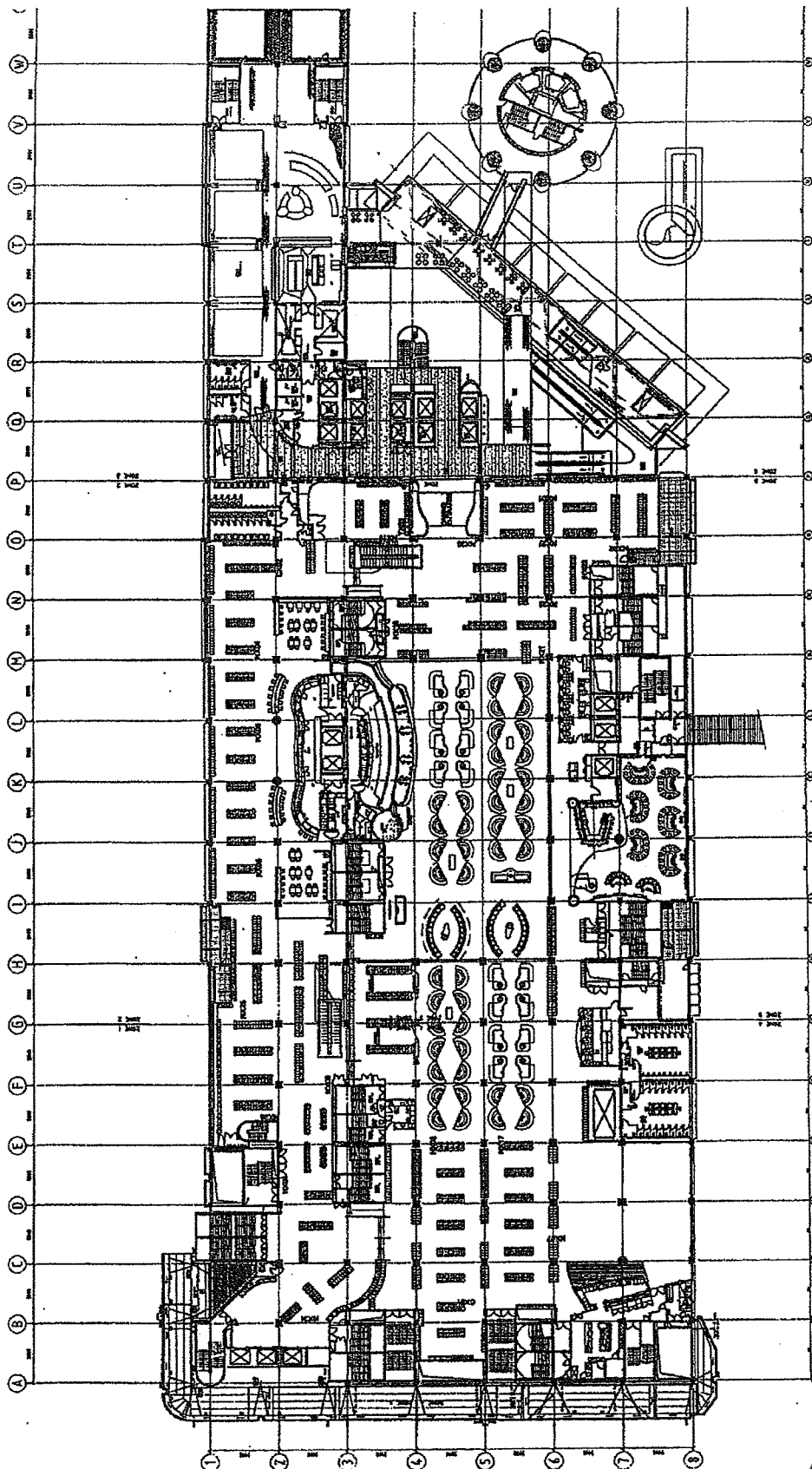
SKYCITY

Sky City Entertainment Group
Gaming Layouts

SKYCITY
Fortuna Stage 2 DIA 4/07/2011

SKYCITY
Level 3 Gaming Layout

SKYCITY
A1205



SCHEDULE

ITEM	QUANTITY	UNIT	DESCRIPTION
1.0	1.0	sq. ft.	Slot Machine
2.0	1.0	sq. ft.	Table Game
3.0	1.0	sq. ft.	Bar/Lounge
4.0	1.0	sq. ft.	Restroom
5.0	1.0	sq. ft.	Staircase
6.0	1.0	sq. ft.	Elevator
7.0	1.0	sq. ft.	Reception
8.0	1.0	sq. ft.	Security
9.0	1.0	sq. ft.	Storage
10.0	1.0	sq. ft.	Office
11.0	1.0	sq. ft.	Janitor
12.0	1.0	sq. ft.	Other

REVISIONS

NO.	DATE	DESCRIPTION
1	07/01/11	Initial Design
2	07/01/11	Revised Design
3	07/01/11	Final Design

PROJECT TITLE
Level 2 Gaming Layout
SKY CITY
DA 12 Diamond Room Hoarding | 5132C | 1202 M

REVISIONS

NO.	DATE	DESCRIPTION
1	07/01/11	Initial Design
2	07/01/11	Revised Design
3	07/01/11	Final Design

PROJECT TITLE
Level 2 Gaming Layout
SKY CITY
DA 12 Diamond Room Hoarding | 5132C | 1202 M

REVISIONS

NO.	DATE	DESCRIPTION
1	07/01/11	Initial Design
2	07/01/11	Revised Design
3	07/01/11	Final Design

PROJECT TITLE
Level 2 Gaming Layout
SKY CITY
DA 12 Diamond Room Hoarding | 5132C | 1202 M

REVISIONS

NO.	DATE	DESCRIPTION
1	07/01/11	Initial Design
2	07/01/11	Revised Design
3	07/01/11	Final Design

PROJECT TITLE
Level 2 Gaming Layout
SKY CITY
DA 12 Diamond Room Hoarding | 5132C | 1202 M



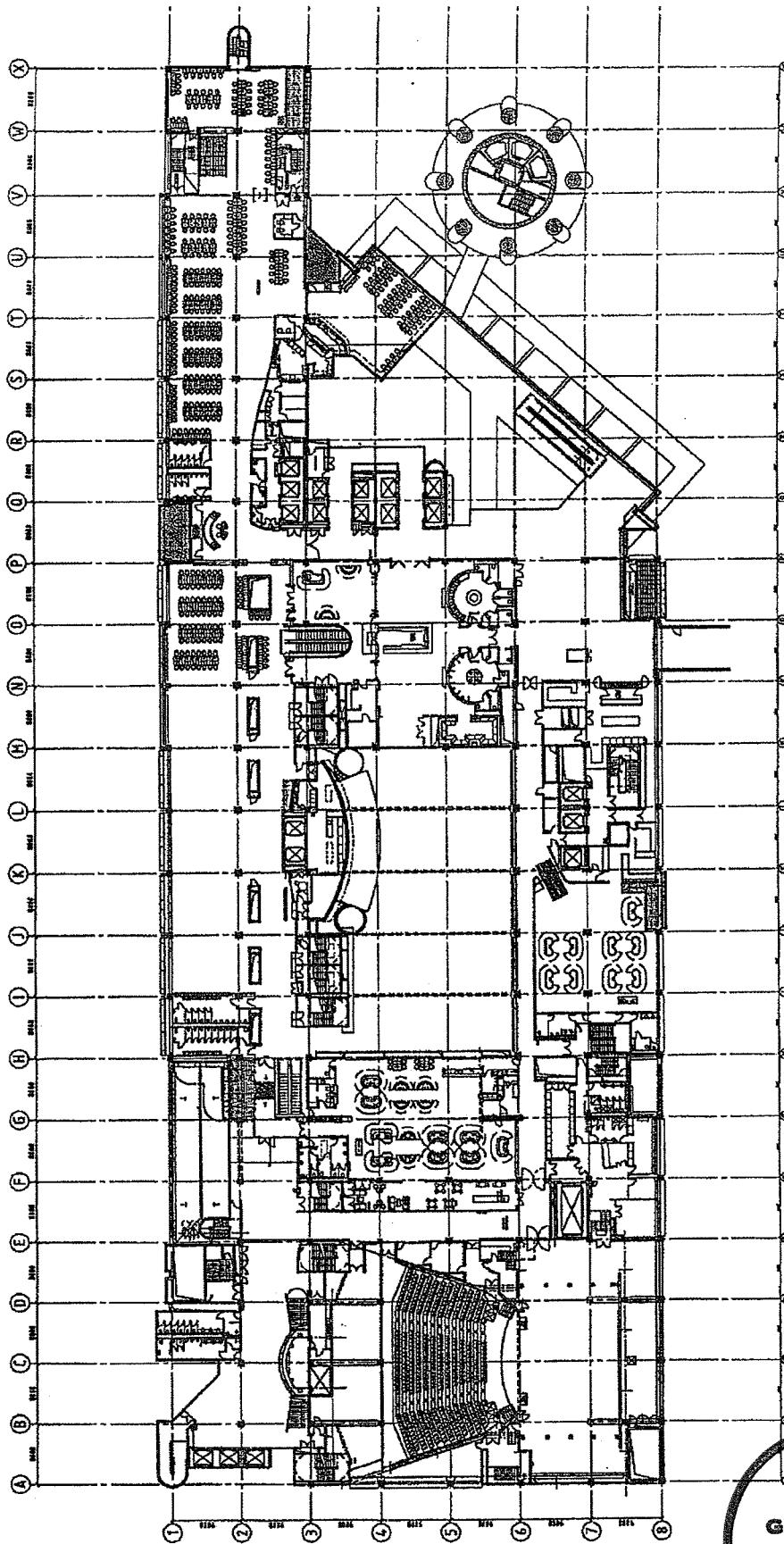
Moller Architects
Architects

SKY CITY
Entertainment Group
Gaming Layouts

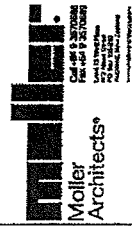
SKY CITY
Entertainment Group
Gaming Layouts

SKY CITY
Entertainment Group
Gaming Layouts

**GAMBLING
COMMISSION**

[illegible]

July 2011 Ver. 2



SKY CITY
 LEVEL H4, H5 & H6
 SkyCity Nightclub Gaming for
 SkyCity

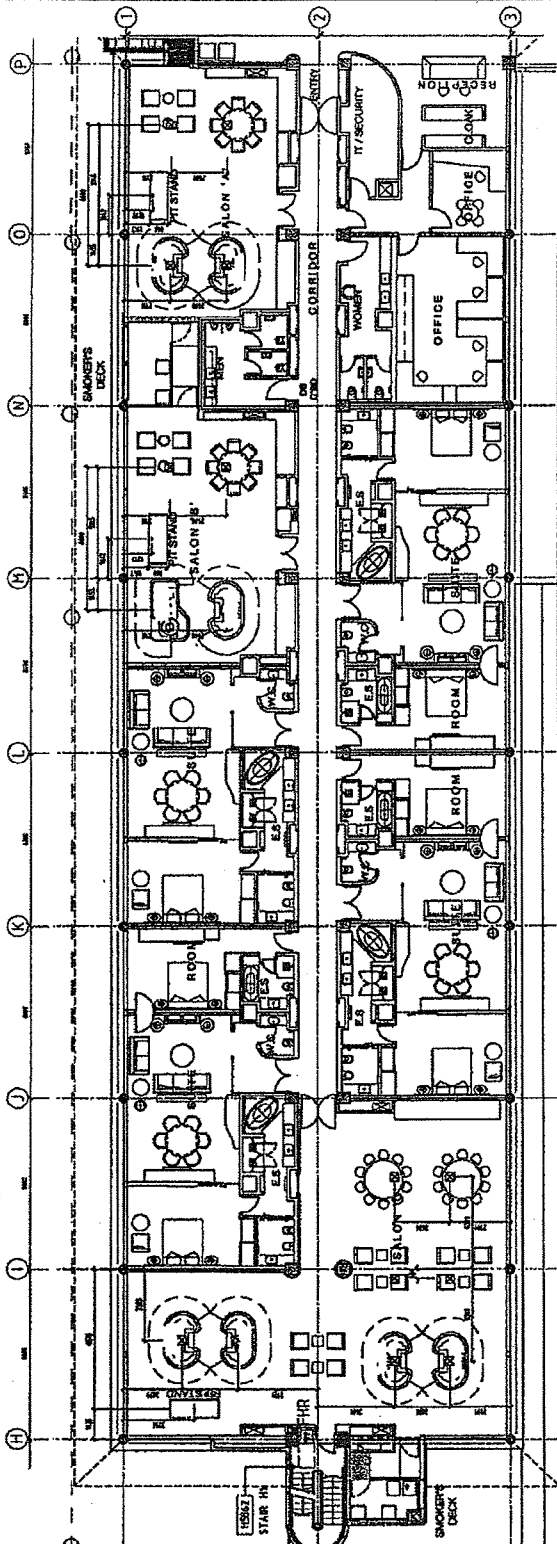
SKY CITY
 LEVEL H4, H5 & H6
 SkyCity Nightclub Gaming for
 SkyCity

SKY CITY
 LEVEL H4, H5 & H6
 SkyCity Nightclub Gaming for
 SkyCity

SKY CITY
 LEVEL H4, H5 & H6
 SkyCity Nightclub Gaming for
 SkyCity

SKY CITY
 LEVEL H4, H5 & H6
 SkyCity Nightclub Gaming for
 SkyCity

SKY CITY
 LEVEL H4, H5 & H6
 SkyCity Nightclub Gaming for
 SkyCity



102 H5 SOUTH FURNITURE SETOUT
 1/8" = 1'-0" @ A1
 1/2" = 1'-0" @ A3

