

**DECISION UNDER DELEGATED AUTHORITY ON AN APPLICATION  
BY SKYCITY CASINO MANAGEMENT LIMITED FOR APPROVAL  
OF NEW FLOOR PLANS FOR THE AUCKLAND CASINO**

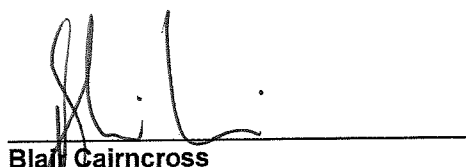
**Date of Decision:** 9 May 2011

1. On 6 May 2011, SKYCITY Casino Management Limited ("**SCML**") applied, pursuant to condition 11 of its operator's licence for the Auckland casino, for approval of new temporary floor plans, "Platinum Stage 13 Temporary" and "Platinum Stage 14 Temporary".
2. SCML is currently reliant on "Platinum Stage 12 Temporary" and seeks approval of the new temporary floor plans to allow it to continue with its refurbishment of the Platinum Room. "Platinum Stage 3 Temporary" relocates 22 gaming machines from the bar/lounge area to other parts of the Platinum Room and removes a number of other machines from the floor temporarily. "Platinum Stage 14 Temporary" relocates gaming machines to the Platinum Room's bar area.
3. The application raises no issues the Commission needs to consider. Accordingly the application is approved by the Chief Gambling Commissioner and the Executive Director under delegated authority pursuant to condition 11 of SCML's operator's licence. Floor plans "Platinum Stage 13 Temporary" and "Platinum Stage 14 Temporary" are **attached**.
4. "Platinum Stage 12 Temporary" ceases to be valid once SCML is fully reliant on "Platinum Stage 13 Temporary" and "Platinum Stage 13 Temporary" ceases to be valid once SCML is fully reliant on "Platinum Stage 14 Temporary".

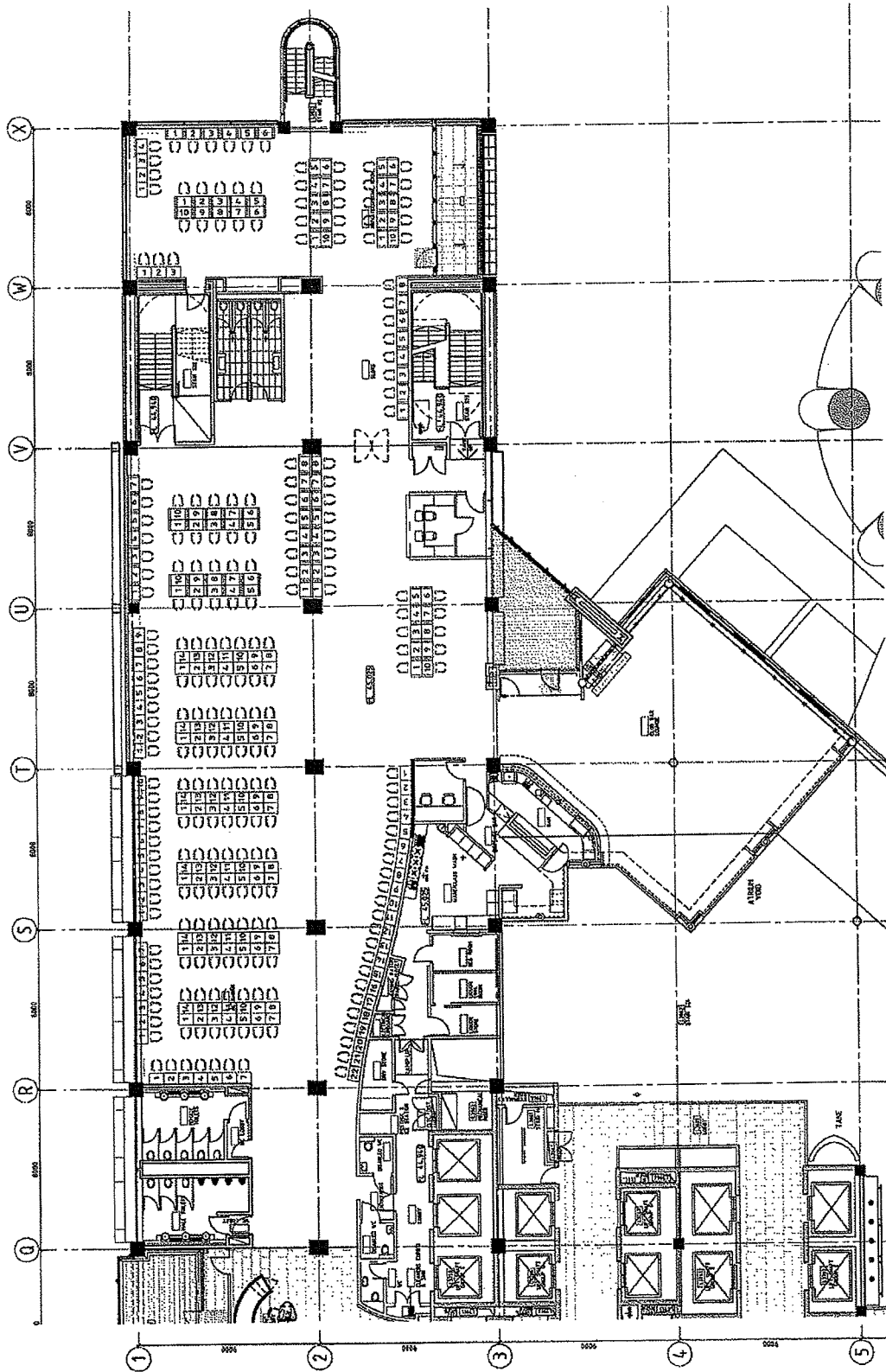


**Graeme Reeves**  
Chief Gambling Commissioner  
Gambling Commission

9 May 2011



**Blair Cairncross**  
Executive Director  
Gambling Commission



<b>SKYCITY</b> INTERIM GAMING LAYOUT		<b>SKY CITY Entertainment Group</b> Gaming Layouts		5132C	
05/05/2011 10M(g) - 05/05/2011		Level 3 Gaming Layout SKYCITY Platinum Room		5132C	
* Refer to Section 1 for Object Symbols Note: Contractor shall verify all dimensions before commencing work. This drawing shall be used for construction purposes only. Copyright © 2011 Sky City Entertainment Group		DRAWING TITLE Level 3 Gaming Layout SKYCITY Platinum Room		5132C	
SCALE: 1/8" = 1'-0" DATE: 05/05/2011 BY: [Signature] CHECKED: [Signature] APPROVED: [Signature]		DRAWING INFORMATION Project Name: SKYCITY Project No: 5132C Date: 05/05/2011 Scale: 1/8" = 1'-0" File Name: 5132C.dwg		REVISIONS No. Description 1 Initial 2 Initial 3 Initial 4 Initial 5 Initial	

[illegible]

Level 3 Gaming Layout  
SKYCITY  
Platinum Room  
10N - 05/05/2011

REVISION		By		Date	
1	1	1	1	1	1
2	2	2	2	2	2
3	3	3	3	3	3
4	4	4	4	4	4
5	5	5	5	5	5
6	6	6	6	6	6
7	7	7	7	7	7
8	8	8	8	8	8
9	9	9	9	9	9
10	10	10	10	10	10
11	11	11	11	11	11
12	12	12	12	12	12
13	13	13	13	13	13
14	14	14	14	14	14
15	15	15	15	15	15
16	16	16	16	16	16
17	17	17	17	17	17
18	18	18	18	18	18
19	19	19	19	19	19
20	20	20	20	20	20
21	21	21	21	21	21
22	22	22	22	22	22
23	23	23	23	23	23
24	24	24	24	24	24
25	25	25	25	25	25
26	26	26	26	26	26
27	27	27	27	27	27
28	28	28	28	28	28
29	29	29	29	29	29
30	30	30	30	30	30
31	31	31	31	31	31
32	32	32	32	32	32
33	33	33	33	33	33
34	34	34	34	34	34
35	35	35	35	35	35
36	36	36	36	36	36
37	37	37	37	37	37
38	38	38	38	38	38
39	39	39	39	39	39
40	40	40	40	40	40
41	41	41	41	41	41
42	42	42	42	42	42
43	43	43	43	43	43
44	44	44	44	44	44
45	45	45	45	45	45
46	46	46	46	46	46
47	47	47	47	47	47
48	48	48	48	48	48
49	49	49	49	49	49
50	50	50	50	50	50
51	51	51	51	51	51
52	52	52	52	52	52
53	53	53	53	53	53
54	54	54	54	54	54
55	55	55	55	55	55
56	56	56	56	56	56
57	57	57	57	57	57
58	58	58	58	58	58
59	59	59	59	59	59
60	60	60	60	60	60
61	61	61	61	61	61
62	62	62	62	62	62
63	63	63	63	63	63
64	64	64	64	64	64
65	65	65	65	65	65
66	66	66	66	66	66
67	67	67	67	67	67
68	68	68	68	68	68
69	69	69	69	69	69
70	70	70	70	70	70
71	71	71	71	71	71
72	72	72	72	72	72
73	73	73	73	73	73
74	74	74	74	74	74
75	75	75	75	75	75

6132C	6132C
-------	-------

