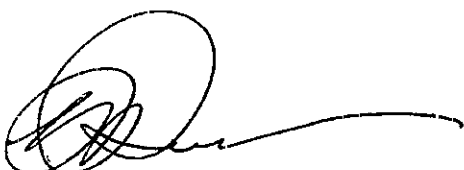


**DECISION UNDER DELEGATED AUTHORITY ON AN APPLICATION
BY SKYCITY CASINO MANAGEMENT LIMITED FOR APPROVAL
OF NEW FLOOR PLANS FOR THE AUCKLAND CASINO**

Date of Decision: 24 February 2011

- 1 On 24 February 2011, SKYCITY Casino Management Limited ("SCML") applied, pursuant to condition 11 of its operator's licence for the Auckland casino, for approval of new temporary floor plans, "Platinum Stage 9 Temporary" and "Platinum Stage 10 Temporary"
- 2 SCML is currently reliant on "Platinum Stage 8 Temporary" and seeks approval of the new temporary floor plans to allow it to continue with its refurbishment of the Platinum Room. The proposed floor plans relocate a number of gaming machines within the Platinum Room.
- 3 The application raises no issues the Commission needs to consider. Accordingly the application is approved by the Chief Gambling Commissioner and the Executive Director under delegated authority pursuant to condition 11 of SCML's operator's licence. Floor plans "Platinum Stage 9 Temporary" and "Platinum Stage 10 Temporary" (attached) are approved.
- 4 Floor plan "Platinum Stage 8 Temporary" ceases to be valid once SCML is fully reliant on "Platinum Stage 9 Temporary" and "Platinum Stage 10 Temporary"



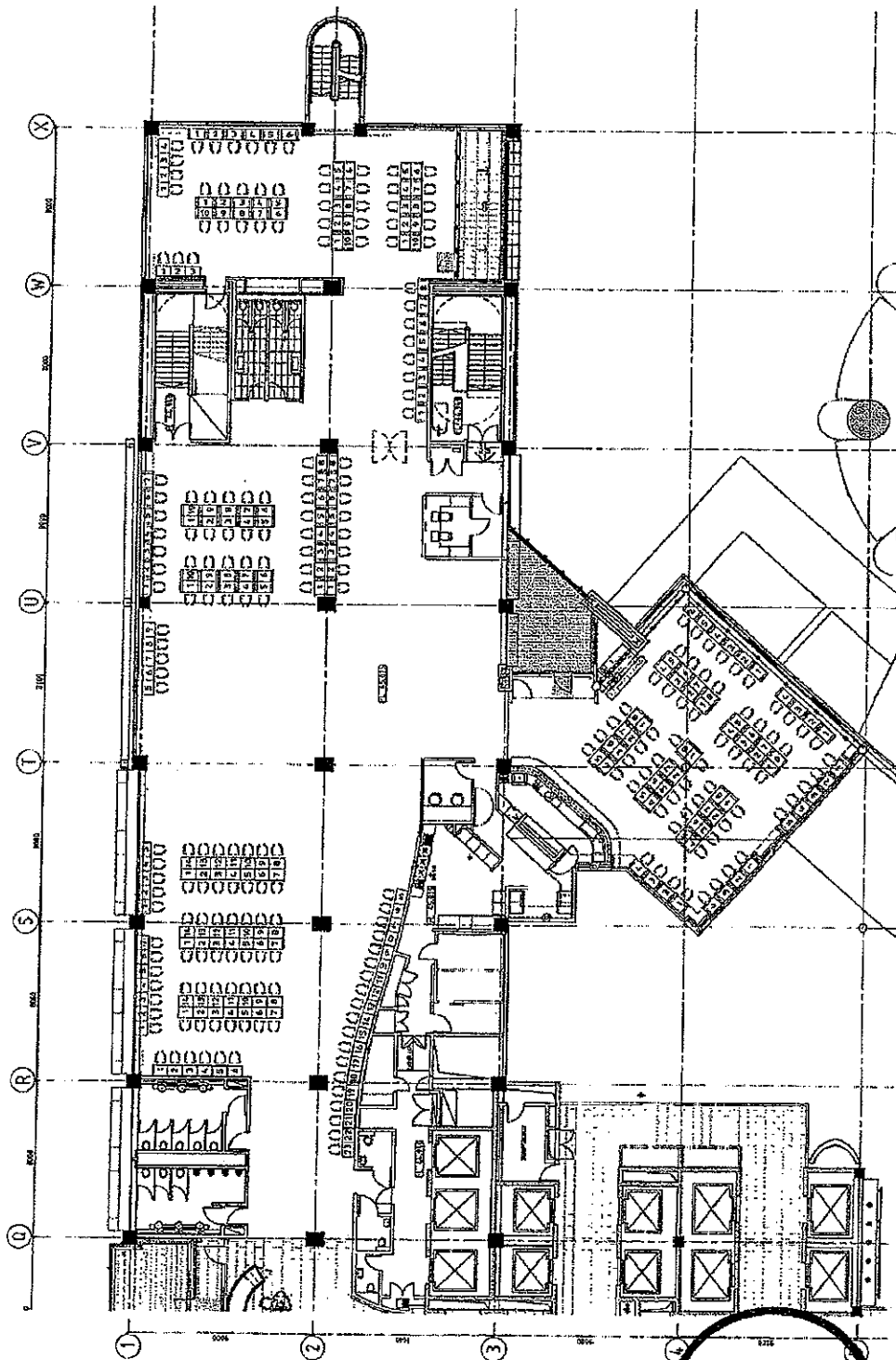
Graeme Reeves
Chief Gambling Commissioner
Gambling Commission



Blair Cairncross
Executive Director
Gambling Commission

24 February 2011

5192C
JOB NO.
CRAWFORD RD.
NEW YORK
DATE
BY
APPROVED BY
SUPERVISOR



**GAMBLING
COMMISSION**

Moller Architects

ALLIANCE

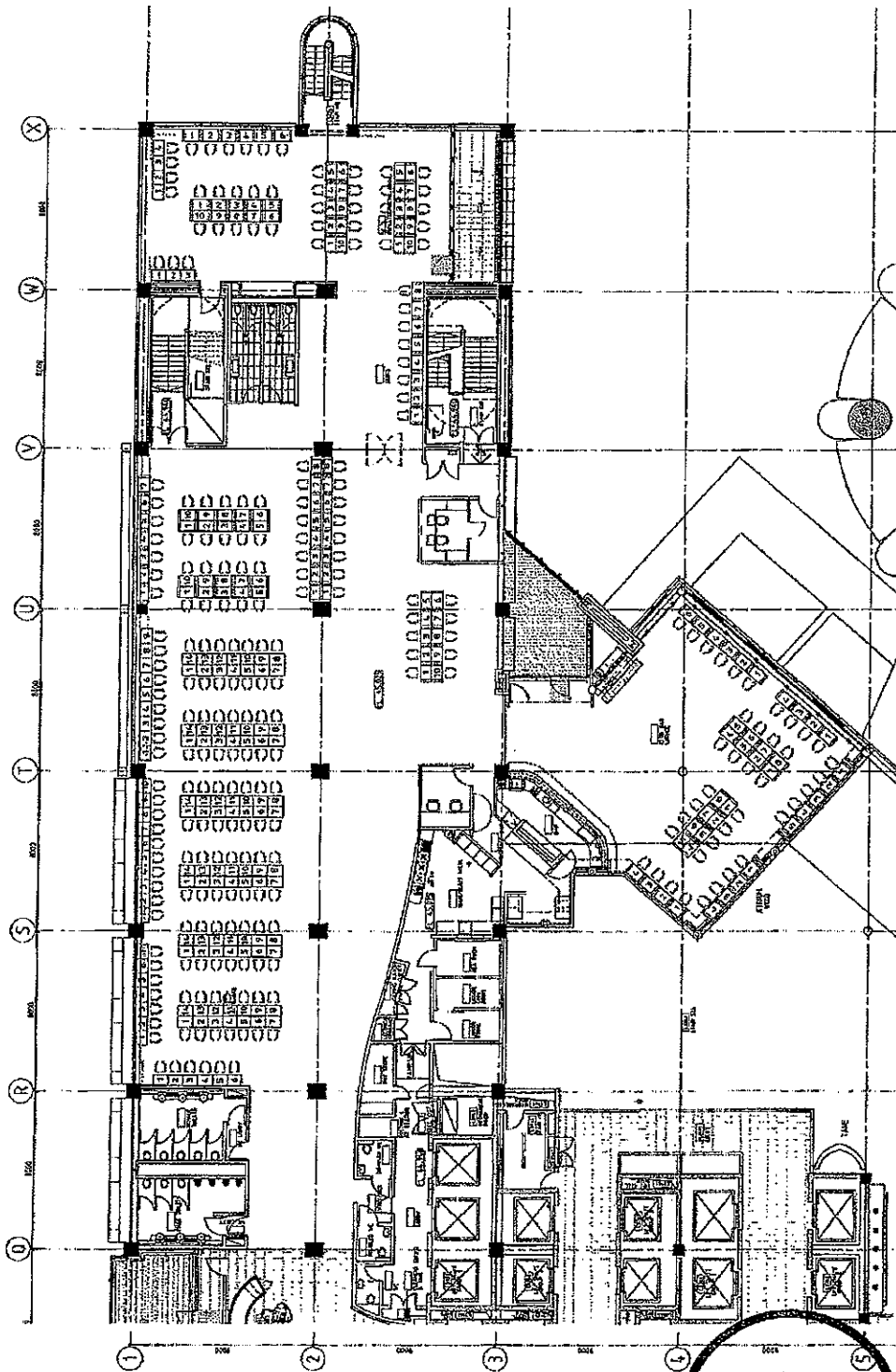
**Sky City Entertainment Group
Gaming Layouts**

561891 AND PHONES

[illegible]

Level 3 Gaming Layout
SKYCITY
Platinum Room
101 - 11/02/2011

**GAMBLING
COMMISSION**



REGISTRATION		DATE		TIME		PLACE		REMARKS	
No.	Name	Day	Month	Year	Hour	Minute	Place	Remarks	
1	John Doe	15	10	1980	10	30	Room 101	Arrived on time	
2	Jane Smith	15	10	1980	11	00	Room 101	Arrived on time	
3	Bob Johnson	15	10	1980	11	15	Room 101	Arrived on time	
4	Alice Brown	15	10	1980	11	30	Room 101	Arrived on time	
5	Charlie White	15	10	1980	11	45	Room 101	Arrived on time	
6	Diana Green	15	10	1980	12	00	Room 101	Arrived on time	
7	Frank Black	15	10	1980	12	15	Room 101	Arrived on time	
8	Grace King	15	10	1980	12	30	Room 101	Arrived on time	
9	Henry Lee	15	10	1980	12	45	Room 101	Arrived on time	
10	Ivy Clark	15	10	1980	13	00	Room 101	Arrived on time	
11	Jack Hall	15	10	1980	13	15	Room 101	Arrived on time	
12	Karen Young	15	10	1980	13	30	Room 101	Arrived on time	
13	Larry King	15	10	1980	13	45	Room 101	Arrived on time	
14	Mary Scott	15	10	1980	14	00	Room 101	Arrived on time	
15	Nathan Adams	15	10	1980	14	15	Room 101	Arrived on time	
16	Olivia Baker	15	10	1980	14	30	Room 101	Arrived on time	
17	Peter Carter	15	10	1980	14	45	Room 101	Arrived on time	
18	Quinn Evans	15	10	1980	15	00	Room 101	Arrived on time	
19	Rachel Foster	15	10	1980	15	15	Room 101	Arrived on time	
20	Samuel Green	15	10	1980	15	30	Room 101	Arrived on time	
21	Tina Hall	15	10	1980	15	45	Room 101	Arrived on time	
22	Umar King	15	10	1980	16	00	Room 101	Arrived on time	
23	Victoria Lee	15	10	1980	16	15	Room 101	Arrived on time	
24	Walter Scott	15	10	1980	16	30	Room 101	Arrived on time	
25	Xavier Adams	15	10	1980	16	45	Room 101	Arrived on time	
26	Yara Baker	15	10	1980	17	00	Room 101	Arrived on time	
27	Zoe Carter	15	10	1980	17	15	Room 101	Arrived on time	
28	Adam Evans	15	10	1980	17	30	Room 101	Arrived on time	
29	Bella Foster	15	10	1980	17	45	Room 101	Arrived on time	
30	Carl Green	15	10	1980	18	00	Room 101	Arrived on time	
31	Dora Hall	15	10	1980	18	15	Room 101	Arrived on time	
32	Ethan King	15	10	1980	18	30	Room 101	Arrived on time	
33	Fiona Lee	15	10	1980	18	45	Room 101	Arrived on time	
34	Gavin Scott	15	10	1980	19	00	Room 101	Arrived on time	
35	Hannah Adams	15	10	1980	19	15	Room 101	Arrived on time	
36	Ian Baker	15	10	1980	19	30	Room 101	Arrived on time	
37	Julia Carter	15	10	1980	19	45	Room 101	Arrived on time	
38	Kyle Evans	15	10	1980	20	00	Room 101	Arrived on time	
39	Laura Foster	15	10	1980	20	15	Room 101	Arrived on time	
40	Mark Green	15	10	1980	20	30	Room 101	Arrived on time	
41	Nancy Hall	15	10	1980	20	45	Room 101	Arrived on time	
42	Oscar King	15	10	1980	21	00	Room 101	Arrived on time	
43	Pamela Lee	15	10	1980	21	15	Room 101	Arrived on time	
44	Quinn Scott	15	10	1980	21	30	Room 101	Arrived on time	
45	Rachel Adams	15	10	1980	21	45	Room 101	Arrived on time	
46	Samuel Baker	15	10	1980	22	00	Room 101	Arrived on time	

GAMING TIME
Level 3 Gaming Layout
SKYCITY
Platinum Room
10/ - 11/03/2014

Order by Mail from The Original Synthesizer
 1000 University Ave., Suite 100, Berkeley, CA 94702
 This money will be used to support the development of new
 products and services. Copyright © 1994, Original Synthesizer, Inc.

SERIAL INFORMATION	
Sample	Print Type (S) 220
Printer	Model Date Out Mail
Eng. No. 1	Approved for Construction
Eng. No. 2	By
Eng. No. 3	
Eng. No. 4	
Eng. No. 5	
Eng. No. 6	
Eng. No. 7	
Eng. No. 8	
Eng. No. 9	
Eng. No. 10	
Eng. No. 11	
Eng. No. 12	
Eng. No. 13	
Eng. No. 14	
Eng. No. 15	
Eng. No. 16	
Eng. No. 17	
Eng. No. 18	
Eng. No. 19	
Eng. No. 20	
Eng. No. 21	
Eng. No. 22	
Eng. No. 23	
Eng. No. 24	
Eng. No. 25	
Eng. No. 26	
Eng. No. 27	
Eng. No. 28	
Eng. No. 29	
Eng. No. 30	
Eng. No. 31	
Eng. No. 32	
Eng. No. 33	
Eng. No. 34	
Eng. No. 35	
Eng. No. 36	
Eng. No. 37	
Eng. No. 38	
Eng. No. 39	
Eng. No. 40	
Eng. No. 41	
Eng. No. 42	
Eng. No. 43	
Eng. No. 44	
Eng. No. 45	
Eng. No. 46	
Eng. No. 47	
Eng. No. 48	
Eng. No. 49	
Eng. No. 50	
Eng. No. 51	
Eng. No. 52	
Eng. No. 53	
Eng. No. 54	
Eng. No. 55	
Eng. No. 56	
Eng. No. 57	
Eng. No. 58	
Eng. No. 59	
Eng. No. 60	
Eng. No. 61	
Eng. No. 62	
Eng. No. 63	
Eng. No. 64	
Eng. No. 65	
Eng. No. 66	
Eng. No. 67	
Eng. No. 68	
Eng. No. 69	
Eng. No. 70	
Eng. No. 71	
Eng. No. 72	
Eng. No. 73	
Eng. No. 74	
Eng. No. 75	
Eng. No. 76	
Eng. No. 77	
Eng. No. 78	
Eng. No. 79	
Eng. No. 80	
Eng. No. 81	
Eng. No. 82	
Eng. No. 83	
Eng. No. 84	
Eng. No. 85	
Eng. No. 86	
Eng. No. 87	
Eng. No. 88	
Eng. No. 89	
Eng. No. 90	
Eng. No. 91	
Eng. No. 92	
Eng. No. 93	
Eng. No. 94	
Eng. No. 95	
Eng. No. 96	
Eng. No. 97	
Eng. No. 98	
Eng. No. 99	
Eng. No. 100	

CLIENT AND PROFILE

SKY CITY
ENTERTAINMENT GROUP

Sky City Entertainment Group
Gaming Layouts

800-235-4343
1-800-235-4343
1-800-235-4343
1-800-235-4343

maier Moller Architects®