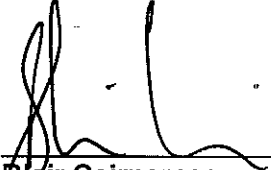


**DECISION UNDER DELEGATED AUTHORITY ON AN
APPLICATION BY SKYCITY AUCKLAND LIMITED FOR APPROVAL
OF A CONSTRUCTION AND DESIGN CHANGE TO LEVEL 6
OF THE AUCKLAND CASINO**

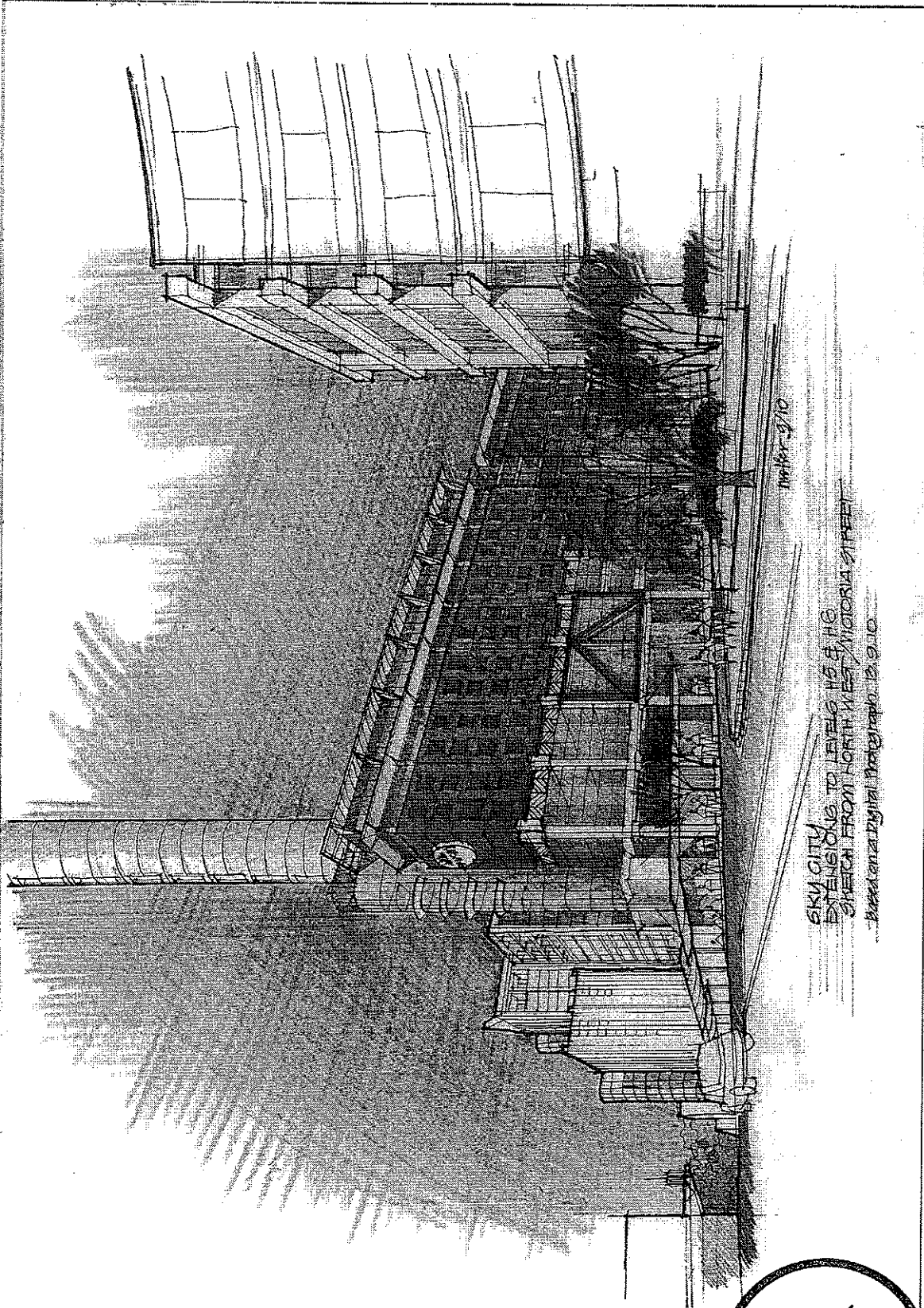
Date of Decision: 18 November 2010

1. On 16 November 2010, SKYCITY Auckland Limited ("**SCAL**") applied, pursuant to conditions 6 and 7 of its venue licence, for approval of a construction and design change to level 6 of the Auckland casino. The change involves extending the roof on level 6 and varies the construction and design changes approved by the Commission under decision GC25/10. The extended roof is shown on the **attached** sketch.
2. The application raises no issues the Commission needs to consider. Accordingly the application is approved by the Executive Director under delegated authority, pursuant to condition 7 of SCAL's venue licence.


Blair Cairncross
Executive Director
Gambling Commission



18 November 2010



**SKYCITY
NEW VIP GAMING - LEVEL H5**

ISSUED FOR RESOURCE CONSENT - 10 OCTOBER 2010

moller. Moller Architects[®]

Call 04 9 527 8866
Fax 04 9 527 0889
info@moller.co.nz
PO Box 1000
Auckland



Sky City Entertainment Group
VIP Gaming

DRAWING INFORMATION		DRAWING TITLE	
Rev.	Issue	SKY CITY - H5	SKY CITY
1	1	VICTORIA STREET PERSPECTIVE	VICTORIA STREET PERSPECTIVE
2	2	OPTION B	OPTION B
3	3		
4	4		
5	5		
6	6		
7	7		
8	8		
9	9		
10	10		
11	11		
12	12		
13	13		
14	14		
15	15		
16	16		
17	17		
18	18		
19	19		
20	20		
21	21		
22	22		
23	23		
24	24		
25	25		
26	26		
27	27		
28	28		
29	29		
30	30		
31	31		
32	32		
33	33		
34	34		
35	35		
36	36		
37	37		
38	38		
39	39		
40	40		
41	41		
42	42		
43	43		
44	44		
45	45		
46	46		
47	47		
48	48		
49	49		
50	50		
51	51		
52	52		
53	53		
54	54		
55	55		
56	56		
57	57		
58	58		
59	59		
60	60		
61	61		
62	62		
63	63		
64	64		
65	65		
66	66		
67	67		
68	68		
69	69		
70	70		
71	71		
72	72		
73	73		
74	74		
75	75		
76	76		
77	77		
78	78		
79	79		
80	80		
81	81		
82	82		
83	83		
84	84		
85	85		
86	86		
87	87		
88	88		
89	89		
90	90		
91	91		
92	92		
93	93		
94	94		
95	95		
96	96		
97	97		
98	98		
99	99		
100	100		

A6265 A6008 A