

**DECISION UNDER DELEGATED AUTHORITY ON AN APPLICATION
BY SKYCITY CASINO MANAGEMENT LIMITED FOR APPROVAL OF
NEW FLOOR PLANS FOR THE AUCKLAND CASINO**

Date of Decision: 29 April 2013

1. On 10 April 2013, SKYCITY Casino Management Limited ("SCML") applied, pursuant to condition 11 of its operator's licence for the Auckland casino, for approval of five new floor plans; 2013 L2 001F, 2013 L5 003, 2013 L5 004, 2013 L5 005 and 2013 L6 001.
2. Condition 11 provides as follows:
 11. The Licence Holder shall operate in accordance with approved floor layouts showing the position of gaming tables and gaming machines. The Licence Holder shall obtain approval for new floor plans prior to relocating or installing tables or machines in positions not specified in approved floor layouts. When applying, the Licence Holder must submit fresh plans showing the floor layout for the Gambling Area and details of the proposed CCTV layout for consideration. Any change must comply with the Surveillance Standard. The Executive Director and a single Gambling Commissioner may approve the new floor plans if they are satisfied that the floor layout has no potentially adverse effects. If they are not so satisfied, the proposed floor plan must be referred to the Commission for a decision on approval.
3. SCML submitted as follows:
 - (a) It wants to remove 6 gaming machines from the Main Gaming Floor (the "MGF") on a long term basis to accommodate the installation of up to 6 machines from time to time on levels 5 or 6 of the casino. It therefore seeks approval for a new plan (2013 L2 001F) which shows level 2 with 6 less machines than at present.
 - (b) In respect of level 5, it wants to deploy plans 2013 L5 003, 2013 L5 004 and 2013 L5 005 from time to time. Plan 2013 L5 003 features 5 EGMs in salon 82; plan 2013 L5 004 features 5 EGMs in salon 86, and plan 2013 L5 005 features 5 EGMs in salon 81.
 - (c) Subject to approval of these plans, it may, on occasion, install up to 5 machines in the respective areas within the approved configurations, but not necessarily all 5 at once.
 - (d) In respect of level 6, it wants to deploy plan 2013 L6 001, which features 6 EGMs in the private dining room. It seeks approval for this plan as it may, on occasion, install up to 6 EGMs in this area.



(e) It does not propose to locate EGMs in any of these areas permanently. The EGMs would be deployed when the need arises, and in the numbers required to meet the needs of the particular visitors they are being set up for.

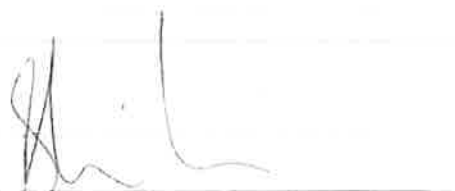
6. The proposal raises no issues of regulatory concern for the Commission. Accordingly floor plans 2013 L2 001F, 2013 L5 003, 2013 L5 004, 2013 L5 005 and 2013 L6 001 are approved by the Chief Gambling Commissioner and the Executive Director under delegated authority pursuant to condition 11 of SCML's operator's licence for the Auckland casino.

7. Plans floor plans 2013 L2 001F, 2013 L5 003, 2013 L5 004, 2013 L5 005 and 2013 L6 001 are **attached**.

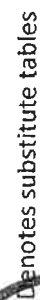


Graeme Reeves
Chief Gambling Commissioner
Gambling Commission

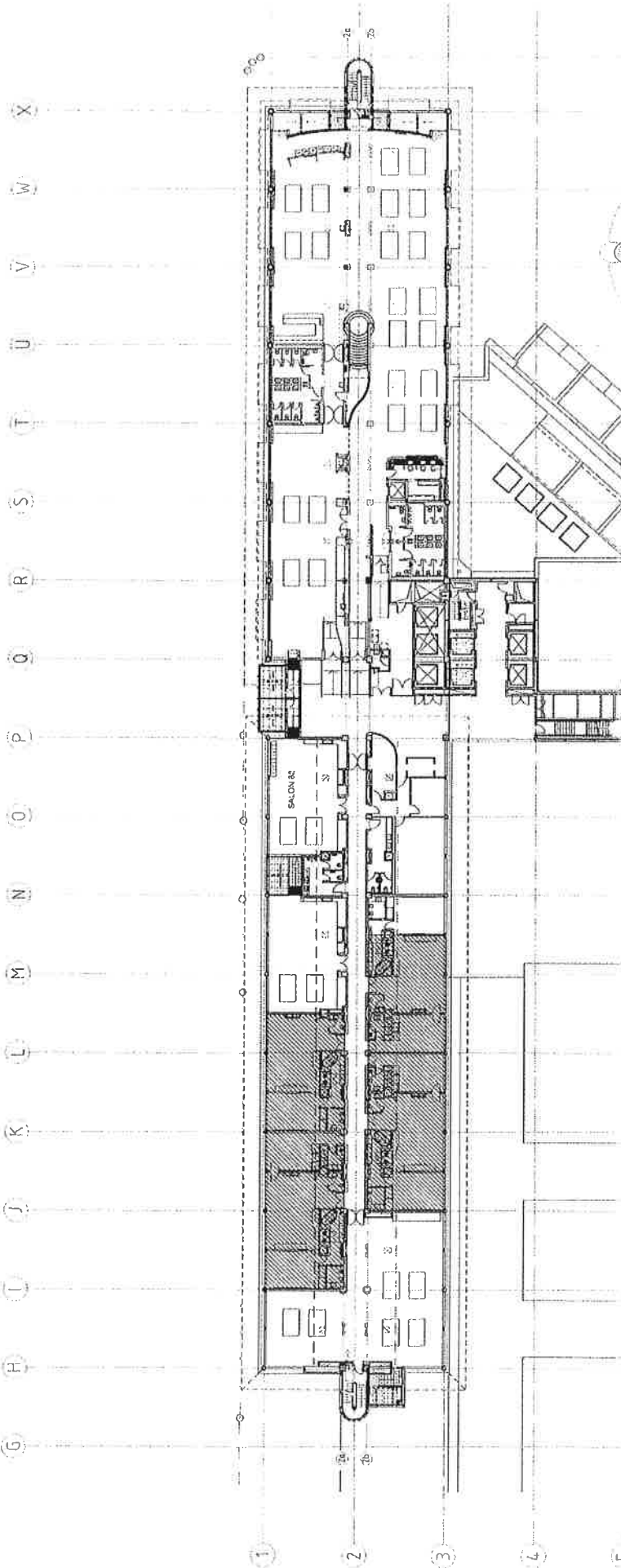
29 April 2013



Blair Cairncross
Executive Director
Gambling Commission



**GAMBLING
COMMISSION**



The eight substitute tables denoted on the MGF plan may be paired with any eight tables from salons 82, 86 and 88 as shown on this plan. The casino games that may be deployed on the substitute tables shall be consistent with an approved game mix for the salon tables that are not in use.



Call 461 3570686
Fax 466 3 3570689

Level 10, 100 Market Street
Melbourne, VIC 3000
Australia

moller Moller Architects[®]

SKY CITY
ENTERTAINMENT GROUP

Sky City Entertainment Group
Gaming Layouts

SKY CITY
ENTERTAINMENT GROUP

SKY CITY
ENTERTAINMENT GROUP

PROJECT INFORMATION

Project Name: D1 100
Project Type: D1 100
Project Location: Melbourne, VIC 3000
Project Status: Approved for construction
Project Date: 1 April 2013 2:14 PM

SKY CITY
ENTERTAINMENT GROUP

SKY CITY
ENTERTAINMENT GROUP

SKY CITY
ENTERTAINMENT GROUP

SKY CITY
ENTERTAINMENT GROUP

SKY CITY
ENTERTAINMENT GROUP

SKY CITY
ENTERTAINMENT GROUP

SKY CITY
ENTERTAINMENT GROUP

SKY CITY
ENTERTAINMENT GROUP

SKY CITY
ENTERTAINMENT GROUP

SKY CITY
ENTERTAINMENT GROUP

SKY CITY
ENTERTAINMENT GROUP

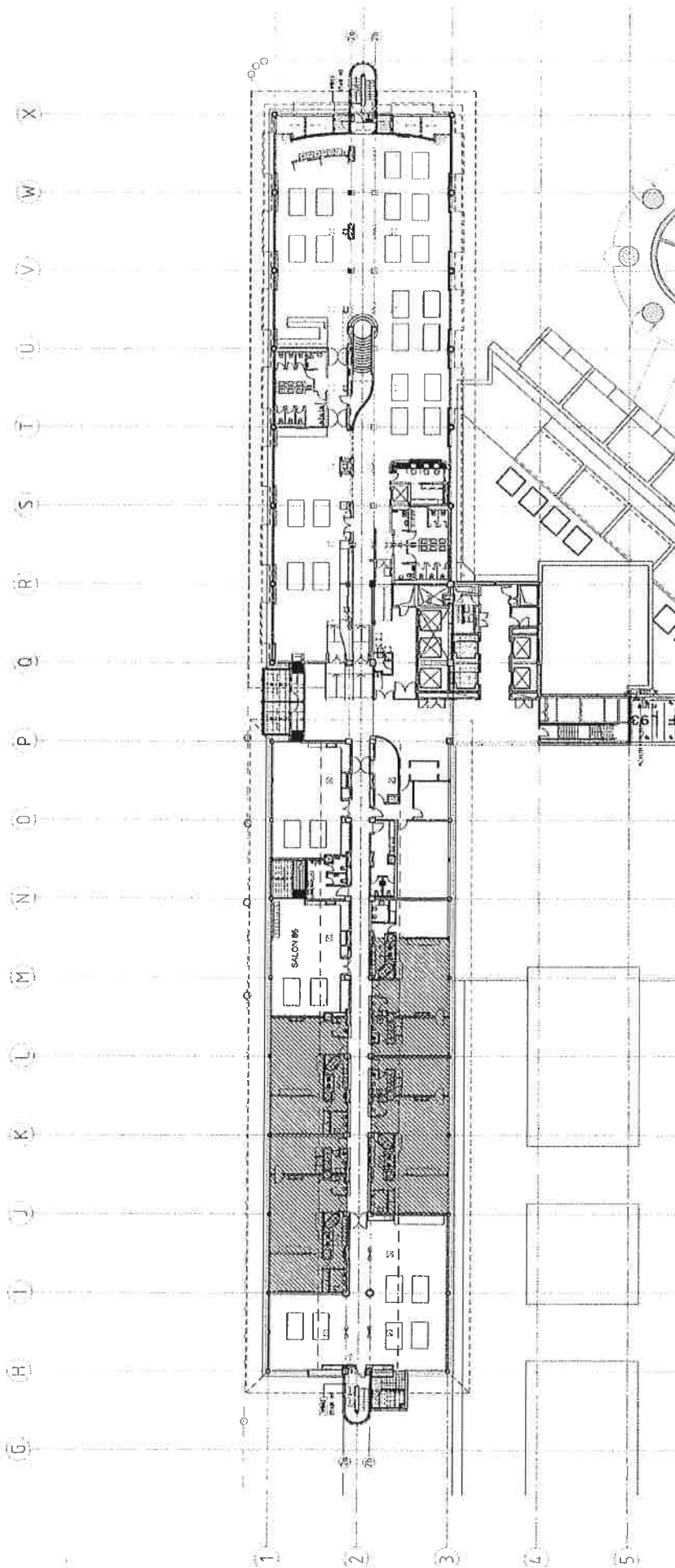
SKY CITY
ENTERTAINMENT GROUP

SKY CITY
ENTERTAINMENT GROUP

SKY CITY
ENTERTAINMENT GROUP

SKY CITY
ENTERTAINMENT GROUP

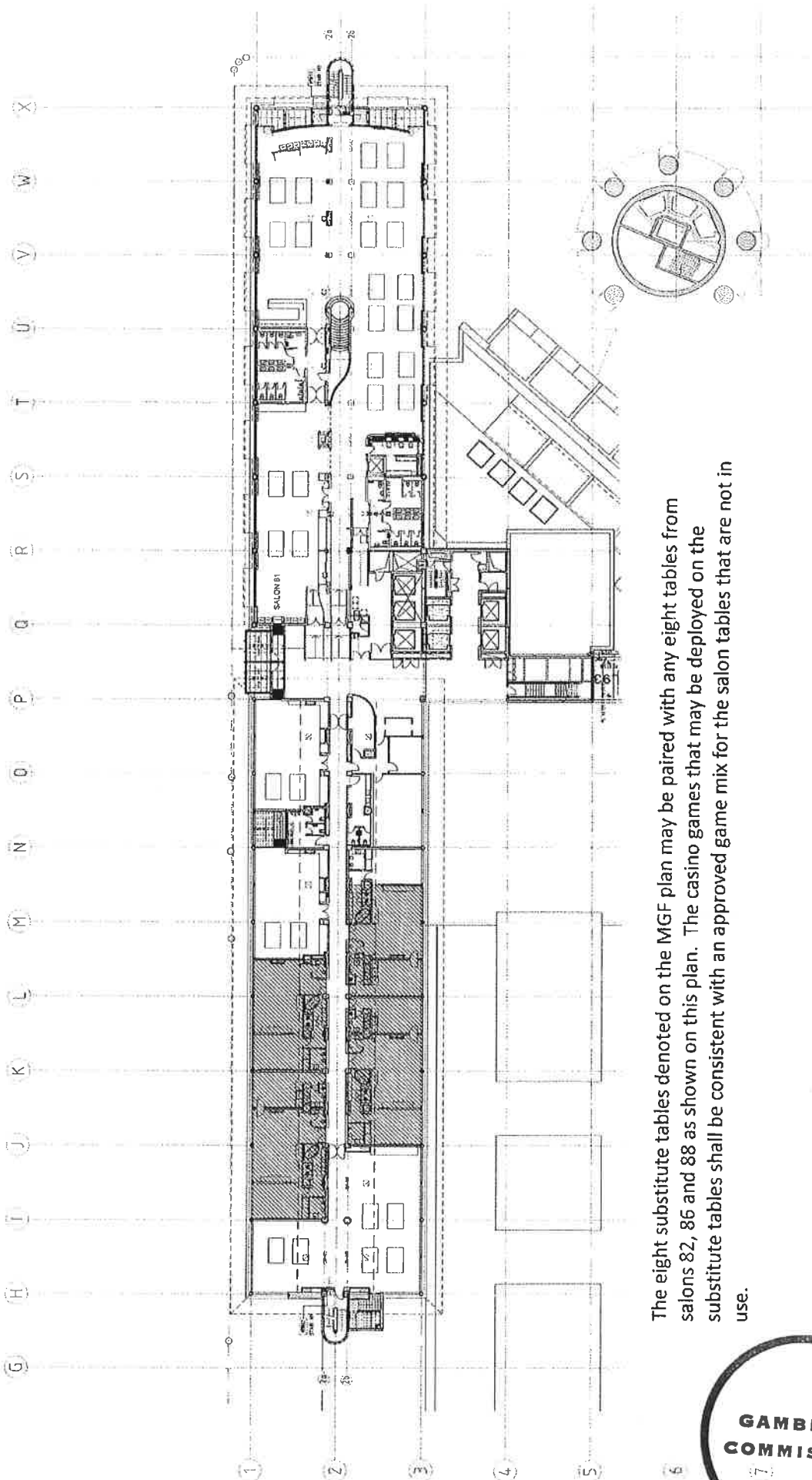
SKY CITY
ENTERTAINMENT GROUP



The eight substitute tables denoted on the MGF plan may be paired with any eight tables from salons 82, 86 and 88 as shown on this plan. The casino games that may be deployed on the substitute tables shall be consistent with an approved game mix for the salon tables that are not in use.

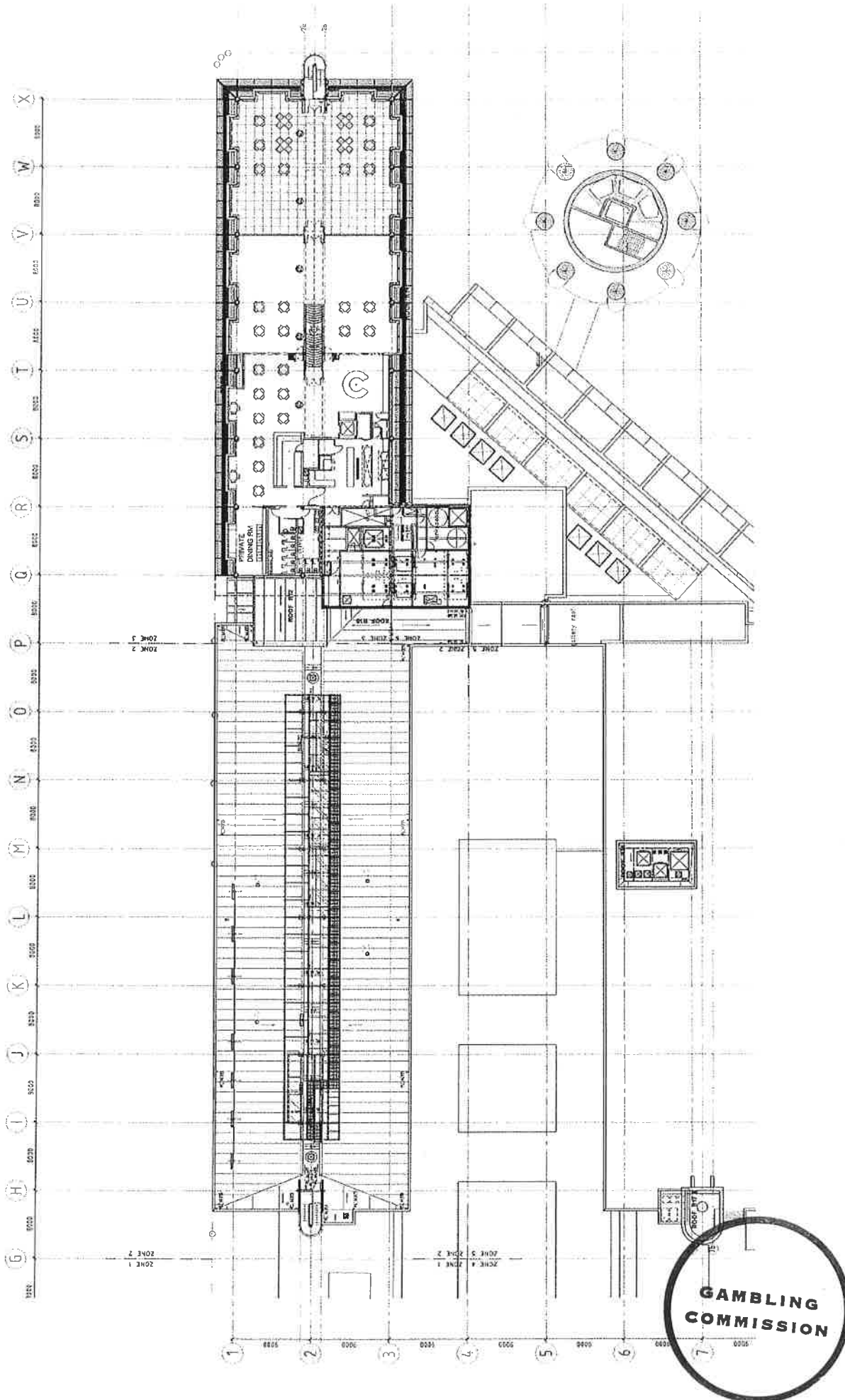


| | | | | | | |
|---|--|--|---|--|--|---|
| CAD: 42 9 337068 Fax: 42 9 337068 42 9 337068 42 9 337068 42 9 337068 | miller Moller Architects Architects | Sky City Entertainment Group Gaming Layouts | DRAWING INFORMATION Name: _____ Date: _____ Project: _____ Sheet: _____ Scale: _____ Author: _____ Check: _____ Date: _____ | A. 100% (100%) B. 100% (100%) C. 100% (100%) D. 100% (100%) E. 100% (100%) F. 100% (100%) G. 100% (100%) H. 100% (100%) I. 100% (100%) J. 100% (100%) K. 100% (100%) L. 100% (100%) M. 100% (100%) N. 100% (100%) O. 100% (100%) P. 100% (100%) Q. 100% (100%) R. 100% (100%) S. 100% (100%) T. 100% (100%) U. 100% (100%) V. 100% (100%) W. 100% (100%) X. 100% (100%) | H5 Gaming Layout SKYCITY Machines into Salon 86 - V2 03/04/2013 | REVISION No. _____ Date _____ Description _____ 5132C |
|---|--|--|---|--|--|---|



The eight substitute tables denoted on the MGF plan may be paired with any eight tables from salons 82, 86 and 88 as shown on this plan. The casino games that may be deployed on the substitute tables shall be consistent with an approved game mix for the salon tables that are not in use.





| | | | |
|--|--|---|--|
| CLIENT & PROJECT Sky City Entertainment Group Gaming Layouts SKYCITY ENTERTAINMENT GROUP | | DRAWING INFORMATION Drawing No: 2013 L6 001 Drawing Title: H6 Gaming Layout Drawing Date: 03/04/2013 Drawing By: SKYCITY | |
| REVISIONS No. 1 Description: H6 Gaming Layout Date: 03/04/2013 By: SKYCITY | | NOTES 1. See also Drawing 2013 L6 002 for Gaming Layouts. 2. The drawing shall be used in conjunction with all other drawings. 3. Copyright © 2013 Sky City Entertainment Group. All rights reserved. | |