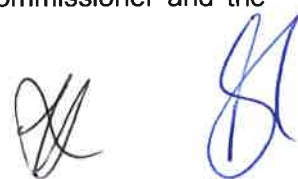


**DECISION UNDER DELEGATED AUTHORITY ON AN APPLICATION  
BY SKYCITY CASINO MANAGEMENT LIMITED FOR APPROVAL OF  
NEW FLOOR PLANS FOR THE AUCKLAND CASINO**

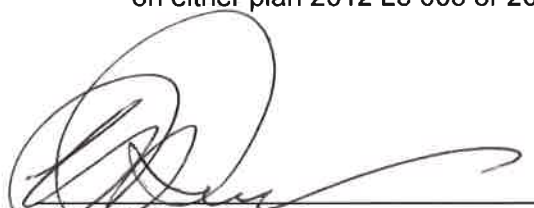
**Date of Decision:** 7 November 2012

1. On 6 November, SKYCITY Casino Management Limited ("**SCML**") applied, pursuant to condition 11 of its operator's licence for the Auckland casino, for approval of new floor plans for the Auckland casino – 2012 L3 Temp Nov 2012, 2012 L3 002, 2012 L2 001J, 2012 L3 003, 2012 L5 005 and 2012 L5 006.
2. Condition 11 provides as follows:
  11. The Licence Holder shall operate in accordance with approved floor layouts showing the position of gaming tables and gaming machines. The Licence Holder shall obtain approval for new floor plans prior to relocating or installing tables or machines in positions not specified in approved floor layouts. When applying, the Licence Holder must submit fresh plans showing the floor layout for the Gambling Area and details of the proposed CCTV layout for consideration. Any change must comply with the Surveillance Standard. The Executive Director and a single Gambling Commissioner may approve the new floor plans if they are satisfied that the floor layout has no potentially adverse effects. If they are not so satisfied, the proposed floor plan must be referred to the Commission for a decision on approval.
3. SCML stated that it wants to relocate 11 Poker tables from the "Poker Zone" to the "Nations Clubrooms". Seven tables will be removed from the Poker Zone on 13 November, leaving four operational tables in the current Poker Zone as depicted in plan 2012 L3 Temp Nov 2012.
4. On 14 November 2012 the remaining four tables will be relocated from the Poker Zone to the Nations Clubrooms, as depicted in plan 2012 L3 002. All 11 Poker tables will then become operational.
5. On or around 19 November 2012, one table from the "Rouge Room" will be relocated to "Sammy's Place", with two other tables in the Rouge Room being repositioned, as depicted in plan 2012 L2 001J.
6. On or around 27 November 2012, it wants to remove two Poker tables from the Nations Clubrooms, as depicted in plan 2012 L3 003. These two tables will be relocated to the VIP area on level 5, as depicted on plans 2012 L5 005 and 2012 L5 006.
6. SCML stated that any necessary adjustments to the location of cameras will be made and that these changes will comply with the Surveillance Standard.
7. The proposal raises no issues of regulatory concern for the Commission. Accordingly the proposed new floor plans are approved by the Chief Gambling Commissioner and the

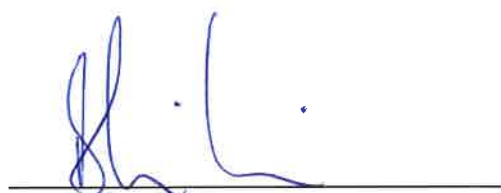


Executive Director under delegated authority pursuant to condition 11 of SCML's operator's licence for the Auckland casino. Plans 2012 L3 Temp Nov 2012, 2012 L3 002, 2012 L2 001J, 2012 L3 003, 2012 L5 005 and 2012 L5 006 are **attached**.

8. Once SCML is reliant on plan 2012 L3 Temp Nov 12, plan 2012 L3 001 will become redundant. Once reliant plan 2012 L3 002, plan 2012 L3 Temp Nov 12 will become redundant. Following the completion of the construction work around the Rouge Room (on or around 10 December 2012), SCML will revert from plan 2012 L2 001J to plan 2012 L2 001H. Once reliant on plan 2012 L2 001H, plan 2012 L2 001J will become redundant. Once reliant on plan 2012 L3 003, plan 2012 L3 002 will become redundant. Once reliant on either plan 2012 L5 005 or 2012 L5 006, plans L5 001-004 will be redundant.



**Graeme Reeves**  
Chief Gambling Commissioner  
Gambling Commission



**Blair Cairncross**  
Executive Director  
Gambling Commission

7

November 2012





**GAMBLING  
COMMISSION**



**Moller** Moller Architects®

Call • 84 8 3570880  
Fax • 84 8 3570869

Sky City Entertainment Group  
Gaming Layouts

SKYCITY  
ENTERTAINMENT GROUP

SUBJECT AND PROJECT DRAWING INFORMATION	Revision
--	----------

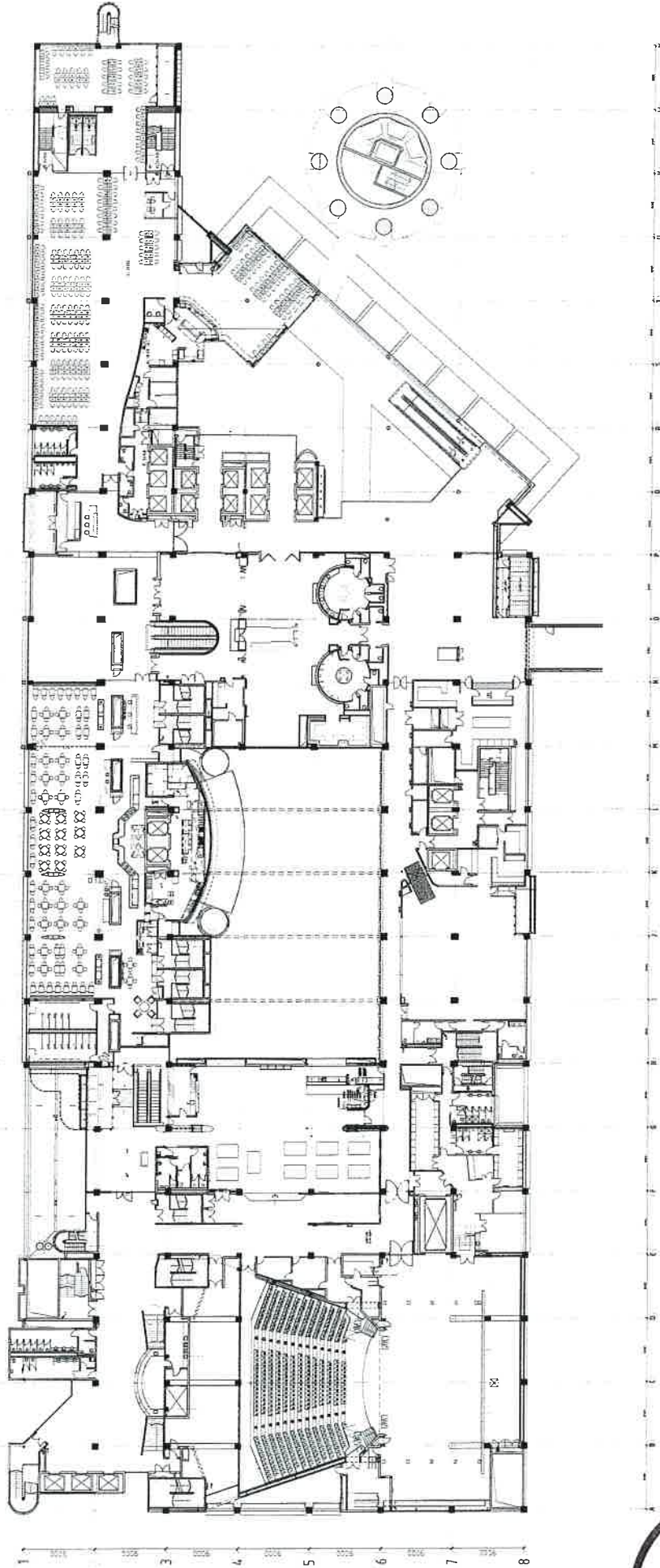
\* Write to: Specimen, the Original Specimen  
 Don't forget to include the activity of the specimen before the specimen was  
 the specimen was used in the specimen with the specimen of the specimen.  
 Copyright © 1999, 2000, 2001, 2002, 2003, 2004, 2005, 2006, 2007, 2008, 2009, 2010, 2011, 2012, 2013, 2014, 2015, 2016, 2017, 2018, 2019, 2020, 2021, 2022, 2023, 2024, 2025, 2026, 2027, 2028, 2029, 2030, 2031, 2032, 2033, 2034, 2035, 2036, 2037, 2038, 2039, 2040, 2041, 2042, 2043, 2044, 2045, 2046, 2047, 2048, 2049, 2050, 2051, 2052, 2053, 2054, 2055, 2056, 2057, 2058, 2059, 2060, 2061, 2062, 2063, 2064, 2065, 2066, 2067, 2068, 2069, 2070, 2071, 2072, 2073, 2074, 2075, 2076, 2077, 2078, 2079, 2080, 2081, 2082, 2083, 2084, 2085, 2086, 2087, 2088, 2089, 2090, 2091, 2092, 2093, 2094, 2095, 2096, 2097, 2098, 2099, 2100, 2101, 2102, 2103, 2104, 2105, 2106, 2107, 2108, 2109, 2110, 2111, 2112, 2113, 2114, 2115, 2116, 2117, 2118, 2119, 2120, 2121, 2122, 2123, 2124, 2125, 2126, 2127, 2128, 2129, 2130, 2131, 2132, 2133, 2134, 2135, 2136, 2137, 2138, 2139, 2140, 2141, 2142, 2143, 2144, 2145, 2146, 2147, 2148, 2149, 2150, 2151, 2152, 2153, 2154, 2155, 2156, 2157, 2158, 2159, 2160, 2161, 2162, 2163, 2164, 2165, 2166, 2167, 2168, 2169, 2170, 2171, 2172, 2173, 2174, 2175, 2176, 2177, 2178, 2179, 2180, 2181, 2182, 2183, 2184, 2185, 2186, 2187, 2188, 2189, 2190, 2191, 2192, 2193, 2194, 2195, 2196, 2197, 2198, 2199, 2200, 2201, 2202, 2203, 2204, 2205, 2206, 2207, 2208, 2209, 2210, 2211, 2212, 2213, 2214, 2215, 2216, 2217, 2218, 2219, 2220, 2221, 2222, 2223, 2224, 2225, 2226, 2227, 2228, 2229, 2230, 2231, 2232, 2233, 2234, 2235, 2236, 2237, 2238, 2239, 2240, 2241, 2242, 2243, 2244, 2245, 2246, 2247, 2248, 2249, 2250, 2251, 2252, 2253, 2254, 2255, 2256, 2257, 2258, 2259, 2260, 2261, 2262, 2263, 2264, 2265, 2266, 2267, 2268, 2269, 2270, 2271, 2272, 2273, 2274, 2275, 2276, 2277, 2278, 2279, 2280, 2281, 2282, 2283, 2284, 2285, 2286, 2287, 2288, 2289, 2290, 2291, 2292, 2293, 2294, 2295, 2296, 2297, 2298, 2299, 2300, 2301, 2302, 2303, 2304, 2305, 2306, 2307, 2308, 2309, 2310, 2311, 2312, 2313, 2314, 2315, 2316, 2317, 2318, 2319, 2320, 2321, 2322, 2323, 2324, 2325, 2326, 2327, 2328, 2329, 2330, 2331, 2332, 2333, 2334, 2335, 2336, 2337, 2338, 2339, 2340, 2341, 2342, 2343, 2344, 2345, 2346, 2347, 2348, 2349, 2350, 2351, 2352, 2353, 2354, 2355, 2356, 2357, 2358, 2359, 2360, 2361, 2362, 2363, 2364, 2365, 2366, 2367, 2368, 2369, 2370, 2371, 2372, 2373, 2374, 2375, 2376, 2377, 2378, 2379, 2380, 2381, 2382, 2383, 2384, 2385, 2386, 2387, 2388, 2389, 2390, 2391, 2392, 2393, 2394, 2395, 2396, 2397, 2398, 2399, 2400, 2401, 2402, 2403, 2404, 2405, 2406, 2407, 2408, 2409, 2410, 2411, 2412, 2413, 2414, 2415, 2416, 2417, 2418, 2419, 2420, 2421, 2422, 2423, 2424, 2425, 2426, 2427, 2428, 2429, 2430, 2431, 2432, 2433, 2434, 2435, 2436, 2437, 2438, 2439, 2440, 2441, 2442, 2443, 2444, 2445, 2446, 2447, 2448, 2449, 2450, 2451, 2452, 2453, 2454, 2455, 2456, 2457, 2458, 2459, 2460, 2461, 2462, 2463, 2464, 2465, 2466, 2467, 2468, 2469, 2470, 2471, 2472, 2473, 2474, 2475, 2476, 2477, 2478, 2479, 2480, 2481, 2482, 2483, 2484, 2485, 2486, 2487, 2488, 2489, 2490, 2491, 2492, 2493, 2494, 2495, 2496, 2497, 2498, 2499, 2500, 2501, 2502, 2503, 2504, 2505, 2506, 2507, 2508, 2509, 2510, 2511, 2512, 2513, 2514, 2515, 2516, 2517, 2518, 2519, 2520, 2521, 2522, 2523, 2524, 2525, 2526, 2527, 2528, 2529, 2530, 2531, 2532, 2533, 2534, 2535, 2536, 2537, 2538, 2539, 2540, 2541, 2542, 2543, 2544, 2545, 2546, 2547, 2548, 2549, 2550, 2551, 2552, 2553, 2554, 2555, 2556, 2557, 2558, 2559, 2560, 2561, 2562, 2563, 2564, 2565, 2566, 2567, 2568, 2569, 2570, 2571, 2572, 2573, 2574, 2575, 2576, 2577, 2578, 2579, 2580, 2581, 2582, 2583, 2584, 2585, 2586, 2587, 2588, 2589, 2590, 2591, 2592, 2593, 2594, 2595, 2596, 2597, 2598, 2599, 2600, 2601, 2602, 2603, 2604, 2605, 2606, 2607, 2608, 2609, 2610, 2611, 2612, 2613, 2614, 2615, 2616, 2617, 2618, 2619, 2620, 2621, 2622, 2623, 2624, 2625, 2626, 2627, 2628, 2629, 2630, 2631, 2632, 2633, 2634, 2635, 2636, 2637, 2638, 2639, 2640, 2641, 2642, 2643, 2644, 2645, 2646, 2647, 2648, 2649, 2650, 2651, 2652, 2653, 2654, 2655, 2656, 2657, 2658, 2659, 2660, 2661, 2662, 2663, 2664, 2665, 2666, 2667, 2668, 2669, 2670, 2671, 267

Level 2 Gaming Layout  
SKYCITY  
Poker Stair Hoarding  
19/11/2012

5132C



A B C D E F G H I J K L M N O P Q R S T U V W X

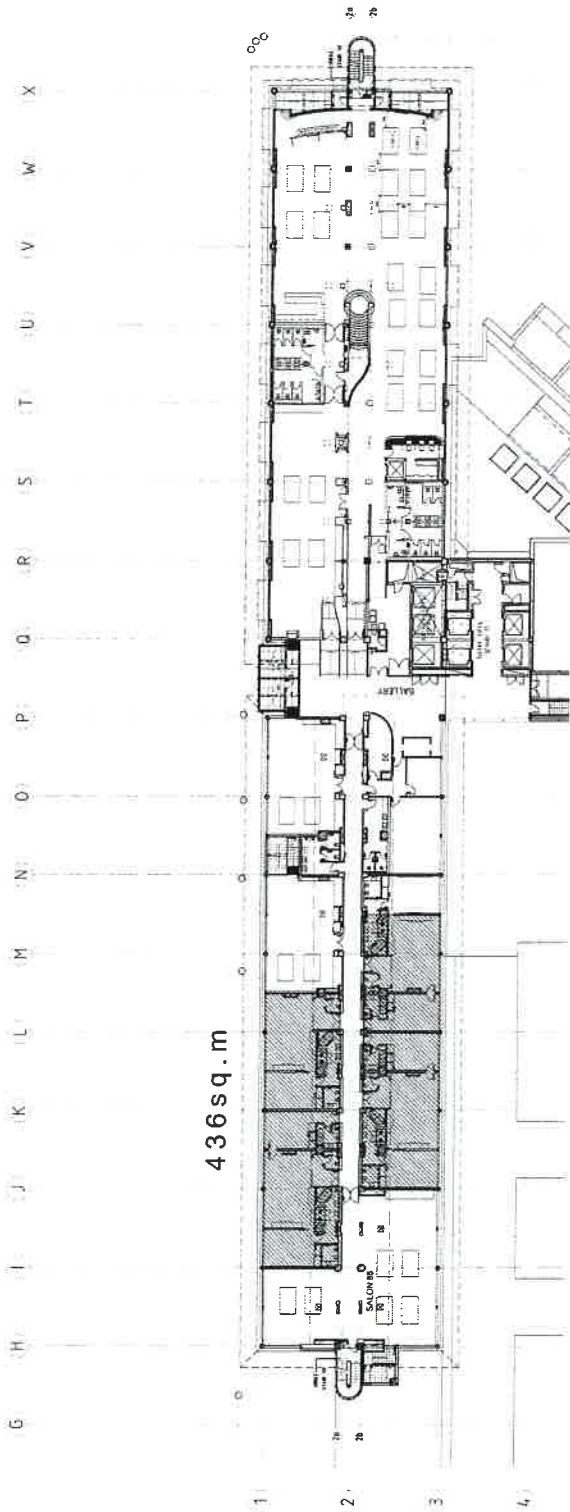


<b>SKYCITY</b> ENTERTAINMENT GROUP		Call: 64 9 3570696 Fax: 64 9 3570698 Level 13 West Tower 225 Queen Street PO Box 100-200 Auckland, New Zealand <a href="http://www.skycity.com">www.skycity.com</a>	<b>Moller Architects</b> Architects	Sky City Entertainment Group Gaming Layouts	PROJECT INFORMATION Project Name: SKYCITY Project Size: 10,000 sqm Site Area: 10,000 sqm Site Size: 10,000 sqm Date: 27/11/2012	REVISIONS No. Description Date By Checked Approved
---------------------------------------	--	---	--	--	--	---

Call: 64 9 3570696  
 Fax: 64 9 3570698  
 Level 13 West Tower  
 225 Queen Street  
 PO Box 100-200  
 Auckland, New Zealand  
[www.skycity.com](http://www.skycity.com)



GAMBLING  
 COMMISSION



The two substitute tables denoted on the MGF plan may be paired with any two tables from salons 82, 86 and 88 as shown on this plan. The casino games that may be deployed on the substitute tables shall be consistent with an approved game mix for the paired tables that are not in use.



**Moller Architects**  
 1000 10th Street  
 New York, NY 10011  
 Tel: 212 333 3333  
 Fax: 212 333 3334  
 www.mollerarchitects.com

Call: 64 6 3570080  
 Fax: 64 6 3570080  
 Level 10 New York  
 1000 10th Street  
 New York, NY 10011  
 www.mollerarchitects.com



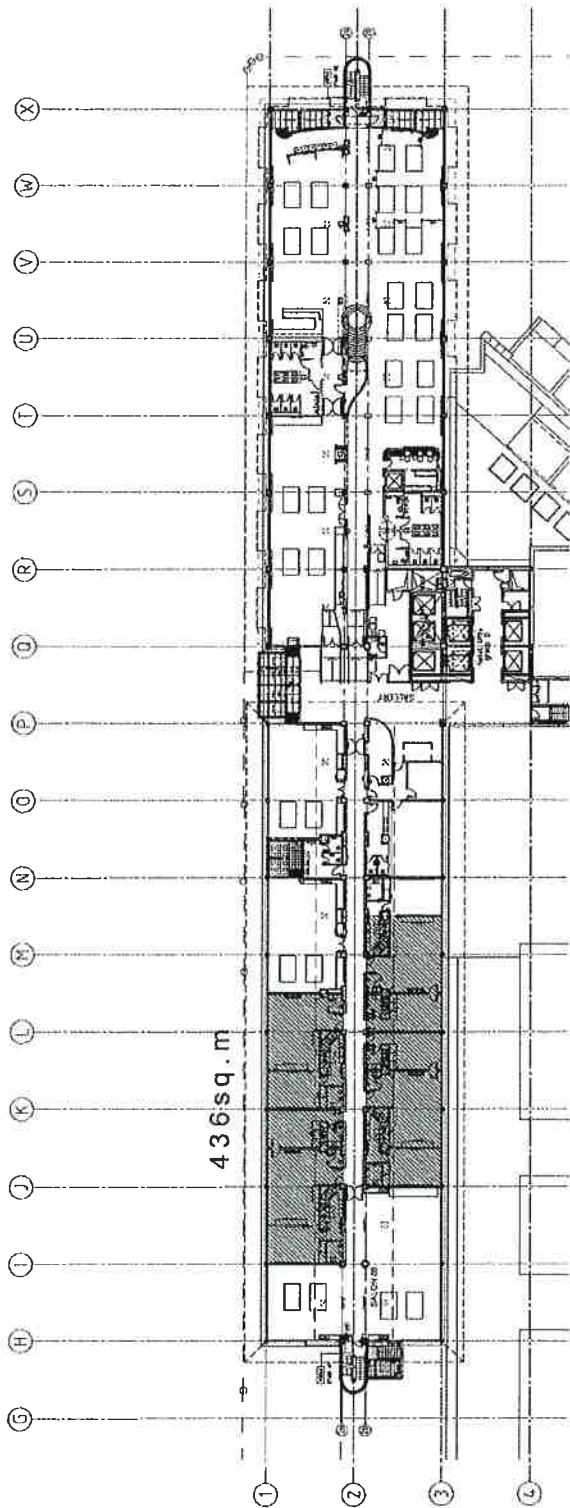
**Sky City Entertainment Group**  
 Gaming Layouts

**SKY CITY ENTERTAINMENT GROUP**  
 1000 10th Street  
 New York, NY 10011  
 Tel: 212 333 3333  
 Fax: 212 333 3334  
 www.mollerarchitects.com

**SKY CITY ENTERTAINMENT GROUP**  
 1000 10th Street  
 New York, NY 10011  
 Tel: 212 333 3333  
 Fax: 212 333 3334  
 www.mollerarchitects.com

**SKY CITY ENTERTAINMENT GROUP**  
 1000 10th Street  
 New York, NY 10011  
 Tel: 212 333 3333  
 Fax: 212 333 3334  
 www.mollerarchitects.com

**SKY CITY ENTERTAINMENT GROUP**  
 1000 10th Street  
 New York, NY 10011  
 Tel: 212 333 3333  
 Fax: 212 333 3334  
 www.mollerarchitects.com



The two substitute tables denoted on the MGF plan may be paired with any two tables from salons 82, 86 and 88 as shown on this plan. The casino games that may be deployed on the substitute tables shall be consistent with an approved game mix for the paired tables that are not in use.



**moller.** Moller Architects®

Call: 435.937.0089  
Fax: 435.937.0088  
1000 N. Main Street  
PO Box 1000  
Salt Lake City, UT 84102  
www.mollerarchitects.com



Sky City Entertainment Group  
Gaming Layouts

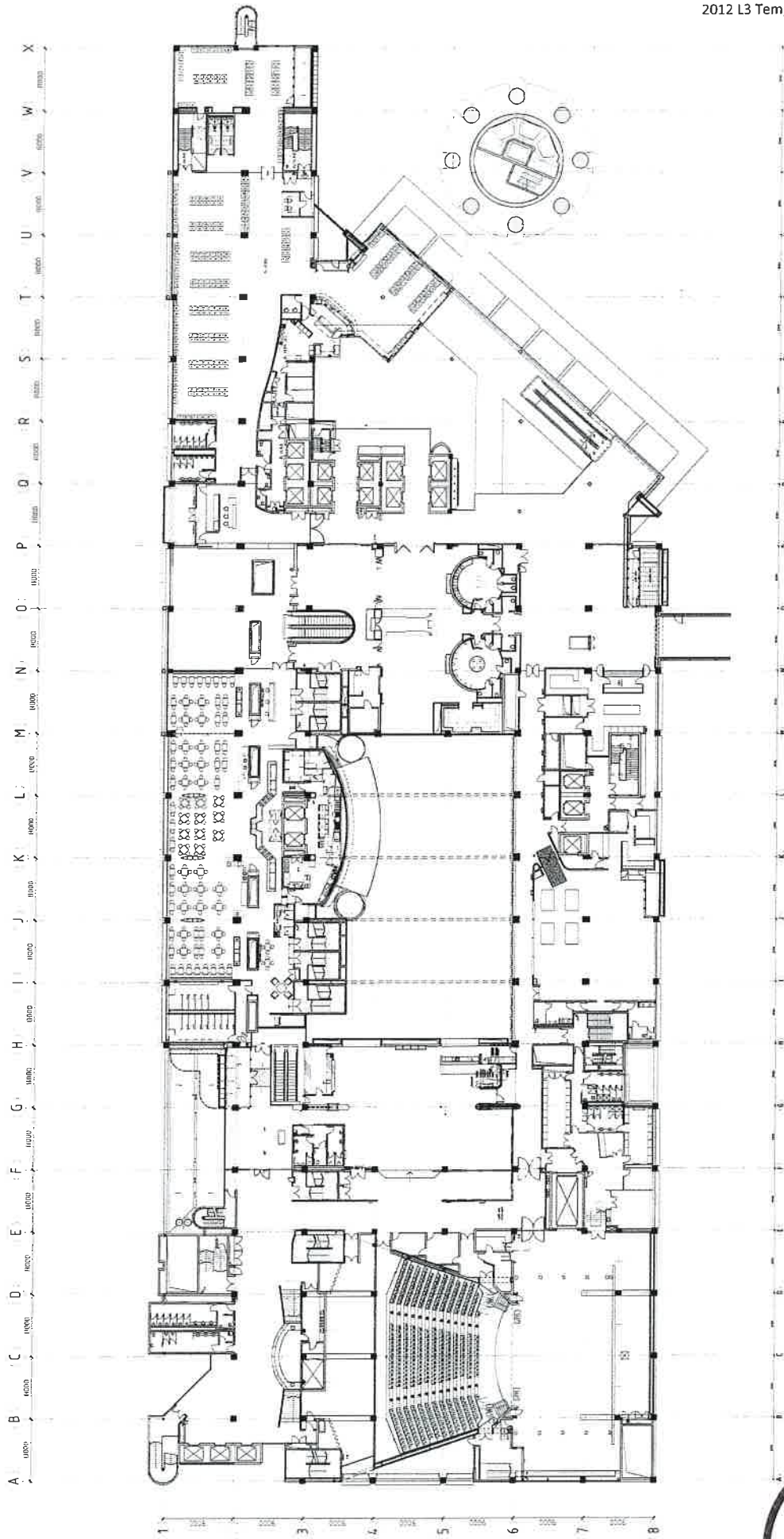
CLIENT AND PROJECT

Drawn: [blank] Date: 05/11/2012  
Checked: [blank] Date: 05/11/2012  
Designed: [blank] Date: 05/11/2012  
Project: Sky City Entertainment Group  
Project Location: [blank]  
Project Description: [blank]

PROJECT TITLE  
H5 Gaming Layout  
05/11/2012

REVISION	BY	DATE
1	W. Moller	05/11/2012
2	W. Moller	05/11/2012
3	W. Moller	05/11/2012
4	W. Moller	05/11/2012
5	W. Moller	05/11/2012
6	W. Moller	05/11/2012
7	W. Moller	05/11/2012
8	W. Moller	05/11/2012
9	W. Moller	05/11/2012
10	W. Moller	05/11/2012
11	W. Moller	05/11/2012
12	W. Moller	05/11/2012
13	W. Moller	05/11/2012
14	W. Moller	05/11/2012
15	W. Moller	05/11/2012
16	W. Moller	05/11/2012
17	W. Moller	05/11/2012
18	W. Moller	05/11/2012
19	W. Moller	05/11/2012
20	W. Moller	05/11/2012
21	W. Moller	05/11/2012
22	W. Moller	05/11/2012
23	W. Moller	05/11/2012
24	W. Moller	05/11/2012
25	W. Moller	05/11/2012
26	W. Moller	05/11/2012
27	W. Moller	05/11/2012
28	W. Moller	05/11/2012
29	W. Moller	05/11/2012
30	W. Moller	05/11/2012
31	W. Moller	05/11/2012
32	W. Moller	05/11/2012
33	W. Moller	05/11/2012
34	W. Moller	05/11/2012
35	W. Moller	05/11/2012
36	W. Moller	05/11/2012
37	W. Moller	05/11/2012
38	W. Moller	05/11/2012
39	W. Moller	05/11/2012
40	W. Moller	05/11/2012
41	W. Moller	05/11/2012
42	W. Moller	05/11/2012
43	W. Moller	05/11/2012
44	W. Moller	05/11/2012
45	W. Moller	05/11/2012
46	W. Moller	05/11/2012
47	W. Moller	05/11/2012
48	W. Moller	05/11/2012
49	W. Moller	05/11/2012
50	W. Moller	05/11/2012
51	W. Moller	05/11/2012
52	W. Moller	05/11/2012
53	W. Moller	05/11/2012
54	W. Moller	05/11/2012
55	W. Moller	05/11/2012
56	W. Moller	05/11/2012
57	W. Moller	05/11/2012
58	W. Moller	05/11/2012
59	W. Moller	05/11/2012
60	W. Moller	05/11/2012
61	W. Moller	05/11/2012
62	W. Moller	05/11/2012
63	W. Moller	05/11/2012
64	W. Moller	05/11/2012
65	W. Moller	05/11/2012
66	W. Moller	05/11/2012
67	W. Moller	05/11/2012
68	W. Moller	05/11/2012
69	W. Moller	05/11/2012
70	W. Moller	05/11/2012
71	W. Moller	05/11/2012
72	W. Moller	05/11/2012
73	W. Moller	05/11/2012
74	W. Moller	05/11/2012
75	W. Moller	05/11/2012
76	W. Moller	05/11/2012
77	W. Moller	05/11/2012
78	W. Moller	05/11/2012
79	W. Moller	05/11/2012
80	W. Moller	05/11/2012
81	W. Moller	05/11/2012
82	W. Moller	05/11/2012
83	W. Moller	05/11/2012
84	W. Moller	05/11/2012
85	W. Moller	05/11/2012
86	W. Moller	05/11/2012
87	W. Moller	05/11/2012
88	W. Moller	05/11/2012
89	W. Moller	05/11/2012
90	W. Moller	05/11/2012
91	W. Moller	05/11/2012
92	W. Moller	05/11/2012
93	W. Moller	05/11/2012
94	W. Moller	05/11/2012
95	W. Moller	05/11/2012
96	W. Moller	05/11/2012
97	W. Moller	05/11/2012
98	W. Moller	05/11/2012
99	W. Moller	05/11/2012
100	W. Moller	05/11/2012





• **Refer to** *Mathematics 1 for Business, Equations*  
 When factoring, start with the trinomial before converting back  
 this way that it can be completed with an integral trinomial.  
 Copyright © Cengage Learning. All Rights Reserved. May not be copied, scanned, or duplicated, in whole or in part. WCN 02-200-203

[illegible]Sky City Entertainment Group  
Gaming Layouts

**SKYCITY**  
ENTERTAINMENT GROUP

**Call +64 9 3570088**  
**Fax +64 9 3570689**

Livestock West Island  
P.O. Box 100  
P.O. Box 100  
Auckland, New Zealand  
[www.medicall.com](http://www.medicall.com)

Moller  
Architects®

The seal of the Nevada Gambling Commission is a circular emblem. It features the words "NEVADA" at the top and "GAMBLING COMMISSION" at the bottom, separated by a horizontal line. The center of the seal contains the word "COMMISSION" in a larger font. The seal is surrounded by a thick black border. There are several handwritten signatures in blue ink over the seal, including one that appears to be "J. Edgar Hoover" and another that appears to be "W. A. Rorer".

