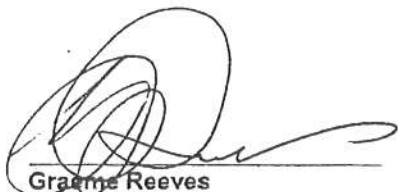


DECISION UNDER DELEGATED AUTHORITY ON AN APPLICATION  
BY SKYCITY CASINO MANAGEMENT LIMITED  
FOR APPROVAL OF NEW FLOOR PLANS FOR THE AUCKLAND CASINO

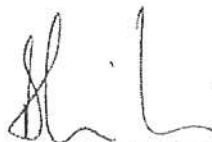
Date of Decision: 15 October 2012

1. On 11 October 2012, SKYCITY Casino Management Limited ("SCML") applied, pursuant to condition 11 of SCML's operator's licence for the Auckland casino, for approval of new floor plans for the Auckland casino – 2012 L2 001I, 2012 L5 003 and 2012 L5 004.
2. Condition 11 provides as follows:
  11. The Licence Holder shall operate in accordance with approved floor layouts showing the position of gaming tables and gaming machines. The Licence Holder shall obtain approval for new floor plans prior to relocating or installing tables or machines in positions not specified in approved floor layouts. When applying, the Licence Holder must submit fresh plans showing the floor layout for the Gambling Area and details of the proposed CCTV layout for consideration. Any change must comply with the Surveillance Standard. The Executive Director and a single Gambling Commissioner may approve the new floor plans if they are satisfied that the floor layout has no potentially adverse effects. If they are not so satisfied, the proposed floor plan must be referred to the Commission for a decision on approval.
3. SCML wants to install two additional tables on the northern side of Level 5. The introduction of these additional tables necessitates the removal of two tables elsewhere in the casino, or alternatively, designating two existing tables as substitute tables.
4. SCML wants to designate two further tables on level 2 as substitute tables, pursuant to condition 6A of its operator's licence.
5. SCML stated that any necessary adjustments to the location of cameras will be made and that these changes will comply with the Surveillance Standard.
6. The proposal raises no issues of regulatory concern for the Commission. Accordingly the proposed new floor plans are approved by the Chief Gambling Commissioner and the Executive Director under delegated authority pursuant to condition 11 of SCML's operator's licence for the Auckland casino. Plans 2012 L2 001I, 2012 L5 003 and 2012 L5 004 are **attached**.

7. Once SCML is reliant on plan 2012 L2 001I, plan 2012 L2 001H will cease to be valid.  
Once SCML is reliant on either plan 2012 L5 003 or 2012 L5 004, plans 2012 L5 001 and 2012 L5 002 will cease to be valid.



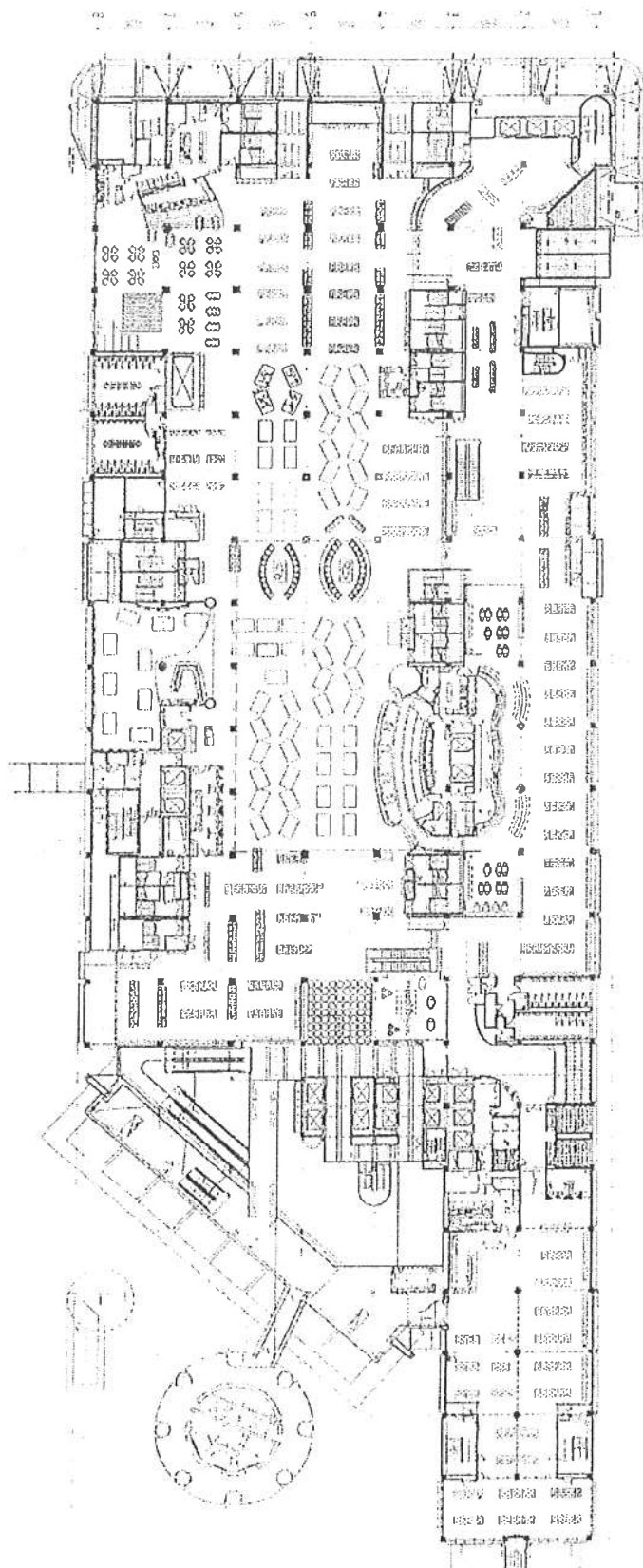
**Graeme Reeves**  
Chief Gambling Commissioner  
Gambling Commission



**Blair Cairncross**  
Executive Director  
Gambling Commission

15 October 2012





$\frac{1}{x^2} = x^{-2}$

$$\frac{d}{dx} x^{-2} = -2x^{-3} = -\frac{2}{x^3}$$

$\frac{1}{x^3} = x^{-3}$

$$\frac{d}{dx} x^{-3} = -3x^{-4} = -\frac{3}{x^4}$$

$\frac{1}{x^4} = x^{-4}$

$$\frac{d}{dx} x^{-4} = -4x^{-5} = -\frac{4}{x^5}$$

$\frac{1}{x^5} = x^{-5}$

$$\frac{d}{dx} x^{-5} = -5x^{-6} = -\frac{5}{x^6}$$

$\frac{1}{x^6} = x^{-6}$

$$\frac{d}{dx} x^{-6} = -6x^{-7} = -\frac{6}{x^7}$$

$\frac{1}{x^7} = x^{-7}$

$$\frac{d}{dx} x^{-7} = -7x^{-8} = -\frac{7}{x^8}$$

$\frac{1}{x^8} = x^{-8}$

$$\frac{d}{dx} x^{-8} = -8x^{-9} = -\frac{8}{x^9}$$

$\frac{1}{x^9} = x^{-9}$

$$\frac{d}{dx} x^{-9} = -9x^{-10} = -\frac{9}{x^{10}}$$

$\frac{1}{x^{10}} = x^{-10}$

$$\frac{d}{dx} x^{-10} = -10x^{-11} = -\frac{10}{x^{11}}$$

$\frac{1}{x^{11}} = x^{-11}$

$$\frac{d}{dx} x^{-11} = -11x^{-12} = -\frac{11}{x^{12}}$$

$\frac{1}{x^{12}} = x^{-12}$

$$\frac{d}{dx} x^{-12} = -12x^{-13} = -\frac{12}{x^{13}}$$

$\frac{1}{x^{13}} = x^{-13}$

$$\frac{d}{dx} x^{-13} = -13x^{-14} = -\frac{13}{x^{14}}$$

$\frac{1}{x^{14}} = x^{-14}$

$$\frac{d}{dx} x^{-14} = -14x^{-15} = -\frac{14}{x^{15}}$$

$\frac{1}{x^{15}} = x^{-15}$

$$\frac{d}{dx} x^{-15} = -15x^{-16} = -\frac{15}{x^{16}}$$

$\frac{1}{x^{16}} = x^{-16}$

$$\frac{d}{dx} x^{-16} = -16x^{-17} = -\frac{16}{x^{17}}$$

$\frac{1}{x^{17}} = x^{-17}$

$$\frac{d}{dx} x^{-17} = -17x^{-18} = -\frac{17}{x^{18}}$$

$\frac{1}{x^{18}} = x^{-18}$

$$\frac{d}{dx} x^{-18} = -18x^{-19} = -\frac{18}{x^{19}}$$

$\frac{1}{x^{19}} = x^{-19}$

$$\frac{d}{dx} x^{-19} = -19x^{-20} = -\frac{19}{x^{20}}$$

$\frac{1}{x^{20}} = x^{-20}$

$$\frac{d}{dx} x^{-20} = -20x^{-21} = -\frac{20}{x^{21}}$$

$\frac{1}{x^{21}} = x^{-21}$

$$\frac{d}{dx} x^{-21} = -21x^{-22} = -\frac{21}{x^{22}}$$

$\frac{1}{x^{22}} = x^{-22}$

$$\frac{d}{dx} x^{-22} = -22x^{-23} = -\frac{22}{x^{23}}$$

$\frac{1}{x^{23}} = x^{-23}$

$$\frac{d}{dx} x^{-23} = -23x^{-24} = -\frac{23}{x^{24}}$$

$\frac{1}{x^{24}} = x^{-24}$

$$\frac{d}{dx} x^{-24} = -24x^{-25} = -\frac{24}{x^{25}}$$

$\frac{1}{x^{25}} = x^{-25}$

$$\frac{d}{dx} x^{-25} = -25x^{-26} = -\frac{25}{x^{26}}$$

$\frac{1}{x^{26}} = x^{-26}$

$$\frac{d}{dx} x^{-26} = -26x^{-27} = -\frac{26}{x^{27}}$$

$\frac{1}{x^{27}} = x^{-27}$

$$\frac{d}{dx} x^{-27} = -27x^{-28} = -\frac{27}{x^{28}}$$

$\frac{1}{x^{28}} = x^{-28}$

$$\frac{d}{dx} x^{-28} = -28x^{-29} = -\frac{28}{x^{29}}$$

$\frac{1}{x^{29}} = x^{-29}$

$$\frac{d}{dx} x^{-29} = -29x^{-30} = -\frac{29}{x^{30}}$$

$\frac{1}{x^{30}} = x^{-30}$

$$\frac{d}{dx} x^{-30} = -30x^{-31} = -\frac{30}{x^{31}}$$

$\frac{1}{x^{31}} = x^{-31}$

$$\frac{d}{dx} x^{-31} = -31x^{-32} = -\frac{31}{x^{32}}$$

$\frac{1}{x^{32}} = x^{-32}$

$$\frac{d}{dx} x^{-32} = -32x^{-33} = -\frac{32}{x^{33}}$$

$\frac{1}{x^{33}} = x^{-33}$

$$\frac{d}{dx} x^{-33} = -33x^{-34} = -\frac{33}{x^{34}}$$

$\frac{1}{x^{34}} = x^{-34}$

$$\frac{d}{dx} x^{-34} = -34x^{-35} = -\frac{34}{x^{35}}$$

$\frac{1}{x^{35}} = x^{-35}$

$$\frac{d}{dx} x^{-35} = -35x^{-36} = -\frac{35}{x^{36}}$$

$\frac{1}{x^{36}} = x^{-36}$

$$\frac{d}{dx} x^{-36} = -36x^{-37} = -\frac{36}{x^{37}}$$

$\frac{1}{x^{37}} = x^{-37}$

$$\frac{d}{dx} x^{-37} = -37x^{-38} = -\frac{37}{x^{38}}$$

$\frac{1}{x^{38}} = x^{-38}$

$$\frac{d}{dx} x^{-38} = -38x^{-39} = -\frac{38}{x^{39}}$$

$\frac{1}{x^{39}} = x^{-39}$

$$\frac{d}{dx} x^{-39} = -39x^{-40} = -\frac{39}{x^{40}}$$

$\frac{1}{x^{40}} = x^{-40}$

$$\frac{d}{dx} x^{-40} = -40x^{-41} = -\frac{40}{x^{41}}$$

$\frac{1}{x^{41}} = x^{-41}$

$$\frac{d}{dx} x^{-41} = -41x^{-42} = -\frac{41}{x^{42}}$$

$\frac{1}{x^{42}} = x^{-42}$

$$\frac{d}{dx} x^{-42} = -42x^{-43} = -\frac{42}{x^{43}}$$

$\frac{1}{x^{43}} = x^{-43}$

$$\frac{d}{dx} x^{-43} = -43x^{-44} = -\frac{43}{x^{44}}$$

$\frac{1}{x^{44}} = x^{-44}$

$$\frac{d}{dx} x^{-44} = -44x^{-45} = -\frac{44}{x^{45}}$$

$\frac{1}{x^{45}} = x^{-45}$

$$\frac{d}{dx} x^{-45} = -45x^{-46} = -\frac{45}{x^{46}}$$

$\frac{1}{x^{46}} = x^{-46}$

$$\frac{d}{dx} x^{-46} = -46x^{-47} = -\frac{46}{x^{47}}$$

$\frac{1}{x^{47}} = x^{-47}$

$$\frac{d}{dx} x^{-47} = -47x^{-48} = -\frac{47}{x^{48}}$$

$\frac{1}{x^{48}} = x^{-48}$

$$\frac{d}{dx} x^{-48} = -48x^{-49} = -\frac{48}{x^{49}}$$

$\frac{1}{x^{49}} = x^{-49}$

$$\frac{d}{dx} x^{-49} = -49x^{-50} = -\frac{49}{x^{50}}$$

$\frac{1}{x^{50}} = x^{-50}$

$$\frac{d}{dx} x^{-50} = -50x^{-51} = -\frac{50}{x^{51}}$$

$\frac{1}{x^{51}} = x^{-51}$

$$\frac{d}{dx} x^{-51} = -51x^{-52} = -\frac{51}{x^{52}}$$

$\frac{1}{x^{52}} = x^{-52}$

$$\frac{d}{dx} x^{-52} = -52x^{-53} = -\frac{52}{x^{53}}$$

$\frac{1}{x^{53}} = x^{-53}$

$$\frac{d}{dx} x^{-53} = -53x^{-54} = -\frac{53}{x^{54}}$$

$\frac{1}{x^{54}} = x^{-54}$

$$\frac{d}{dx} x^{-54} = -54x^{-55} = -\frac{54}{x^{55}}$$

$\frac{1}{x^{55}} = x^{-55}$

$$\frac{d}{dx} x^{-55} = -55x^{-56} = -\frac{55}{x^{56}}$$

$\frac{1}{x^{56}} = x^{-56}$

$$\frac{d}{dx} x^{-56} = -56x^{-57} = -\frac{56}{x^{57}}$$

$\frac{1}{x^{57}} = x^{-57}$

$$\frac{d}{dx} x^{-57} = -57x^{-58} = -\frac{57}{x^{58}}$$

$\frac{1}{x^{58}} = x^{-58}$

$$\frac{d}{dx} x^{-58} = -58x^{-59} = -\frac{58}{x^{59}}$$

$\frac{1}{x^{59}} = x^{-59}$

$$\frac{d}{dx} x^{-59} = -59x^{-60} = -\frac{59}{x^{60}}$$

$\frac{1}{x^{60}} = x^{-60}$

$$\frac{d}{dx} x^{-60} = -60x^{-61} = -\frac{60}{x^{61}}$$

$\frac{1}{x^{61}} = x^{-61}$

$$\frac{d}{dx} x^{-61} = -61x^{-62} = -\frac{61}{x^{62}}$$

$\frac{1}{x^{62}} = x^{-62}$

$$\frac{d}{dx} x^{-62} = -62x^{-63} = -\frac{62}{x^{63}}$$

$\frac{1}{x^{63}} = x^{-63}$

$$\frac{d}{dx} x^{-63} = -63x^{-64} = -\frac{63}{x^{64}}$$

$\frac{1}{x^{64}} = x^{-64}$

$$\frac{d}{dx} x^{-64} = -64x^{-65} = -\frac{64}{x^{65}}$$

$\frac{1}{x^{65}} = x^{-65}$

$$\frac{d}{dx} x^{-65} = -65x^{-66} = -\frac{65}{x^{66}}$$

$\frac{1}{x^{66}} = x^{-66}$

$$\frac{d}{dx} x^{-66} = -66x^{-67} = -\frac{66}{x^{67}}$$

$\frac{1}{x^{67}} = x^{-67}$

$$\frac{d}{dx} x^{-67} = -67x^{-68} = -\frac{67$$

Call 1-800-537-0806  
Fax 404-525-2267  
www.fishbase.org

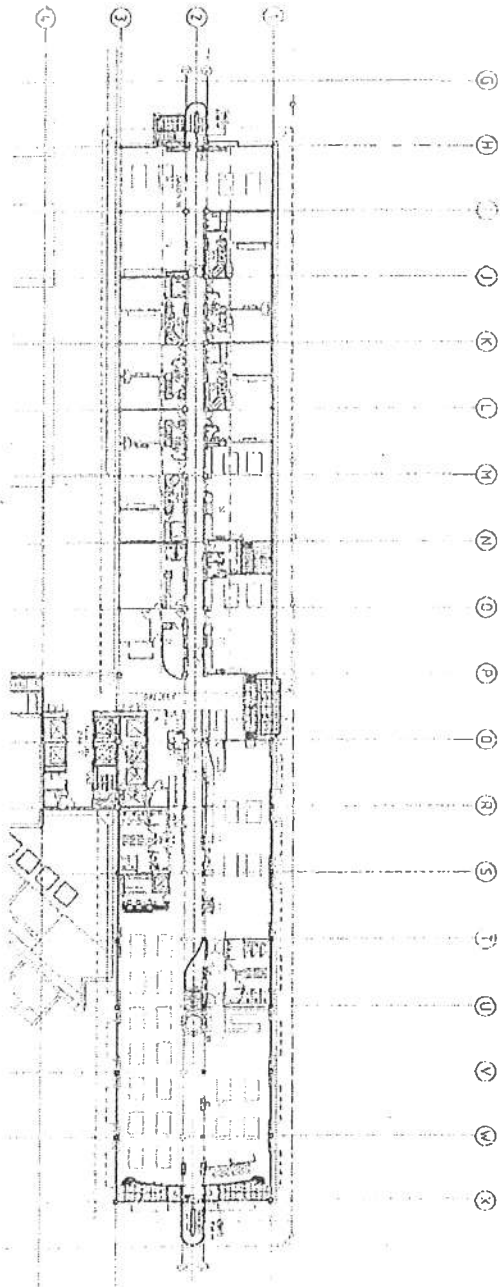
Sky City Entertainment Group  
G Layouts

Case No.	Plaintiff	Defendant	Amount	Verdict	Settlement	Remarks
1	John Doe	Jane Smith	\$100.00	\$100.00		Settled out of court.
2	John Doe	Jane Smith	\$100.00	\$100.00		Settled out of court.
3	John Doe	Jane Smith	\$100.00	\$100.00		Settled out of court.
4	John Doe	Jane Smith	\$100.00	\$100.00		Settled out of court.
5	John Doe	Jane Smith	\$100.00	\$100.00		Settled out of court.
6	John Doe	Jane Smith	\$100.00	\$100.00		Settled out of court.
7	John Doe	Jane Smith	\$100.00	\$100.00		Settled out of court.
8	John Doe	Jane Smith	\$100.00	\$100.00		Settled out of court.
9	John Doe	Jane Smith	\$100.00	\$100.00		Settled out of court.
10	John Doe	Jane Smith	\$100.00	\$100.00		Settled out of court.

Level 2 Gaming Layout  
SKYCITY  
Mojo Relocation  
19/09/2012

5132C A1202

2012 L5 003



The four substitute tables denoted on the MGF plan may be paired with any four tables from salons 82, 86 and 88 as shown on this plan. The casino games that may be deployed on the substitute tables shall be consistent with an approved game mix for the paired tables that are not in use.



**moller**  
Moller  
Architects

For 43 312000  
Architectural  
Services  
Project: 04-10-2012



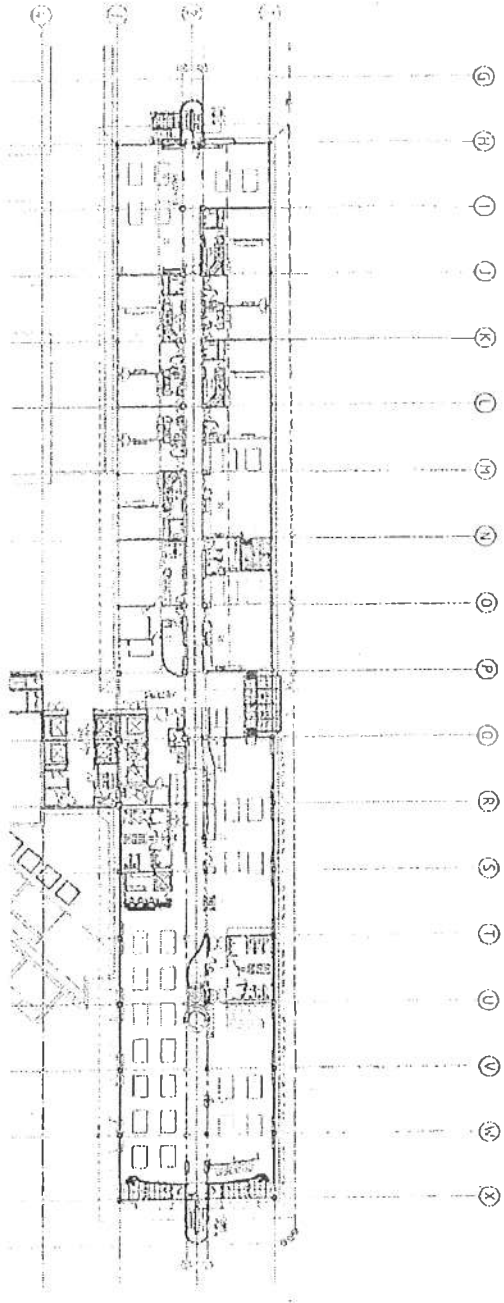
Sky City Entertainment Group  
Gaming Layouts

Item	Description	Quantity	Unit	Price	Total
1	Architectural Services	1	Hour	100.00	100.00
2	Site Visit	1	Hour	100.00	100.00
3	Design Development	1	Hour	100.00	100.00
4	Construction Documents	1	Hour	100.00	100.00
5	Construction Administration	1	Hour	100.00	100.00
6	Post-Construction Services	1	Hour	100.00	100.00
7	Travel	1	Hour	100.00	100.00
8	Meals	1	Hour	100.00	100.00
9	Printing	1	Hour	100.00	100.00
10	Photocopying	1	Hour	100.00	100.00
11	Postage	1	Hour	100.00	100.00
12	Telephone	1	Hour	100.00	100.00
13	Internet	1	Hour	100.00	100.00
14	Software	1	Hour	100.00	100.00
15	Hardware	1	Hour	100.00	100.00
16	Other	1	Hour	100.00	100.00
17	Subtotal				1000.00
18	Tax				100.00
19	Total				1100.00

HS Gaming Layout  
04/10/2012

5132C 4/12/15

2012 L5 004



The four substitute tables denoted on the MGf plan may be paired with any four tables from salons 82, 86 and 88 as shown on this plan. The casino games that may be deployed on the substitute tables shall be consistent with an approved game mix for the paired tables that are not in use.



**moller**  
Moller  
Architects

CE-543 20028  
PA-543 20028  
Architect  
1000 West 10th Street  
Suite 100  
Anchorage, Alaska 99501  
Tel: 907.561.1234  
Fax: 907.561.1235



Sky City Entertainment Group  
Gaming Layouts

Item	Description	Quantity	Unit Price	Total Price
1	Architectural Services	1	\$10,000.00	\$10,000.00
2	Site Plan	1	\$5,000.00	\$5,000.00
3	Sectional Drawings	1	\$5,000.00	\$5,000.00
4	Final Construction Documents	1	\$10,000.00	\$10,000.00
5	Construction Administration	1	\$10,000.00	\$10,000.00
6	Post-Construction Services	1	\$5,000.00	\$5,000.00
7	Travel Expenses	1	\$1,000.00	\$1,000.00
8	Other Expenses	1	\$1,000.00	\$1,000.00
9	Subtotal			\$47,000.00
10	Grand Total			\$47,000.00

H5 Gaming Layout  
04/10/2012

5122C A136